

City of New York,  
 Board of Estimate and Apportionment,  
 Chief Engineer's Office. Division of Public Improvements.

I, Joseph Haug, Secretary of The Board of Estimate and Apportionment of The City of New York, Do Hereby Certify That This Map is One of Three Similar Maps Made at The Direction of The Said Board of Estimate and Apportionment, Entitled:

Plan and Profile  
 of  
**A NEW STREET**  
 Adjacent To & Parallel With East Side of  
 RIVERSIDE DRIVE from 177<sup>th</sup> ST. to 181<sup>st</sup> ST.  
 and South Side of  
 W. 181<sup>st</sup> ST. from RIVERSIDE DRIVE to BUENA VISTA AVE.,  
 BOROUGH OF MANHATTAN.

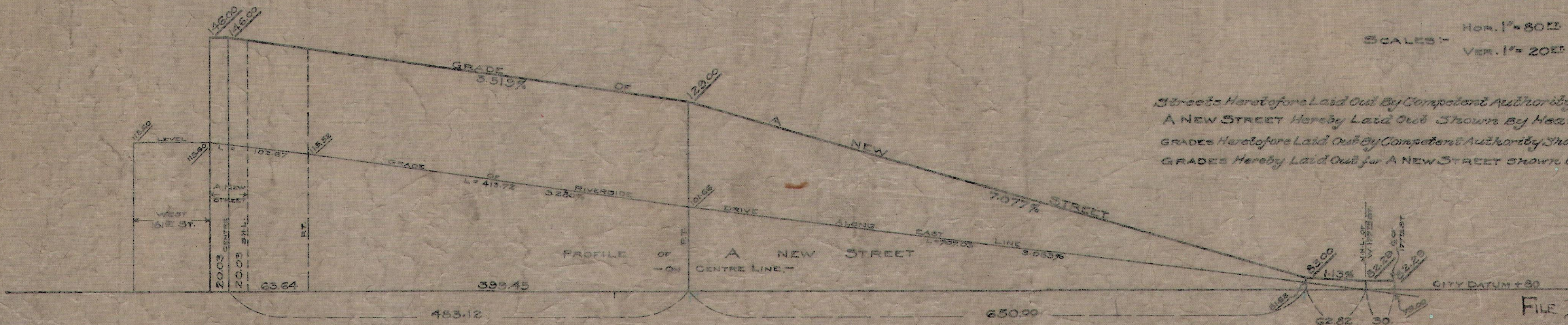
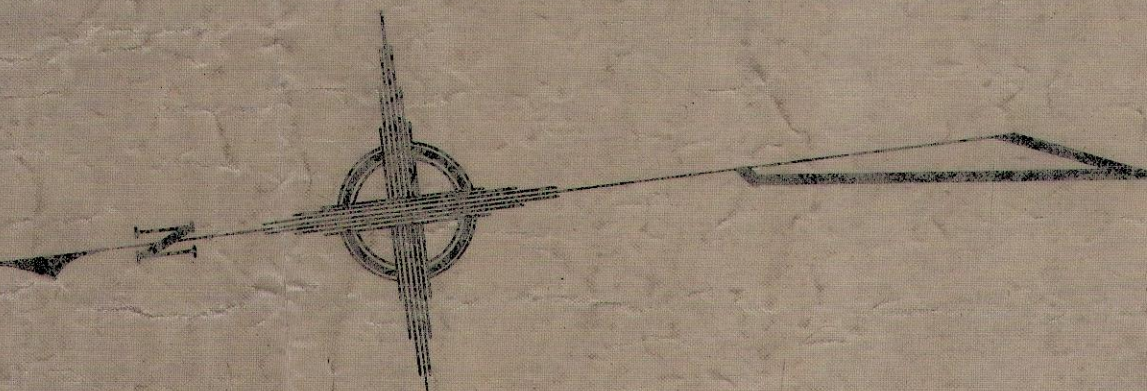
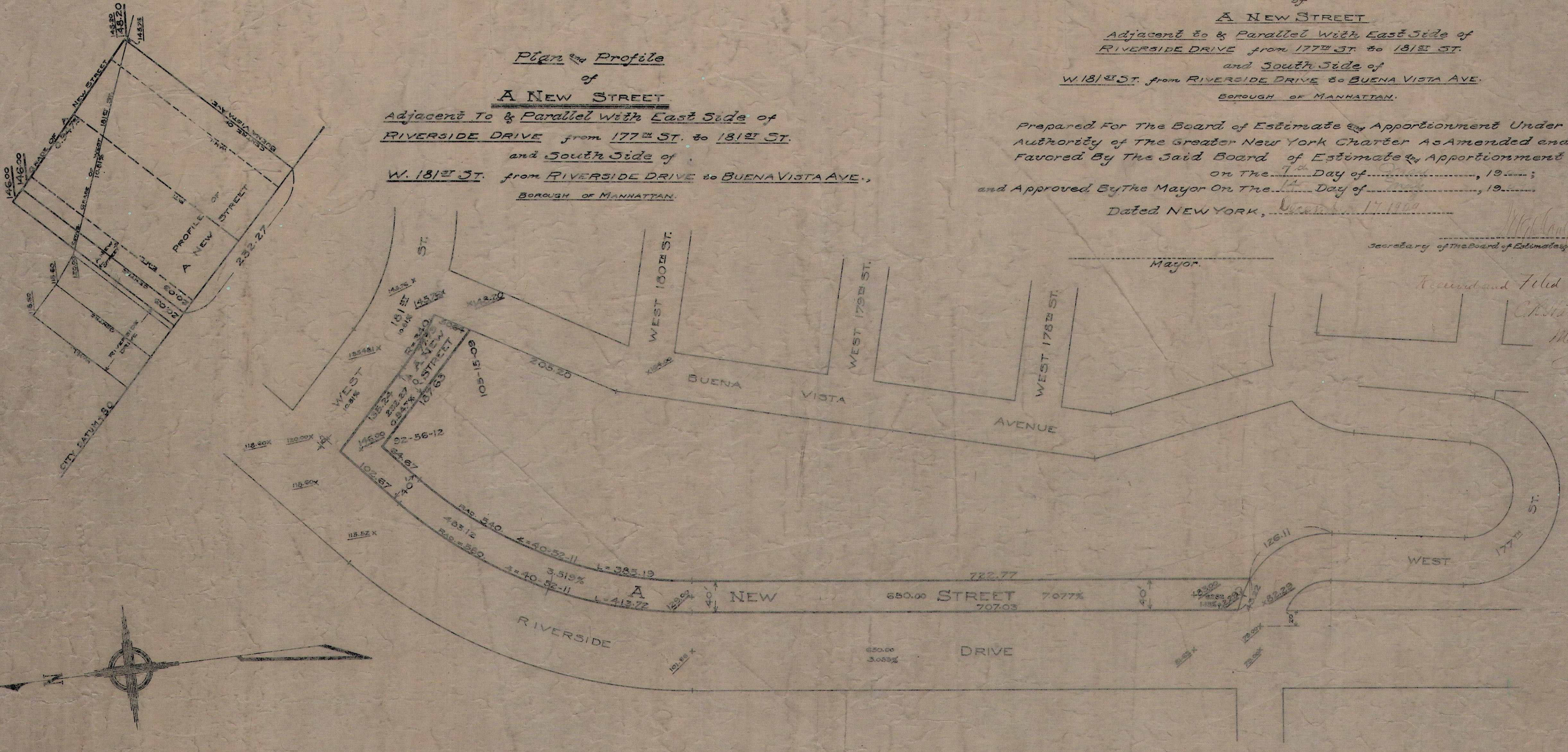
Plan and Profile  
 of  
**A NEW STREET**  
 Adjacent to & Parallel With East Side of  
 RIVERSIDE DRIVE from 177<sup>th</sup> ST. to 181<sup>st</sup> ST.  
 and South Side of  
 W. 181<sup>st</sup> ST. from RIVERSIDE DRIVE to BUENA VISTA AVE.  
 BOROUGH OF MANHATTAN.

Prepared For The Board of Estimate and Apportionment Under  
 Authority of The Greater New York Charter As Amended and  
 Favored By The Said Board of Estimate and Apportionment  
 on the 7<sup>th</sup> Day of \_\_\_\_\_, 19\_\_\_\_;  
 and Approved By The Mayor On The \_\_\_\_\_ Day of \_\_\_\_\_, 19\_\_\_\_.  
 Dated NEW YORK, \_\_\_\_\_ 14 1909

Secretary of The Board of Estimate and Apportionment.

Mayor.

Record and Filed Dec 23 1909  
 Map Clerk N.Y.C.



SCALES: Hor. 1" = 80'  
 Ver. 1" = 20'

Streets Herebefore Laid Out By Competent Authority Shown By Light Lines.  
 A NEW STREET Hereby Laid Out Shown By Heavy Lines.  
 GRADES Herebefore Laid Out By Competent Authority Shown By Small Underlined Figures, plus 79.00.  
 GRADES Hereby Laid Out for A NEW STREET Shown By Large Underlined Figures, plus 83.00.

FILE D 69.21  
 D 69.27 (C) 8519 (C)