

Ave.

138th

137th

136th

135th

134th

133rd

132nd

10th

Convent

Cliff

Ave.

New Road

St. Nicho

Ave.

8th

Ave.

MANHATTAN ST.

LAWRENCE

124th

Ave.

126th

128th

129th

130th

131st

800'

116' 10"

199' 10"

383' 11 1/4"

202' 0 1/2"

585' 7 1/4"

116' 10"

199' 10"

413' 8 1/4"

202' 0 1/2"

665' 6 1/4"

1074' 1 3/4"

199' 10"

444' 2 3/4"

202' 0 1/2"

634' 5 1/2"

1074' 1 3/4"

199' 10"

413' 8 1/4"

202' 0 1/2"

505' 0 1/8"

977' 4 3/4"

305' 2 1/8"

512' 4 3/4"

302' 0 1/2"

531' 0 1/2"

977' 4 3/4"

381' 10 5/8"

377' 4 3/4"

302' 0 1/2"

416' 8"

888' 7 3/4"

624' 11 7/8"

205' 7/16"

168' 8"

393' 7 1/2"

888' 7 3/4"

624' 11 7/8"

205' 7/16"

168' 8"

416' 8"

888' 7 3/4"

624' 11 7/8"

205' 7/16"

168' 8"

284' 2 1/8"

888' 7 3/4"

624' 11 7/8"

205' 7/16"

168' 8"

309' 5 1/8"

888' 7 3/4"

624' 11 7/8"

205' 7/16"

168' 8"

222' 5 1/4"

888' 7 3/4"

624' 11 7/8"

205' 7/16"

168' 8"

200'

888' 7 3/4"

624' 11 7/8"

205' 7/16"

168' 8"

200'

888' 7 3/4"

624' 11 7/8"

205' 7/16"

168' 8"

244' 1 1/4"

888' 7 3/4"

624' 11 7/8"

205' 7/16"

168' 8"

314' 8 3/4"

888' 7 3/4"

624' 11 7/8"

205' 7/16"

168' 8"

338' 9 3/4"

888' 7 3/4"

624' 11 7/8"

205' 7/16"

168' 8"

350'

888' 7 3/4"

624' 11 7/8"

205' 7/16"

168' 8"

350'

888' 7 3/4"

624' 11 7/8"

205' 7/16"

168' 8"

199' 10"

888' 7 3/4"

624' 11 7/8"

205' 7/16"

168' 8"

378' 6 1/2"

888' 7 3/4"

624' 11 7/8"

205' 7/16"

168' 8"

378' 6 1/2"

888' 7 3/4"

624' 11 7/8"

205' 7/16"

168' 8"

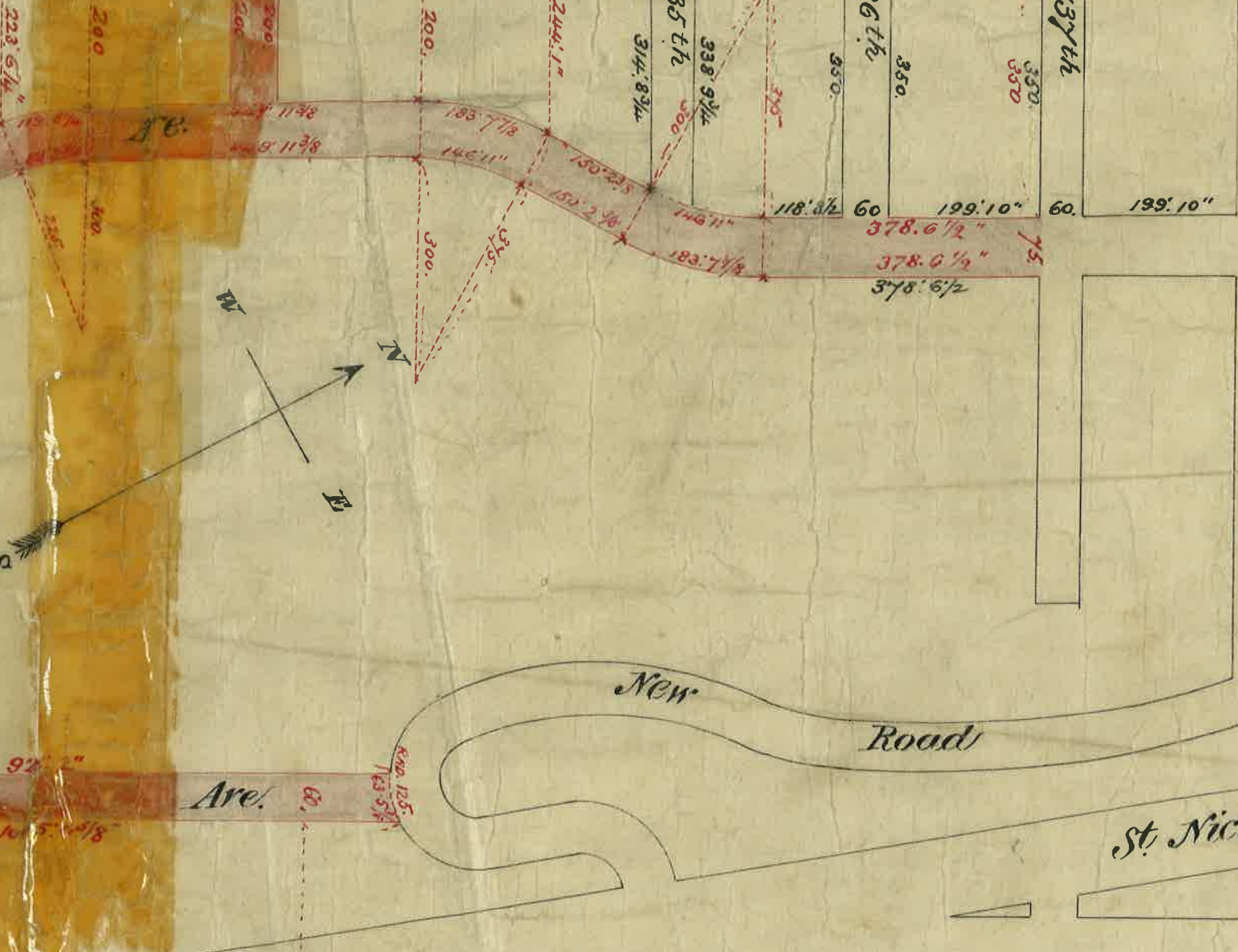
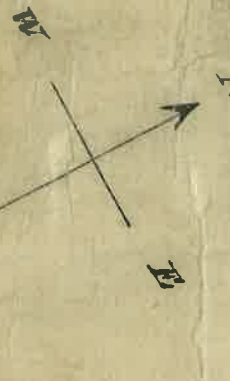
199' 10"

888' 7 3/4"

624' 11 7/8"

205' 7/16"

168' 8"



opened and extended
MAP showing the Streets and Avenues laid out by the Board
of Street Opening and Improvement by and under authority granted
by Chapter 360, Laws of the State of New York, Passed May 10th 1883.

We, the Board of Street Opening and Improvement of the
City of New York, by and under Authority of Chapter 360, Laws of
the State of New York, Passed May 10th 1883, do hereby certify that
this Map, Plan or Survey is one of two similar Maps, Plans or
Surveys caused to be made by us and directed by us to be filed in
the manner provided by said Act showing the streets and
avenues laid out opened and extended by us on the 19th day
of March 1884.

Note. Parts of Streets and Avenues opened under this
Act colored Red.

Dated in the City of New York this 19th day of March 1884

Arthur Berry
Secretary

Franklin Edson Mayor

Wm Hartung Grant Comptroller

John A. Thompson Com^r of Public Works

Edw. C. Hale Pres^{nt} of Public Parks

Wm P. Kirk Pres^{nt} of Board of Aldermen

Board of Street
Opening and
Improvement