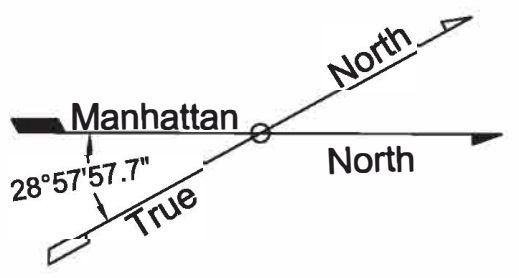
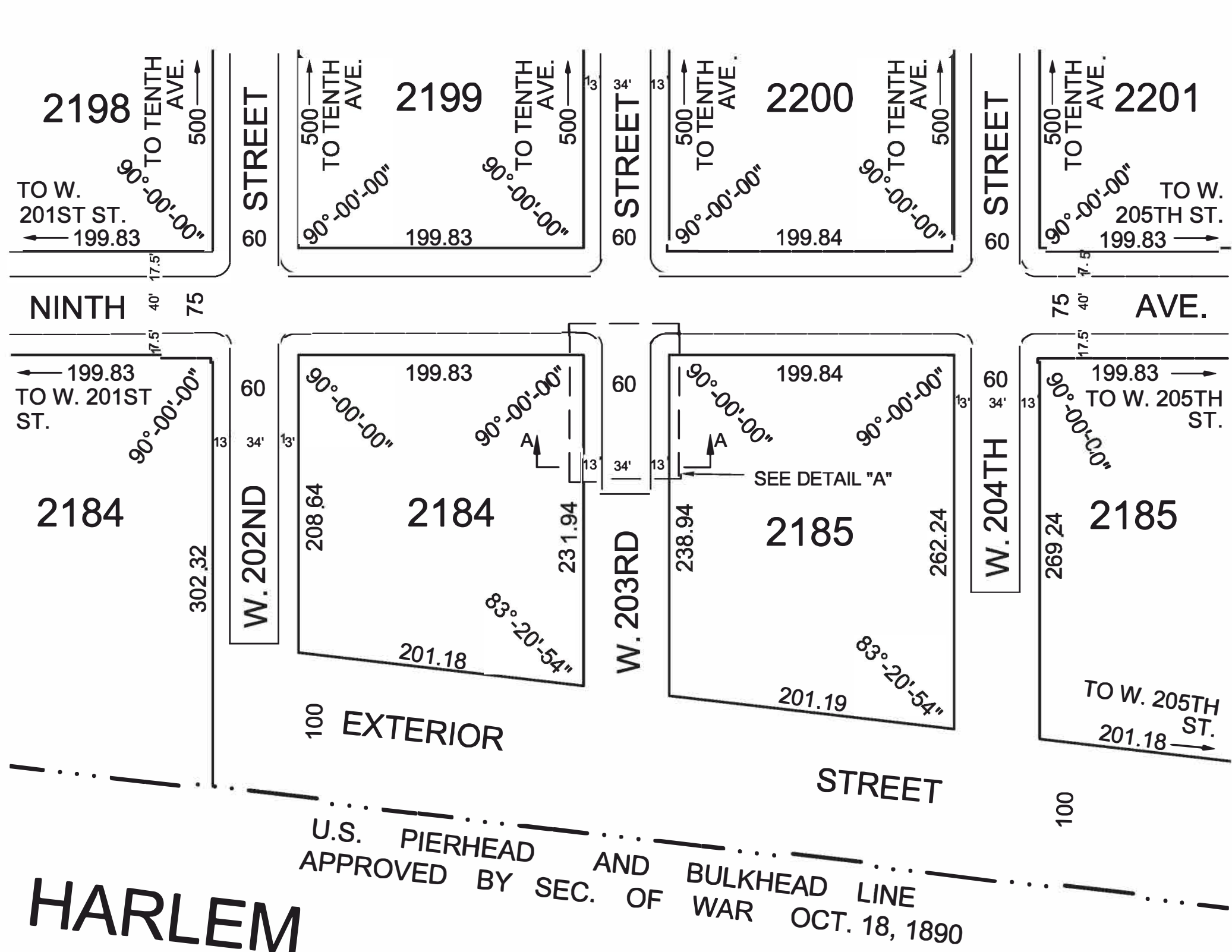


LEGEND

- Indicates street line heretofore established and hereby retained.
- Indicates street line heretofore established and hereby eliminated.
- Indicates street line hereby established.
- Indicates U.S. Pierhead and Bulkhead line.
- 500 Indicates dimension heretofore established and hereby retained.
- 60.00 Indicates dimension heretofore established and hereby eliminated.
- 60.00 Indicates dimension hereby established.
- 13.43 Indicates elevation heretofore established and hereby retained.
- 2185 Indicates tax block number.
- 13 Indicates roadway and sidewalk treatment dimension heretofore established and hereby retained.

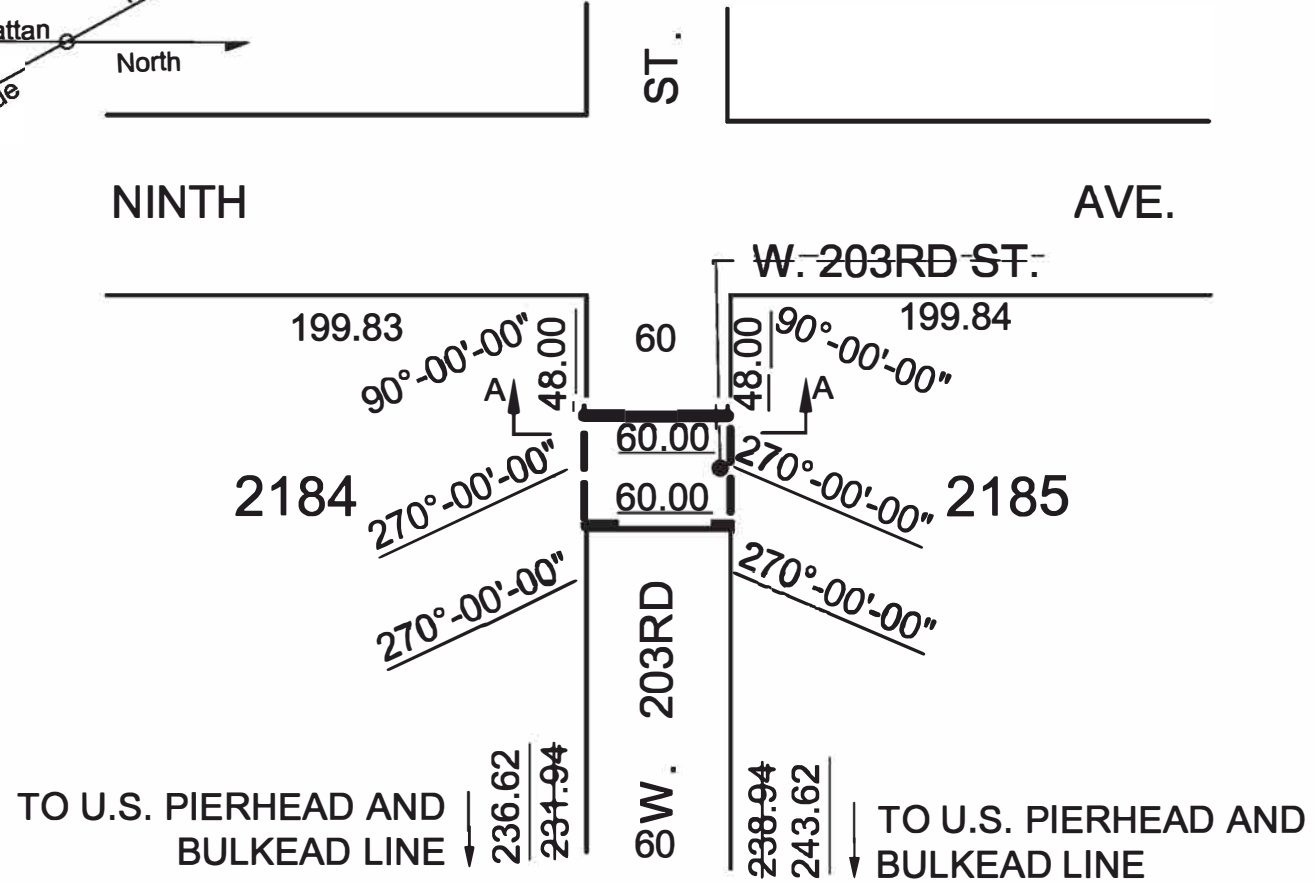
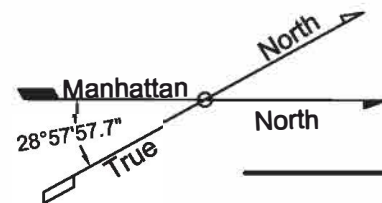
REFERENCE MAPS

B.P. ACC. MAP NO.	(D.C.P. NO.)	DATED
03086		AUGUST 11, 1874
04555		APRIL 17, 1884
07388		MAY 3, 1904
08708		MAY 13, 1910
25691		FEBRUARY 11, 1927
27714	CP128	MARCH 24, 1938
28082	CP1292	FEBRUARY 06, 1941
28137		
28601		JULY 07, 1936
28602	CP3936	MARCH 31, 1948
28869	CP3918	DECEMBER 29, 1947
28947	CP5970	JANUARY 18, 1949
28998		JULY 26, 1949
29111	CP7584	JUNE 8, 1950
30017		OCTOBER 14, 1948
30121	860114MMY	OCTOBER 6, 1999



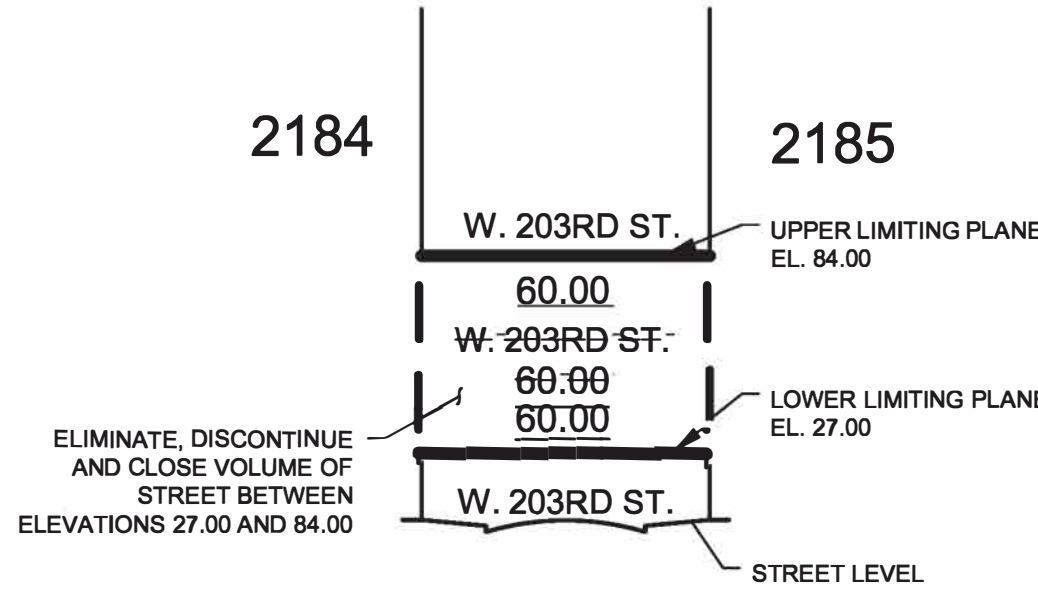
NOTES

- All dimensions and elevations are in feet.
- Elevations are for top of curb and are referred to the datum of the Topographical Bureau, Borough of Manhattan which is 2.750 feet (0.838 meters) above the U.S.C. & G.S. datum at Sandy Hook, New Jersey.
- Elevations are taken at top of curb unless otherwise noted. Sidewalk dimensions shown are theoretically established for grade determination purposes only.
- Easements are shown for informational purposes only and are not part of the City Map.
- An area of any street hereby eliminated or previously eliminated from the City Map may be reserved for Department of Environmental Protection (DEP) utility infrastructure purposes, pursuant to an easement reserved for the City's benefit or, in the case of property to be retained in City ownership, pursuant to a memorandum of understanding between DEP and the City agency with jurisdiction or management responsibility over the eliminated street area. For verification as to the existence of an easement refer to the official property records in the offices in which instruments affecting real property are required to be recorded.

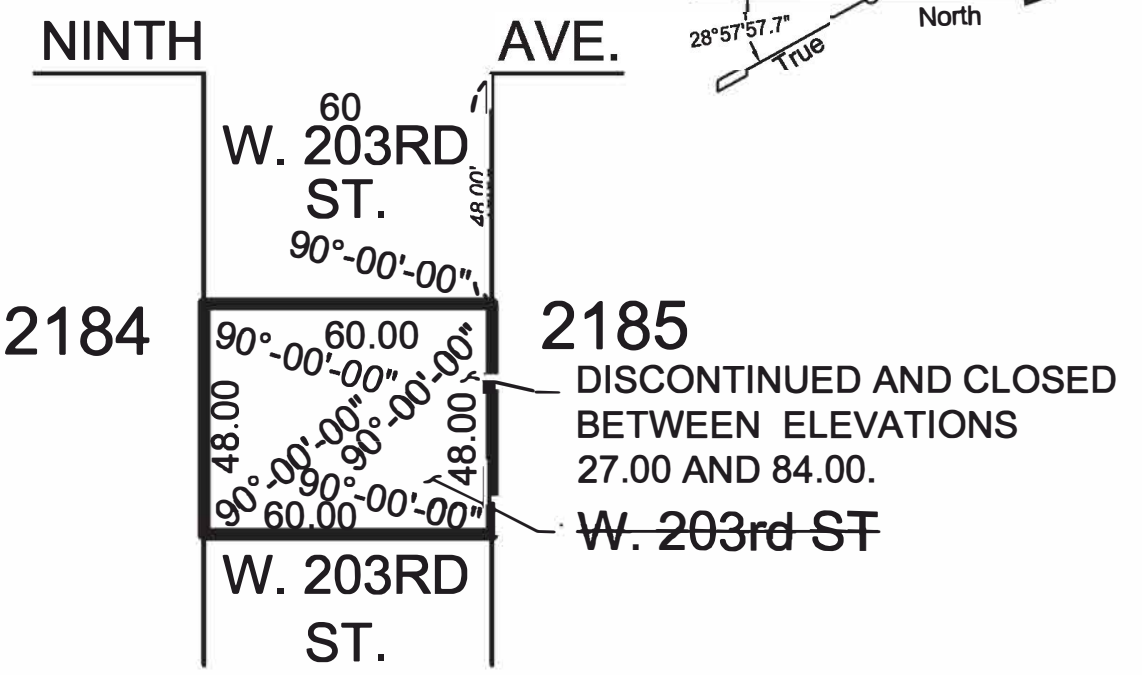
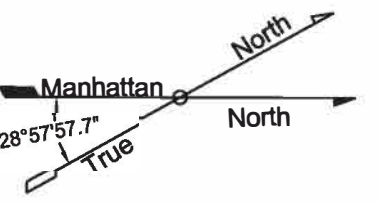


DETAIL "A"
W. 203RD STREET PLAN EAST OF 9TH AVE.
BETWEEN ELEVATIONS 27.00 AND 84.00
Scale: 1"=80'

PLAN AT GRADE
Scale: 1"=80'



SECTION A-A
W. 203RD STREET EAST OF 9TH AVE.
BETWEEN ELEVATIONS 27.00 AND 84.00
Scale: 1"=40'



DISCONTINUANCE AND CLOSING MAP
Scale: 1"=40'

CITY OF NEW YORK
DEPARTMENT OF CITY PLANNING
BOROUGH OF MANHATTAN

MAP C.P.C. NO. N-210466 (A) CSM

SHOWING

THE ELIMINATION,
DISCONTINUANCE AND CLOSING

OF

A VOLUME OF A PORTION OF WEST 203RD STREET
BETWEEN NINTH AVENUE AND THE U.S. PIERHEAD AND BULKHEAD LINE
BETWEEN ELEVATIONS 27.00 AND 84.00

DATE: July 27, 2021

Chief Engineer,
DEPARTMENT OF CITY PLANNING

Director,
DEPARTMENT OF CITY PLANNING

DATE: NEW YORK December 15, 2023

Secretary, CITY PLANNING COMMISSION



GEOMETRY SHOWN ON THIS
DRAWING HAS BEEN CERTIFIED BY:

PHILIP HABIB & ASSOCIATES
102 MADISON AVENUE, 11TH FL
NEW YORK, NY 10016

