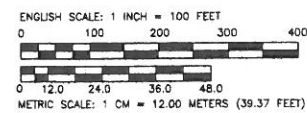


LOCATION MAP (N.T.S.)

KEY PLAN



NOTE:

THE COORDINATES SHOWN ARE BASED ON A LOCAL COORDINATE SYSTEM, WHICH REFERENCES TRUE NORTH, AS ESTABLISHED BY KING & GAVARIS, AS SHOWN ON 1971 GIBBS & HILL PLANS FOR NYSUDC WELFARE ISLAND DEVELOPMENT CORP., RELATING TO THE U.S. ARMY ENGINEERS (DRAWING NO. S.D. 276) WITH THE FOLLOWING TRANSLATION:

	U.S. COORDINATES		K&G COORDINATES
U.S. MON 1W	S 11,393.254	=	N 10,000.000
	W 842.168	=	E 15,000.000
U.S. MON. X	S 10,676.320	=	N 10,719.934
	W 637.710	=	E 15,204.458

REFERENCE MAPS:
 1. ACC No. 30212 (CPC No. 030284 MMM) - DATED: 11/23/04
 2. ACC No. 30015 - DATED: 08/17/72

LEGEND

- Indicates street line heretofore established and hereby retained.
- - - - - Indicates street line heretofore established and hereby eliminated.
- Indicates street line hereby established.
- Indicates sidewalk and roadway treatment line hereby established or heretofore established and hereby retained.
- 284.15 Indicates dimension heretofore established and hereby retained.
- 448.72 Indicates dimension hereby established.
- 106.04 Indicates dimension heretofore established and hereby eliminated.
- 13.52 Indicates elevation hereby established.
- 28.12 Indicates elevation heretofore established and hereby retained.
- 21.27 Indicates elevation heretofore established and hereby eliminated.
- 22.10 P Indicates pavement elevation hereby established.
- 32' Indicates sidewalk and roadway treatment dimension hereby established.
- 38' Indicates sidewalk and roadway treatment dimension heretofore established and hereby retained.
- 186.52' Indicates tie-in distance hereby established.
- 115.14' Indicates tie-in distance heretofore established and hereby retained.
- 46.20' Indicates tie-in distance heretofore established and hereby eliminated.
- U.S. Pierhead and Bulkhead Line
- Indicates Ed Koch Bridge (Above) (Queensboro Bridge)
- P.C. Indicates Point of Curvature
- P.T. Indicates Point of Tangency
- P.C.C. Indicates Point of Complex Curvature
- P.R.C. Indicates Point of Reverse Curvature
- P.V.C. Indicates Point of Vertical Curvature
- P.V.I. Indicates Point of Vertical Intersection
- P.V.T. Indicates Point of Vertical Tangency

ELEVATIONS REFER TO THE BELMONT ISLAND DATUM WHICH IS 2.265 FEET BELOW THE U.S.C.&G DATUM AT SANDY HOOK, N.J.
 ELEVATIONS ARE TAKEN AT TOP OF CURB UNLESS OTHERWISE NOTED.
 SIDEWALK DIMENSIONS SHOWN ARE THEORETICALLY ESTABLISHED FOR GRADE DETERMINATION PURPOSES ONLY.

ALL DIMENSIONS AND ELEVATIONS ARE IN FEET.

I, Yvette V. Gruel, Secretary of the City Planning Commission, do hereby certify that this map is one of similar maps approved by the City Planning Commission on the 30 day of March, 2012 (Cal. No. 8) and subsequently approved by the City Council on May 8 (Res. 1762), and that these maps were filed on the date of this certification and will take effect on the following day.

Dated: New York _____

Secretary, City Planning Commission

CITY OF NEW YORK
 BOROUGH OF MANHATTAN
 OFFICE OF THE PRESIDENT
 TOPOGRAPHICAL BUREAU

MAP ACC NO. 30241
 SHOWING

THE ESTABLISHMENT OF
 EAST MAIN STREET
 WEST MAIN STREET
 NORTH LOOP ROAD
 SOUTH LOOP ROAD
 EAST LOOP ROAD
 AND WEST LOOP ROAD

AND
 THE ESTABLISHMENT OF
 LEGAL GRADES

BETWEEN THE EASTERLY PROJECTIONS OF
 EAST 60TH AND EAST 53RD STREETS
 BOROUGH OF MANHATTAN

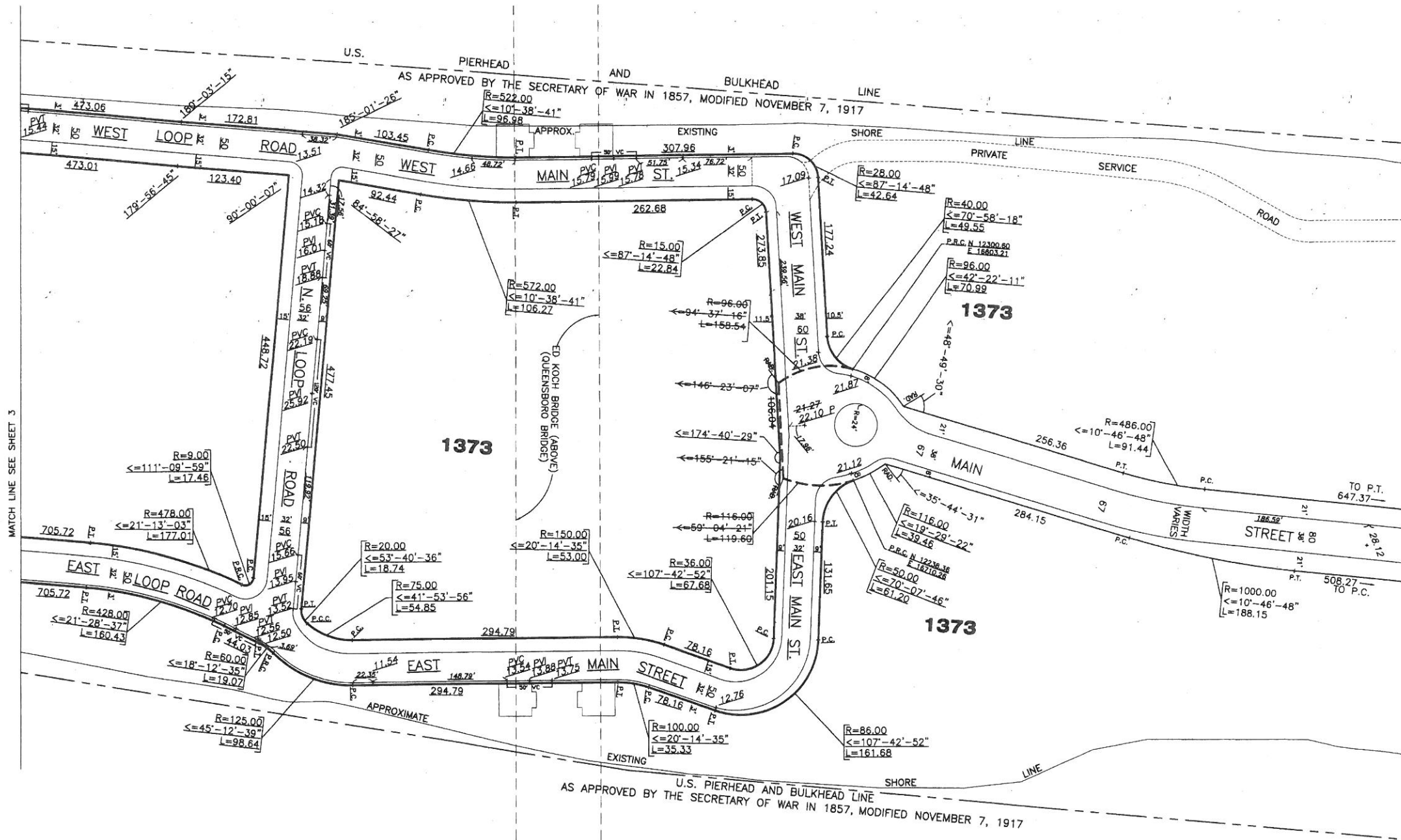
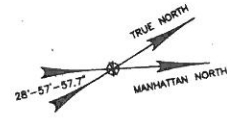
DATED NEW YORK OCTOBER 11, 2012

SCOTT M. STRINGER
 PRESIDENT OF THE BOROUGH OF MANHATTAN

MARIA MIKOLAJCZYK, P.E.
 CONSULTING ENGINEER OF THE BOROUGH OF MANHATTAN

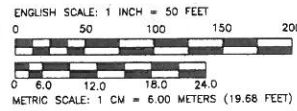


GEOMETRY SHOWN ON THIS DRAWING HAS BEEN CERTIFIED BY PHILIP HABIB & ASSOCIATES, 102 MADISON AVENUE, NEW YORK, NEW YORK 10016, AND IS BASED ON A SURVEY PREPARED BY THE GALLAS SURVEYING GROUP, DAVID A. HANSON, NYS LAND SURVEYOR NO. 50807, DATED JULY 13, 2011.

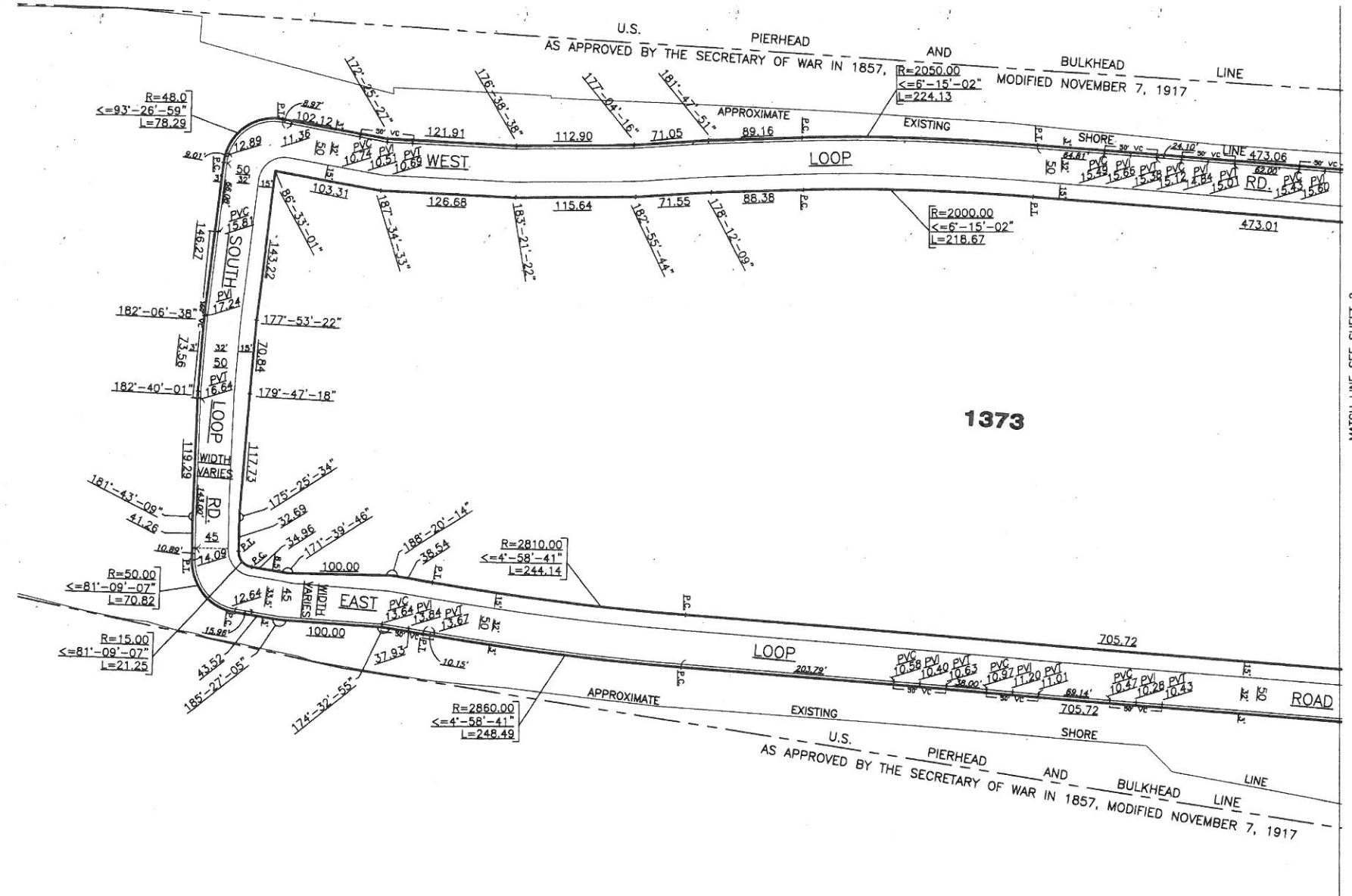
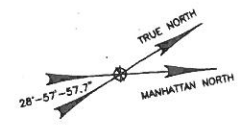


MATCH LINE SEE SHEET 3

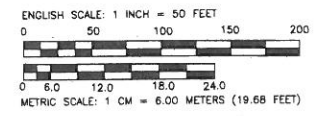
U.S. PIERHEAD AND BULKHEAD LINE AS APPROVED BY THE SECRETARY OF WAR IN 1857, MODIFIED NOVEMBER 7, 1917



GEOMETRY SHOWN ON THIS DRAWING HAS BEEN CERTIFIED BY PHILIP HABIB & ASSOCIATES, 102 MADISON AVENUE, NEW YORK, NEW YORK 10016, AND IS BASED ON A SURVEY PREPARED BY THE GALLAS SURVEYING GROUP, DAVID A. HINSON, NYS LAND SURVEYOR NO. 50607, DATED JULY 13, 2011.



MATCH LINE SEE SHEET 2



GEOMETRY SHOWN ON THIS DRAWING HAS BEEN CERTIFIED BY PHILIP HABIB & ASSOCIATES, 102 MADISON AVENUE, NEW YORK, NEW YORK 10016, AND IS BASED ON A SURVEY PREPARED BY THE GALLAS SURVEYING GROUP, DAVID A. HINSON, NYS LAND SURVEYOR NO. 50807, DATED JULY 13, 2011.