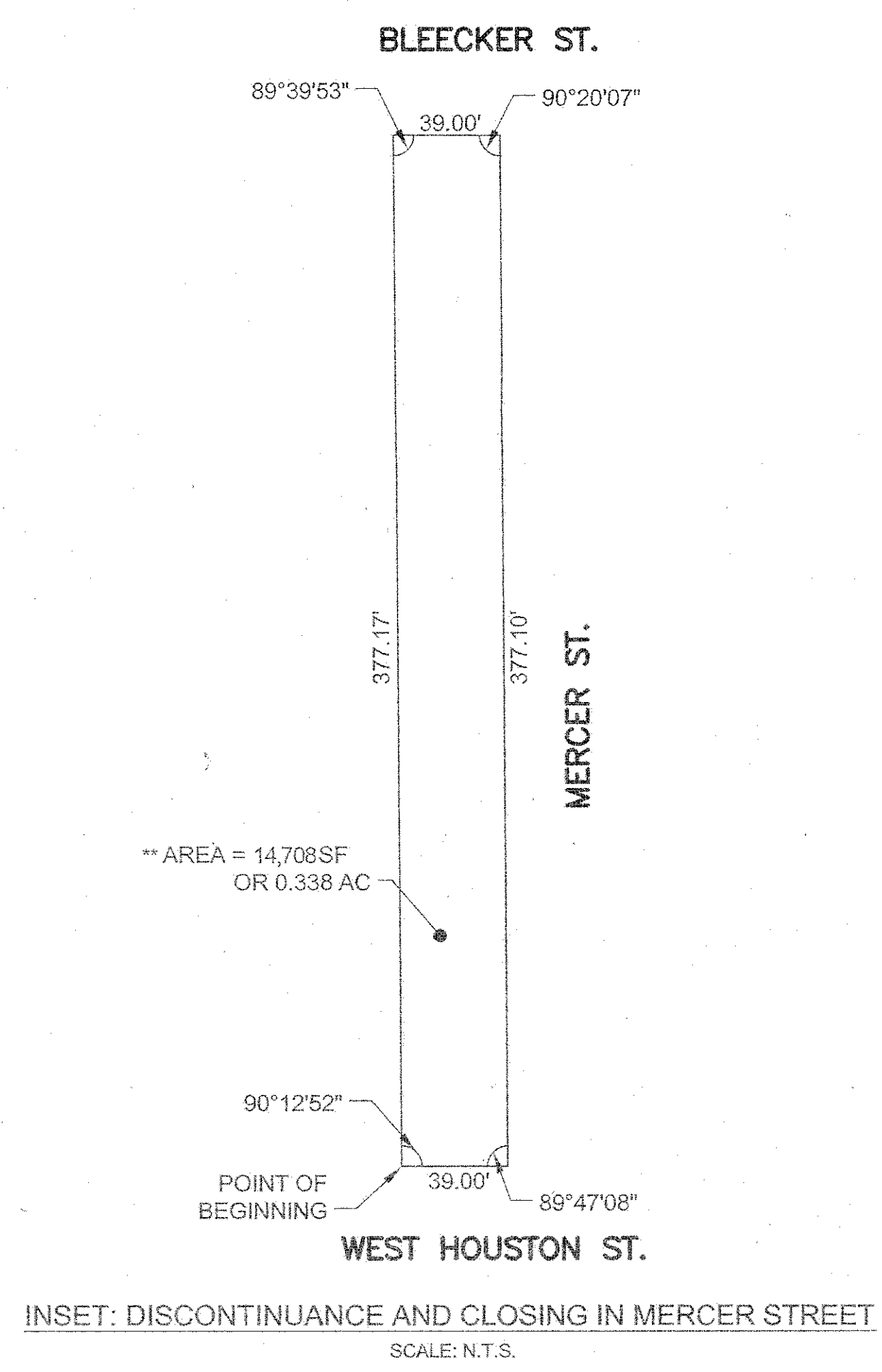


**LEGEND**

	Indicates street line heretofore established and hereby retained.
	Indicates street line hereby established.
	Indicates street line heretofore established and hereby eliminated.
	Indicates roadway and sidewalk treatment heretofore established and hereby retained.
	Indicates dimension heretofore established and hereby retained.
	Indicates dimension hereby established.
	Indicates dimension heretofore established and hereby eliminated.
	Indicates Manhattan tax block number.
	Indicates existing grade.
	Indicates elevation heretofore established and hereby retained.
	Indicates tie-in distance to an elevation heretofore established and hereby retained.
	Indicates roadway and sidewalk treatment dimension hereby established.
	Indicates roadway and sidewalk treatment dimension heretofore established and hereby retained.
	Indicates roadway and sidewalk treatment dimension heretofore established and hereby eliminated.

**NOTE**

- All dimensions are in feet.
- Elevations apply to top of curb unless otherwise indicated.
- Elevations refer to the datum of the Borough of Manhattan, which is 2.750 feet (0.838 meters) above mean sea level at the U.S.C & G. Survey Datum at Sandy Hook, New Jersey.



I, YVETTE V. CREVEL, Secretary of the City Planning Commission, do hereby certify that this map is one of 7 similar maps approved by the City Planning Commission on the 6<sup>th</sup> day of June, 2012 (Calendar No. B) and subsequently approved by the City Council on July 25, 2012 (Res. No. 1466), which action comprised final approval and that this map was filed on the date of this certification and will take effect on the following day.  
 Dated, New York July 24, 2015

*Yvette V. Crevel*  
 Secretary, City Planning Commission

CITY OF NEW YORK  
 OFFICE OF THE PRESIDENT BOROUGH OF MANHATTAN  
 TOPOGRAPHIC BUREAU  
**MAP ACC. NO. 30230 30238\***  
 SHOWING  
 THE NARROWING,  
 BY ELIMINATION, DISCONTINUANCE AND CLOSING,  
 OF  
**MERCER STREET**  
 BETWEEN  
 WEST HOUSTON STREET AND BLEECKER STREET

DATED: **DECEMBER 22, 2011**  
 \*CORRECTED: JUNE 6, 2012  
 \*\*TECHNICAL CORRECTIONS: FEBRUARY 4, 2015

*Scott M. Stringer*  
 SCOTT M. STRINGER  
 PRESIDENT  
 BOROUGH OF MANHATTAN

*Maria Mikolajczyk, P.E.*  
 MARIA MIKOLAJCZYK, P.E.  
 CONSULTING ENGINEER  
 BOROUGH OF MANHATTAN

PREPARED BY:  
 SITE/CIVIL ENGINEER  
**AKRF**  
 AKRF ENGINEERING, P.C.  
 440 PARK AVENUE SOUTH  
 NEW YORK, NY 10016  
 (212) 696-6670 (PHONE)  
 (212) 726-0942 (FAX)

Geometry shown on this drawing has been certified by AKRF Engineering P.C., 440 Park Avenue South, New York, NY 10016 and is based on a survey prepared by Langan Engineering & Environmental Services on March 24, 2009.

References Maps:

Alteration Map No.	**C.P. No.	**Date Filed
29453	12574	12/06/1956
29835	17930	11/26/1964
29462	12819	03/13/1957