

LEGEND

- Indicates street line heretofore established and hereby retained.
- Indicates street line hereby established.
- Indicates street line heretofore established and hereby eliminated.
- Indicates roadway and sidewalk treatment heretofore established and hereby retained.
- 200.08' Indicates dimension heretofore established and hereby retained.
- 48.50'P Indicates park dimension hereby established.
- 48.50'P Indicates park dimension heretofore established and hereby retained.
- 525 (38.63) Indicates Manhattan tax block number.
- 28.10 Indicates existing grade.
- 34.40 Indicates elevation heretofore established and hereby retained.
- 131' Indicates elevation hereby established.
- 45' Indicates tie-in distance to an elevation heretofore established and hereby retained.
- 89°40'25" Indicates roadway and sidewalk treatment dimension heretofore established and hereby retained.
- 90°12'20"P Indicates interior angle of block lines heretofore established and hereby retained.
- 90°12'20"P Indicates interior angle of park lines hereby established.
- P.C. Indicates interior angle of park lines heretofore established and hereby retained.
- P.T. Indicates point of curvature heretofore established and hereby retained.
- Indicates point of tangency heretofore established and hereby retained.
- [Hatched Box] Indicates park hereby established.
- [Hatched Box] Indicates park heretofore established and hereby retained. (See Map Acc. No. 30234)

NOTE

- All dimensions are in feet.
- Elevations apply to top of curb unless otherwise indicated.
- Elevations refer to the datum of the Borough of Manhattan, which is 2.750 feet (0.838 meters) above mean sea level at the U.S.C & G. Survey Datum at Sandy Hook, New Jersey.
- \* The proposed park is subject to a recorded easement agreement with the adjacent property owner for purposes of construction, utilities and access.

APPROVED FOR NEW YORK CITY DEPARTMENT OF PARKS AND RECREATION

*Adrian Benepe* 5/30/2012  
ADRIAN BENEPE DATE  
COMMISSIONER

CITY OF NEW YORK  
OFFICE OF THE PRESIDENT BOROUGH OF MANHATTAN  
TOPOGRAPHIC BUREAU

**MAP ACC. NO. 30235**  
SHOWING  
THE ESTABLISHMENT OF A  
**PARK**  
BOUNDED BY  
**MERCER STREET,**  
**BLEECKER STREET AND WEST 3RD STREET**  
AND  
**THE ADJUSTMENT OF GRADES NECESSITATED THEREBY**

DATED: December 22, 2011

REVISED: June 6, 2012

\*TECHNICAL CORRECTIONS: FEBRUARY 4, 2015

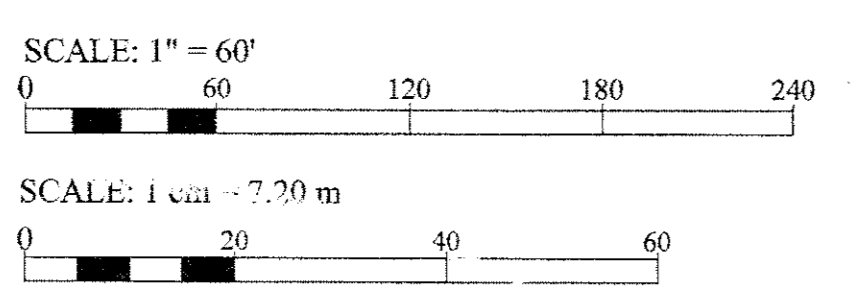
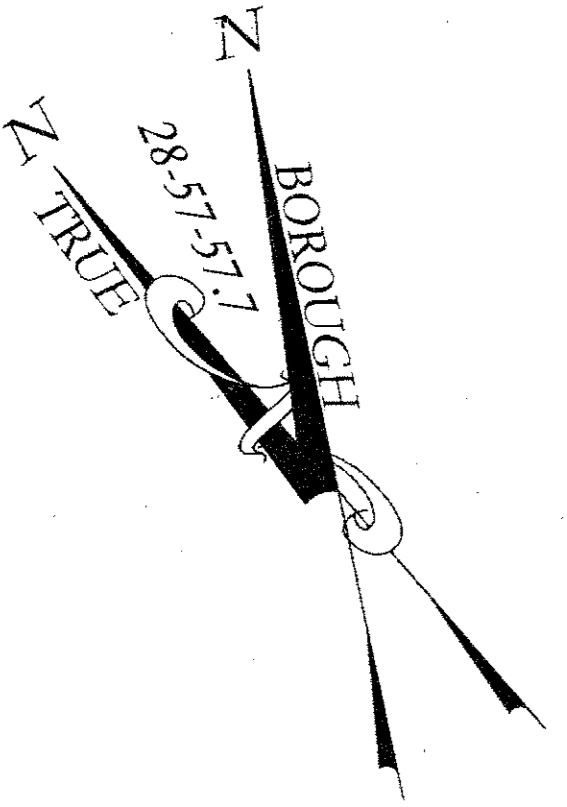
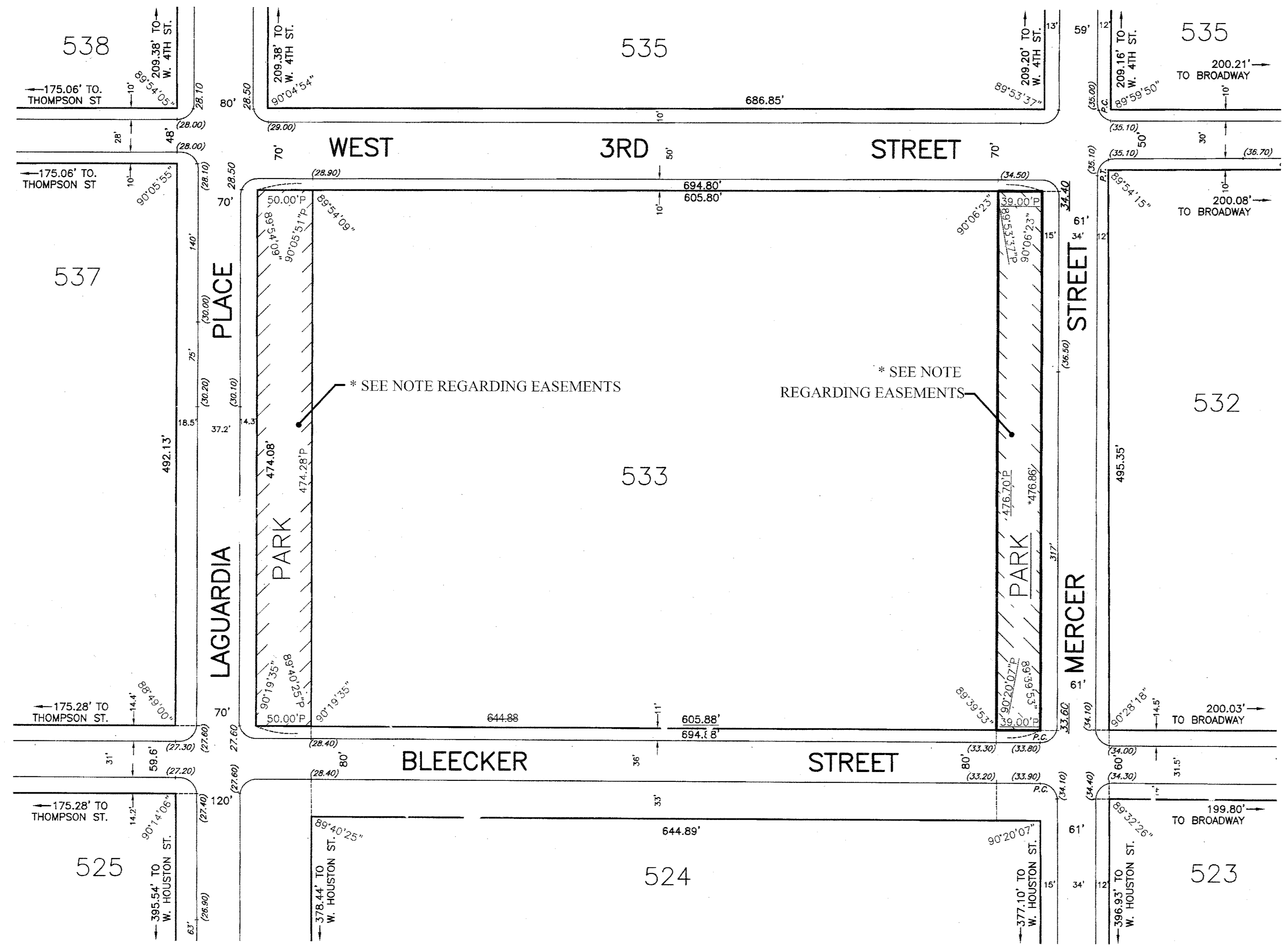
*Scott M. Stringer* 11/30, 2012  
SCOTT M. STRINGER DATE  
PRESIDENT  
BOROUGH OF MANHATTAN

*Maria Mikolajczyk*  
MARIA MIKOLAJCZYK, P.E.  
CONSULTING ENGINEER  
BOROUGH OF MANHATTAN

*Yvette V. Gruel*  
Secretary, City Planning Commission

I, Yvette V. Gruel, Secretary of the City Planning Commission, do hereby certify that this map is one of 0 similar maps approved by the City Planning Commission on the 6<sup>th</sup> day of June, 2012 (Calendar No. 3) and subsequently approved by the City Council on July 25, 2012 (Res. No. 1466), which action comprised final approval and that this map was filed on the date of this certification and will take effect on the following day. Dated, New York October 9, 2012

Reference Maps: Alteration Map No.	*C.P. No.	*Date Filed
29453	12574	12/06/1956
29481	12670	08/07/1957
29554	14092	10/31/1958
29627	14754	03/14/1960



PREPARED BY:  
SITE/CIVIL ENGINEER

**AKRF**  
AKRF ENGINEERING, P.C.  
440 PARK AVENUE SOUTH  
NEW YORK, N.Y. 10016  
(212) 696-0670 (PHONE)  
(212) 726-0942 (FAX)



Geometry shown on this drawing has been certified by AKRF Engineering P.C., 440 Park Avenue South, New York, NY 10016 and is based on a survey prepared by Langan Engineering & Environmental Services on March 24, 2009.