

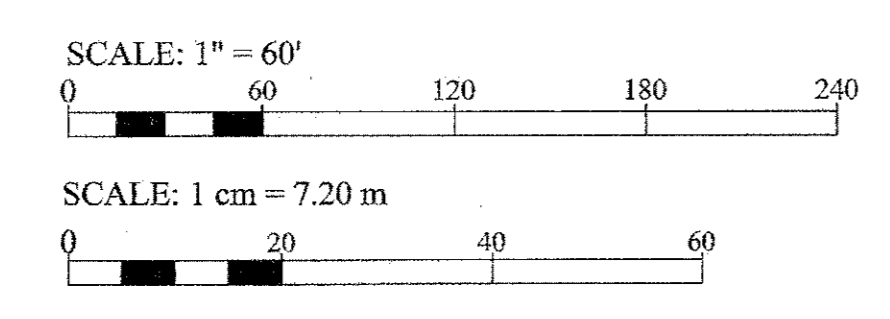
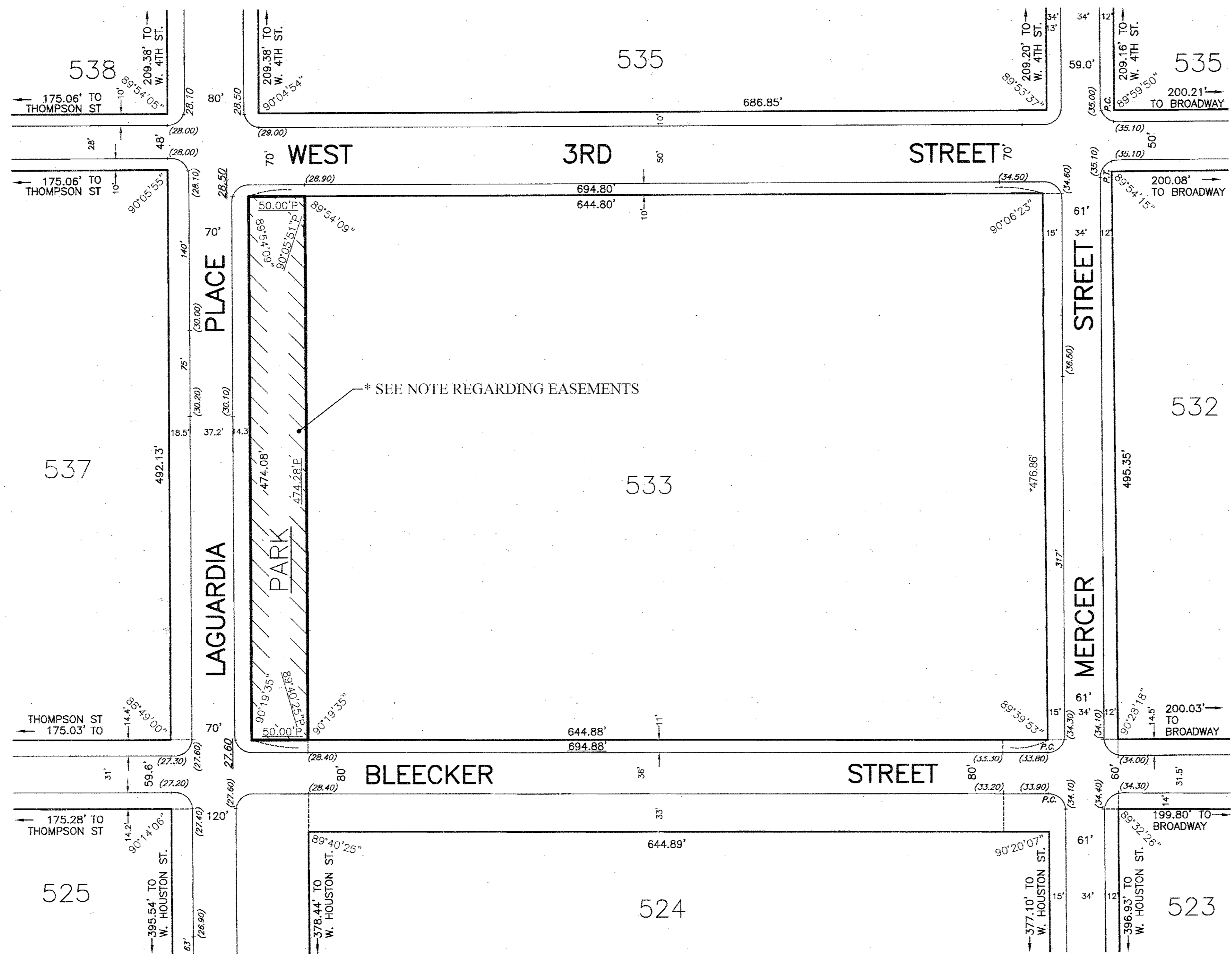
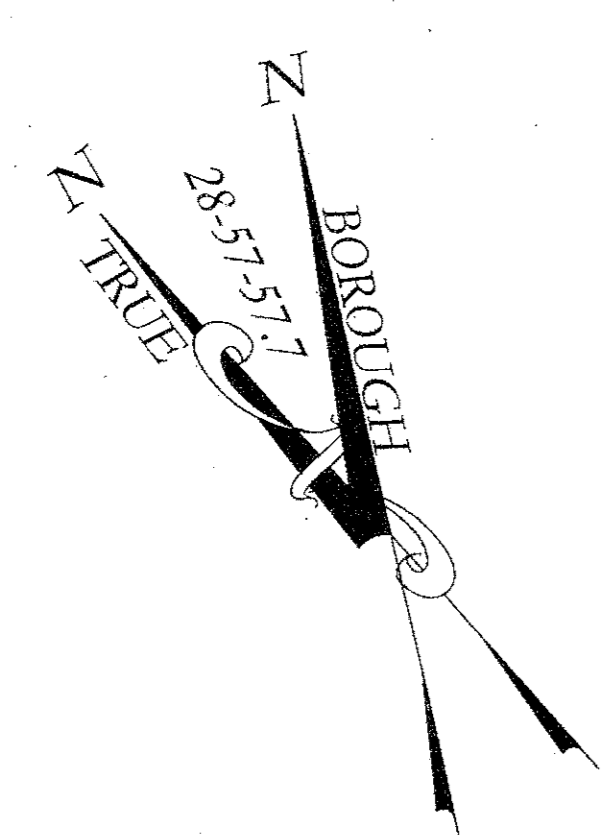
LEGEND

- Indicates street line heretofore established and hereby retained.
- ===== Indicates street line hereby established.
- Indicates street line heretofore established and hereby eliminated.
- ====+==== Indicates roadway and sidewalk treatment heretofore established and hereby retained.
- 200.08' Indicates dimension heretofore established and hereby retained.
- 48.50'P Indicates park dimension hereby established.
- 525 Indicates Manhattan tax block number.
- (38.60) Indicates existing grade.
- 28.10 Indicates elevation heretofore established and hereby retained.
- 34.40 Indicates elevation hereby established.
- 131' Indicates tie-in distance to an elevation heretofore established and hereby retained.
- 45' Indicates roadway and sidewalk treatment dimension heretofore established and hereby retained.
- 89°40'25" Indicates interior angle of block lines heretofore established and hereby retained.
- 90°12'20"P Indicates interior angle of park lines hereby established.
- P.C. Indicates point of curvature heretofore established and hereby retained.
- P.T. Indicates point of tangency heretofore established and hereby retained.



NOTE

- All dimensions are in feet.
- Elevations apply to top of curb unless otherwise indicated.
- Elevations refer to the datum of the Borough of Manhattan, which is 2.750 feet (0.838 meters) above mean sea level at the U.S.C & G. Survey Datum at Sandy Hook, New Jersey.
- * The proposed park is subject to a recorded easement agreement with the adjacent property owner for purposes of construction, utilities and access.



APPROVED FOR NEW YORK CITY DEPARTMENT OF PARKS AND RECREATION

Adrian Benepe 5/30/2012
 ADRIAN BENEPE DATE
 COMMISSIONER

CITY OF NEW YORK
 OFFICE OF THE PRESIDENT BOROUGH OF MANHATTAN
 TOPOGRAPHIC BUREAU

MAP ACC. NO. 30234

SHOWING
 THE ESTABLISHMENT OF A
PARK
 BOUNDED BY
 LA GUARDIA PLACE,
 BLEECKER STREET AND WEST 3RD STREET
 AND
 THE ADJUSTMENT OF GRADES NECESSITATED
 THEREBY

DATED: December 22, 2011

REVISED: June 6, 2012

*TECHNICAL CORRECTIONS: FEBRUARY 4, 2015

Scott M. Stringer 5/30/2012 DATE
 SCOTT M. STRINGER PRESIDENT
 BOROUGH OF MANHATTAN

Maria Mikolajczyk
 MARIA MIKOLAJCZYK, P.E.
 CONSULTING ENGINEER
 BOROUGH OF MANHATTAN

PREPARED BY:
 SITE/CIVIL ENGINEER
AKRF
 AKRF ENGINEERING, P.C.
 440 PARK AVENUE SOUTH
 NEW YORK, NY 10016
 (212) 696-0670 (PHONE)
 (212) 726-0942 (FAX)



Geometry shown on this drawing has been certified by AKRF Engineering P.C., 440 Park Avenue South, New York, NY 10016 and is based on a survey prepared by Langan Engineering & Environmental Services on March 24, 2009.

Reference Maps: Alteration Map No.	* C.P. No.	* Date Filed
29453	12574	12/06/1956
29481	12670	08/07/1957
29554	14092	10/31/1958
29627	14754	03/10/1960

I, Yvette V. Gruel, Secretary of the City Planning Commission, do hereby certify that this map is one of 8 similar maps approved by the City Planning Commission on the 6th day of June, 2012 (Calendar No. 6) and subsequently approved by the City Council on July 25, 2012 (Res. No. 1466), which action comprised final approval and that this map was filed on the date of this certification and will take effect on the following day.
 Dated, New York October 9, 2015

Yvette V. Gruel
 Secretary, City Planning Commission