

LEGEND

- Indicates street line heretofore established and hereby retained.
- Indicates street line hereby established.
- Indicates street line heretofore established and hereby eliminated.
- ==== Indicates roadway and sidewalk treatment heretofore established and hereby retained.
- ==== Indicates dimension heretofore established and hereby retained.
- ==== Indicates dimension hereby established.
- 525 Indicates Manhattan tax block number.
- (37.70) Indicates existing grade.
- 28.10 Indicates elevation heretofore established and hereby retained.
- 151' Indicates tie-in distance to an elevation heretofore established and hereby retained.
- 15' Indicates roadway and sidewalk treatment dimension hereby established.
- 45' Indicates roadway and sidewalk treatment dimension heretofore established and hereby retained.
- 54' Indicates roadway and sidewalk treatment dimension heretofore established and hereby eliminated.
- 89°40'25" Indicates interior angle of block lines heretofore established and hereby retained.
- 89°06'23" Indicates interior angle of block lines heretofore established and hereby eliminated.
- 80°06'23" Indicates interior angle of block lines hereby established.
- P.C. Indicates point of curvature heretofore established and hereby retained.
- P.T. Indicates point of tangency heretofore established and hereby retained.

NOTE

- All dimensions are in feet.
- Elevations apply to top of curb unless otherwise indicated.
- Elevations refer to the datum of the Borough of Manhattan, which is 2.750 feet (0.838 meters) above mean sea level at the U.S.C & G. Survey Datum at Sandy Hook, New Jersey.

Yvonne V. Gravel, Secretary of the City Planning Commission, do hereby certify that this map is one of 7 similar maps approved by the City Planning Commission on the 6th day of June, 2012 (Calendar No. 8) and subsequently approved by the City Council on July 25, 2012 (Res. No. 1466), which action comprised final approval and that this map was filed on the date of this certification and will take effect on the following day.
Dated, New York July 28, 2015

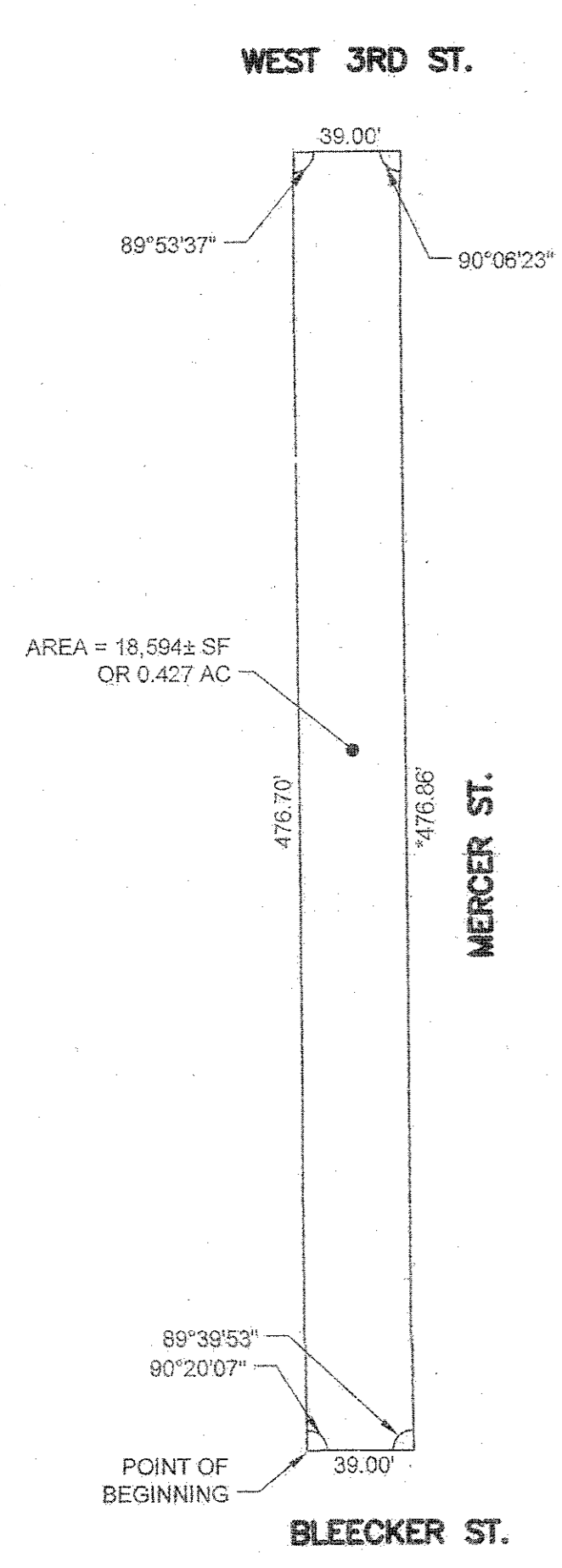
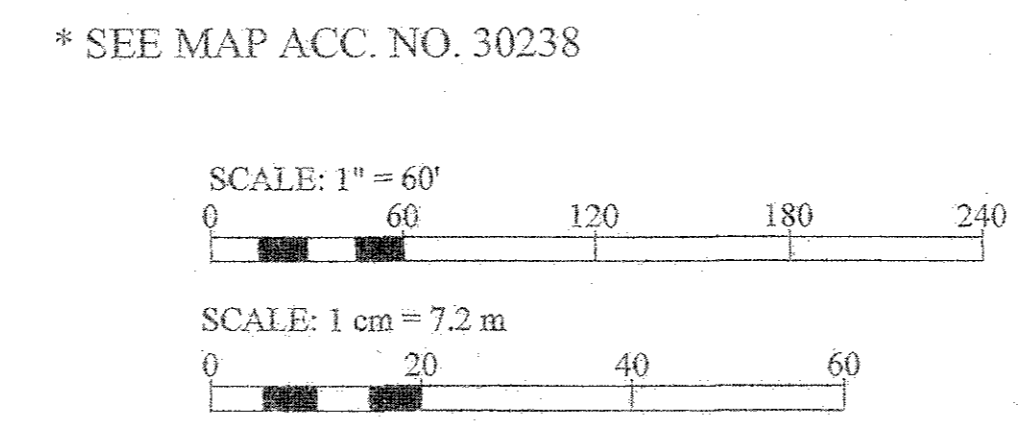
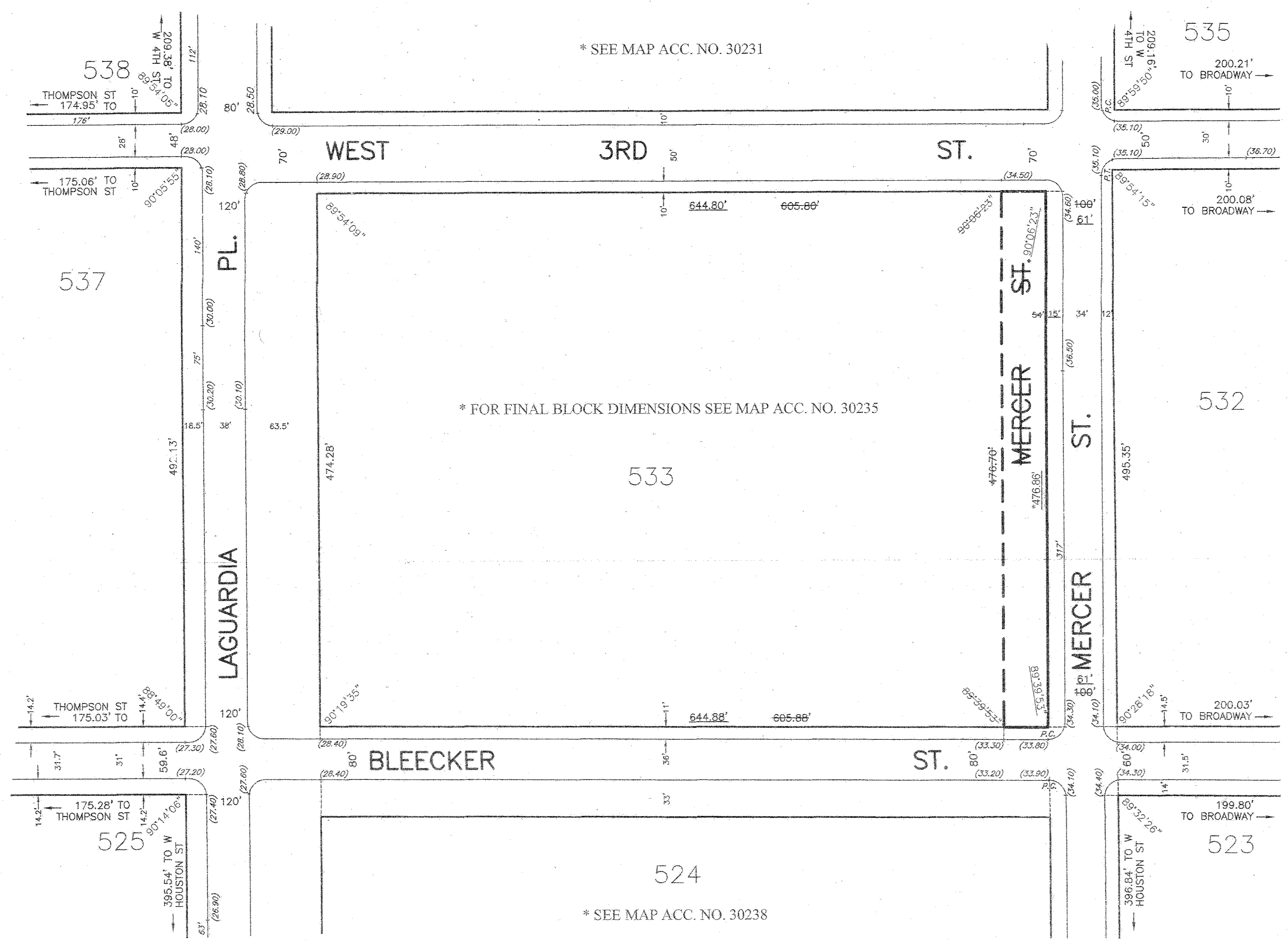
Yvonne V. Gravel
Secretary, City Planning Commission

CITY OF NEW YORK
OFFICE OF THE PRESIDENT BOROUGH OF MANHATTAN
TOPOGRAPHIC BUREAU
MAP ACC. NO. 30233
SHOWING
THE NARROWING,
BY ELIMINATION, DISCONTINUANCE AND CLOSING,
OF
MERCER STREET
BETWEEN
BLEECKER STREET AND WEST 3RD STREET

DATED: **DECEMBER 22, 2011**
*TECHNICAL CORRECTIONS: FEBRUARY 4, 2015

Scott M. Stringer
SCOTT M. STRINGER
PRESIDENT
BOROUGH OF MANHATTAN

Maria Mikolajczyk
MARIA MIKOLAJCZYK, P.E.
CONSULTING ENGINEER
BOROUGH OF MANHATTAN



INSET: DISCONTINUANCE AND CLOSING
IN MERCER STREET
N.T.S.

PREPARED BY:
SITE/CIVIL ENGINEER
AKRF
AKRF ENGINEERING, P.C.
440 PARK AVENUE SOUTH
NEW YORK, NY 10016
(212) 696-0670 (PHONE)
(212) 726-0942 (FAX)

Geometry shown on this drawing has been certified by AKRF Engineering P.C., 440 Park Avenue South, New York, NY 10016 and is based on a survey prepared by Langan Engineering & Environmental Services on March 24, 2009.

Reference Maps: Alteration Map No.	*C.P. No.	*Date Filed
29453	12574	12/06/1956
29481	12670	08/07/1957
29554	14092	10/31/1958
29627	14754	03/10/1960