

CITY OF NEW YORK, BOROUGH OF MANHATTAN
 OFFICE OF THE PRESIDENT
 TOPOGRAPHIC BUREAU
MAP No. 30226
 SHOWING
THE ESTABLISHMENT
 OF
WEST 129TH STREET
 WESTERLY FROM ITS TERMINUS OF A CUL-DE-SAC BETWEEN
FREDERICK DOUGLASS BOULEVARD
 AND
ADAM CLAYTON POWELL JR. BOULEVARD
 AND SHOWING
THE ELIMINATION AND DISCONTINUANCE AND CLOSING
 OF A PORTION OF A CUL-DE-SAC IN
WEST 129TH STREET
 AND THE ADJUSTMENT OF GRADES NECESSITATED THEREBY BETWEEN
FREDERICK DOUGLASS BOULEVARD
 AND
ADAM CLAYTON POWELL JR. BOULEVARD

DATED: NOVEMBER 8, 2010
 TECHNICAL CORRECTIONS: **OCTOBER 24, 2011**

Scott M. Stringer
 SCOTT M. STRINGER
 PRESIDENT
 BOROUGH OF MANHATTAN

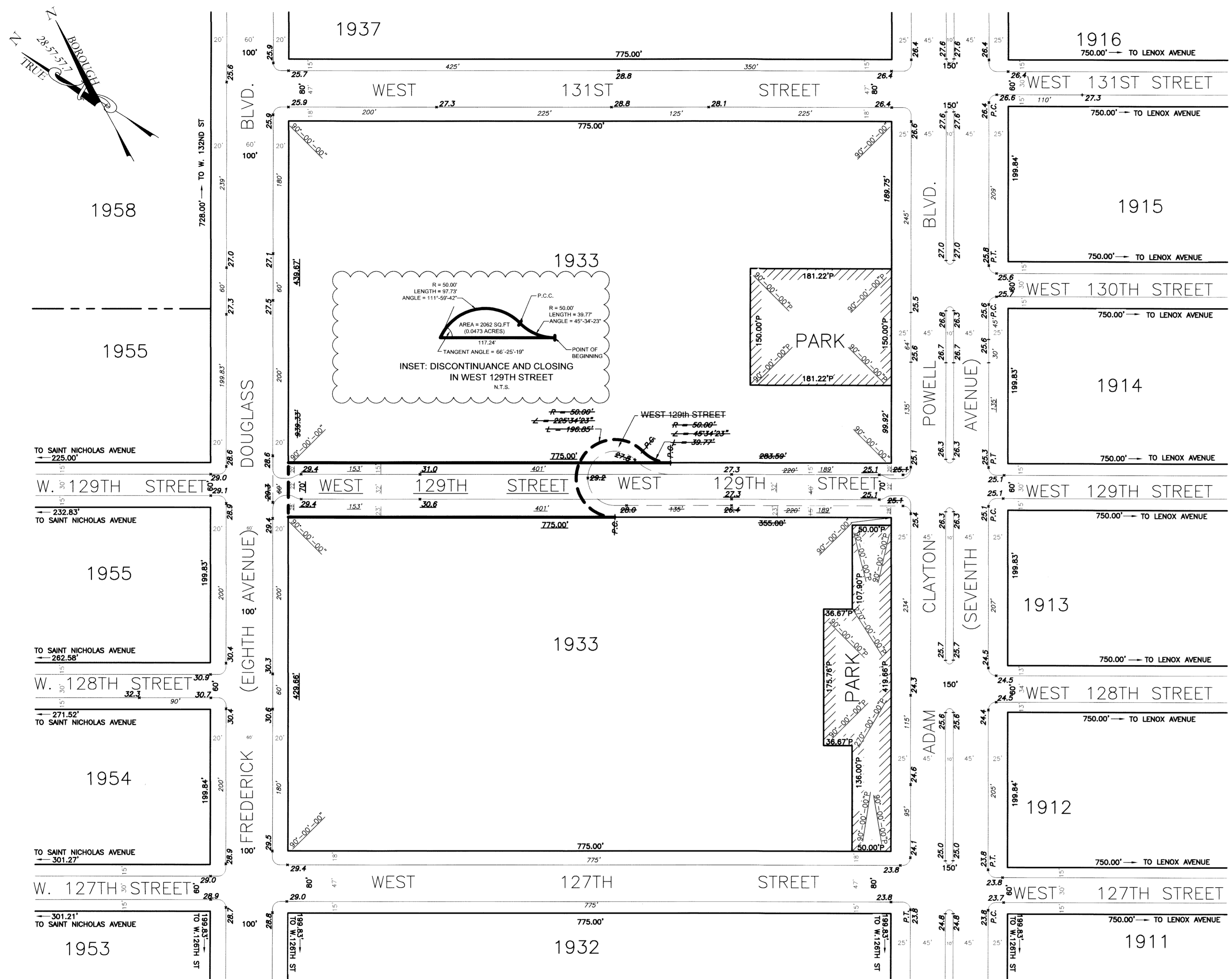
Maria Mikolajczyk, P.E.
 MARIA MIKOLAJCZYK, P.E.
 CONSULTING ENGINEER
 BOROUGH OF MANHATTAN

LEGEND

- Indicates street line heretofore established and hereby retained.
- Indicates street line hereby established.
- Indicates street line heretofore established and hereby eliminated.
- Indicates roadway and sidewalk treatment heretofore established and hereby retained.
- Indicates roadway and sidewalk treatment heretofore established and hereby eliminated.
- Indicates tax block boundary line heretofore established and hereby retained.
- Indicates dimension heretofore established and hereby retained.
- Indicates dimension hereby established.
- Indicates dimension heretofore established and hereby eliminated.
- Indicates park dimension heretofore established and hereby retained.
- 1955** Indicates Manhattan tax block number.
- 29.3** Indicates elevation hereby established.
- 32.3** Indicates elevation heretofore established and hereby retained.
- 36.3** Indicates elevation heretofore established and hereby eliminated.
- 234'** Indicates tie-in distance to an elevation heretofore established and hereby retained.
- 401'** Indicates tie-in distance to an elevation hereby established.
- 32'** Indicates roadway and sidewalk treatment dimension hereby established.
- 20'** Indicates roadway and sidewalk treatment dimension heretofore established and hereby retained.
- 4+** Indicates roadway and sidewalk treatment dimension heretofore established and hereby eliminated.
- PARK** Indicates park heretofore established and hereby retained.

NOTE

- All dimensions are in feet.
- Elevations apply to top of curb unless otherwise indicated.
- Elevations refer to the datum of the Topographical Bureau, Borough of Manhattan, which is 2.750 feet (0.838 meters) above mean sea level at the U.S.C & G. Survey Datum at Sandy Hook, New Jersey.



Geometry shown on this drawing has been certified by Langan Engineering & Environmental Services and is based on a survey prepared by Vincent E. Zakrzewski, L.S. on August 31, 2010.

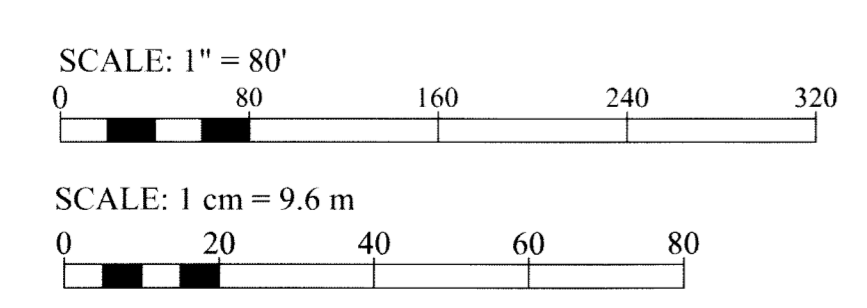
I, Yvette V. Gruel, Secretary of the City Planning Commission, do hereby certify that this map is one of seven similar maps approved by the City Planning Commission on March 30, 2011 (Calendar No. 8), which action comprised final approval, and that this map was filed on the date of this certification and will take effect on the following day.

Date in New York: **October 28, 2011**

Yvette V. Gruel
 Secretary of the City Planning Commission



PREPARED BY:
 SITE/CIVIL ENGINEER
AKRF
 AKRF ENGINEERING, P.C.
 440 PARK AVENUE SOUTH
 NEW YORK, NY 10016
 (212) 696-0670 (PHONE)
 (212) 726-0942 (FAX)



Copyright © 2010
 President Borough of Manhattan

References Maps:

ACC No.:	Date:
29215	03/05/1952
29021	01/12/1950
29145	09/08/1950
29214	10/05/1951