

SECTION 1
KEY PLAN
NOT TO SCALE

NOTES

- Indicates street line heretofore established and hereby retained.
- Indicates street line hereby established.
- Indicates street line heretofore established and hereby eliminated.
- Indicates roadway and sidewalk treatment hereby established or heretofore established and hereby retained.
- Indicates sidewalk easement line heretofore delineated.
- Indicates dimension heretofore established and hereby retained.
- Indicates dimension hereby established.
- Indicates dimension heretofore established and hereby eliminated.
- Indicates park dimension hereby established.
- Indicates Manhattan tax block number.
- Indicates elevation heretofore established and hereby retained.
- Indicates elevation heretofore established and hereby eliminated.
- Indicates elevation hereby established.
- Indicates Park or Park Addition hereby established.
- Indicates street lands to be discontinued and closed.
- Indicates tie-in distance to an elevation heretofore established and hereby retained.
- Indicates tie-in distance to an elevation heretofore established and hereby eliminated.
- Indicates roadway and sidewalk treatment dimension heretofore established and hereby retained.
- Indicates roadway and sidewalk treatment dimension hereby established.
- Indicates Point of Curvature.
- Indicates Point of Tangency.
- Indicates Point of Vertical Curvature.

Elevations refer to the datum of the Borough of Manhattan, which is 2.750 feet (0.838 meters) above the U.S.C. & G. Mean Sea Level Survey Datum at Sandy Hook, New Jersey.

Elevations are taken at top of curb unless otherwise noted.

Sidewalk dimensions shown are theoretically established for grade determination purposes only.

The name John DeLury, Sr. Plaza was assigned to the triangular area located at the intersection of Fulton Street and Gold Street, by Local Law 50 of 1980.

CONTENTS

- SHEET 1 TITLE SHEET AND KEY PLAN
- SHEET 2 PLAN
- SHEET 3 DISCONTINUANCE AND CLOSING MAP

REFERENCE MAPS

- ACC. NO. 29984 (CP 8783)
- ACC. NO. 29881 (CP 19358)
- ACC. NO. 29832 (CP 19359)
- ACC. NO. 29765 (CP 16535)
- ACC. NO. 29608 (CP 14984)
- ACC. NO. 29564 (CP 9815)
- ACC. NO. 29485 (CP 6410)

I, **YVETTE V. GRUEL**, SECRETARY OF THE CITY PLANNING COMMISSION, DO HEREBY CERTIFY THAT THIS MAP IS ONE OF **EIGHT** SIMILAR MAPS APPROVED BY THE CITY PLANNING COMMISSION ON THE **11th** DAY OF **August**, 20**08** (CALENDAR NO. **25**) AND SUBSEQUENTLY APPROVED BY THE **CITY COUNCIL** ON **MAY 1, 2008** WHICH ACTION COMPRISED FINAL APPROVAL AND THAT THESE MAPS WERE FILED ON THE DATE OF THIS CERTIFICATION AND WILL TAKE EFFECT ON THE FOLLOWING DAY.

DATE: NEW YORK October 15, 2008

Yvette V. Gruel
SECRETARY, CITY PLANNING COMMISSION

CITY OF NEW YORK
OFFICE OF THE PRESIDENT BOROUGH OF MANHATTAN
TOPOGRAPHIC BUREAU

MAP ACC NO. 30224
SHOWING
THE ELIMINATION, DISCONTINUANCE AND CLOSING
OF A PORTION OF
FULTON STREET, AND JOHN DELURY SR. PLAZA
AND THE ESTABLISHMENT OF
DELURY SQUARE PARK

AND
THE ADJUSTMENT OF BLOCK DIMENSIONS AND LEGAL GRADES
WITHIN THE AREA BOUNDED
BY
FRANKFORT STREET, PEARL STREET, FULTON STREET AND GOLD STREET

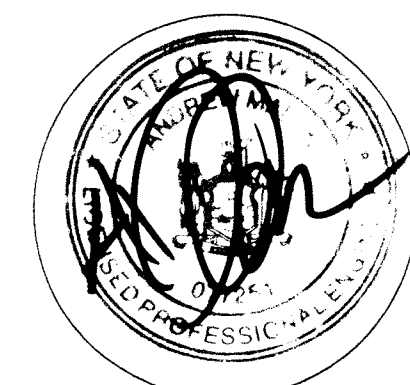
Scott M. Stringer
SCOTT M. STRINGER
PRESIDENT, BOROUGH OF MANHATTAN

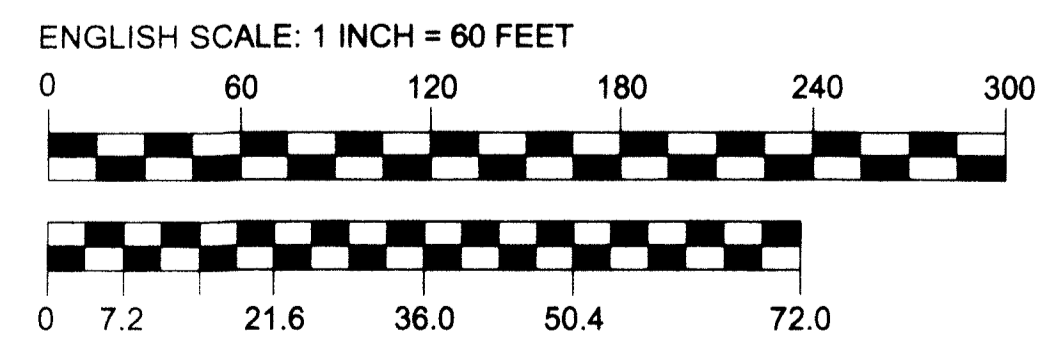
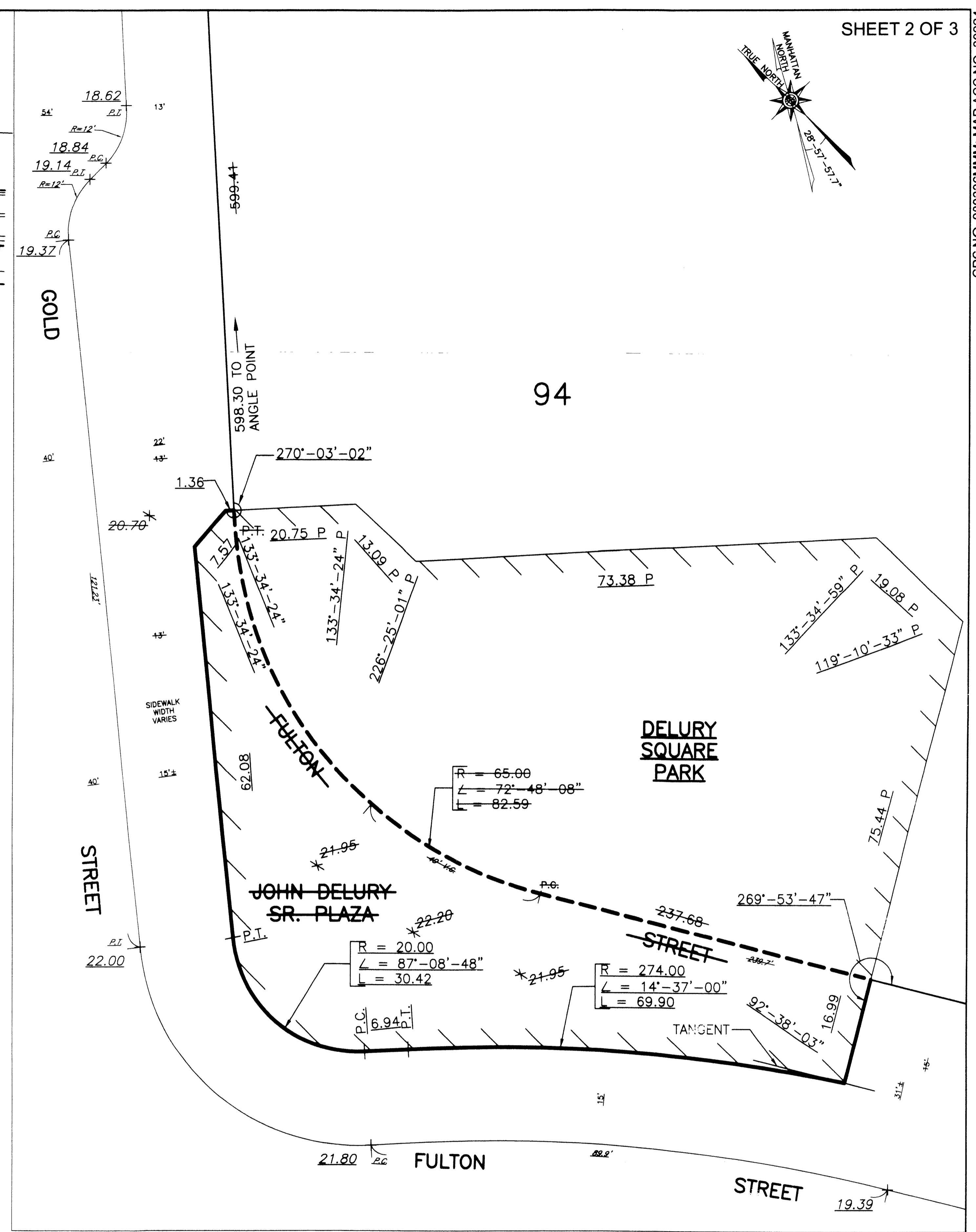
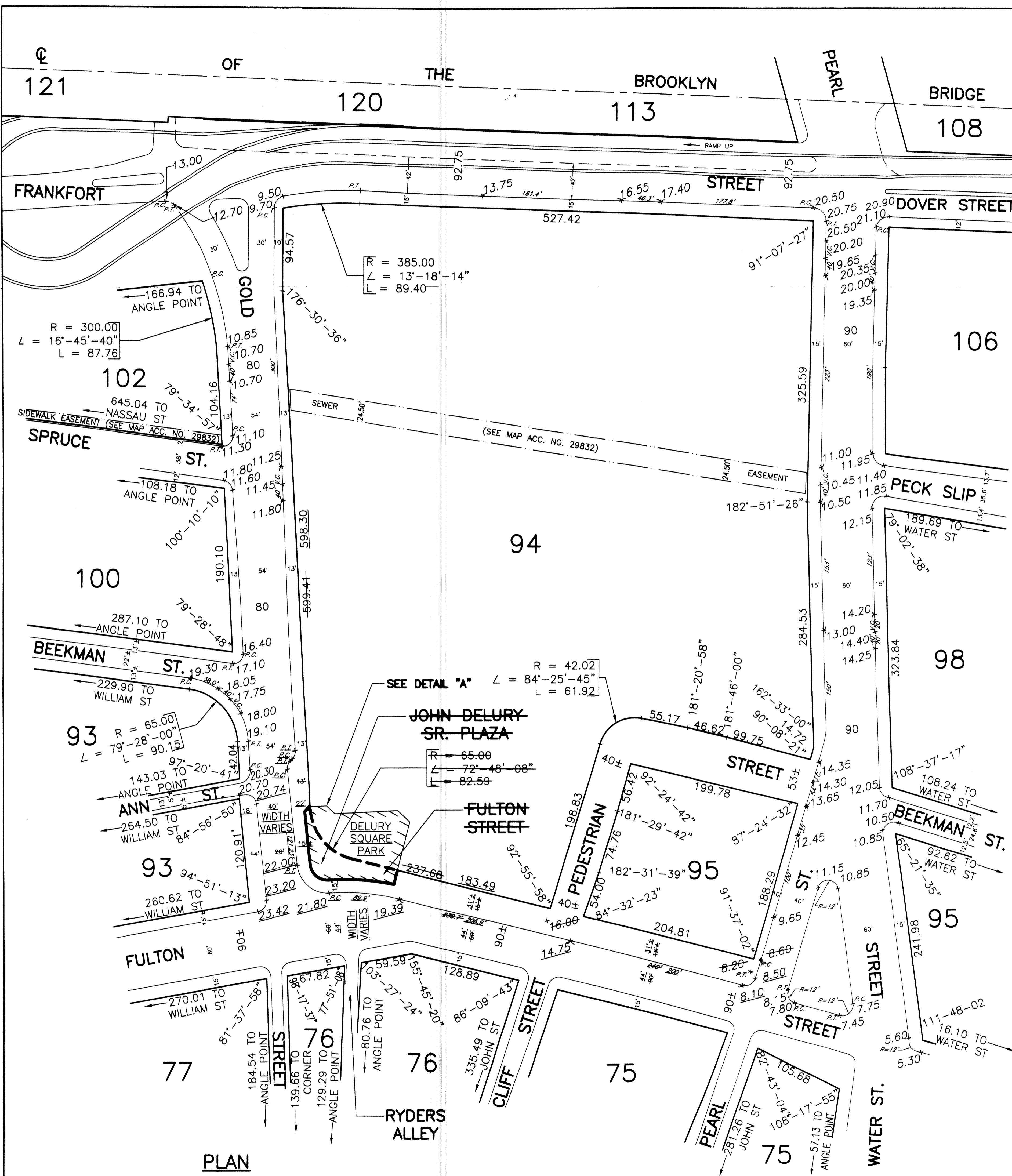
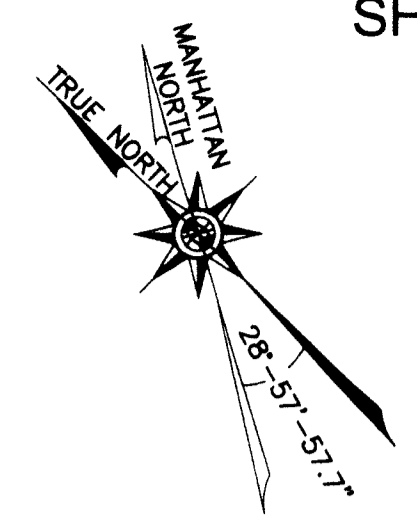
May 1, 2008
DATE

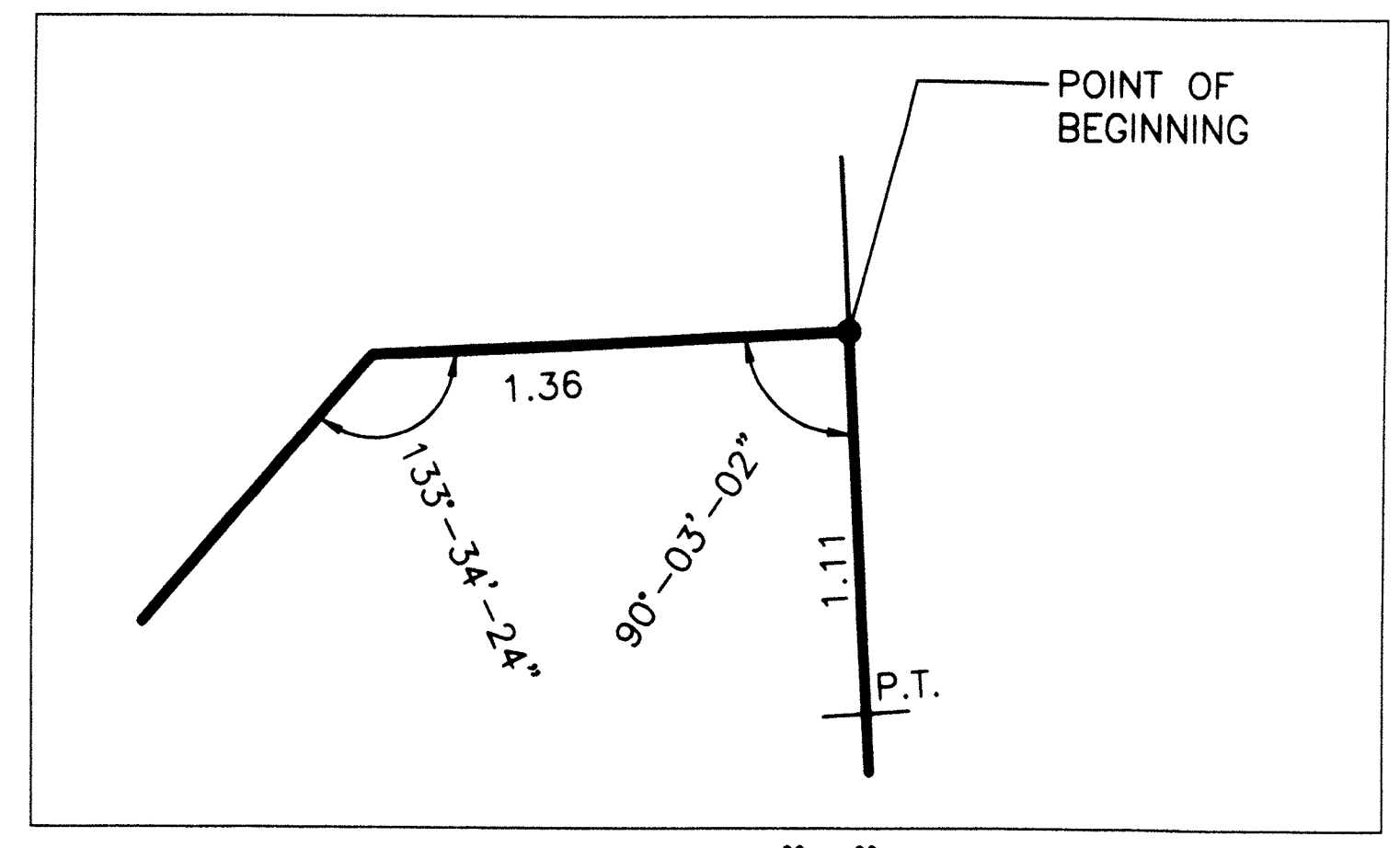
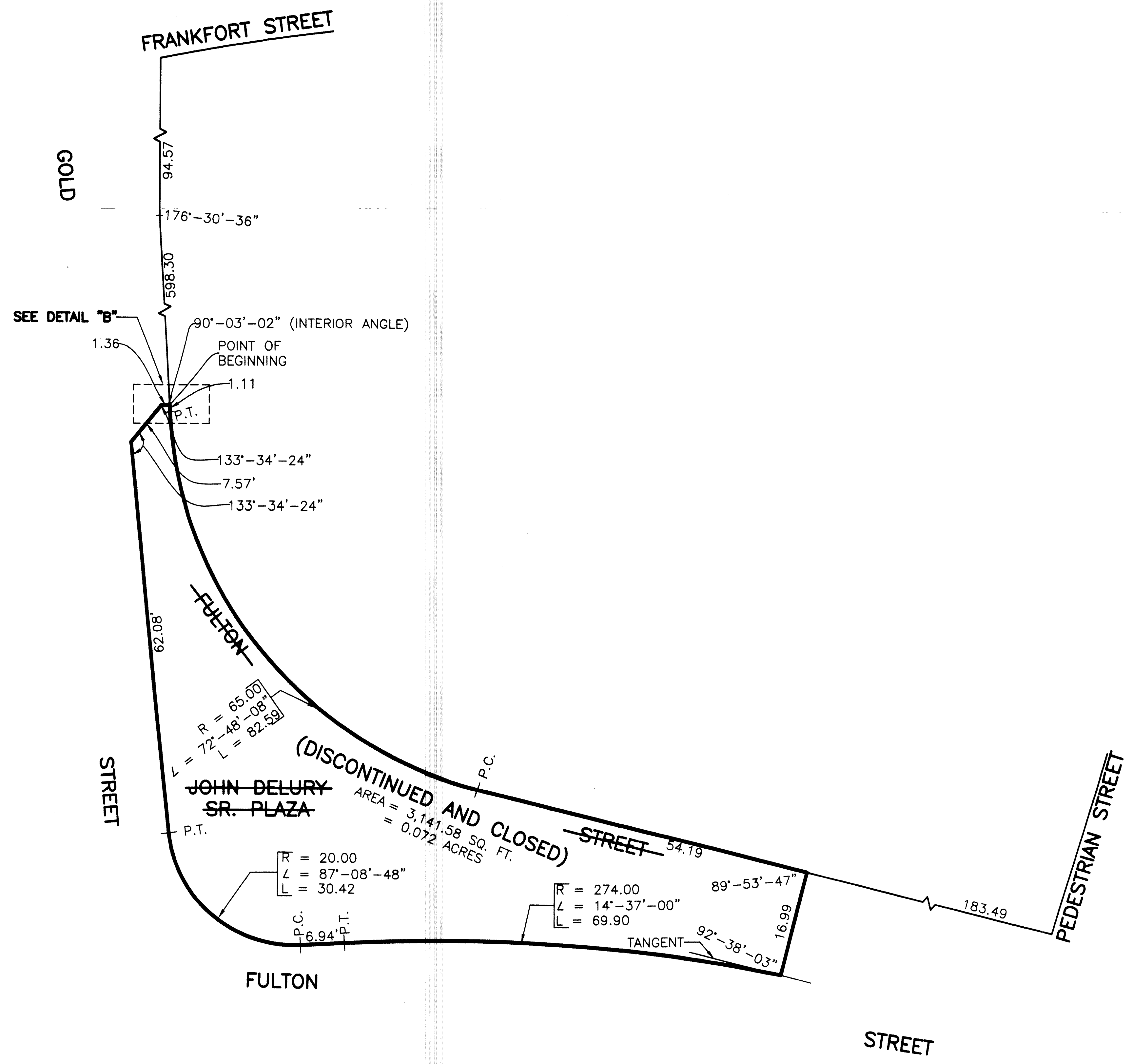
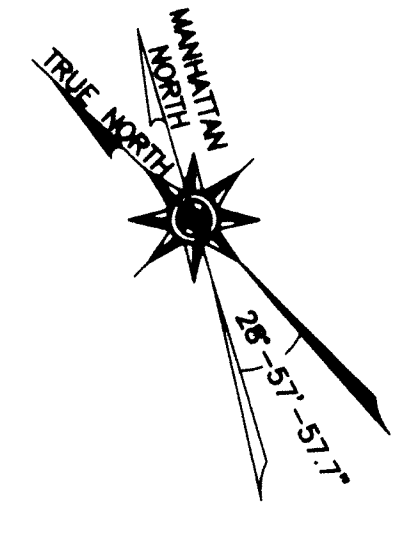
APPROVED FOR
DEPARTMENT OF PARKS AND RECREATION

Elvi Benayre
COMMISSIONER OF PARKS AND RECREATION

Anthony J. Subota
ANTHONY J. SUBOTA
CONSULTING ENGINEER P.E.







DETAIL "B"
NOT TO SCALE

DISCONTINUANCE AND CLOSING MAP
SCALE 1" = 10'