

NOTES

- INDICATES STREET LINE HERETOFORE ESTABLISHED AND HEREBY ELIMINATED.
- INDICATES MANHATTAN TUNNEL APPROACH LINE HERETOFORE ESTABLISHED AND HEREBY ELIMINATED.
- INDICATES STREET LINE HERETOFORE ESTABLISHED AND HEREBY RETAINED.
- INDICATES PLAZA UNDERPASS STREET LINE HERETOFORE ESTABLISHED AND HEREBY RETAINED.
- INDICATES EXISTING ROADWAY AND SIDEWALK TREATMENT LINE HERETOFORE ESTABLISHED AND HEREBY RETAINED.
- INDICATES ANGLE HERETOFORE ESTABLISHED AND HEREBY RETAINED.
- INDICATES DIMENSION HERETOFORE ESTABLISHED AND HEREBY RETAINED.
- INDICATES DIMENSION HERETOFORE ESTABLISHED AND HEREBY ELIMINATED.
- INDICATES ELEVATION HERETOFORE ESTABLISHED AND HEREBY RETAINED.
- INDICATES SIDEWALK AND ROADWAY TREATMENT DIMENSION HERETOFORE ESTABLISHED AND HEREBY RETAINED.
- INDICATES EASEMENT DIMENSION HERETOFORE DELINEATED AND HEREBY RETAINED.
- INDICATES TIE-IN DISTANCES HERETOFORE ESTABLISHED AND HEREBY RETAINED.
- INDICATES TIE-IN DISTANCES HERETOFORE ESTABLISHED AND HEREBY ELIMINATED.
- INDICATES NO VEHICULAR ACCESS LINE HERETOFORE DELINEATED AND HEREBY ELIMINATED.
- INDICATES SEWER EASEMENT LINE HERETOFORE DELINEATED AND HEREBY RETAINED.
- INDICATES ACCESS EASEMENT LINE HERETOFORE DELINEATED AND HEREBY RETAINED.
- INDICATES SIDEWALK EASEMENT LINE HERETOFORE DELINEATED AND HEREBY RETAINED.
- INDICATES MANHATTAN TUNNEL APPROACH LINE HERETOFORE DELINEATED.
- INDICATES MANHATTAN TUNNEL APPROACH LINE AS LAID OUT ON ACC. NO. 28744.
- INDICATES U.S. BULKHEAD LINE.
- INDICATES POINT OF CURVATURE.
- INDICATES POINT OF TANGENCY.
- INDICATES VERTICAL CURVATURE.
- INDICATES POINT OF INTERSECTION.
- INDICATES LENGTH OF VERTICAL CURVE.
- INDICATES PARK HERETOFORE ESTABLISHED AND HEREBY RETAINED.

REFERENCE MAPS:

ACC. NO.	DATE	CITY PLANNING NUMBER
30128	Dated May 1, 1990	C891045 MMM
30071	Dated 1983	C800983 MMM
28841	Dated March 10, 1947	CP4335
28744	Dated June 7, 1946	CP2351
28719	Dated October 6, 1941	CP3861
28658	Dated September 4, 1945	CP3861
28628	Dated May 4, 1945	CP3722
28201	Dated September 30, 1940	CP1794
27488	Dated June 24, 1936	
80159	Dated 1811	

I, Yvette V. Givoli, Secretary of the City Planning Commission, do hereby certify that this map is one of 7 similar maps approved by the City Planning Commission on Nov 15 2007 (Calendar No. 1) and subsequently approved by the City Council on Nov 15 2007 (Resolution No. 1155) which action comprised final approval and that this map was filed on the date of this certification and will take effect on the following day.

DATED: New York, Feb. 1, 2008

Yvette V. Givoli
Secretary, City Planning Commission

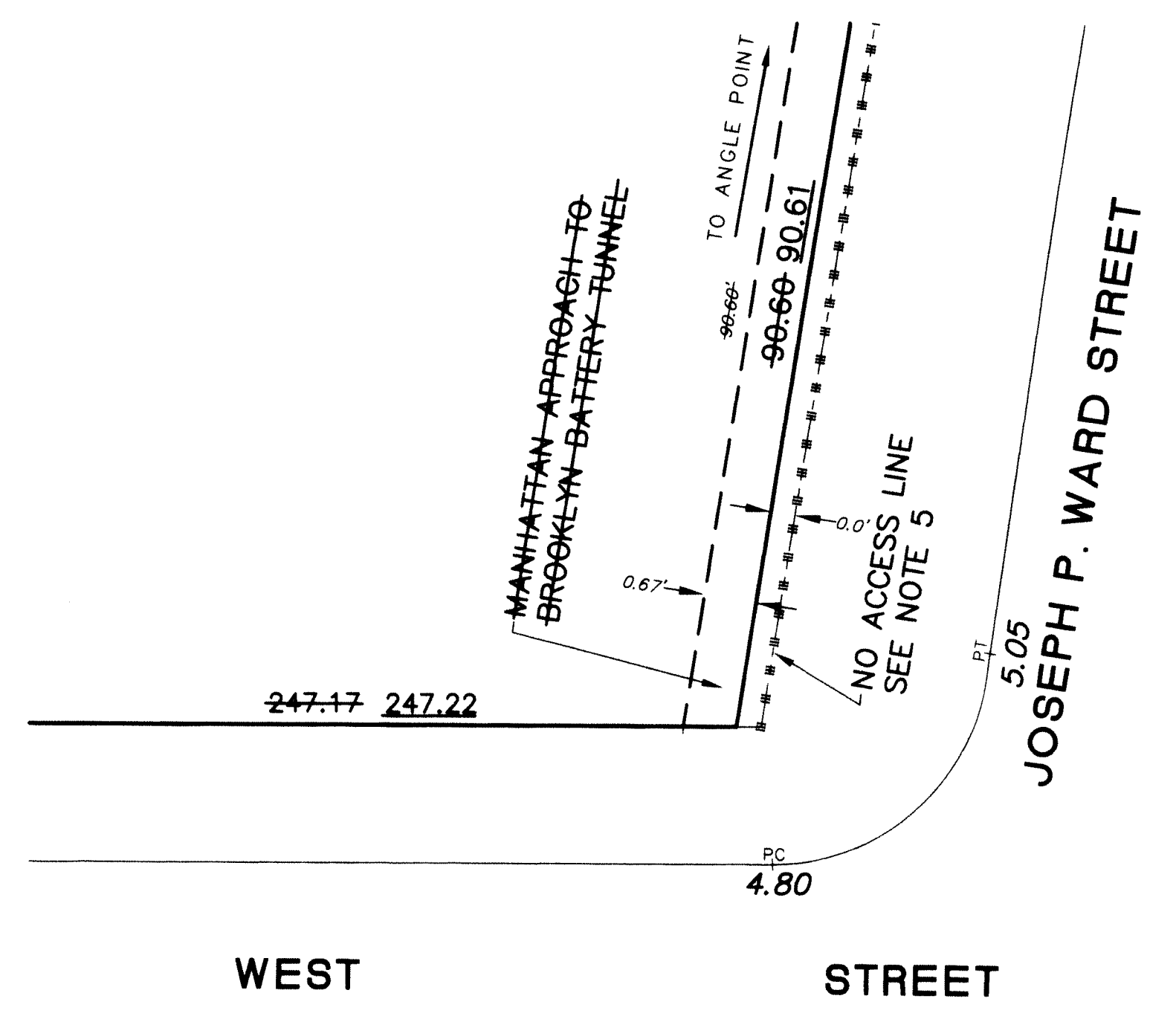
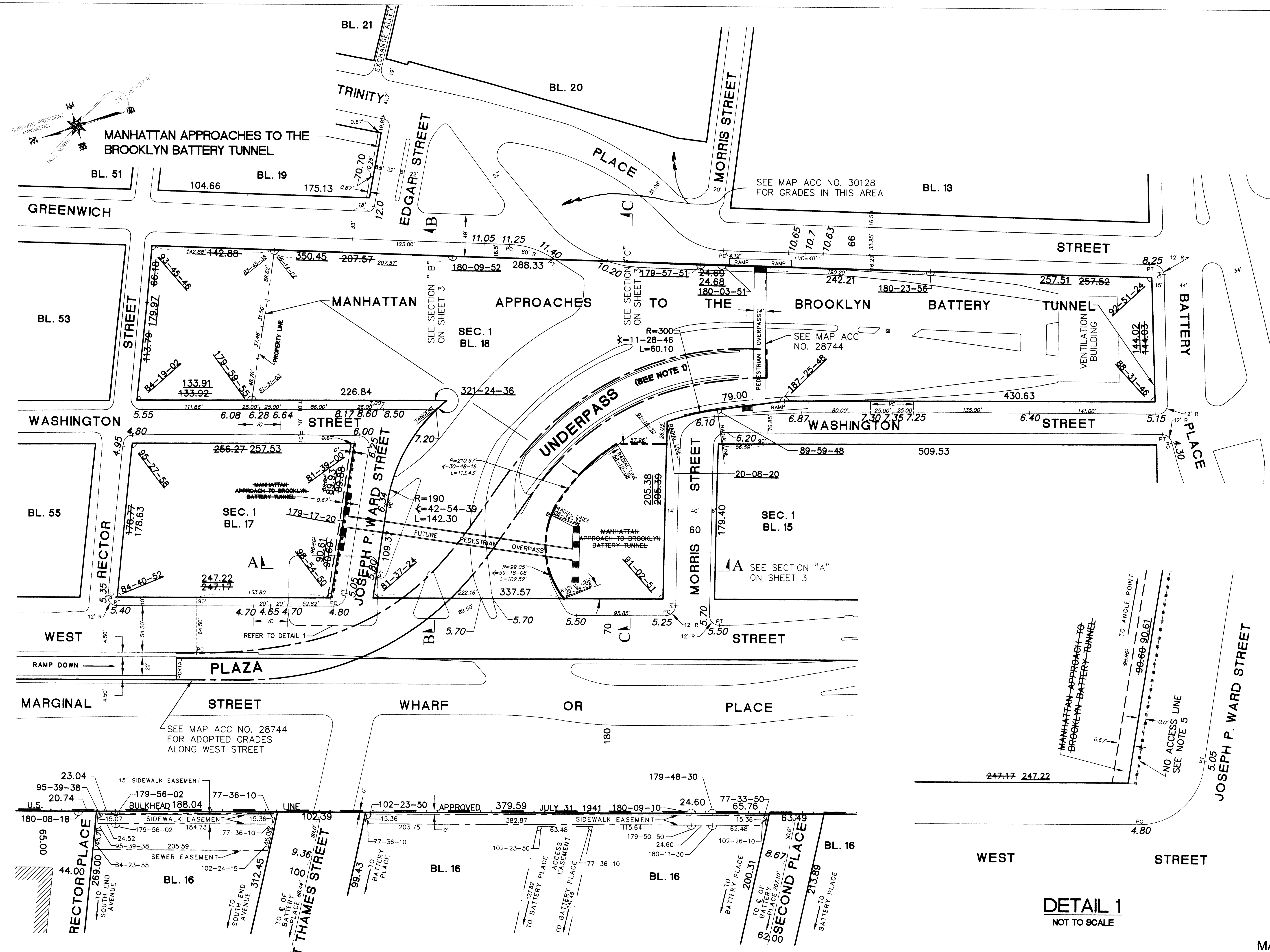
CITY OF NEW YORK
OFFICE OF THE PRESIDENT
TOPOGRAPHICAL BUREAU

MAP NO. 30222

SHOWING
THE ELIMINATION, DISCONTINUANCE AND CLOSING
OF
AN 8 INCH STRIP OF
MANHATTAN APPROACH TO THE BROOKLYN BATTERY TUNNEL
AND
VOLUMES OF
JOSEPH P. WARD ST. AND MANHATTAN APPROACH TO THE BROOKLYN BATTERY TUNNEL
BETWEEN
WEST STREET AND WASHINGTON STREET
AND
THE ADJUSTMENT OF BLOCK DIMENSIONS AND ANGLES
BETWEEN
RECTOR STREET, BATTERY PLACE, GREENWICH STREET AND WEST STREET

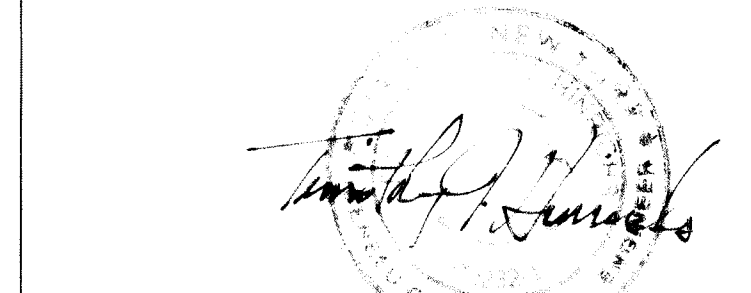
Robert M. Kline
PRESIDENT, BOROUGH OF MANHATTAN
Robert M. Kline
CONSULTING ENGINEER

April 25, 2007
DATE
Rev. 12/19/97



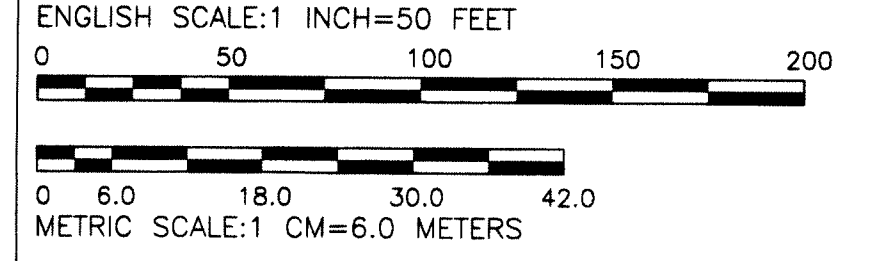
PLAN BELOW ELEVATION 37.2

Geometry shown on this drawing has been certified by Stantec Consulting Services, Inc. (formerly Vollmer Associates LLP), and is based on a survey prepared by Stantec Consulting Services, Inc. (formerly Vollmer Associates LLP) dated 04/18/07

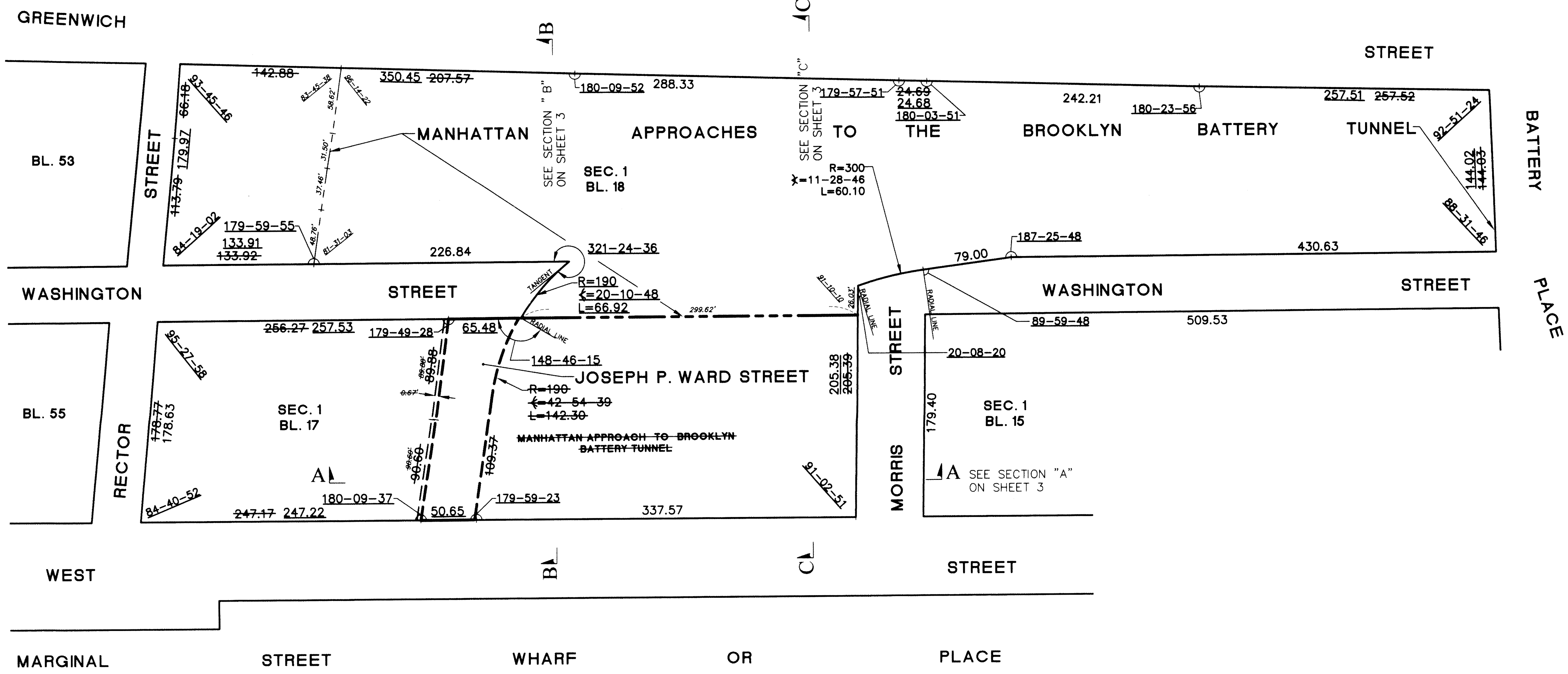
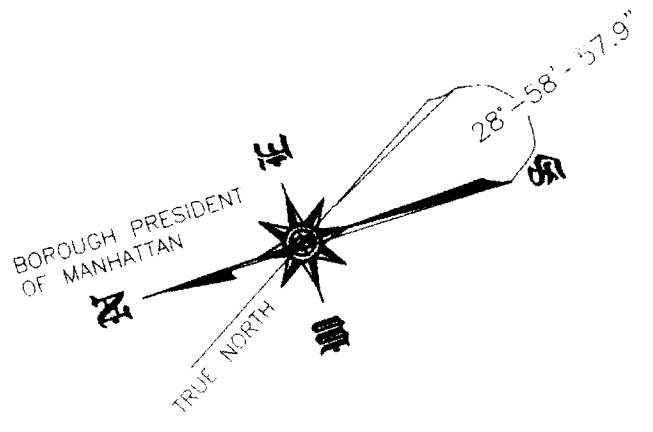


ELEVATIONS REFER TO THE DATUM OF THE BOROUGH OF MANHATTAN, WHICH IS 2.750 FEET (0.838 METERS) ABOVE THE U.S. & G. SURVEY DATUM AT SANDY HOOK, NEW JERSEY.

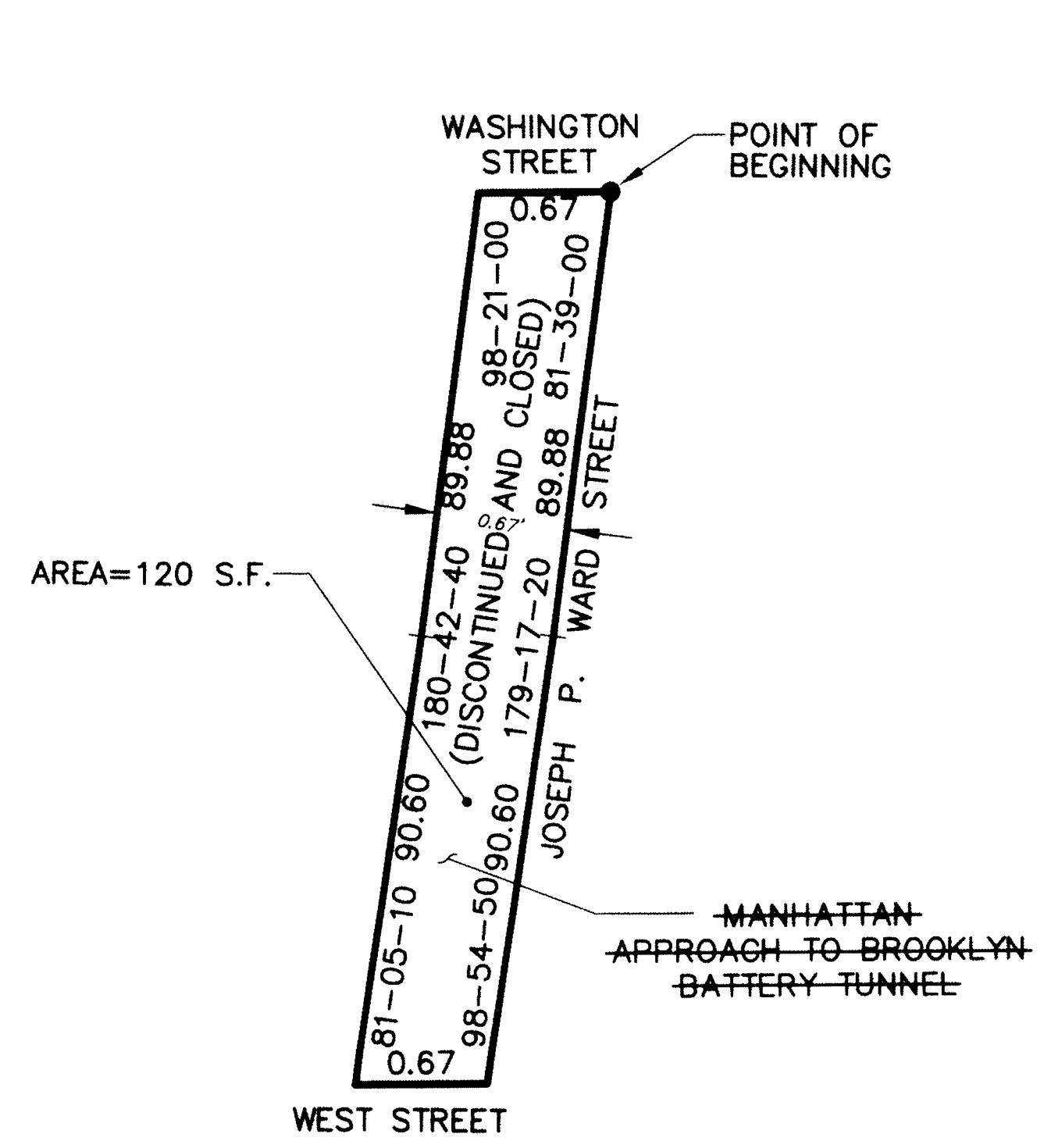
ELEVATIONS ARE TAKEN AT TOP OF CURB UNLESS OTHERWISE NOTED. SIDEWALK DIMENSIONS SHOWN ARE THEORETICALLY ESTABLISHED FOR GRADE DETERMINATION PURPOSES ONLY.



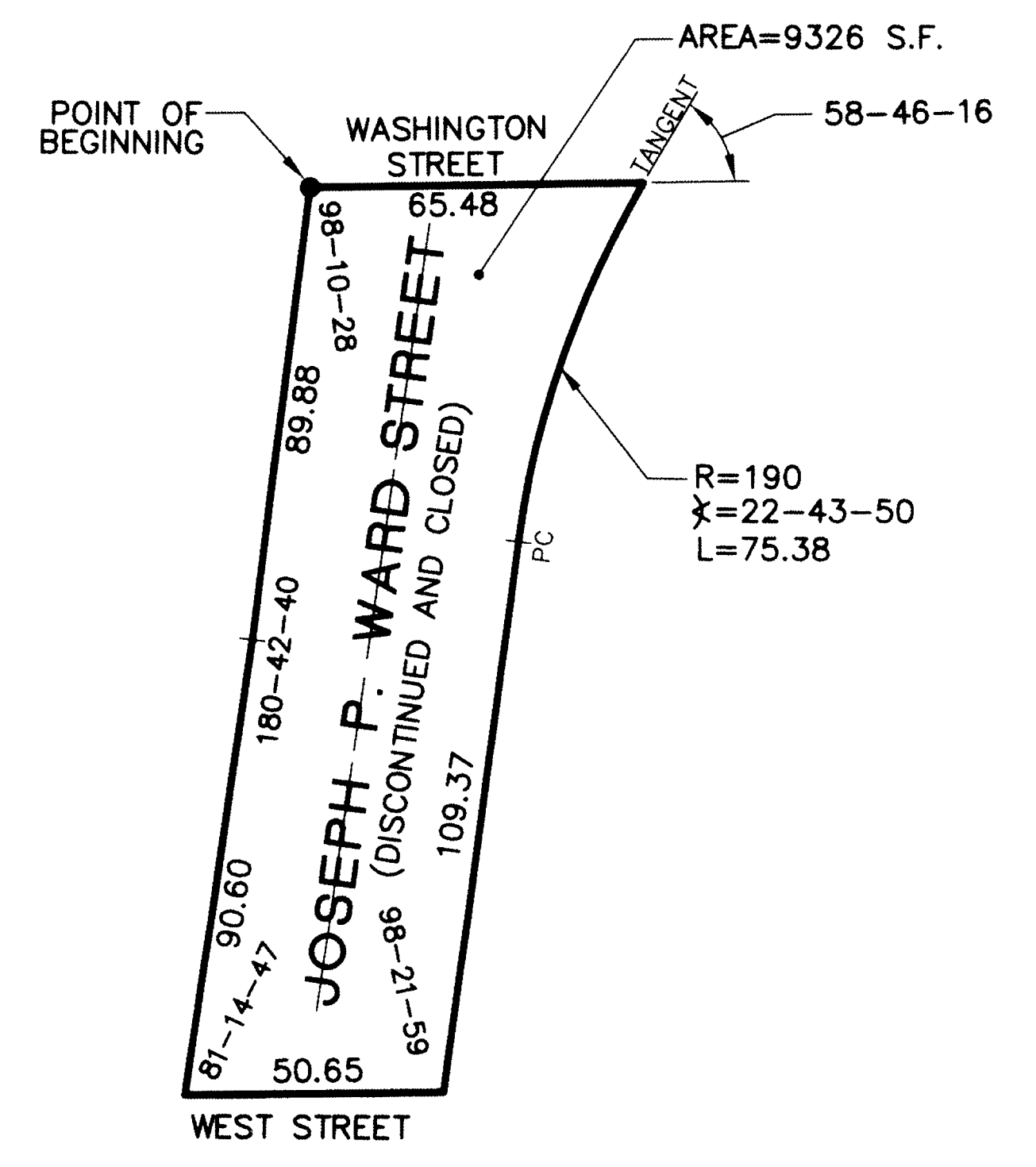
- NOTE 1: See ACC. No. 28744 for lines and grades of Plaza Underpass
- NOTE 2: The areas labeled as "MANHATTAN APPROACHES TO BROOKLYN BATTERY TUNNEL" refer to lands in which the City of New York acquired fee title, and which were assigned and dedicated to the New York City Tunnel Authority pursuant to an Agreement dated May 22, 1940, and as later amended, for the use and purpose of the Brooklyn Battery Tunnel Project. Under such Agreement, the City of New York retained title and rights in the lands used for the Tunnel Project, reserving to the Tunnel Authority and its successors exclusive use of the lands and rights in those lands as are dedicated to the Tunnel Authority in the Agreement. The Triborough Bridge and Tunnel Authority is the successor in interest to the noted "Tunnel Authority".
- NOTE 3: The right to construct a portion of the Battery Parking Garage over the Manhattan Approaches to the Brooklyn Battery Tunnel and over a "new street" (now Joseph P. Ward Street), as well as the right to install columns in the sidewalk of Joseph P. Ward Street, were authorized pursuant to an Agreement dated October 28, 1965, between the City of New York and the Triborough Bridge and Tunnel Authority.
- NOTE 4: Easements are shown for informational purposes only and are not officially part of the City Map.
- NOTE 5: There shall be no vehicular access, from BLOCK 17, into Joseph P. Ward Street, between Washington and West Streets.



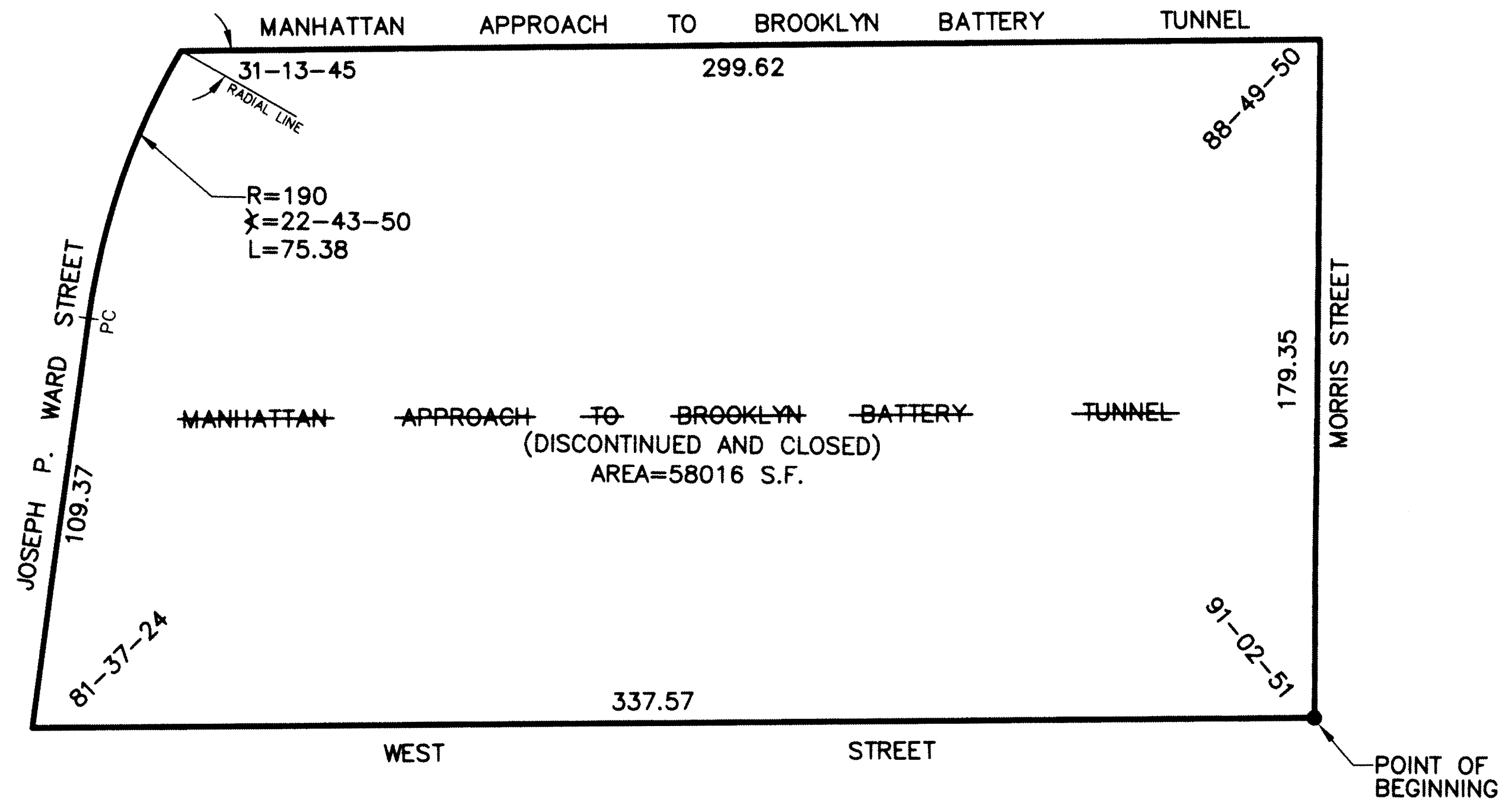
PLAN ABOVE ELEVATION 37.2
SCALE 1"=50'



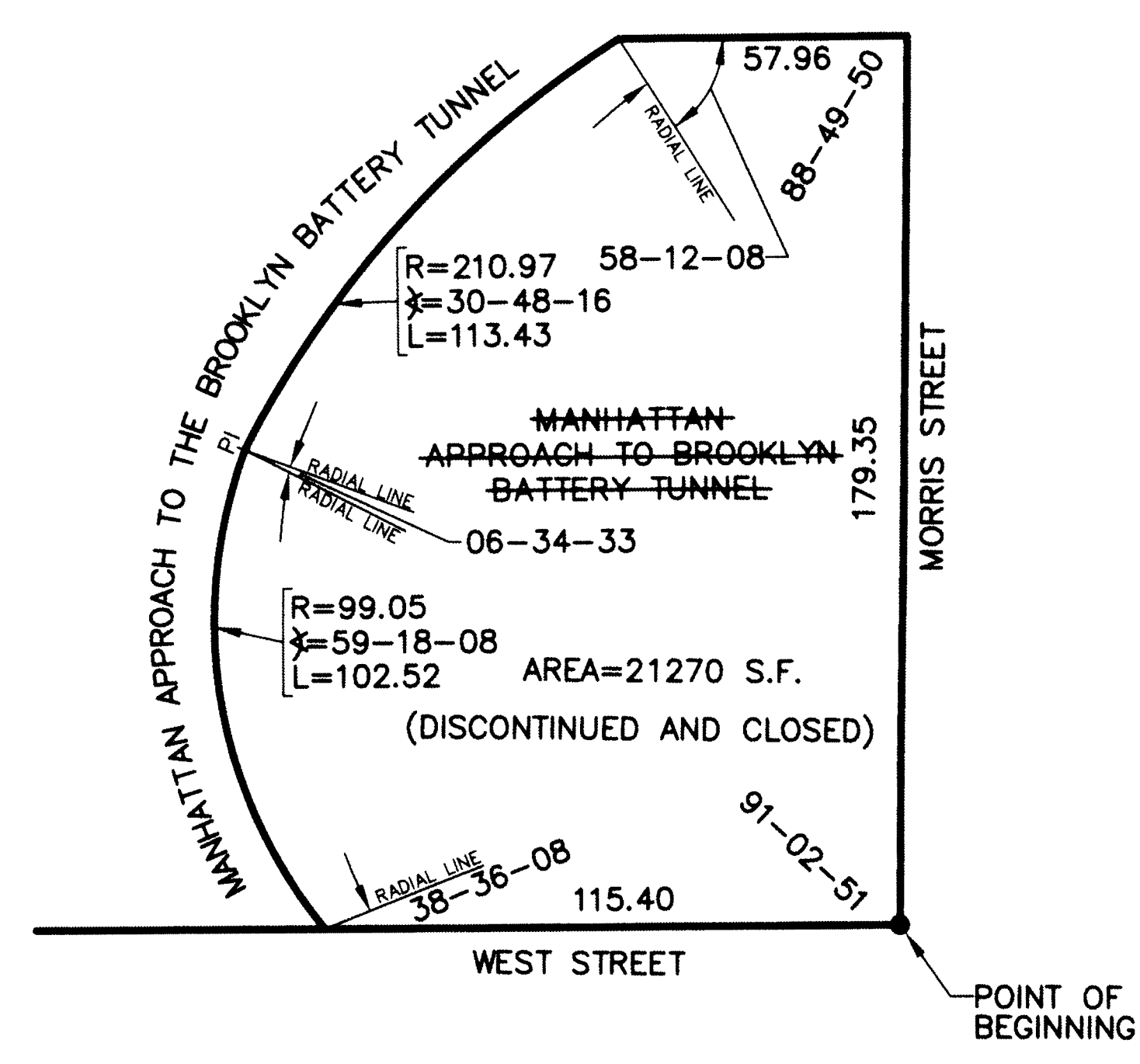
PLAN SHOWING THE DISCONTINUANCE AND CLOSING OF MANHATTAN APPROACH TO THE BROOKLYN BATTERY TUNNEL NOT TO SCALE



PLAN SHOWING THE DISCONTINUANCE AND CLOSING OF JOSEPH P. WARD STREET ABOVE A LOWER LIMITING PLANE OF 37.2' SCALE 1"=30'

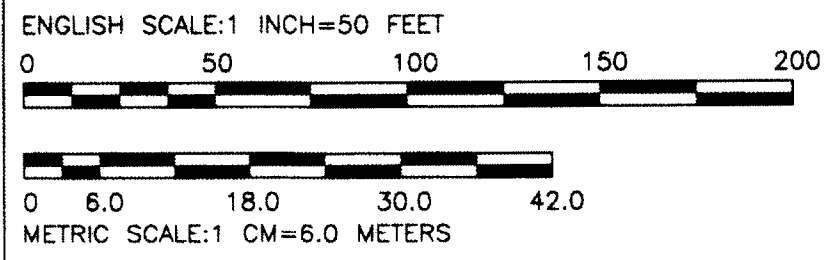


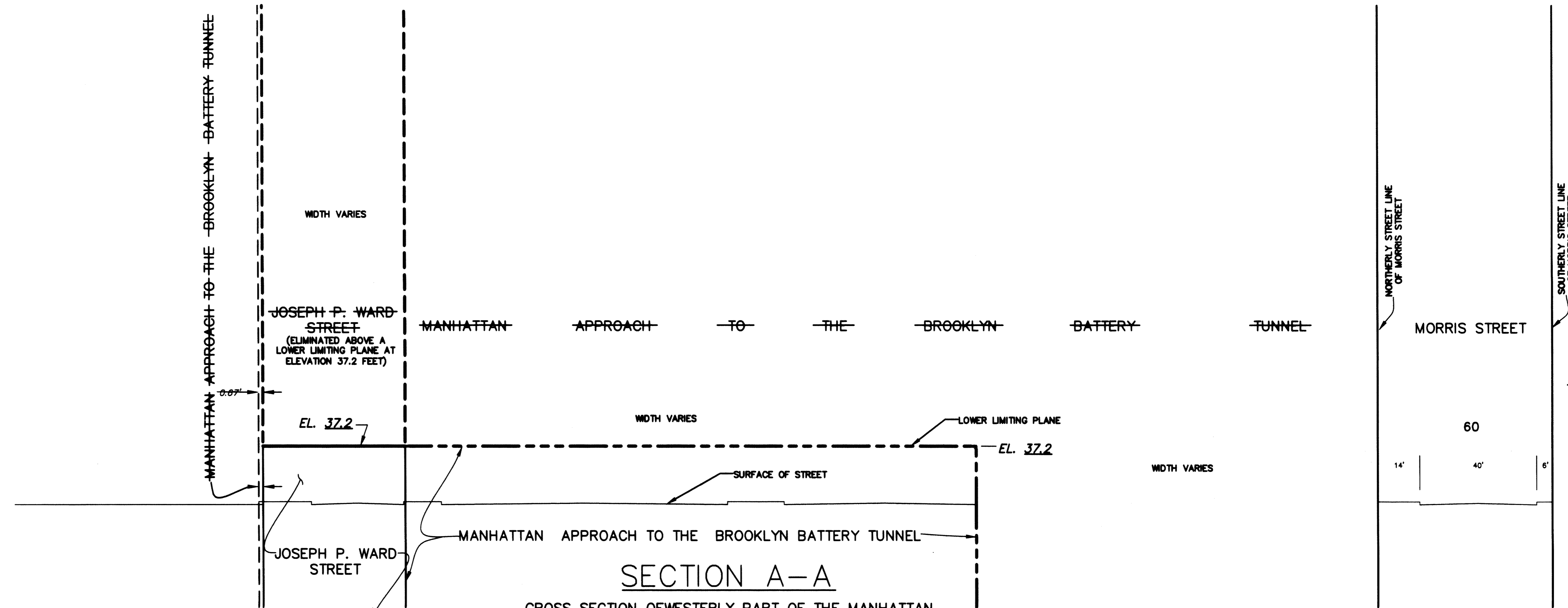
PLAN SHOWING THE DISCONTINUANCE AND CLOSING OF MANHATTAN APPROACH TO THE BROOKLYN BATTERY TUNNEL BELOW ELEVATION 37.2' SCALE 1"=30'



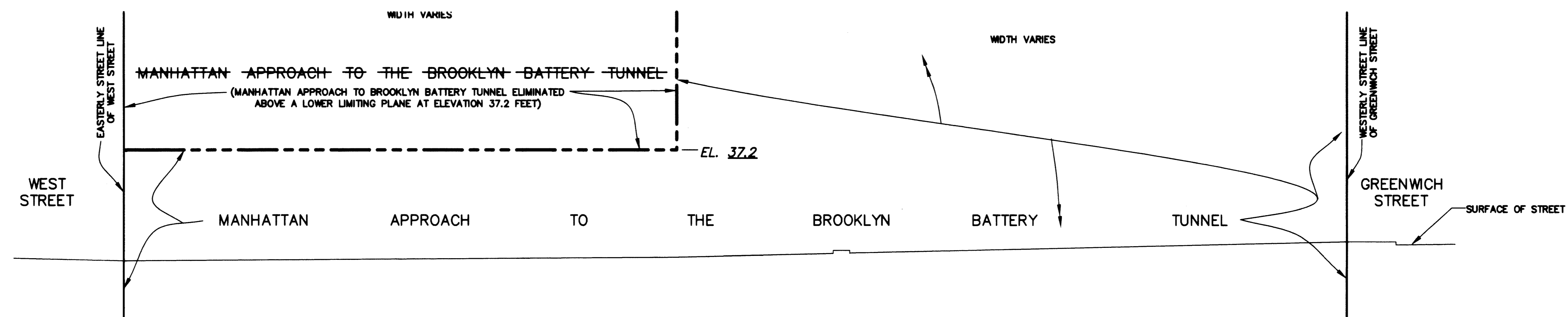
PLAN SHOWING THE DISCONTINUANCE AND CLOSING OF MANHATTAN APPROACH TO THE BROOKLYN BATTERY TUNNEL BELOW ELEVATION 37.2' SCALE 1"=30'

LEGEND:
 [Boxed text: JOSEPH P. WARD STREET (DISCONTINUED AND CLOSED)]
 INDICATES LAND TO BE DISCONTINUED AND CLOSED.

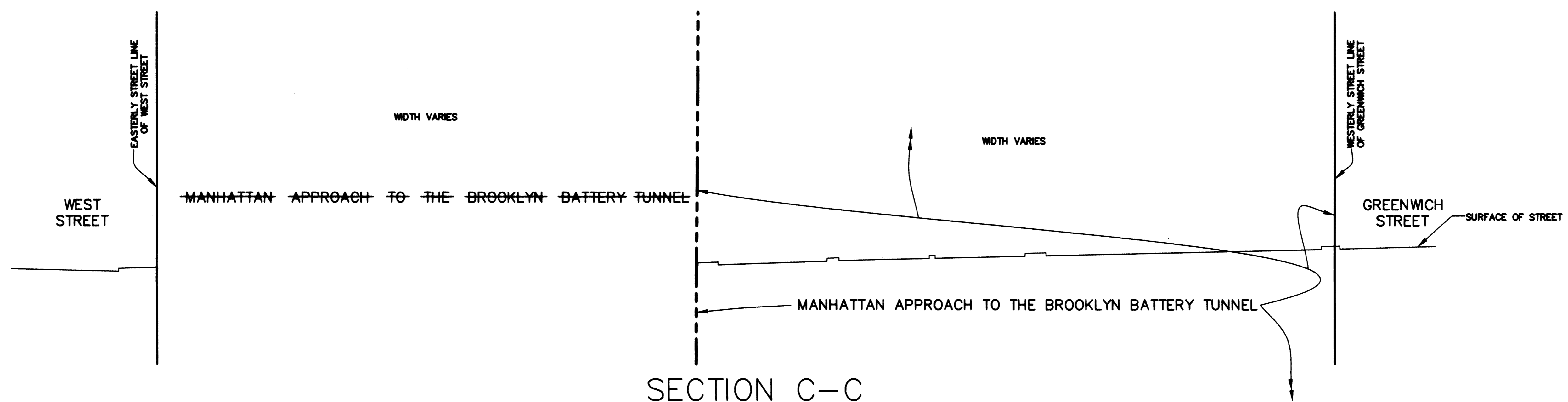




SECTION A-A
 CROSS SECTION OF WESTERLY PART OF THE MANHATTAN
 APPROACH TO THE BROOKLYN BATTERY TUNNEL
 SEE SHEET 1 FOR PLAN
 SCALE 1"=20'



SECTION B-B
 CROSS SECTION OF NORTHERN PART OF THE MANHATTAN
 APPROACH TO THE BROOKLYN BATTERY TUNNEL
 SEE SHEET 1 FOR PLAN
 SCALE 1"=20'



SECTION C-C
 CROSS SECTION OF CENTRAL PART OF THE
 MANHATTAN APPROACH TO THE BROOKLYN BATTERY
 TUNNEL FROM WEST STREET TO GREENWICH STREET
 SEE SHEET 1 FOR PLAN
 SCALE 1"=20'

