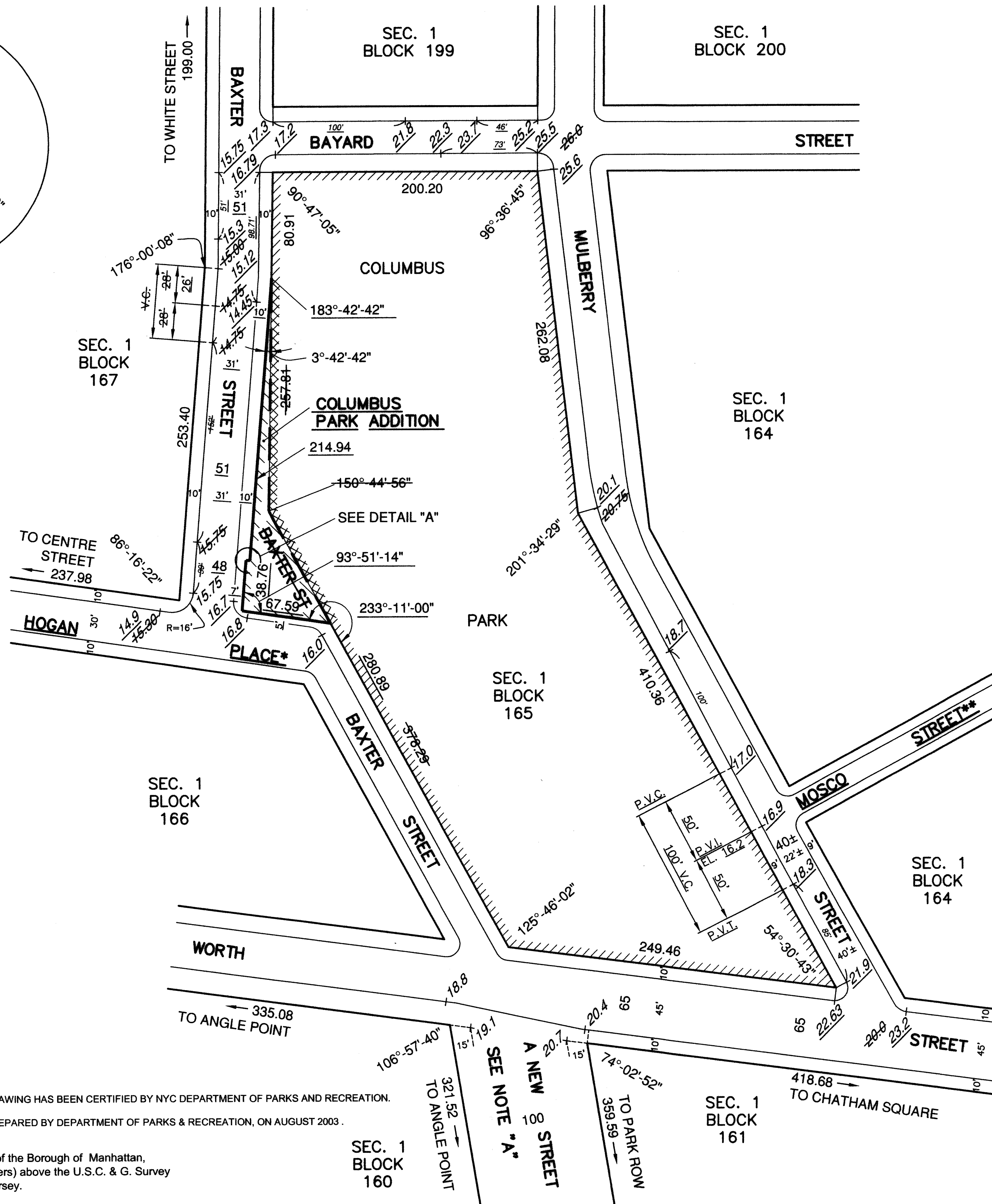


DETAIL A
NOT TO SCALE



NOTES

- Indicates street line heretofore established and hereby retained.
- Indicates street line hereby established.
- Indicates street line heretofore established and hereby eliminated.
- Indicates roadway and sidewalk treatment hereby established or heretofore established and retained.
- 262.08 Indicates dimension heretofore established and hereby retained.
- 280.89 Indicates dimension hereby established.
- ~~257.81~~ Indicates dimension heretofore established and hereby eliminated.
- 18.8 Indicates elevation heretofore established and hereby retained.
- 17.2 Indicates elevation hereby established.
- ~~26.0~~ Indicates elevation heretofore established and hereby eliminated.
- 66' Indicates tie-in distance (to an elevation) heretofore established and hereby eliminated.
- 73' Indicates tie-in dimension (to an elevation) hereby established.
- 45' Indicates roadway and sidewalk treatment dimension heretofore established and retained.
- 31' Indicates roadway and sidewalk treatment dimension hereby established.
- [Hatched Box] PARK Indicates park heretofore established and hereby retained.
- [Hatched Box] PARK OR PARK ADDITION Indicates park or park addition hereby established.
- [Cross-hatched Box] PARK Indicates park line heretofore established and hereby eliminated.
- P.V.T. Indicates point of vertical tangency.
- P.V.I. Indicates point of vertical intersection.
- P.V.C. Indicates point of vertical curvature.

NOTE "A"

"A NEW STREET" IS NOT IN USE FOR STREET PURPOSES. IT WAS ACQUIRED BY THE FEDERAL GOVERNMENT AND DEVELOPED WITH A FEDERAL COURT BUILDING. SEE 90 CIV.7995 UNITED STATES DISTRICT COURT, SOUTHERN DISTRICT OF NEW YORK, FOR THE LIMITS OF "A NEW STREET" ACQUIRED BY CONDEMNATION BY FEDERAL GOVERNMENT ON DECEMBER 13, 1990.

* STREET LAND PREVIOUSLY SHOWN AS LEONARD STREET ON THE CITY MAP BETWEEN BAXTER STREET AND CENTRE STREET WAS NAMED HOGAN PLACE PURSUANT TO LOCAL LAW NO. 69 OF 1980 AND APPROVED BY THE MAYOR ON DECEMBER 1, 1980.

** STREET LAND PREVIOUSLY SHOWN AS PARK STREET ON THE CITY MAP BETWEEN MULBERRY STREET AND MOTT STREET WAS NAMED MOSCO STREET PURSUANT TO LOCAL LAW NO. 19 OF 1982 AND APPROVED BY THE MAYOR ON APRIL 14, 1982.

REFERENCE MAPS

- ACC. NO. 30200 (CP-960195MMM)
- ACC. NO. 29960 (CP-20710)
- ACC. NO. 29852
- ACC. NO. 29847 (CP-17378)
- ACC. NO. 29841 (CP-18684)
- ACC. NO. 29840 (CP-78666)
- ACC. NO. 29514 (CP-13380)
- ACC. NO. 28076
- ACC. NO. 8331
- ACC. NO. 7846
- ACC. NO. 2856

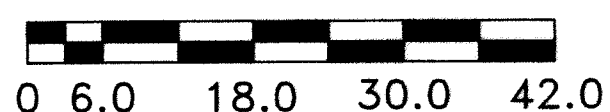
GEOMETRY SHOWN ON THIS DRAWING HAS BEEN CERTIFIED BY NYC DEPARTMENT OF PARKS AND RECREATION. AND IS BASED ON A SURVEY PREPARED BY DEPARTMENT OF PARKS & RECREATION, ON AUGUST 2003.

Elevations refer to the datum of the Borough of Manhattan, which is 2.750 feet (0.838 meters) above the U.S.C. & G. Survey datum at Sandy Hook, New Jersey.

Elevations are taken at top of curb unless shown otherwise.

Sidewalk dimensions shown are theoretically established for grade determination purposes only.

ENGLISH SCALE: 1 INCH=50 FEET



METRIC SCALE: 1 CM=6.0 METERS (19.7 FEET)

APPROVED FOR DEPARTMENT OF PARKS AND RECREATION
Adrian Bonaparte
COMMISSIONER OF PARKS & RECREATION

I, YVETTE V. GRUEL, SECRETARY OF THE CITY PLANNING COMMISSION, DO HEREBY CERTIFY THAT THIS MAP IS ONE OF EIGHT SIMILAR MAPS APPROVED BY THE CITY PLANNING COMMISSION ON THE 6TH DAY OF JUNE, 2007 (CALENDAR NO. 7) AND SUBSEQUENTLY APPROVED BY THE CITY COUNCIL ON _____ (RESOLUTION NO. _____) WHICH ACTION COMPRISED FINAL APPROVAL AND THAT THIS MAP WAS FILED ON THE DATE OF THIS CERTIFICATION AND WILL TAKE EFFECT ON THE FOLLOWING DAY.
DATE: NEW YORK August 24, 2007

Yvette V. Gruel
SECRETARY OF THE CITY PLANNING COMMISSION

CITY OF NEW YORK
OFFICE OF THE PRESIDENT BOROUGH OF MANHATTAN
TOPOGRAPHICAL BUREAU

MAP ACC NO. 30219
SHOWING
THE ELIMINATION, DISCONTINUANCE AND CLOSING
OF A PORTION OF
BAXTER STREET
BETWEEN BAYARD STREET AND HOGAN PLACE;

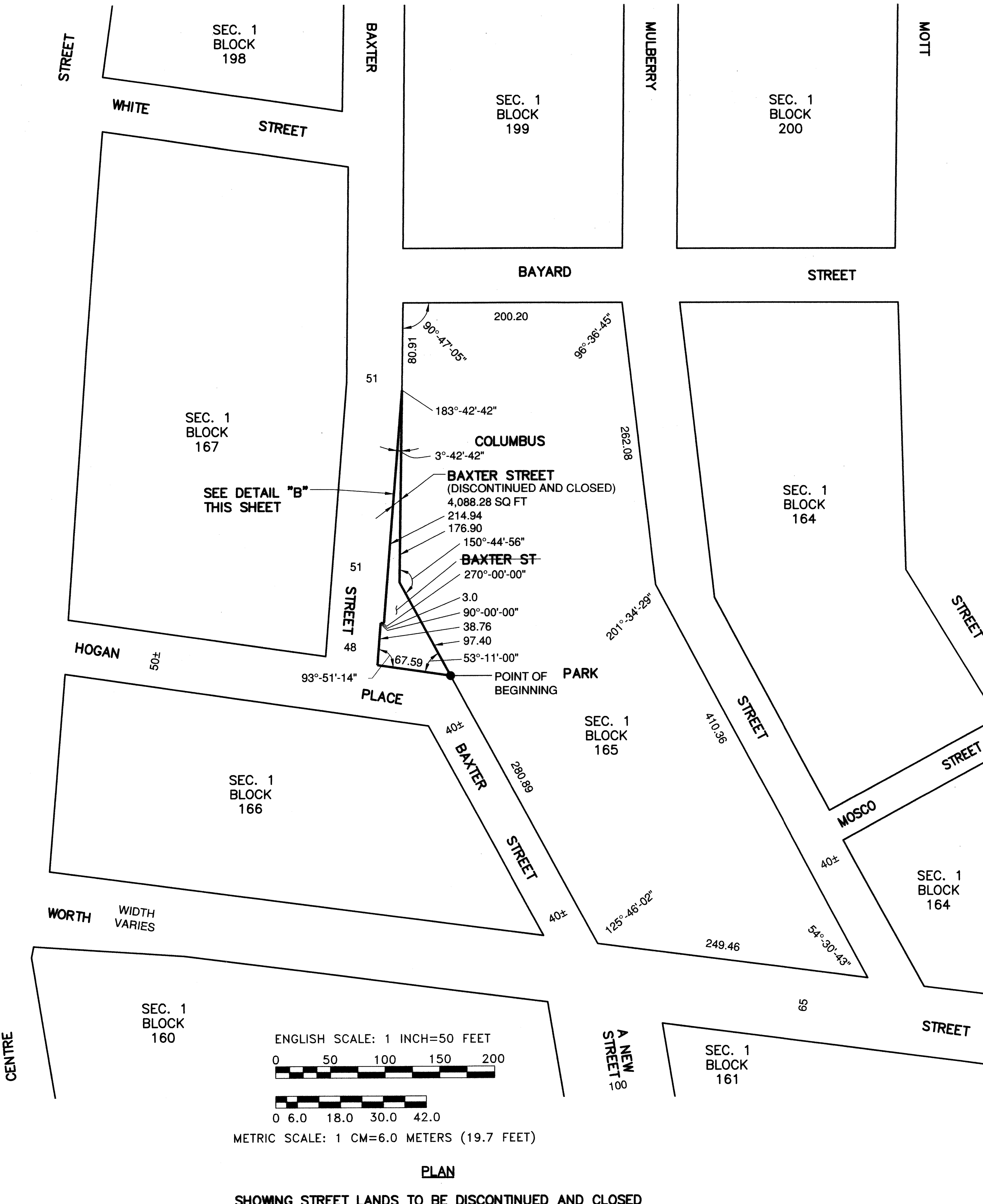
THE ESTABLISHMENT
OF
A PARK ADDITION

AND THE MODIFICATION OF GRADES
BLOCK DIMENSIONS AND ROADWAY TREATMENT
WITHIN AN AREA BOUNDED BY
BAXTER STREET, BAYARD STREET, MULBERRY STREET,
WORTH STREET, AND HOGAN PLACE

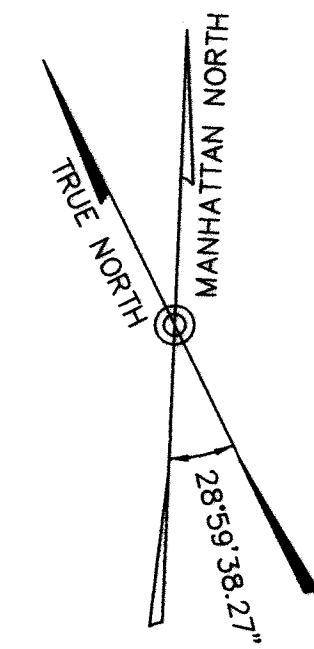
Richard M. King
PRESIDENT, BOROUGH OF MANHATTAN
Anthony J. DeLuca
CONSULTING ENGINEER P.E.

12/15/2006
DATE

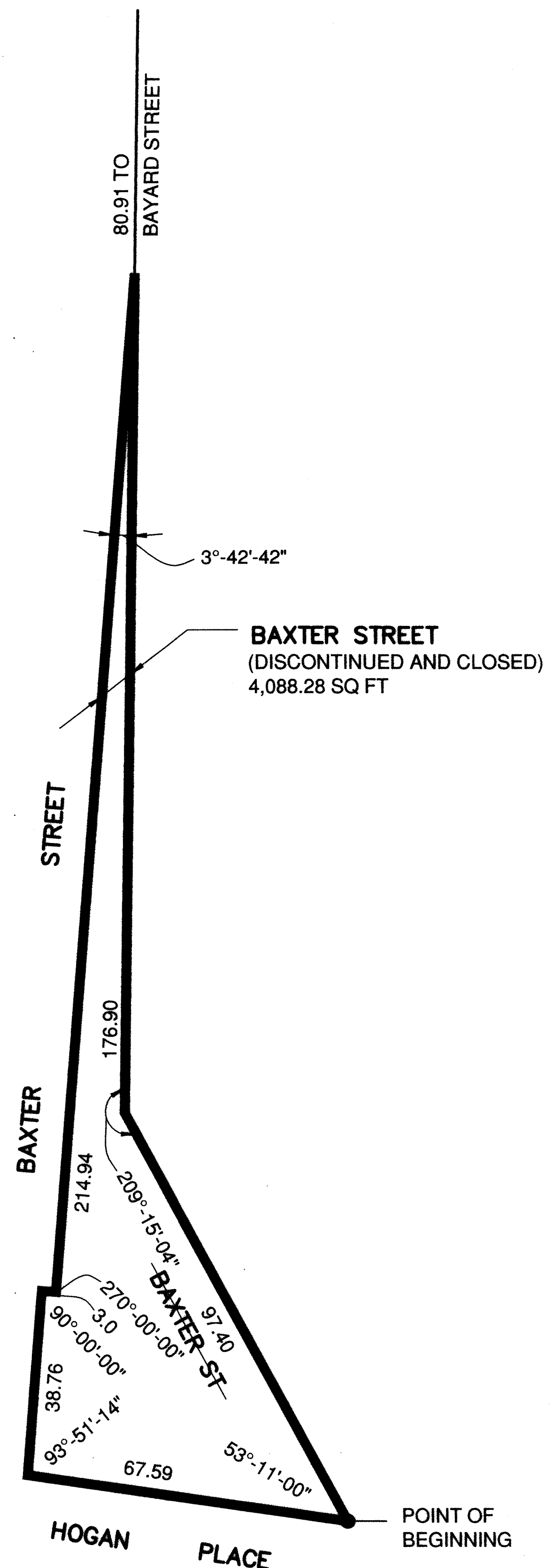
MAP ACC NO. 30219 (CPC. NO. 050436MMM)



PLAN
 SHOWING STREET LANDS TO BE DISCONTINUED AND CLOSED



LEGEND
 (DISCONTINUED AND CLOSED) INDICATES STREET LANDS TO BE DISCONTINUED AND CLOSED.



DETAIL "B"
 SEE PLAN - THIS SHEET
 SCALE 1"=20'-0"