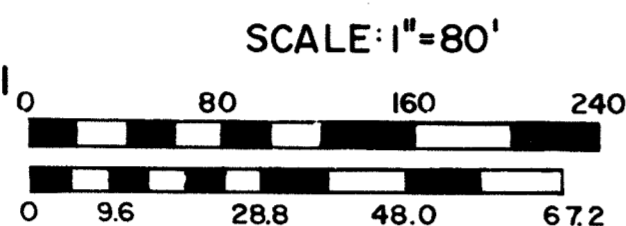


CITY OF NEW YORK  
DEPARTMENT OF CITY PLANNING  
ALTERATION TO THE CITY MAP  
**NO. N920048 MEM**

SHOWING  
THE EXTINGUISHMENT OF  
PEDESTRIAN EASEMENTS  
WITHIN THE AREA BOUNDED BY MURRAY ST.,  
WEST ST., CHAMBERS ST., AND GREENWICH ST.

BOROUGH OF MANHATTAN

DATED: AUGUST 13, 1991  
CORRECTED: APRIL 25, 2001



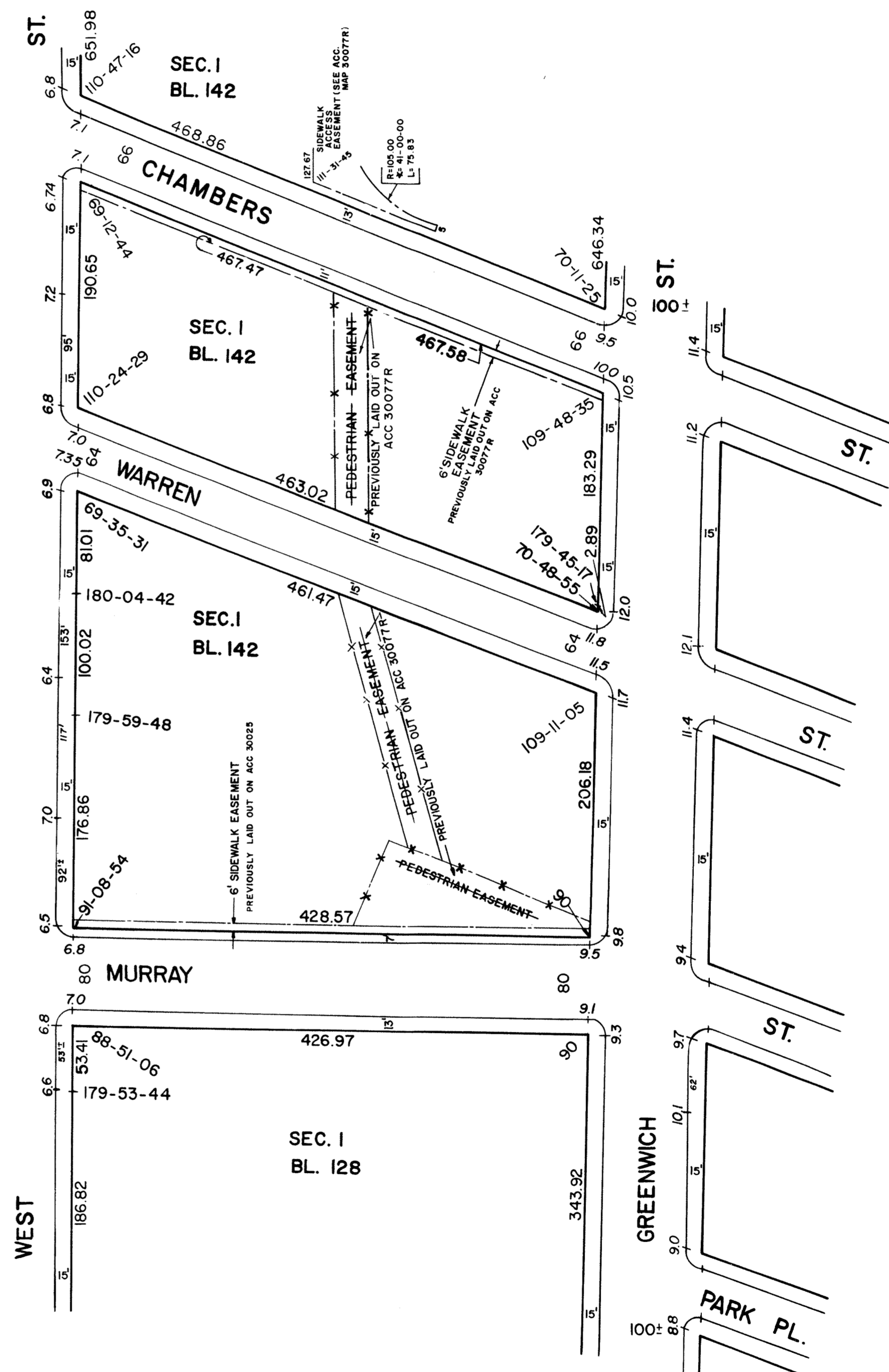
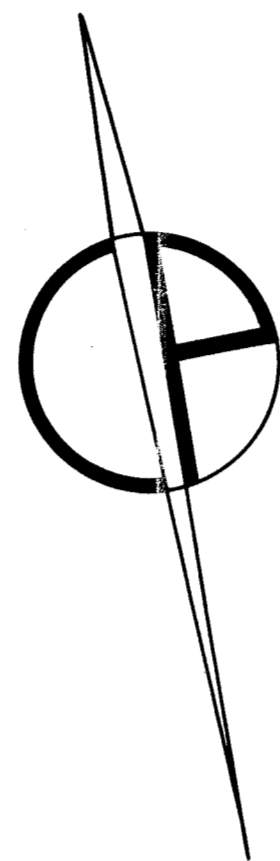
*[Signature]*  
DIRECTOR, DEPARTMENT OF CITY PLANNING

*[Signature]*  
CHIEF ENGINEER P.E.

**NOTE**

- indicates street line heretofore established and hereby retained.
  - 428.57 indicates dimension heretofore established and hereby retained.
  - - - indicates existing sidewalk or pedestrian easement.
  - X-X- indicates delineated pedestrian easement hereby removed.
  - 11.2 indicates elevation heretofore established and hereby retained.
  - 153' indicates tie-in distance to an elevation heretofore established and hereby retained.
  - 15' indicates sidewalk and roadway treatment dimension heretofore established and hereby retained.
- elevations are for top of curb and are referred to the datum of the Topographical Bureau, Borough of Manhattan which is 2.75 feet above the U.S.C.&G. survey datum at Sandy Hook.

NOTE: easements are shown for informational purposes only and are not part of the official city map.



REFERENCE MAPS  
ACC. No. 30077R (D.C.P. 820079 MMM)  
ACC. No. 30035 (C.P. 22603)  
ACC. No. 29995 (C.P. 21417)  
ACC. No. 29985 (C.P. 21126)  
ACC. No. 30025 (C.P. 22146)

D.C.P. No. N920048 MEM

I, YVETTE GRUEL, Secretary of the City Planning Commission, do hereby certify that this map is one of EIGHT similar maps approved by the City Planning Commission on the 28th day of JULY 2004 (Cal. No. 43), and that these maps were filed on the date of this certification, and will become effective on the following day.  
Dated, New York: March 17, 2005

*[Signature]*  
Secretary, City Planning Commission

Drawn by IB  
Checked by IB