

MAP NO. 30213

DELINEATING TWO PERMANENT UNITED STATES NATIONAL PARK SERVICE EASEMENTS

WITHIN
RIVERSIDE PARK
AND EXTENDING INTO
RIVERSIDE DRIVE
BETWEEN
RIVERSIDE DRIVE EAST, HENRY HUDSON PARKWAY
AND THE WESTERLY EXTENSION OF
WEST 122ND STREET

DATE: NEW YORK, January 27, 2004

Virginia C. Fields
VIRGINIA C. FIELDS
PRESIDENT
BOROUGH OF MANHATTAN

Anthony C. Gulotta P. E.
ANTHONY C. GULOTTA
CONSULTING ENGINEER
BOROUGH OF MANHATTAN

Joseph T. Avery
JOSEPH T. AVERY
SUPERINTENDENT OF MANHATTAN SITES
US NATIONAL PARK SERVICE
NORTH EAST REGION

Adrian Benere
ADRIAN BENERE
COMMISSIONER
NYC DEPT. OF PARKS AND RECREATION

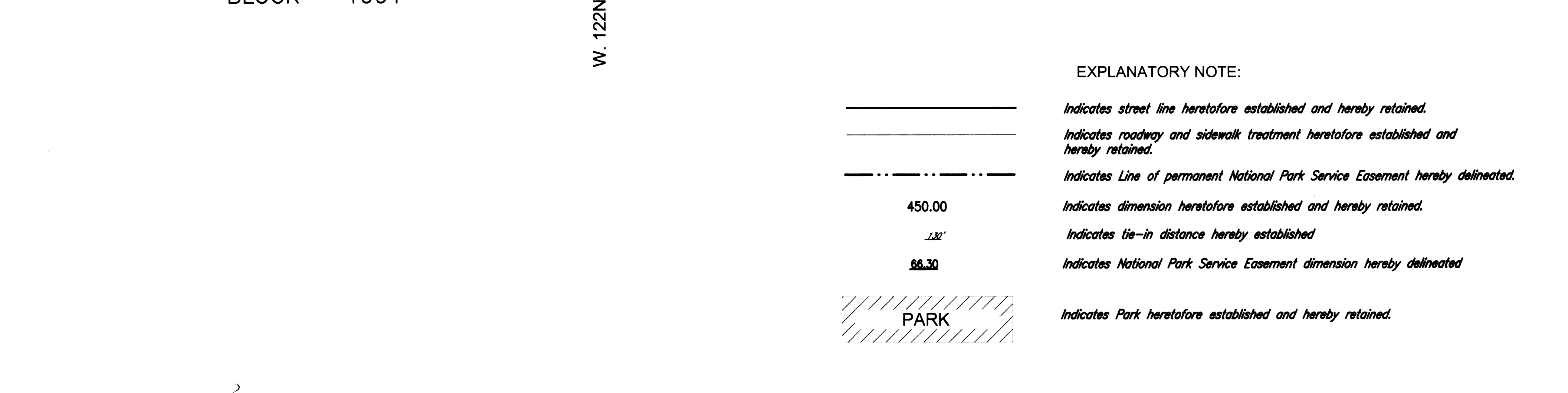
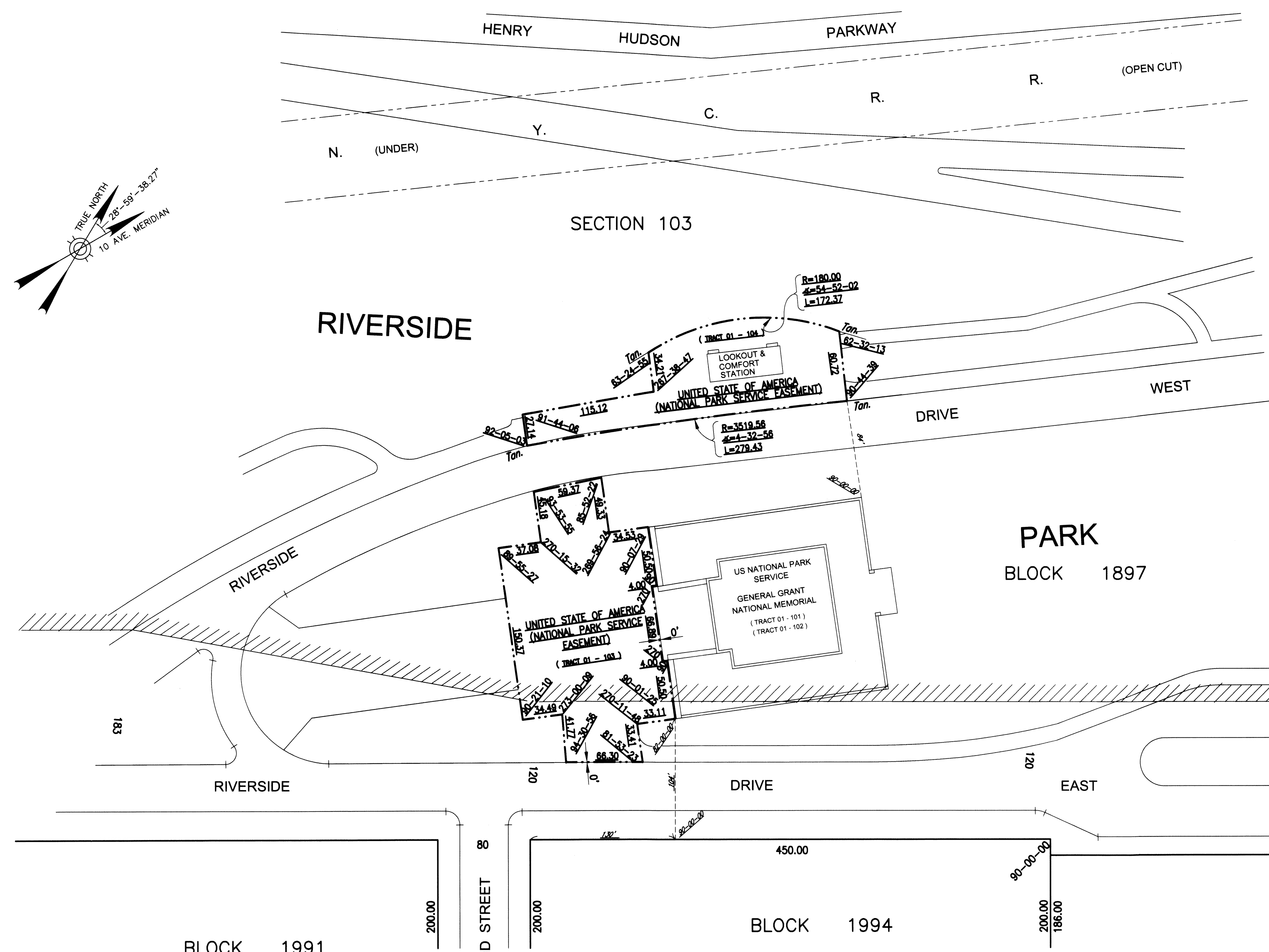
Yvette V. Gruel Secretary of the City Planning Commission, do hereby certify that this map is one of 8 similar maps approved by the City Planning Commission on the 23rd day of June, 2004 (Cal. No. 17), and subsequently approved by the City Council on August 12, 2004 (Resolution No. 547), which action comprised final approval, and that these maps were filed on the date of this certification and will take effect on the following day.

Dated, New York, 9/3/04

Yvette V. Gruel
Secretary, City Planning Commission

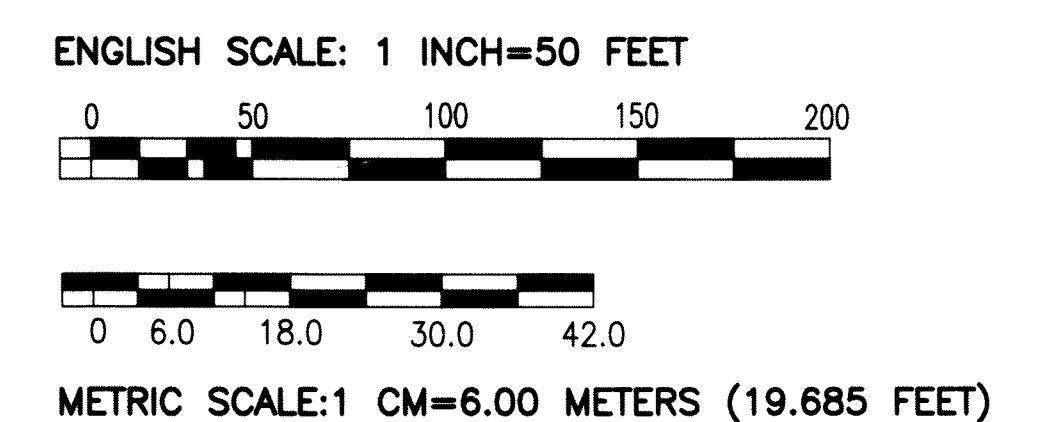
NOTE:

The General Grant National Memorial was transferred into Federal ownership in 1956 and placed under management of the National Park Service in 1959 by Public Law 85 - 659 (72 stat. 614)



- EXPLANATORY NOTE:
- Indicates street line heretofore established and hereby retained.
 - Indicates roadway and sidewalk treatment heretofore established and hereby retained.
 - Indicates Line of permanent National Park Service Easement hereby delineated.
 - 450.00 Indicates dimension heretofore established and hereby retained.
 - 132' Indicates tie-in distance hereby established
 - 86.30 Indicates National Park Service Easement dimension hereby delineated
 - ▨ PARK Indicates Park heretofore established and hereby retained.

REFERENCE MAPS:
200 SCALE BOROUGH MAPS:
ACC. NO. 3543
ACC. NO. 3103



Geometry Certified by
Site - Blauvelt Engineers

Glenn S. Newmark, P.E.

Copyright © 2004
President Borough of Manhattan

CP N0030331MEM; MAP ACC. NO. 30213