

CITY OF NEW YORK
BOROUGH OF MANHATTAN
OFFICE OF THE PRESIDENT
TOPOGRAPHICAL BUREAU

MAP ACC NO. 30212
SHOWING
THE ESTABLISHMENT OF
THE EXTENSION OF
MAIN STREET
ON
ROOSEVELT ISLAND

AND THE ELIMINATION, DISCONTINUANCE AND
CLOSING OF A PORTION OF MAIN STREET
AS PREVIOUSLY ESTABLISHED

BETWEEN THE EASTERLY PROJECTIONS OF
EAST 60th AND EAST 66th STREETS
BOROUGH OF MANHATTAN

DATED March 4, 2004

[Signature]
PRESIDENT - BOROUGH OF MANHATTAN
[Signature] P.E.
CONSULTING ENGINEER

I, Yvette V Gruel, Secretary of the City Planning Commission, do hereby certify that this map is one of eight similar maps approved by the City Planning Commission on the 11th day of August, 2004 (Calendar No. 26)

which action comprised final approval and that these maps were filed on the date of this certification and will take effect on the following day.

Dated: New York 11/23/04

[Signature]
Secretary, City Planning Commission

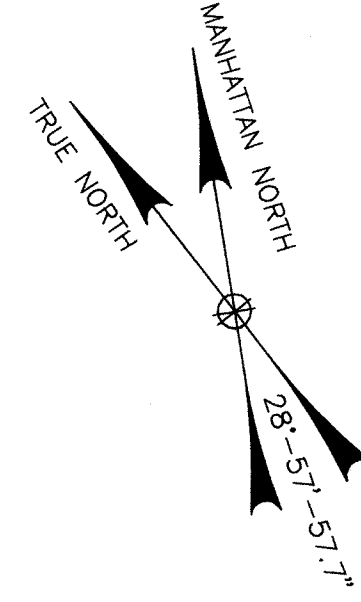
LEGEND

- Indicates street line heretofore established and hereby retained.
- - - Indicates street line heretofore established and hereby eliminated.
- Indicates street line hereby established.
- - - Indicates sidewalk and roadway treatment line hereby established or heretofore established and hereby retained.
- 306.10 Indicates dimension heretofore established and hereby retained.
- 91.85 Indicates dimension hereby established.
- 131.34 Indicates dimension heretofore established and hereby eliminated.
- 28.55 Indicates elevation heretofore established and hereby retained.
- 24.65 Indicates elevation hereby established.
- 23.85 Indicates elevation heretofore established and hereby eliminated.
- 30' Indicates sidewalk and roadway treatment dimension hereby established.
- 26' Indicates sidewalk and roadway treatment dimension heretofore established and hereby retained.
- 429.64' Indicates tie-in distance hereby established.
- 115.14' Indicates tie-in distance heretofore established and hereby retained.
- 16.28' Indicates tie-in distance heretofore established and hereby eliminated.
- - - Service Road (For Informational Purposes Only)
- - - U.S. Pierhead and Bulkhead Line

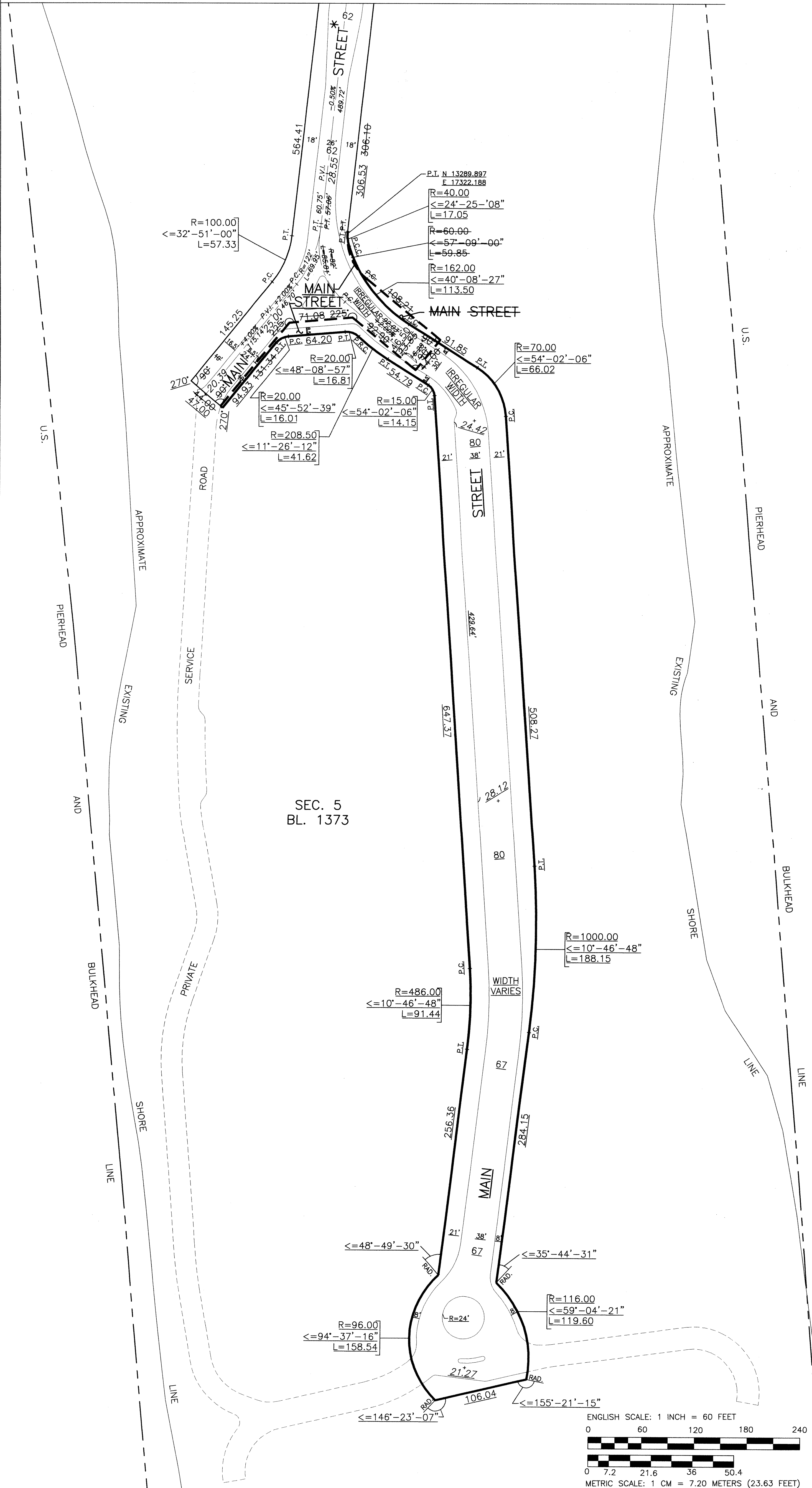
REFERENCE MAPS
ACC. NO. 30015 (CP-22035)

NOTE:
THE COORDINATES SHOWN ARE BASED ON A LOCAL COORDINATE SYSTEM, WHICH REFERENCES TRUE NORTH, AS ESTABLISHED BY KING & GAVARIS, AS SHOWN ON 1971 GIBBS & HILL PLANS FOR NYSUDC WELFARE ISLAND DEVELOPMENT CORP., RELATING TO THE U.S. ARMY ENGINEERS (DRAWING NO. S.D. 276) WITH THE FOLLOWING TRANSLATION:

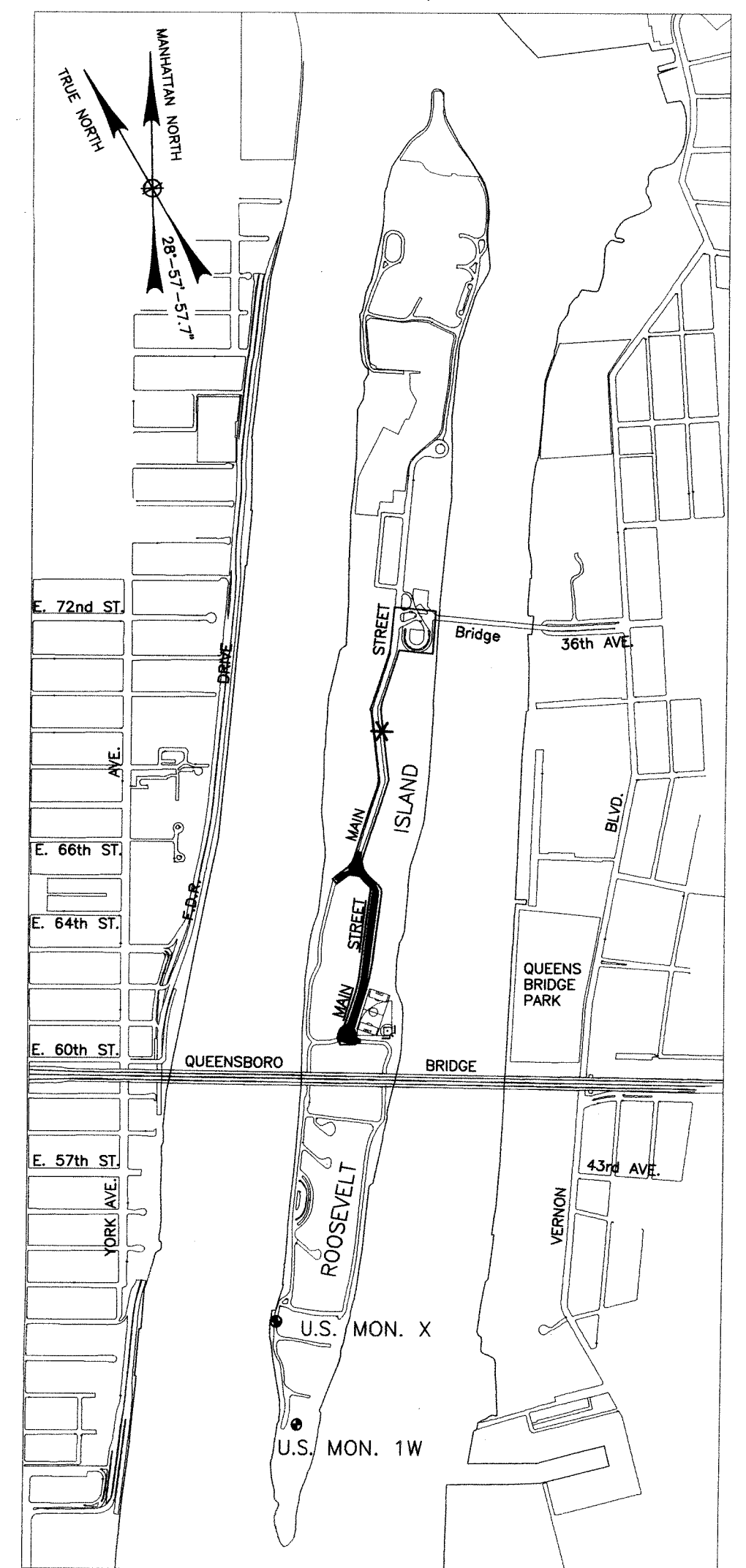
U.S. COORDINATES		K&G COORDINATES	
U.S. MON. 1W	S 11,393.254	N	10,000.000
	W 842.168	E	15,000.000
U.S. MON. X	S 10,673.320	N	10,719.934
	W 637.710	E	15,204.458



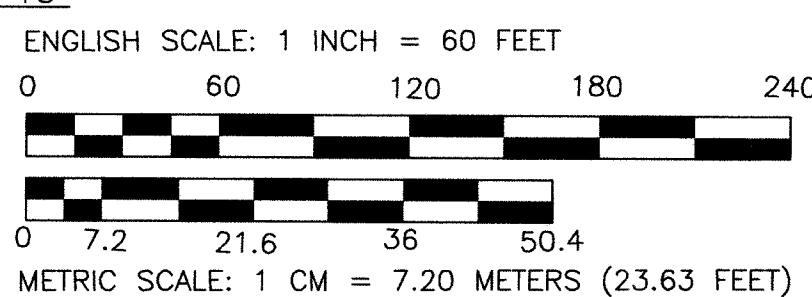
MATCH LINE SEE SHEET 2



* NOTE:
STREET LANDS PREVIOUSLY SHOWN AS "A NEW STREET" ON THE CITY MAP WERE NAMED "MAIN STREET" PURSUANT TO LOCAL LAW No. 29 OF 1988, AND APPROVED BY THE MAYOR ON MAY 27, 1988.



LOCATION MAP (N.T.S.)

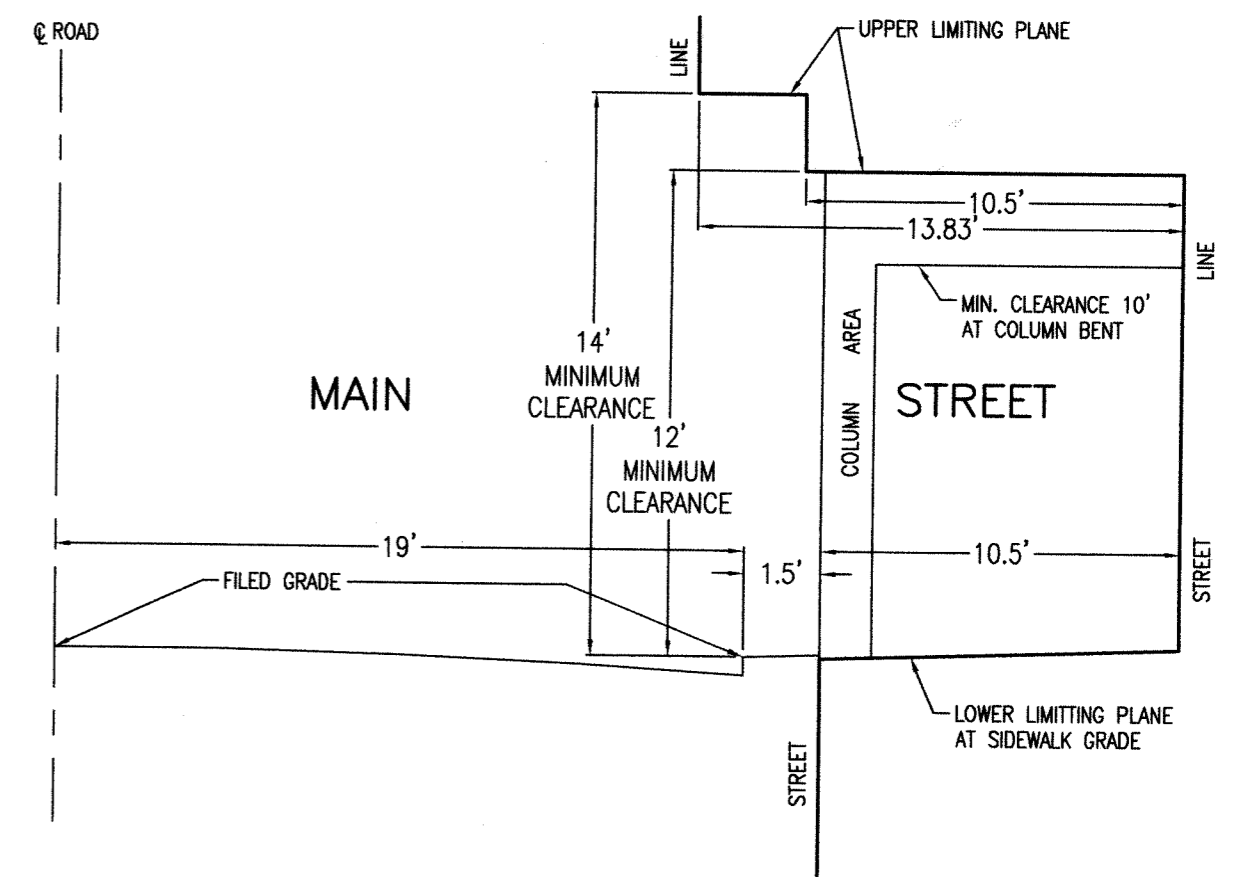


GEOMETRY CERTIFIED BY:
PHILIP HABIB & ASSOC.
226 WEST 26TH STREET
NEW YORK, NEW YORK 10001

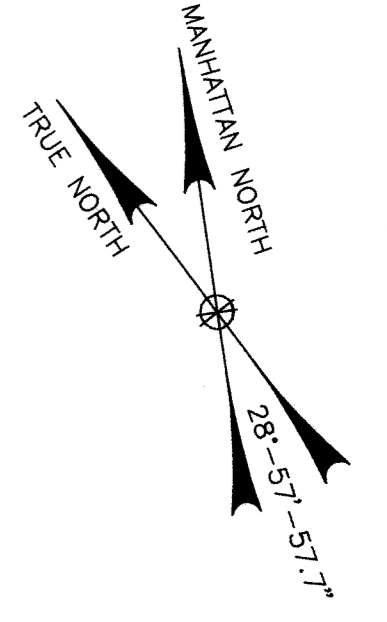
Drawer 42

A.C.C. No. 30212

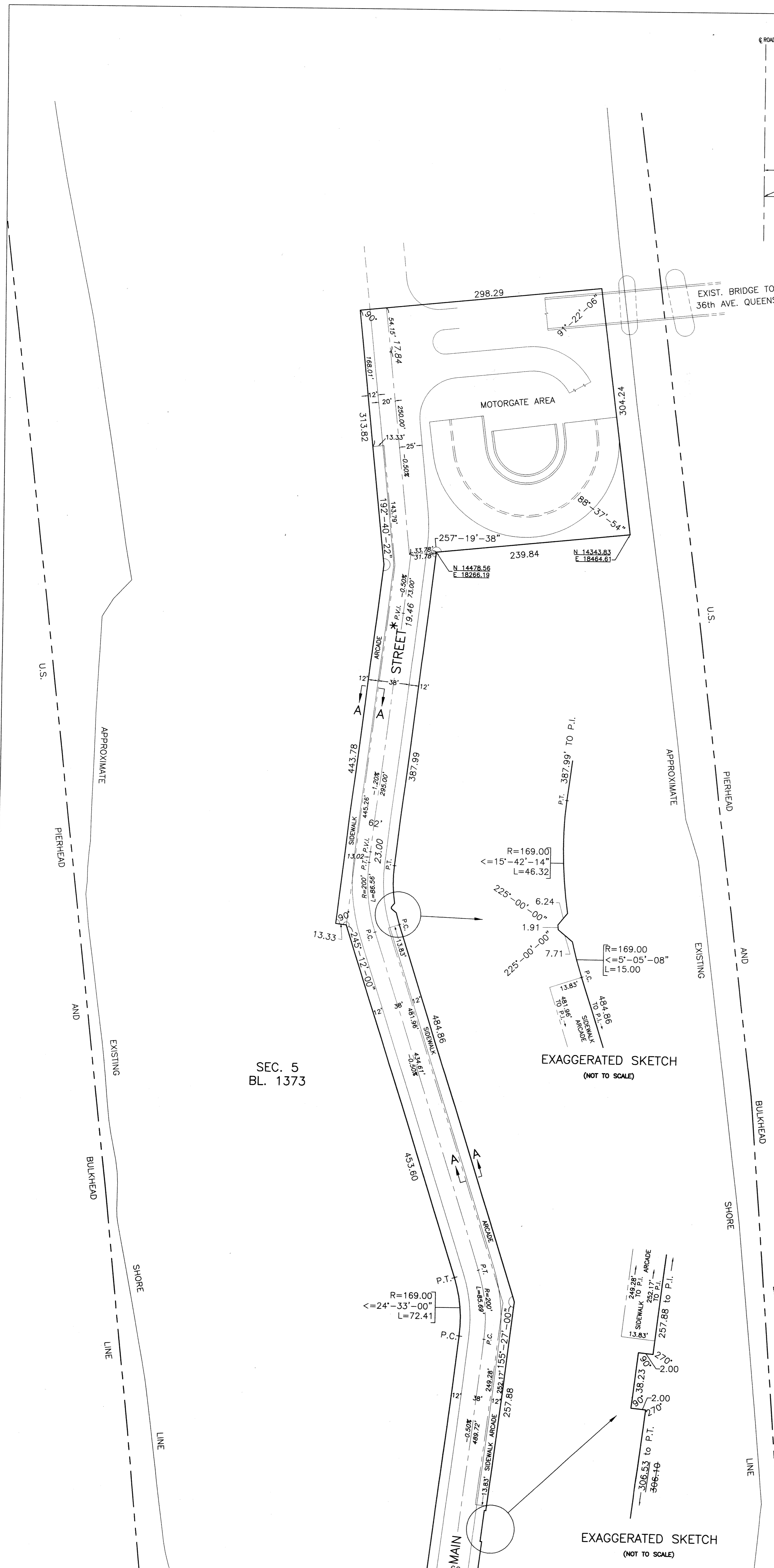
A.C.C. No. 30212 C.P.C. No. 030284 MMM



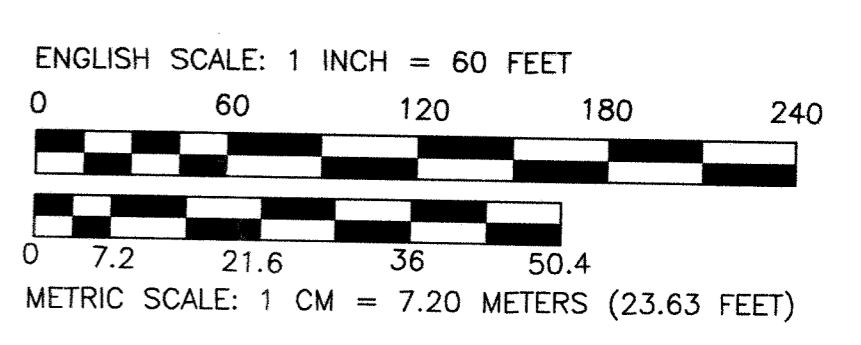
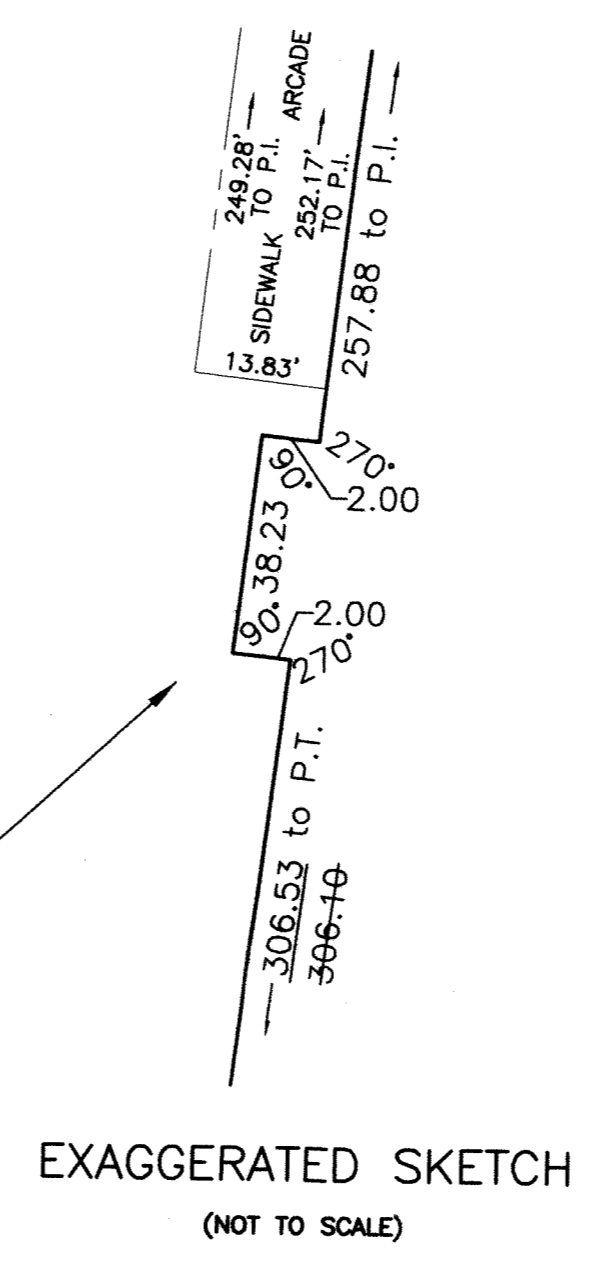
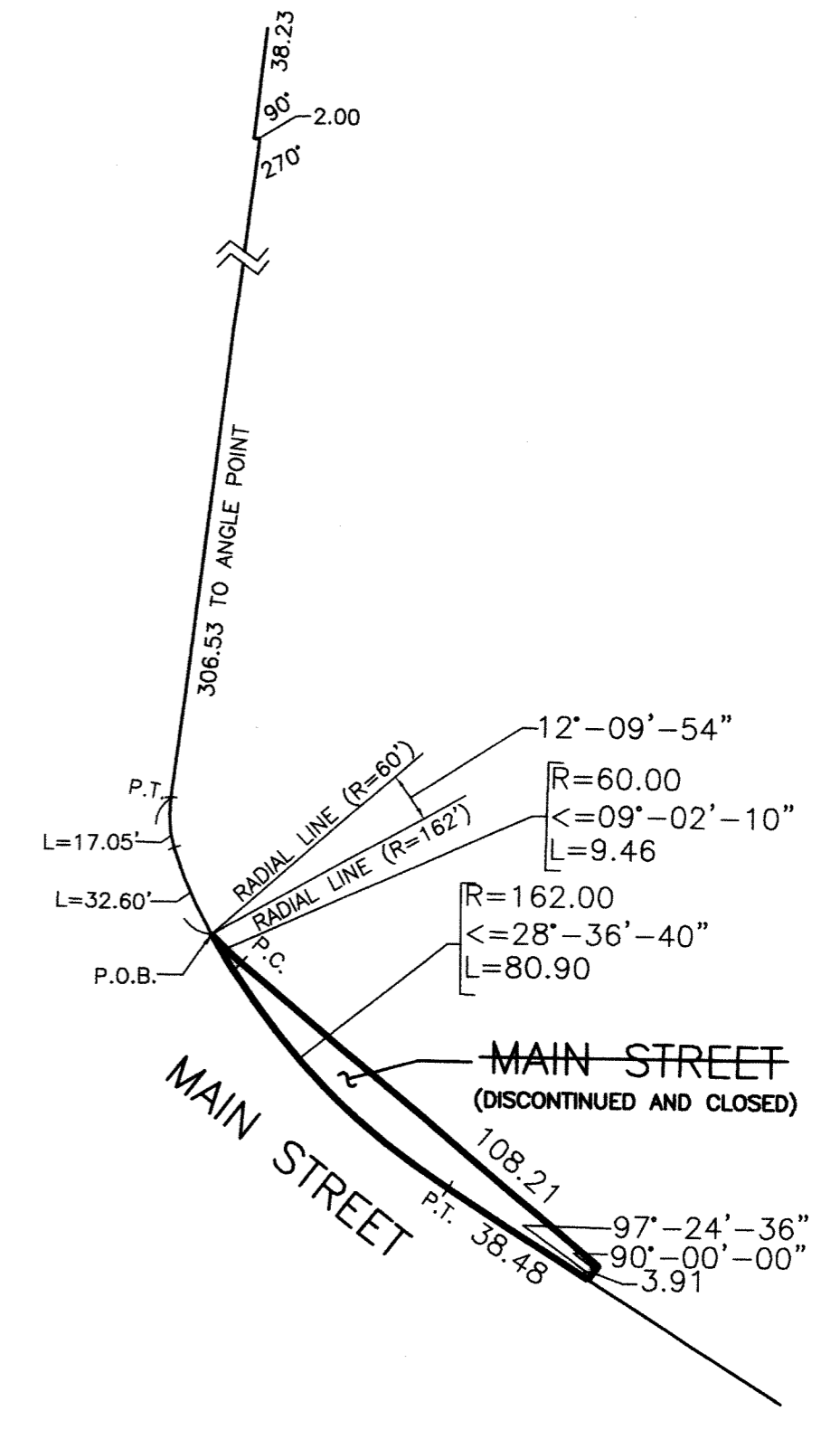
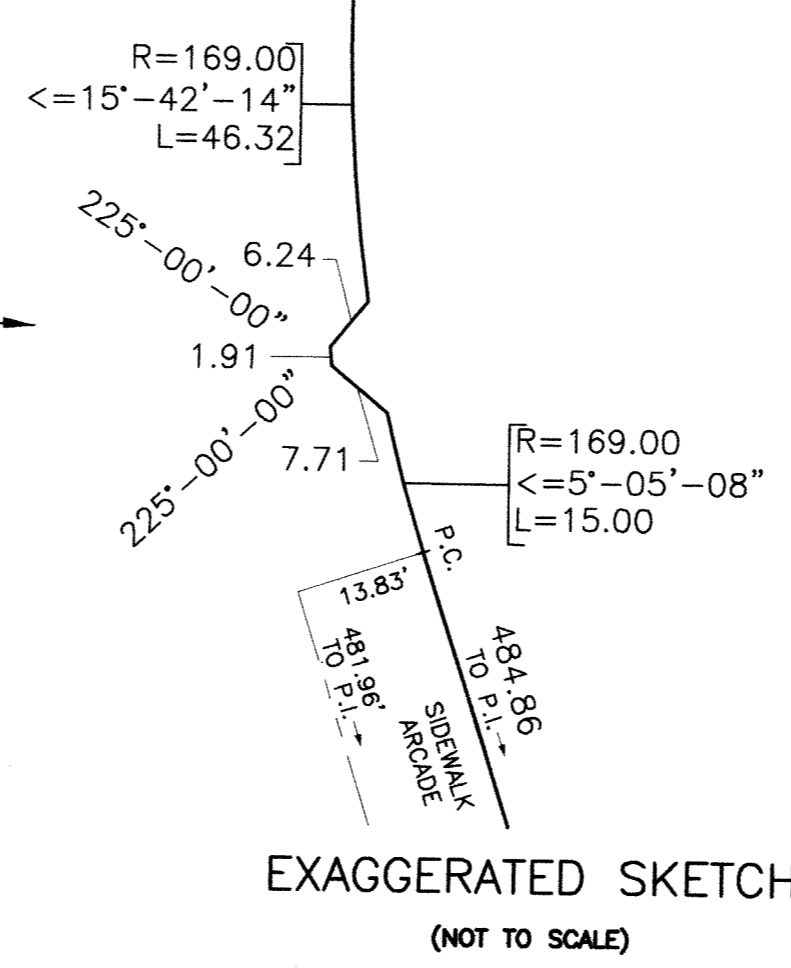
TYPICAL SECTION A-A
N.T.S.



*NOTE:
STREET LANDS PREVIOUSLY SHOWN AS "A NEW STREET" ON THE CITY MAP WERE NAMED "MAIN STREET" PURSUANT TO LOCAL LAW No. 23 OF 1988, AND APPROVED BY THE MAYOR ON MAY 27, 1988.



SEC. 5
BL. 1373



MATCH LINE SEE SHEET 1

Drawer 42