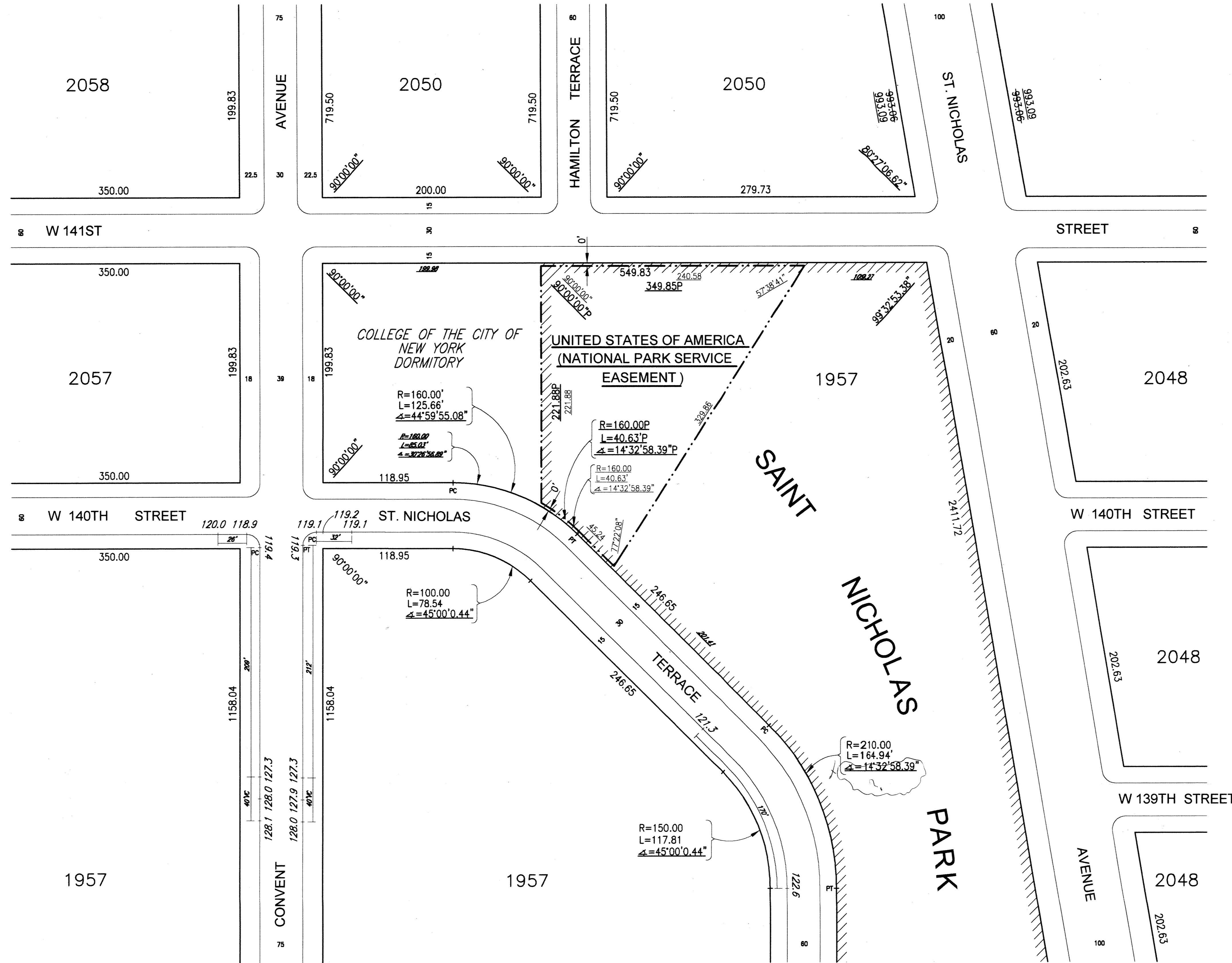
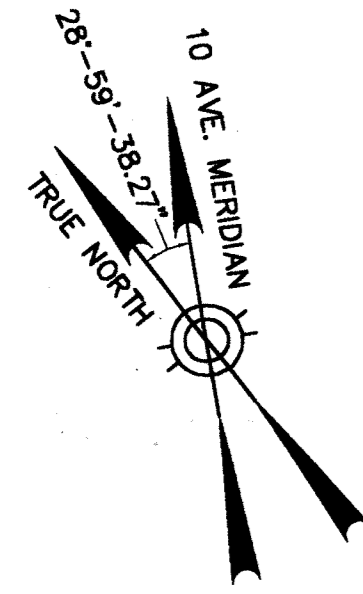


REFERENCE MAPS  
SECTIONAL MAP NO.118  
BOROUGH OF MANHATTAN  
CP 9206, CP 20479  
MAP ACC. NO. 7928



DATE: NEW YORK, APRIL 9<sup>TH</sup>, 2001

*C. Virginia Fields*  
C. VIRGINIA FIELDS  
RESIDENT  
BOROUGH OF MANHATTAN

*Eric Cardwell*  
ERIC CARDWELL, P.E.  
CONSULTING ENGINEER  
BOROUGH OF MANHATTAN

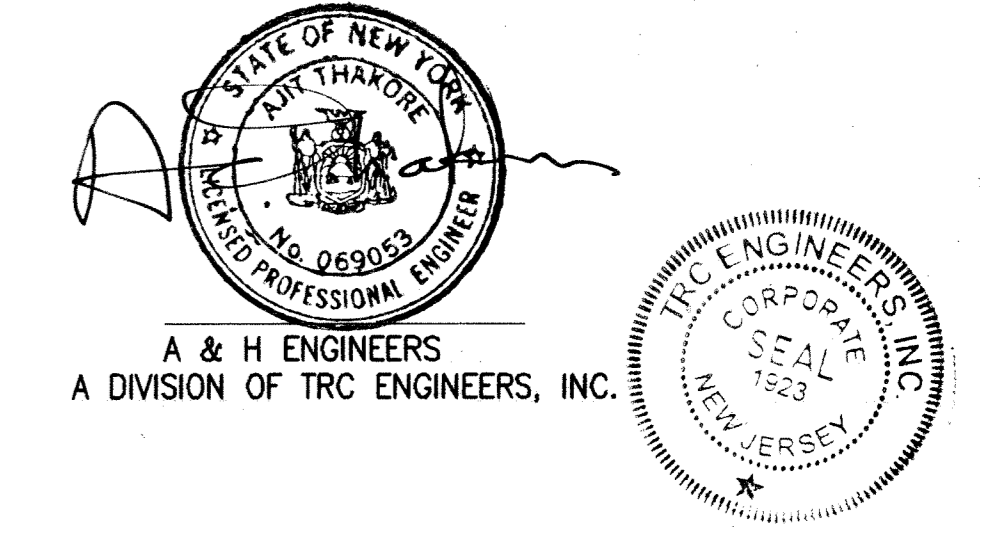
*Joseph T. Avery*  
JOSEPH T. AVERY  
SUPERINTENDENT OF MANHATTAN SITES  
US NATIONAL PARK SERVICE  
NORTH EAST REGION

*Henry J. Stern*  
HENRY J. STERN  
COMMISSIONER  
NYC DEPT. OF PARKS AND RECREATION

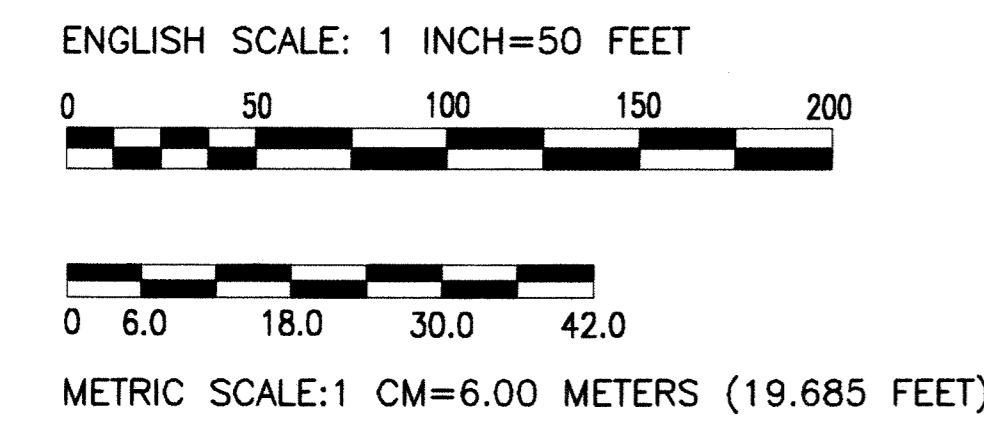
I, Rosa R. Romero, Secretary of the City Planning Commission, do hereby certify that this map is one of eight similar maps approved by the City Planning Commission on the 10<sup>th</sup> day of October, 2001 (Cal. No. 31), which action comprised final approval and that these maps were filed on the date of this certification and will take effect on the following day.

Dated, New York, April 19, 2002

*Rosa R. Romero*  
Secretary, City Planning Commission



- EXPLANATORY NOTE:
- Indicates street line heretofore established and hereby retained.
  - Indicates roadway and sidewalk treatment heretofore established and hereby retained.
  - Indicates dimension heretofore established and hereby retained.
  - Indicates legal grade elevation heretofore established and hereby retained.
  - Indicates roadway and sidewalk treatment dimension heretofore established and retained.
  - Indicates National Park Service easement dimension hereby established.
  - Indicates tie-in distances hereby established.
  - Indicates permanent National Park Service easement hereby established.
  - Indicates Park heretofore established and hereby retained.



CITY OF NEW YORK  
OFFICE OF THE BOROUGH PRESIDENT OF MANHATTAN  
TOPOGRAPHICAL BUREAU

**MAP ACC. NO. 30210**

DELINEATING  
**UNITED STATES OF AMERICA  
(NATIONAL PARK SERVICE EASEMENT)**

WITHIN  
**ST. NICHOLAS PARK**  
BETWEEN  
**ST. NICHOLAS TERRACE AND  
WEST 141ST STREET**

Elevations are for top of curb and are referred to the datum of the Topographical Bureau, Borough of Manhattan, which is 2.75 feet above the U.S.C. & G.S. datum at Sandy Hook N.J.

C 010061MEM MAP ACC. NO. 30210