

# MAP ACC. NO. 30207

SHOWING  
THE ELIMINATION, DISCONTINUANCE AND CLOSING

OF A PORTION OF  
WADSWORTH AVENUE  
BETWEEN  
WEST 173RD STREET  
AND  
WEST 174TH STREET

AND  
THE ELIMINATION  
OF  
A PUBLIC PARK  
AND

THE ADJUSTMENT OF GRADES NECESSITATED THEREBY

DATE: *November 29, 1999*

*William Fields*  
PRESIDENT, BOROUGH OF MANHATTAN

*Arthur Chalko P.E.*  
CONSULTING ENGINEER

EXPLANATORY NOTES :

- INDICATES STREET LINE HERETOFORE ESTABLISHED AND HEREBY RETAINED.
- INDICATES STREET LINE HEREBY ESTABLISHED.
- INDICATES STREET LINE HERETOFORE ESTABLISHED AND HEREBY ELIMINATED.
- 66.65 INDICATES DIMENSION HERETOFORE ESTABLISHED AND HEREBY ELIMINATED.
- 135.84 INDICATES DIMENSION HEREBY ESTABLISHED.
- 200.00 INDICATES DIMENSION HERETOFORE ESTABLISHED AND HEREBY RETAINED.
- 204.8 INDICATES ELEVATION HERETOFORE ESTABLISHED AND HEREBY RETAINED.
- 206.7 INDICATES ELEVATION HEREBY ESTABLISHED.
- 33' INDICATES TIE-IN DISTANCE HERETOFORE ESTABLISHED AND HEREBY RETAINED.
- 51' INDICATES TIE-IN DISTANCE HEREBY ESTABLISHED.
- 15' INDICATES ROADWAY AND SIDEWALK TREATMENT DIMENSION HERETOFORE ESTABLISHED AND HEREBY RETAINED.
- 15' INDICATES ROADWAY AND SIDEWALK TREATMENT DIMENSION HEREBY ESTABLISHED.
- INDICATES DISCONTINUED AND CLOSED STREET OR PORTION THEREOF
- INDICATES PARK HERETOFORE ESTABLISHED AND HEREBY ELIMINATED

ELEVATIONS ARE FOR TOP OF CURB AND REFER TO THE BOROUGH OF MANHATTAN TOPOGRAPHICAL BUREAU DATUM WHICH IS 2.75 FEET ABOVE MEAN SEA LEVEL DATUM, AT SANDY HOOK, NEW JERSEY.

I, ROSA R. ROMERO, SECRETARY OF THE CITY PLANNING COMMISSION, DO HEREBY CERTIFY THAT THIS MAP IS ONE OF EIGHT SIMILAR MAPS APPROVED BY THE CITY PLANNING COMMISSION ON THE 14th DAY OF JUNE, 2000 (CALENDAR NO. 17), AND SUBSEQUENTLY APPROVED BY THE CITY COUNCIL ON JULY 27, 2000 (RES. NO. 1485) WHICH ACTION COMPRISED FINAL ACTION AND THAT THIS MAP WAS FILED ON THE DATE OF THIS CERTIFICATION AND WILL TAKE EFFECT ON THE FOLLOWING DAY.

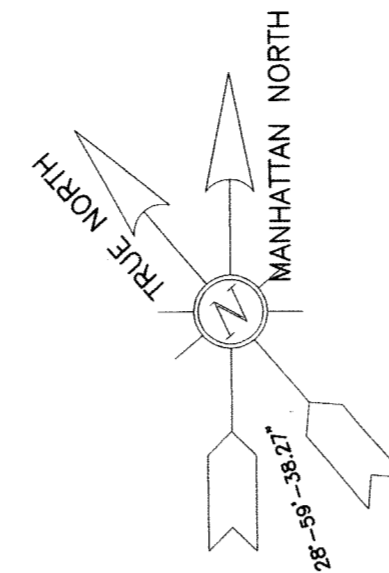
DATE: NEW YORK March 4, 2003

*Rosa R. Romero*  
SECRETARY, CITY PLANNING COMMISSION

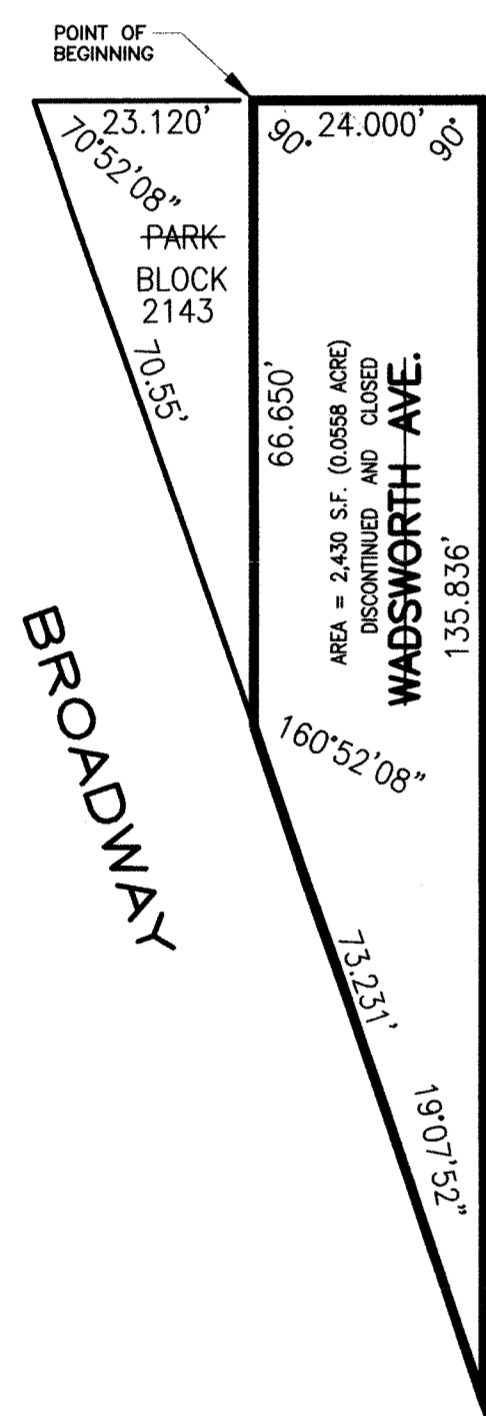
MAP ACC. NO. 30207/CPC 990169 MMM

REFERENCE MAPS:

- MAP ACC. NO. 6027 - DATED DECEMBER 24, 1897
- MAP ACC. NO. 20292 - DATED FEBRUARY 18, 1913
- MAP ACC. NO. 2621 - DATED MAY 25, 1869
- MAP ACC. NO. 4007 - DATED DECEMBER 10, 1886



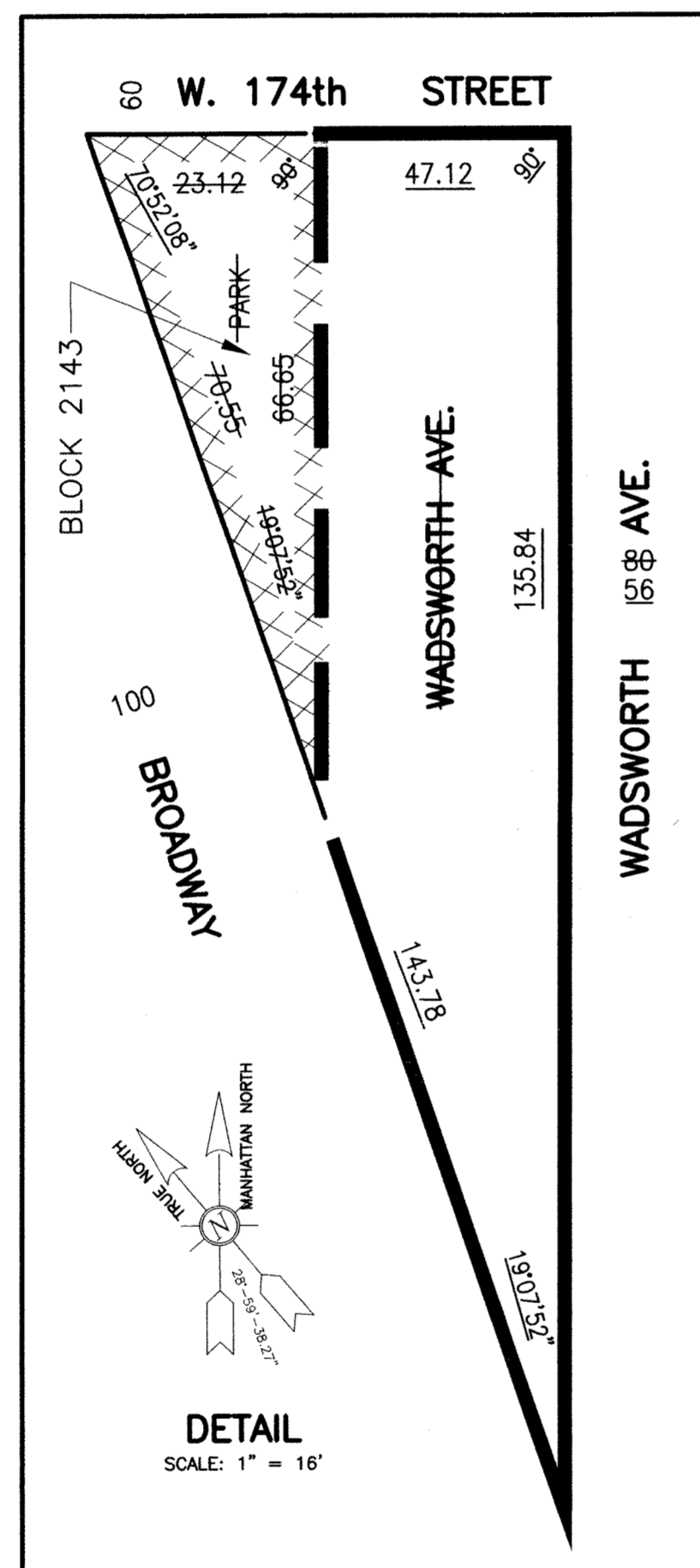
W. 174th STREET



W. 173rd STREET

SCALE: 1" = 20'

DISCONTINUING AND CLOSING MAP



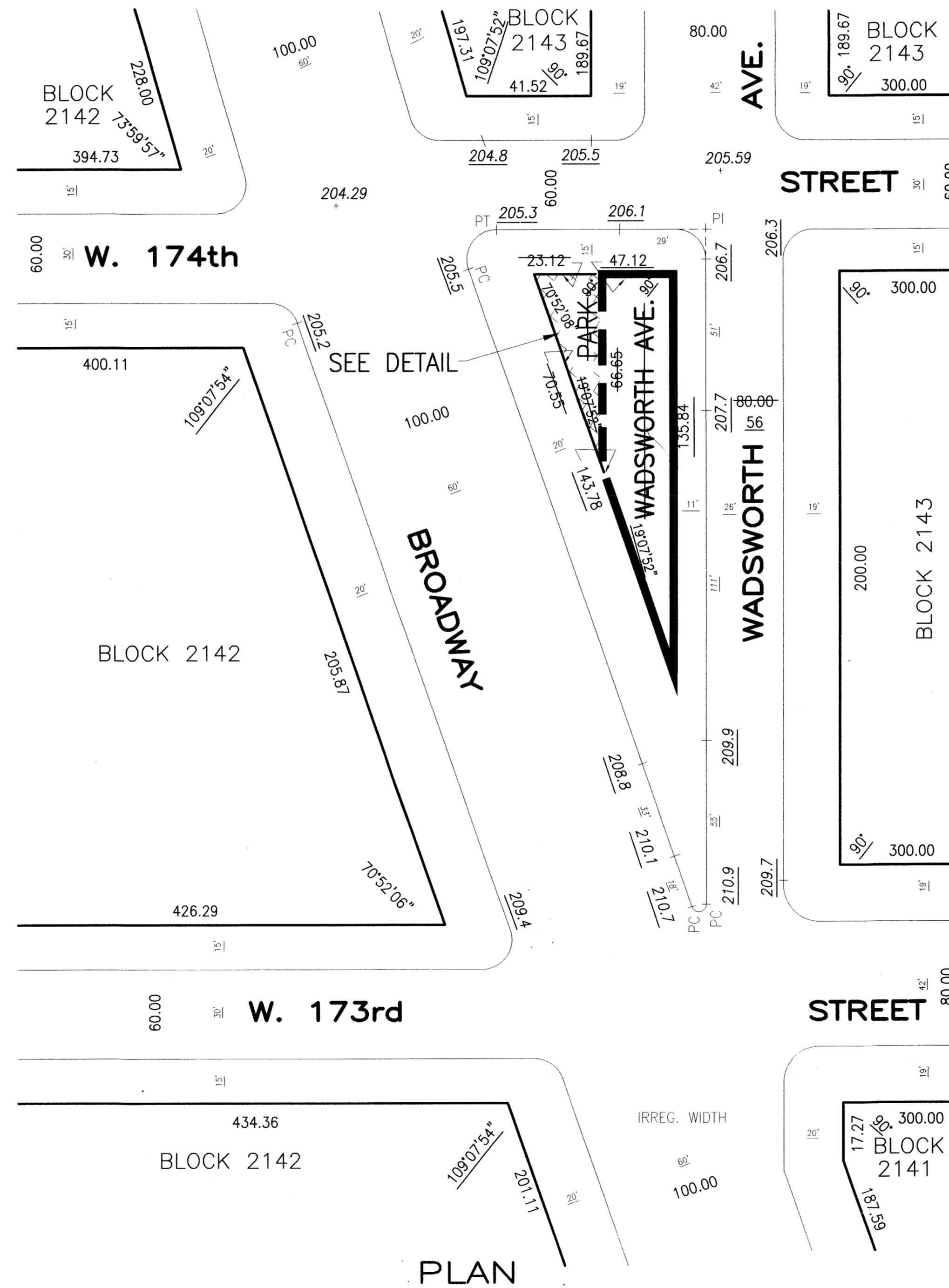
DETAIL  
SCALE: 1" = 16'

NOTE : BROADWAY WAS FORMERLY KNOWN AS KINGSBRIDGE ROAD

*Saul Johnson*

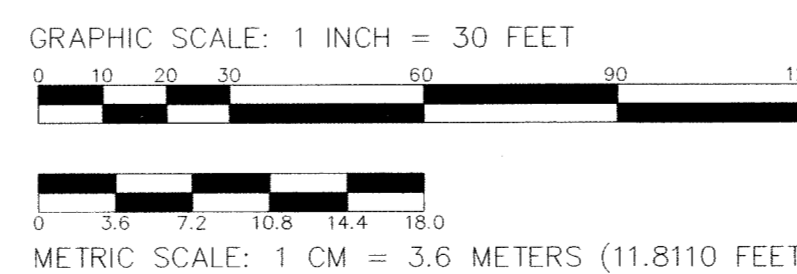
PREPARED BY MONTROSE SURVEYING COMPANY  
THIS CERTIFICATION IS FOR STREET GEOMETRY ONLY 54463006.DWG/DRN1VB

MAP ACC. NO. 30207/CPC 990169 MMM



PLAN

SCALE: 1" = 30'  
1cm = 3.6m



© 2003 President of the Borough of Manhattan

Drawer 42

MAP ACC. NO. 30207