

MAP ACC. NO. 30206

SHOWING A CHANGE IN THE CITY MAP
BY
THE ELIMINATION, DISCONTINUANCE AND CLOSING
OF
A PORTION OF EAST 118TH STREET
BETWEEN
PLEASANT AVENUE AND THE FDR DRIVE;
THE ELIMINATION, DISCONTINUANCE AND CLOSING
OF
A PORTION OF EAST 117TH STREET
BETWEEN
PLEASANT AVENUE AND THE FDR DRIVE;
THE WIDENING OF A PORTION
OF
THE FDR DRIVE ON ITS WESTERLY SIDE
FROM EAST 119TH STREET
TO A POINT
138.35' NORTH OF EAST 116TH STREET,

THE EXTINGUISHMENT OF A PERMANENT SEWER EASEMENT IN THE FORMER BED OF
EAST 117TH STREET WEST OF THE FDR DRIVE,
THE EXTINGUISHMENT OF A PERMANENT SEWER EASEMENT IN THE FORMER BED OF
EAST 118TH STREET WEST OF THE FDR DRIVE,

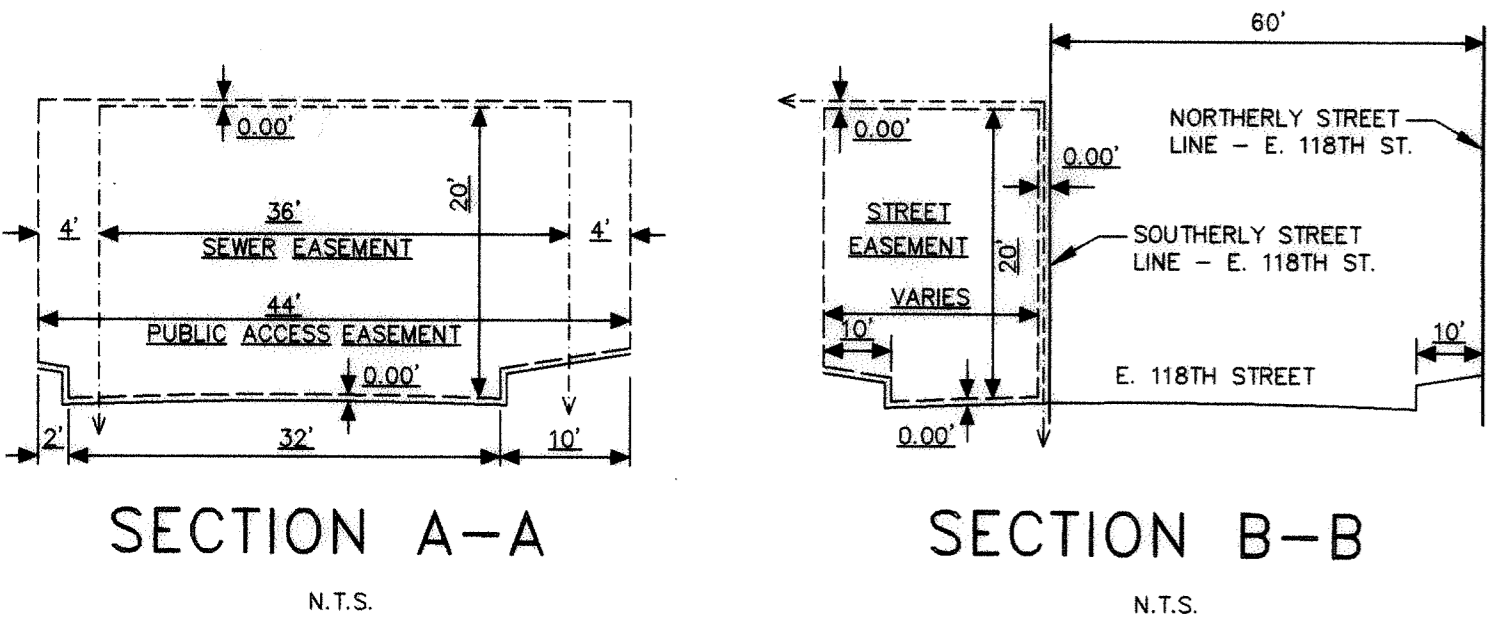
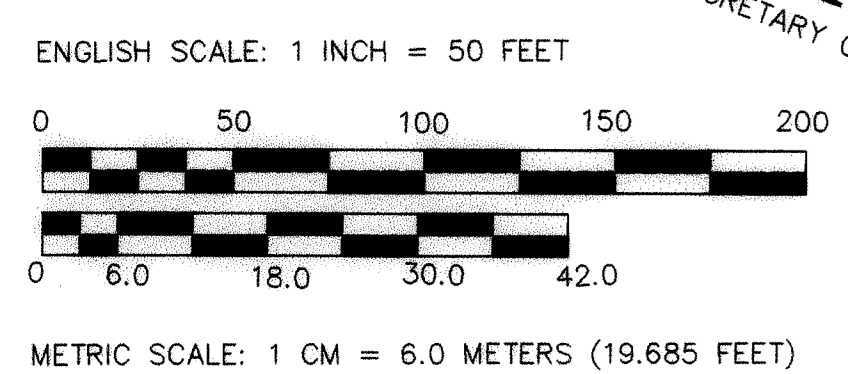
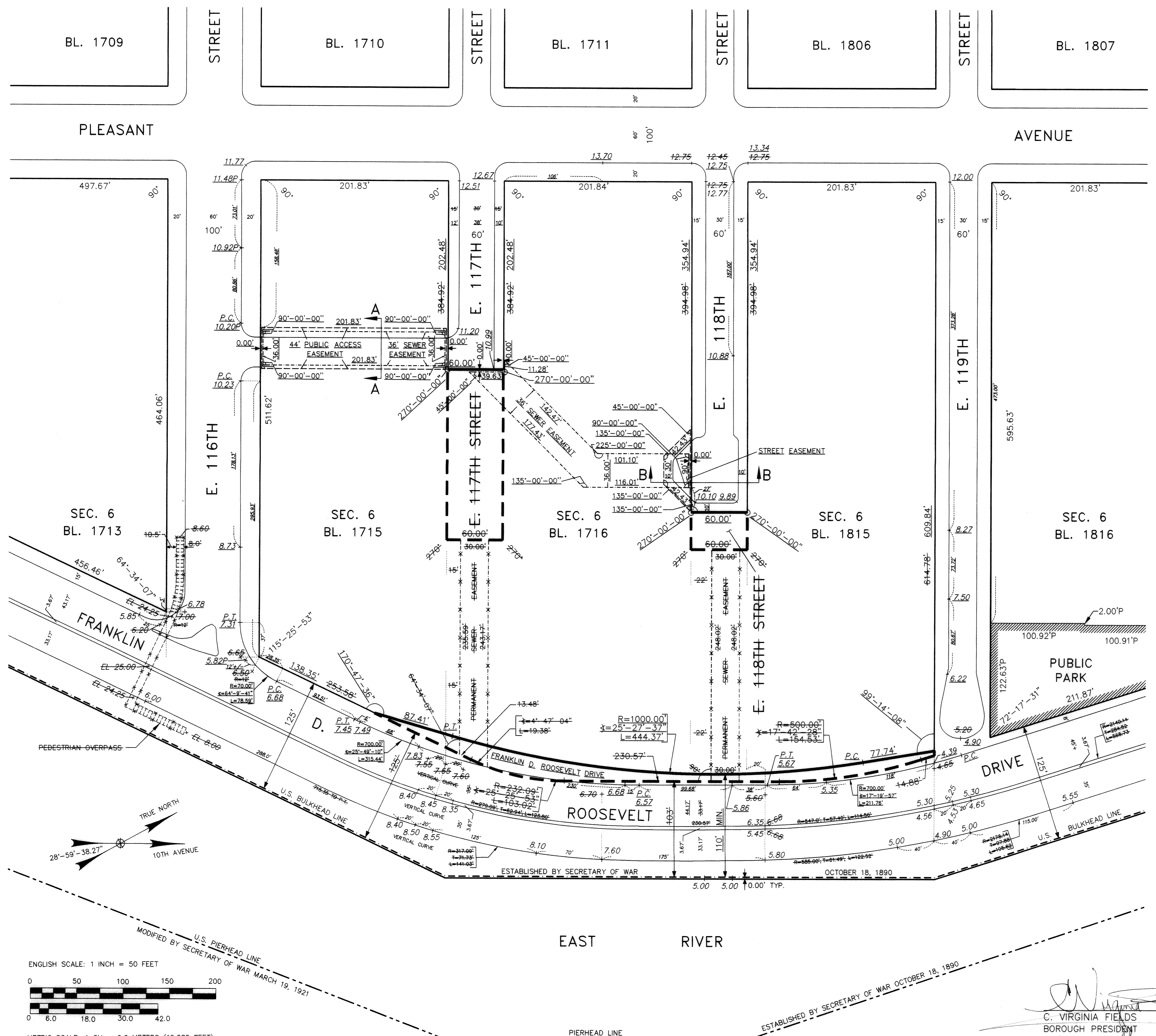
- THE DELINEATION, FOR INFORMATION PURPOSES ONLY
OF
1. A SEWER EASEMENT EXTENDING FROM EAST 118TH STREET TO EAST 117TH STREET;
 2. A SEWER EASEMENT EXTENDING FROM EAST 117TH STREET TO EAST 116TH STREET;
 3. A STREET EASEMENT AT THE NEW EASTERLY TERMINUS OF EAST 118TH STREET,
 4. A PUBLIC ACCESS EASEMENT EXTENDING FROM EAST 117TH STREET TO EAST 116TH STREET,

AND
THE ADJUSTMENT OF
GRADES AND BLOCK DIMENSIONS NECESSITATED THEREBY
ALL WITHIN THE AREA BOUNDED BY PLEASANT AVENUE, E. 119TH STREET,
FRANKLIN D. ROOSEVELT DRIVE AND E. 116TH STREET

DATED: MARCH 9, 1999

NOTES:

- Indicates street line heretofore established and hereby retained.
- - - Indicates sidewalk and roadway treatment hereby established and hereby retained.
- Indicates street line heretofore established and hereby eliminated.
- Indicates street line hereby established.
- ▨ PARK Indicates park heretofore established and hereby retained.
- - - Indicates U.S. Bulkhead line.
- - - Indicates U.S. Pierhead line.
- - - Indicates sewer easement hereby delineated.
- - - Indicates sewer easement heretofore delineated and hereby extinguished.
- - - Indicates public access easement or street easement hereby delineated.
- 100.92'P Indicates Park dimension heretofore established and hereby retained.
- 201.84' Indicates dimension heretofore established and hereby retained.
- 202.48' Indicates dimension hereby established.
- 384.92' Indicates dimension heretofore established and hereby eliminated.
- 30' Indicates sidewalk and roadway treatment dimension heretofore established and hereby retained.
- 12' Indicates sidewalk and roadway treatment dimension hereby established.
- 46' Indicates sidewalk and roadway treatment dimension hereby eliminated.
- 8.05' Indicates elevation heretofore established and hereby retained.
- 11.80' Indicates elevation hereby established.
- 5.82P Indicates elevation at top of pavement hereby established.
- 8.45' Indicates elevation heretofore established and hereby eliminated.
- 122.83' Indicates tie-in distance heretofore established and hereby retained.
- 158.66' Indicates tie-in distance hereby established.
- 44' Indicates tie-in distance heretofore established and hereby eliminated.
- 202.08' Indicates easement dimension hereby delineated.
- 36.00'P Indicates dimension of sewer easement heretofore delineated and hereby extinguished.
- P.C. Indicates point of curvature.
- P.T. Indicates point of tangency.



I, YVETTE V. GRUEL, SECRETARY OF THE CITY PLANNING COMMISSION, DO HEREBY CERTIFY THAT THIS MAP IS ONE OF EIGHT SIMILAR MAPS APPROVED BY THE CITY PLANNING COMMISSION ON THE 7TH DAY OF SEPTEMBER, 1999 (CALENDAR NO. 2), AND SUBSEQUENTLY APPROVED BY THE CITY COUNCIL ON OCTOBER 27, 1999 (Res. No. 1047), WHICH ACTION COMPRISED FINAL APPROVAL AND THAT THIS MAP WAS FILED ON THE DATE OF THIS CERTIFICATION AND WILL TAKE EFFECT ON THE FOLLOWING DAY.
DATED: NEW YORK, December 18, 2006
Yvette Gruel
SECRETARY, CITY PLANNING COMMISSION

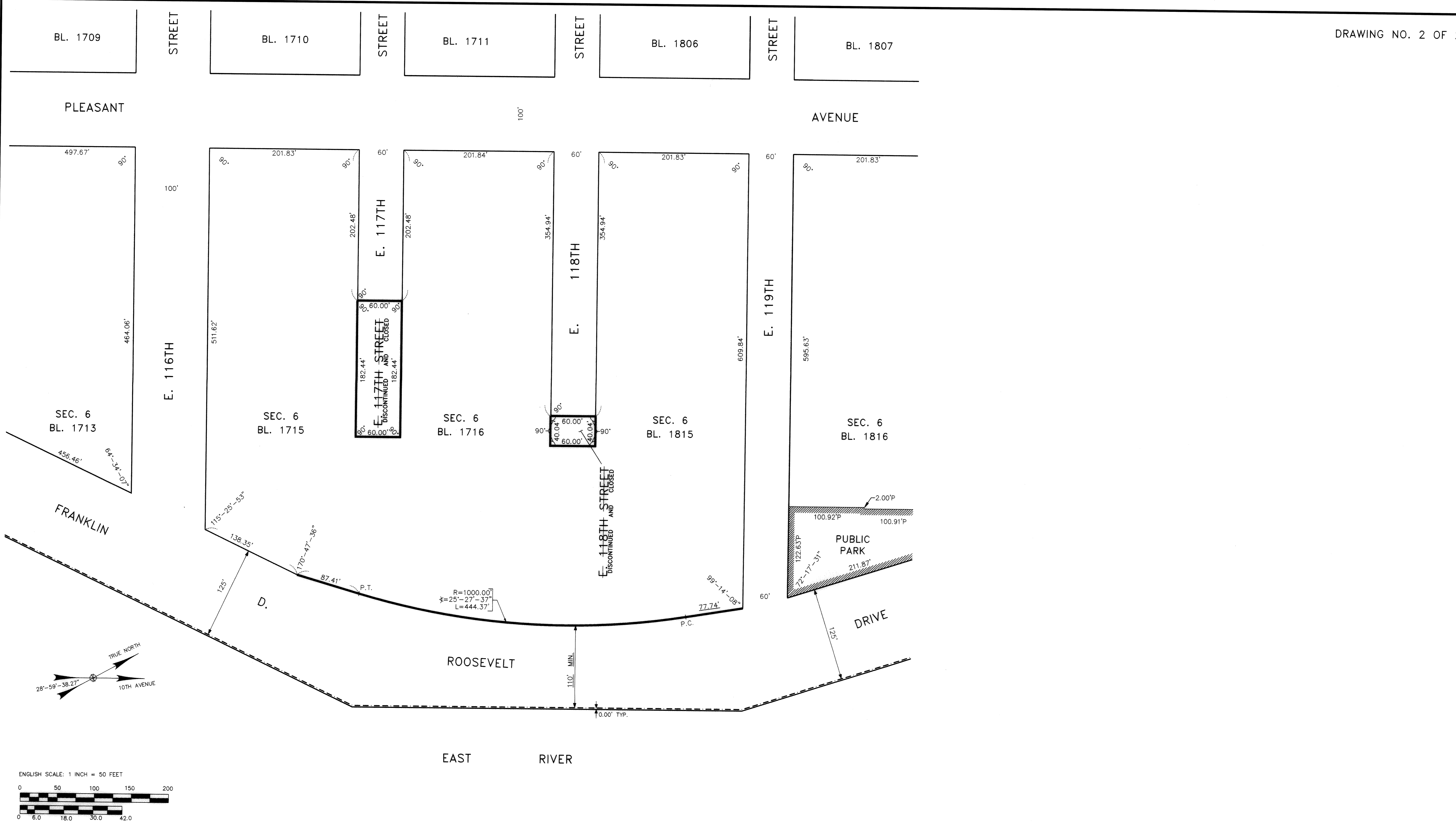
Elevations are for top of curb and are referred to the datum of the Topographical Bureau, Office of the President, Borough of Manhattan, which is 2.75 feet above the U.S.C. & G. mean sea level survey datum at Sandy Hook, New Jersey.

PREPARED BY:
Philip Habib & Associates
PHILIP HABIB & ASSOCIATES
BASED ON A SURVEY BY CONTROL POINT ASSOCIATES DATED JANUARY 21, 1997.

C. Virginia Fields
C. VIRGINIA FIELDS
BOROUGH PRESIDENT
Anthony C. Gulotta
ANTHONY C. GULOTTA, P.E.
CONSULTING ENGINEER

REFERENCE MAPS:
THIS MAP AMENDS OR SUPERSEDES THE FOLLOWING MAPS:

ACCESSION NUMBER	APPROVED BY B.O.E.	CITY PLANNING NUMBER
29821	March 11, 1965	CP-18442
29820	March 11, 1965	CP-18443
28394	May 7, 1942	CP-2524
28097	February 6, 1941	CP-1798
28064	September 26, 1940	CP-1439
28006	May 9, 1940	CP-401
27705	March 31, 1938	CP-86
27666	May 7, 1937	N/A
27252	October 11, 1934	N/A
23819	January 30, 1920	N/A



PLAN
 SHOWING THE DISCONTINUING AND CLOSING
 OF PORTIONS OF E. 117TH STREET AND E. 118TH STREET
 BETWEEN PLEASANT AVENUE AND FRANKLIN D. ROOSEVELT DRIVE

E. 117TH STREET
 DISCONTINUED AND CLOSED

NOTE:
 STREETS TO BE DISCONTINUING AND CLOSED
 ENCLOSED IN HEAVY BLACK LINES