

CITY OF NEW YORK  
OFFICE OF THE PRESIDENT BOROUGH OF MANHATTAN  
TOPOGRAPHICAL BUREAU

MAP ACC. NO. 30200

SHOWING A CHANGE IN THE CITY MAP

**BY ELIMINATING, DISCONTINUING AND CLOSING**

PEARL STREET FROM LAFAYETTE STREET TO CENTRE STREET,  
A PORTION OF CENTRE STREET BETWEEN DUANE STREET AND WORTH STREET, AND  
A PORTION OF LAFAYETTE STREET BETWEEN PEARL STREET AND DUANE STREET;

**BY ESTABLISHING**

THOMAS PAINE PARK ON A BLOCK BOUNDED BY WORTH STREET, LAFAYETTE STREET AND CENTRE STREET,  
AND ON THE NORTHWESTERLY CORNER OF A BLOCK BOUNDED BY WORTH STREET,  
CENTRE STREET, PEARL STREET AND A NEW STREET,

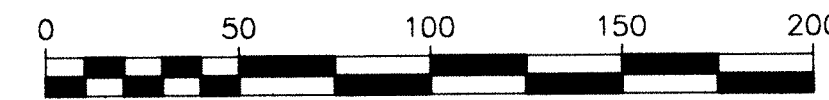
A PORTION OF CENTRE STREET BETWEEN PEARL STREET AND ST. ANDREW'S PLAZA,  
PORTIONS OF WORTH STREET BETWEEN LAFAYETTE STREET AND A NEW STREET, AND  
BLOCK DIMENSIONS,

**AND BY MODIFYING**

LEGAL GRADES AND ROADWAY TREATMENT,  
ALL WITHIN THE AREA GENERALLY BOUNDED BY WORTH STREET, CHAMBERS STREET,  
ELK STREET AND A NEW STREET.

DATED: NOVEMBER 13, 1996

SCALE: 1 INCH = 50 FEET-0 INCHES



APPROVED FOR DEPARTMENT OF PARKS  
AND RECREATION:

*[Signature]*  
COMMISSIONER, PARKS AND RECREATION

*[Signature]*  
PRESIDENT, BOROUGH OF MANHATTAN

*[Signature]* P.E.  
CONSULTING ENGINEER

**NOTES**

- COORDINATES SHOWN ON THIS DRAWING REFER TO THE COORDINATE SYSTEM SHOWN ON THE BOROUGH SURVEY MAPS, ON FILE IN THE TOPOGRAPHICAL BUREAU IN THE OFFICE OF THE PRESIDENT, BOROUGH OF MANHATTAN.
- ALL DIMENSIONS ARE IN FEET.
- REFER TO CONSTRUCTION DOCUMENTS FOR SIDEWALK PEDESTRIAN RAMP CURB CUT ELEVATIONS.
- "A NEW STREET" IS NOT IN USE FOR STREET PURPOSES. IT WAS ACQUIRED AND IS DEVELOPED WITH A FEDERAL COURT BUILDING. SEE 90 CIV.7995 UNITED STATES DISTRICT COURT, SOUTHERN DISTRICT OF NEW YORK, FOR THE LIMITS OF "A NEW STREET" ACQUIRED BY CONDEMNATION BY THE FEDERAL GOVERNMENT ON DECEMBER 13, 1990.
- LOCAL LAW NO. 100 FOR THE YEAR 1977, DESIGNATED COURT HOUSE PLOT, WORTH STREET, CENTRE STREET, PEARL STREET AND LAFAYETTE STREET AS THOMAS PAINE PARK.
- THE AREA GENERALLY BOUNDED BY READE ST., THE MUNICIPAL BUILDING, CENTRE ST., PEARL ST., AND LAFAYETTE ST. WAS DESIGNATED AS FOLEY SQUARE BY THE BOARD OF ALDERMEN, ON APRIL 20, 1926 (G.O. 55).

- Indicates street line heretofore established and hereby retained.
- Indicates street line hereby established.
- Indicates street line heretofore established and hereby eliminated.
- Indicates roadway and sidewalk treatment hereby established or heretofore established and retained.
- Indicates dimension heretofore established and hereby retained.
- Indicates dimension hereby established.
- Indicates dimension heretofore established and hereby eliminated.
- Indicates Park dimension hereby established.
- Indicates elevation heretofore established and hereby retained.
- Indicates elevation hereby established.
- Indicates elevation heretofore established and hereby eliminated.
- Indicates existing physical elevation.
- Indicates tie-in distance (to an elevation) heretofore established and hereby retained.
- Indicates tie-in distance (to an elevation) hereby established.
- Indicates tie-in distance (to an elevation) heretofore established and hereby eliminated.
- Indicates sidewalk and roadway treatment dimension heretofore established and retained.
- Indicates sidewalk and roadway treatment dimension hereby established.
- Indicates sidewalk and roadway treatment dimension heretofore established and hereby eliminated.
- Indicates Point of Curvature.
- Indicates Point of Tangency.
- Indicates Point of Compound Curvature.
- Indicates Point of Reverse Curvature.

Elevations refer to the datum of the Topographical Bureau, of the Manhattan Borough President's Office, which is 2.75 feet above the U.S.C. & G. Survey Datum at Sandy Hook, New Jersey. Elevations apply to top of curb unless otherwise indicated.

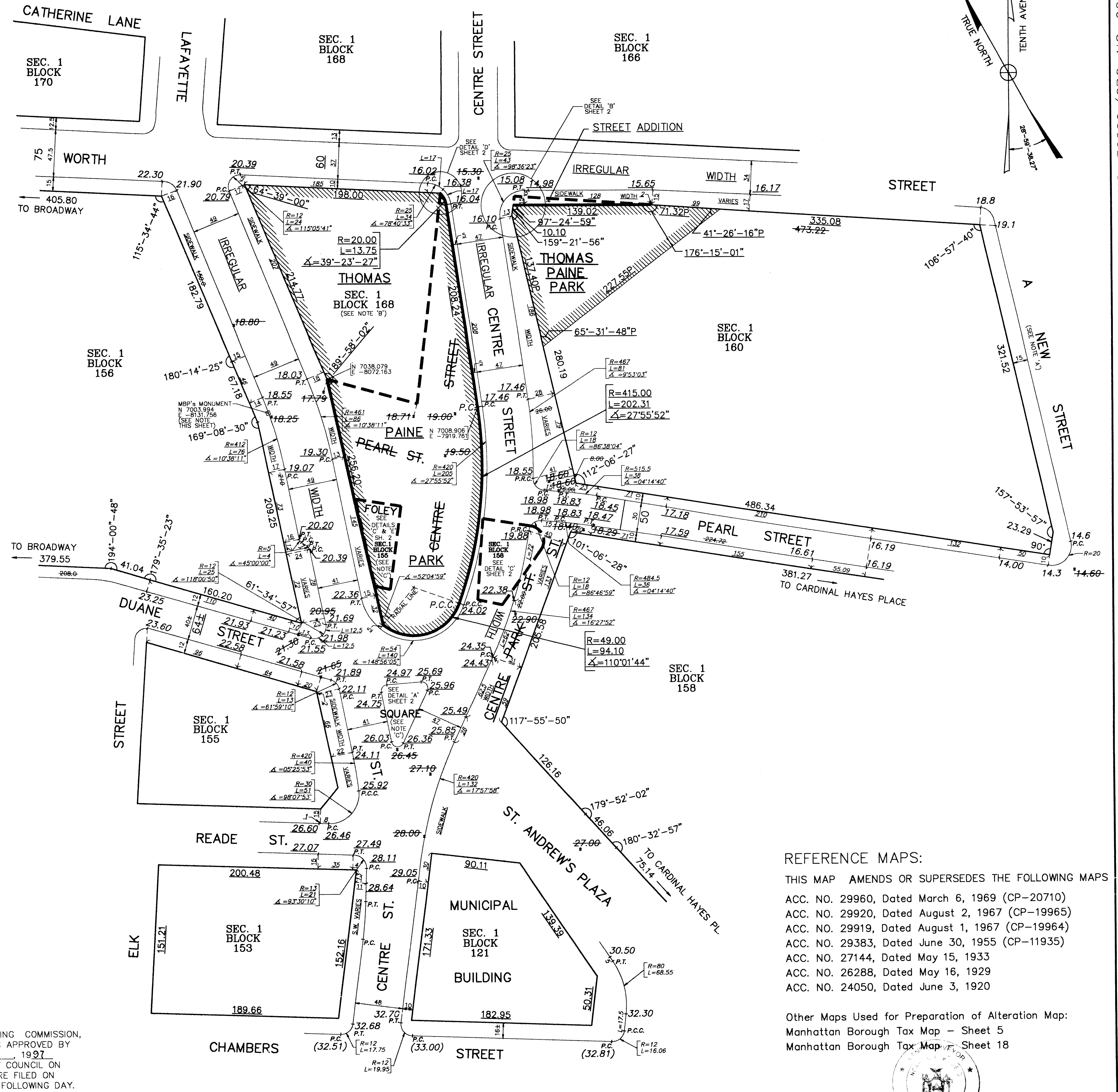
Indicates Park hereby established.

Indicates Discontinued and Closed Street or portion thereof.

I, Rosa R. Romero, SECRETARY OF THE CITY PLANNING COMMISSION, DO HEREBY CERTIFY THAT THIS MAP IS ONE OF eight SIMILAR MAPS APPROVED BY THE CITY PLANNING COMMISSION ON THE 28<sup>th</sup> DAY OF April, 1997 (CALENDAR NO. 1), AND SUBSEQUENTLY APPROVED BY THE CITY COUNCIL ON June 5, 1997 (RES. NO. 2415) AND THAT THESE MAPS WERE FILED ON THE DATE OF THIS CERTIFICATION AND WILL TAKE EFFECT ON THE FOLLOWING DAY.

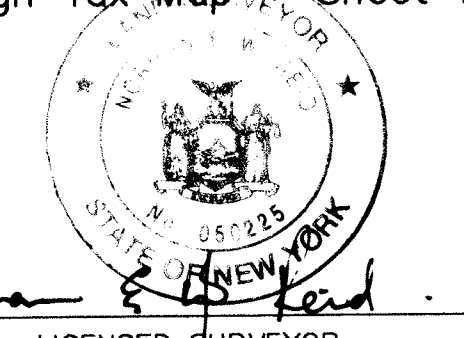
DATE: NEW YORK August 1, 1997

*[Signature]*  
SECRETARY, CITY PLANNING COMMISSION



- REFERENCE MAPS:**
- THIS MAP AMENDS OR SUPERSEDES THE FOLLOWING MAPS
  - ACC. NO. 29960, Dated March 6, 1969 (CP-20710)
  - ACC. NO. 29920, Dated August 2, 1967 (CP-19965)
  - ACC. NO. 29919, Dated August 1, 1967 (CP-19964)
  - ACC. NO. 29383, Dated June 30, 1955 (CP-11935)
  - ACC. NO. 27144, Dated May 15, 1933
  - ACC. NO. 26288, Dated May 16, 1929
  - ACC. NO. 24050, Dated June 3, 1920

Other Maps Used for Preparation of Alteration Map:  
Manhattan Borough Tax Map - Sheet 5  
Manhattan Borough Tax Map - Sheet 18



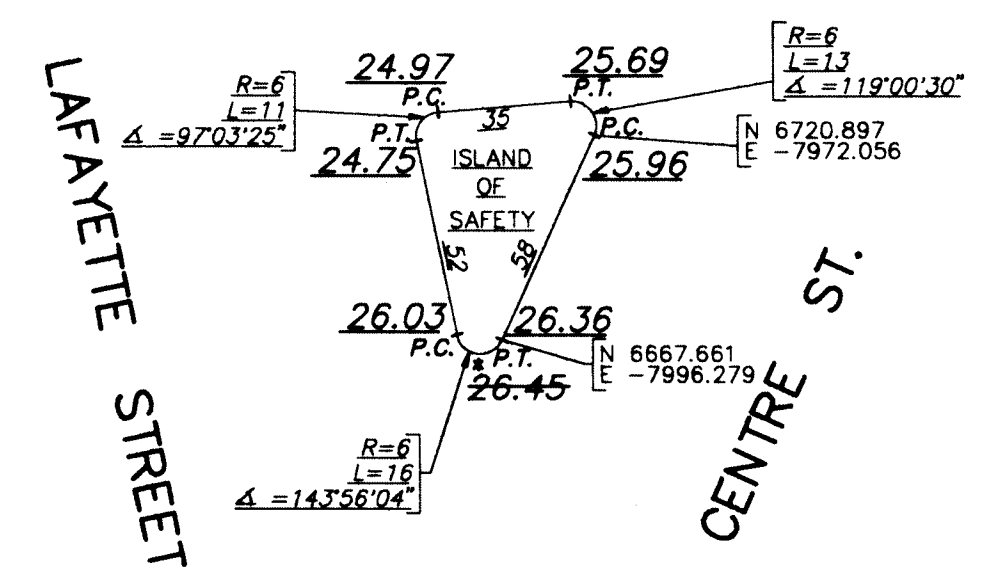
THIS CERTIFICATION IS FOR  
STREET GEOMETRY ONLY.

LICENSED SURVEYOR

PLAN  
SCALE: 1"=50'-0"

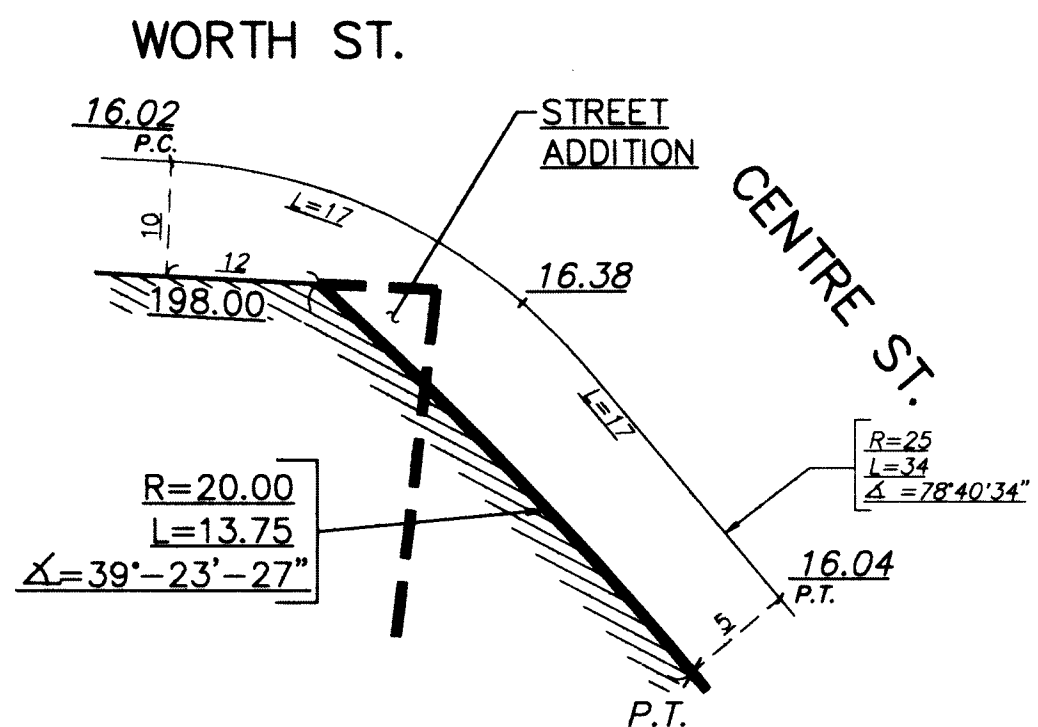
MAP ACC. NO. 30200 (CPC. NO. 960195MMM)

MAP ACC. NO. 30200 (CPC. NO. 960195MMM)



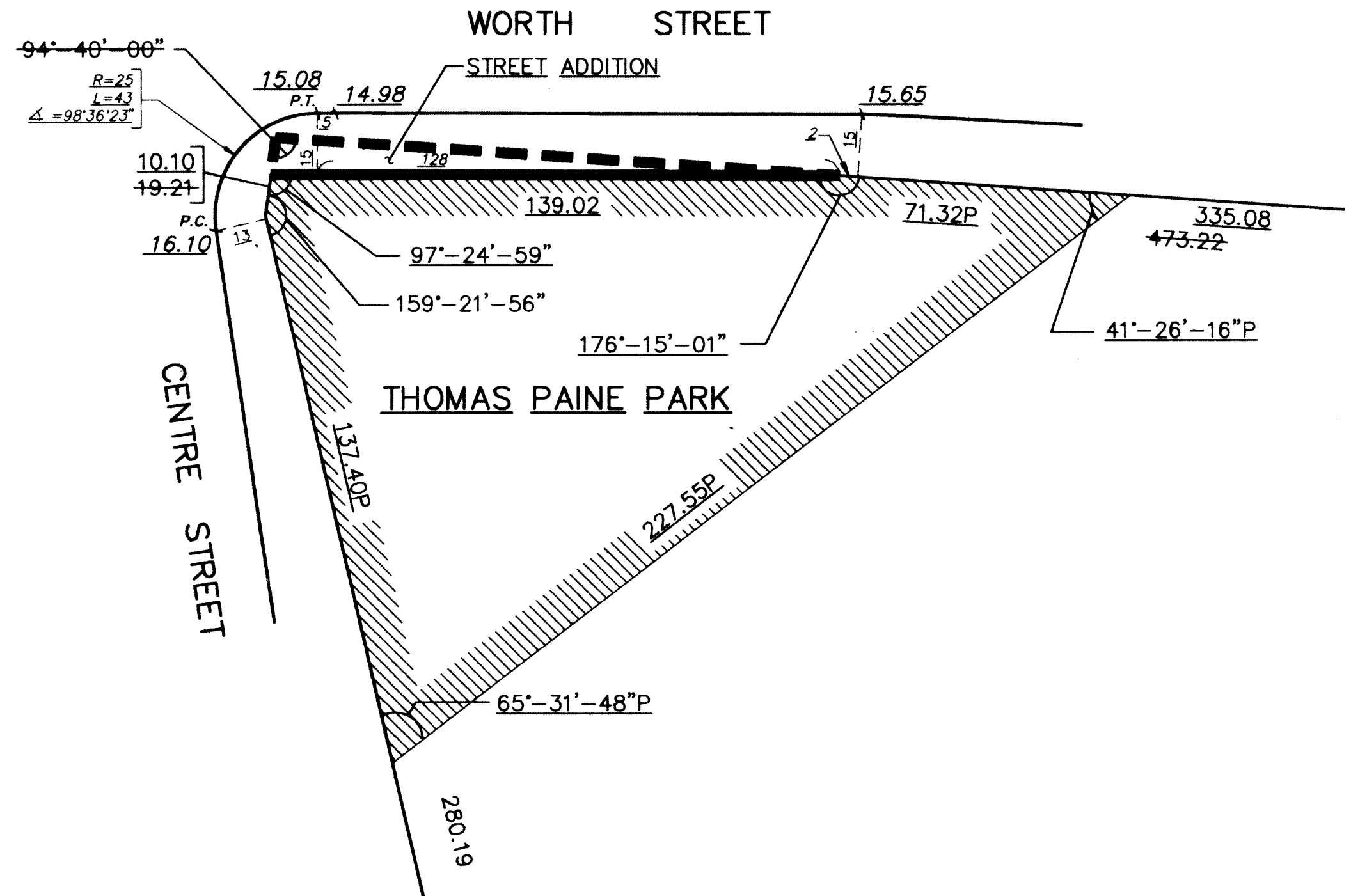
DETAIL 'A'  
SCALE: 1 INCH = 50 FEET

PARTIAL PLAN  
SHOWING ROADWAY  
TREATMENT AND GRADES  
SEE SHEET 1 FOR LOCATION



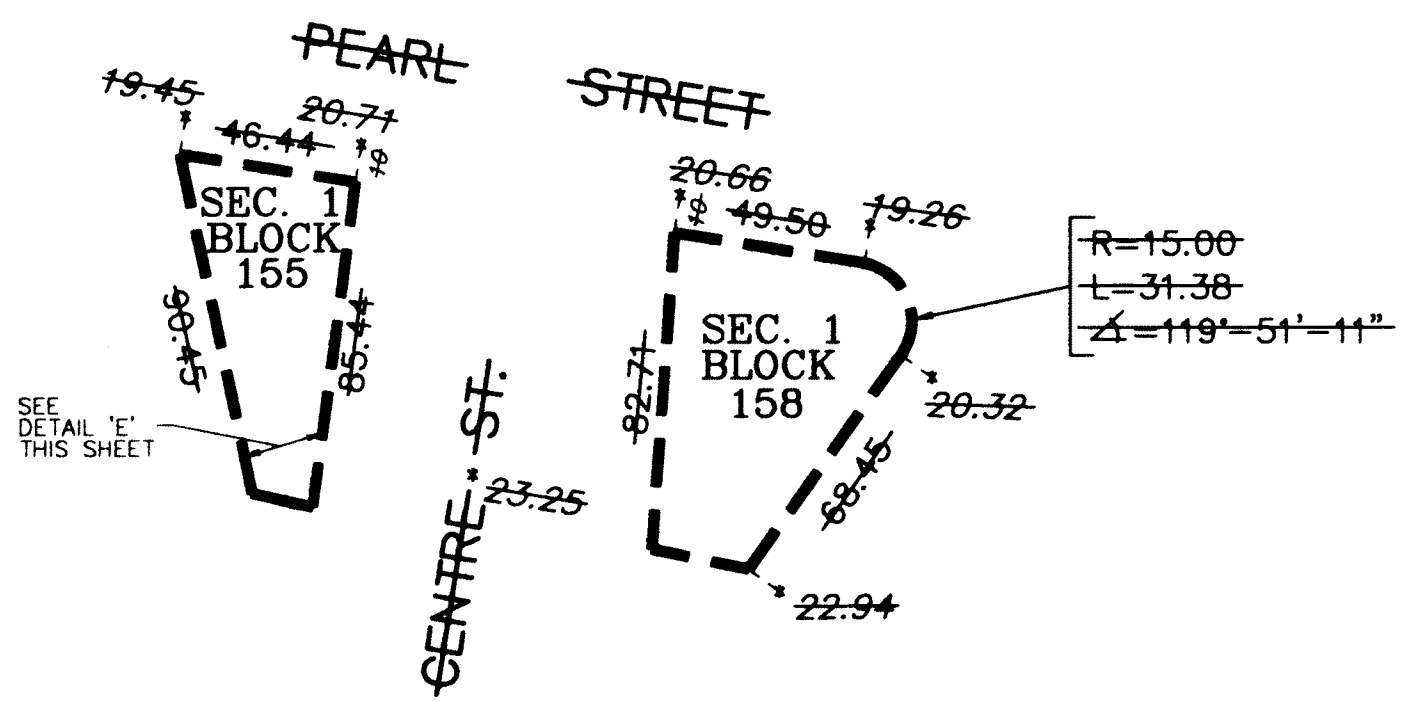
DETAIL 'D'  
N.T.S.

PARTIAL PLAN  
SEE SHEET 1 FOR LOCATION



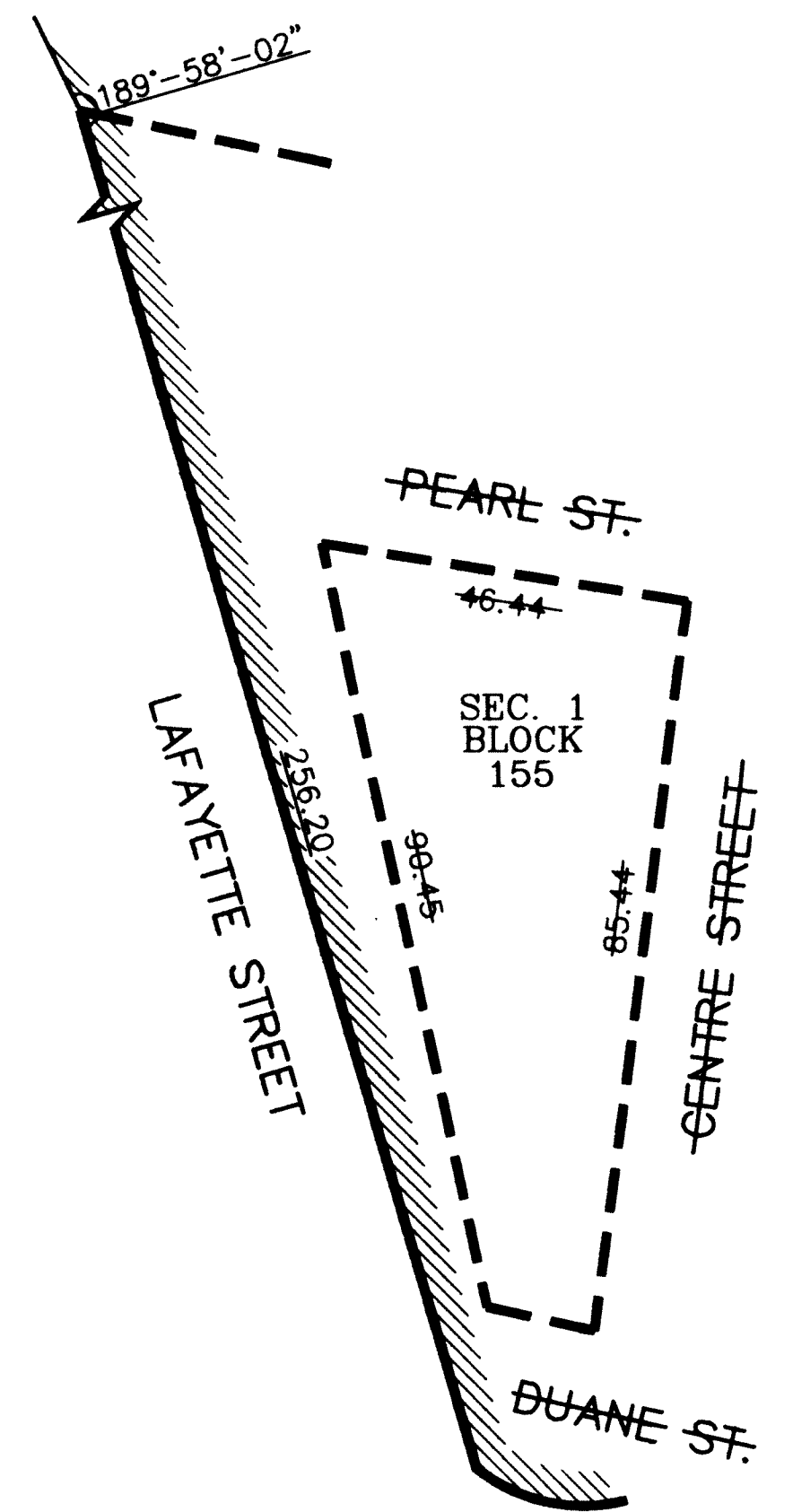
DETAIL 'B'  
SCALE: 1 INCH = 30 FEET

PARTIAL PLAN  
SEE SHEET 1 FOR LOCATION



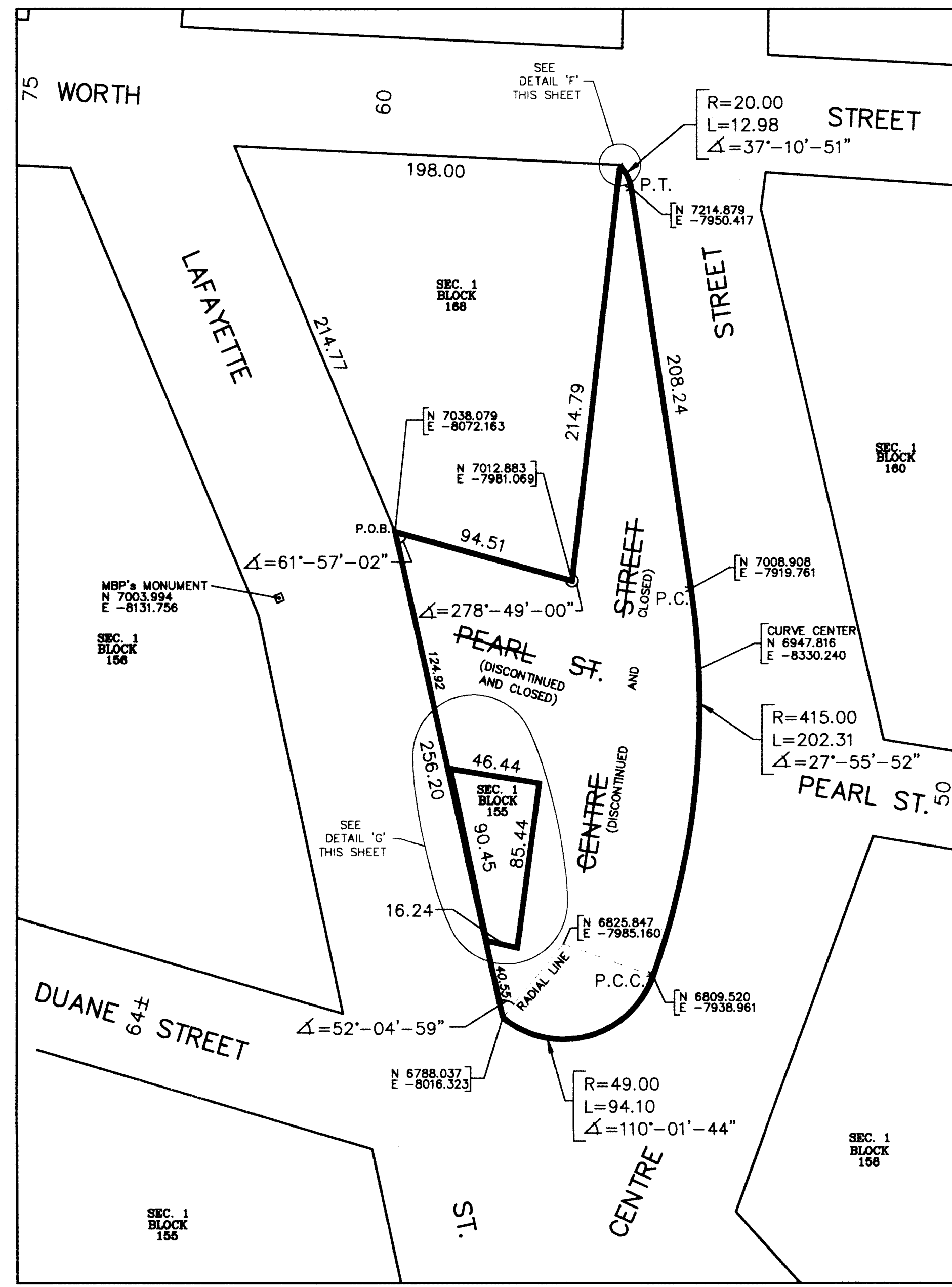
DETAIL 'C'  
SCALE: 1 INCH = 50 FEET

PARTIAL PLAN  
SHOWING STREET LINES  
TO BE ELIMINATED  
SEE SHEET 1 FOR LOCATION



DETAIL 'E'  
N.T.S.

PARTIAL PLAN  
SEE SHEET 1 FOR LOCATION

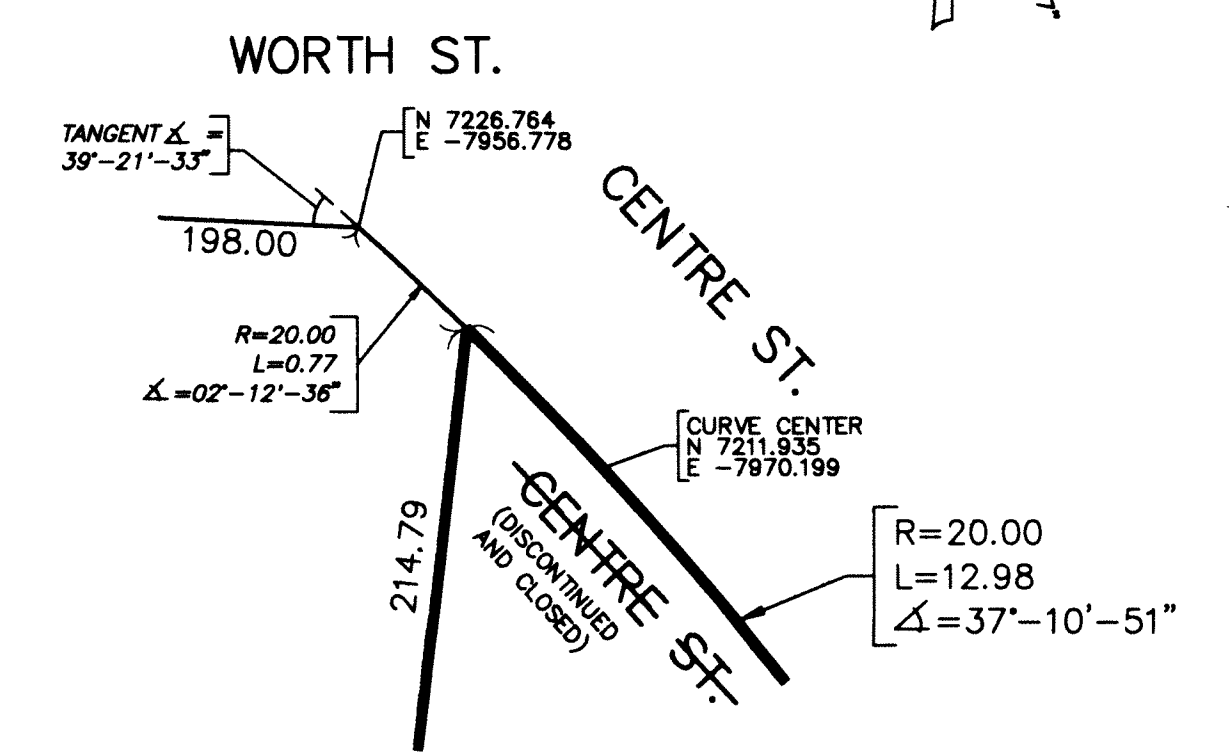
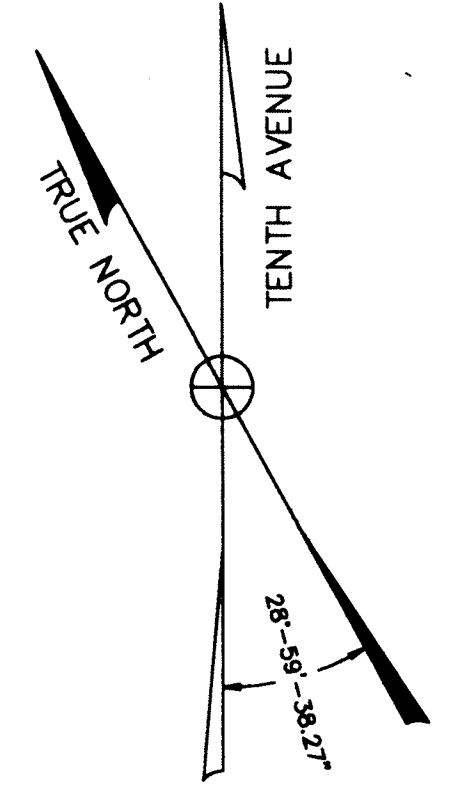


**DISCONTINUING AND CLOSING MAP**

PLAN SHOWING THE DISCONTINUANCE AND CLOSING OF  
PEARL STREET BETWEEN CENTRE STREET AND LAFAYETTE STREET  
A PORTION OF CENTRE STREET BETWEEN DUANE STREET AND WORTH STREET, AND  
A PORTION OF LAFAYETTE STREET BETWEEN PEARL STREET AND DUANE STREET.

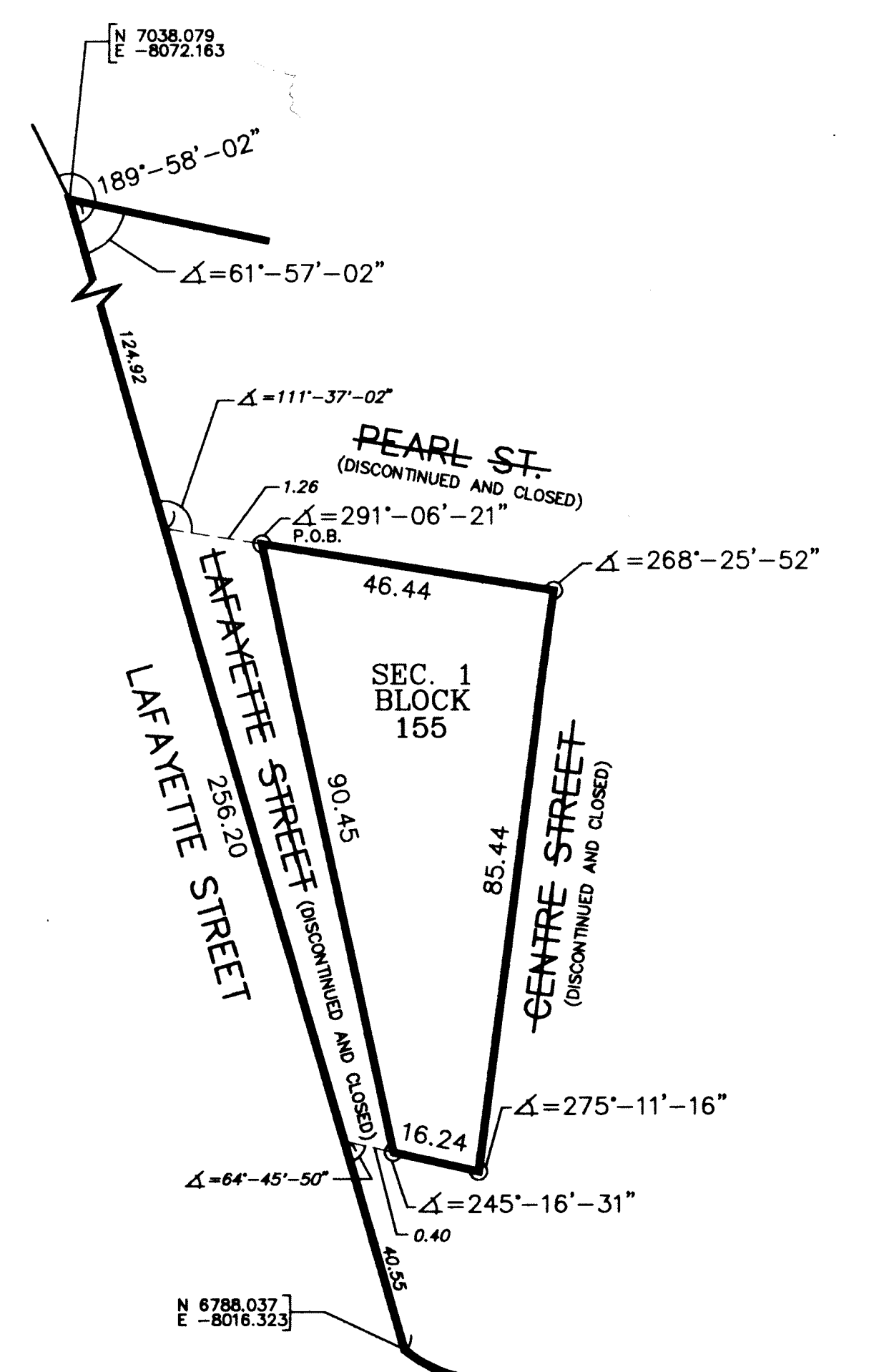
NOTE: STREETS TO BE DISCONTINUED AND CLOSED ENCLOSED IN HEAVY BLACK LINES

SCALE: 1 INCH = 50 FEET



DETAIL 'F'  
SCALE: 1 INCH = 1 FOOT

PARTIAL PLAN  
SEE PLAN THIS SHEET



DETAIL 'G'  
N.T.S.

PARTIAL PLAN  
SEE PLAN THIS SHEET