

CITY OF NEW YORK
OFFICE OF THE PRESIDENT BOROUGH OF MANHATTAN
MAP ACC. NO. 30144

SHOWING
A CHANGE IN THE CITY MAP

BY ELIMINATING, DISCONTINUING AND CLOSING* A PORTION OF
WEST 64TH STREET EXTENDING WEST FROM WEST END AVENUE
TO THE CONRAIL RIGHT-OF-WAY

AND

BY MODIFYING THE GRADES AND TREATMENT NECESSITATED THEREBY

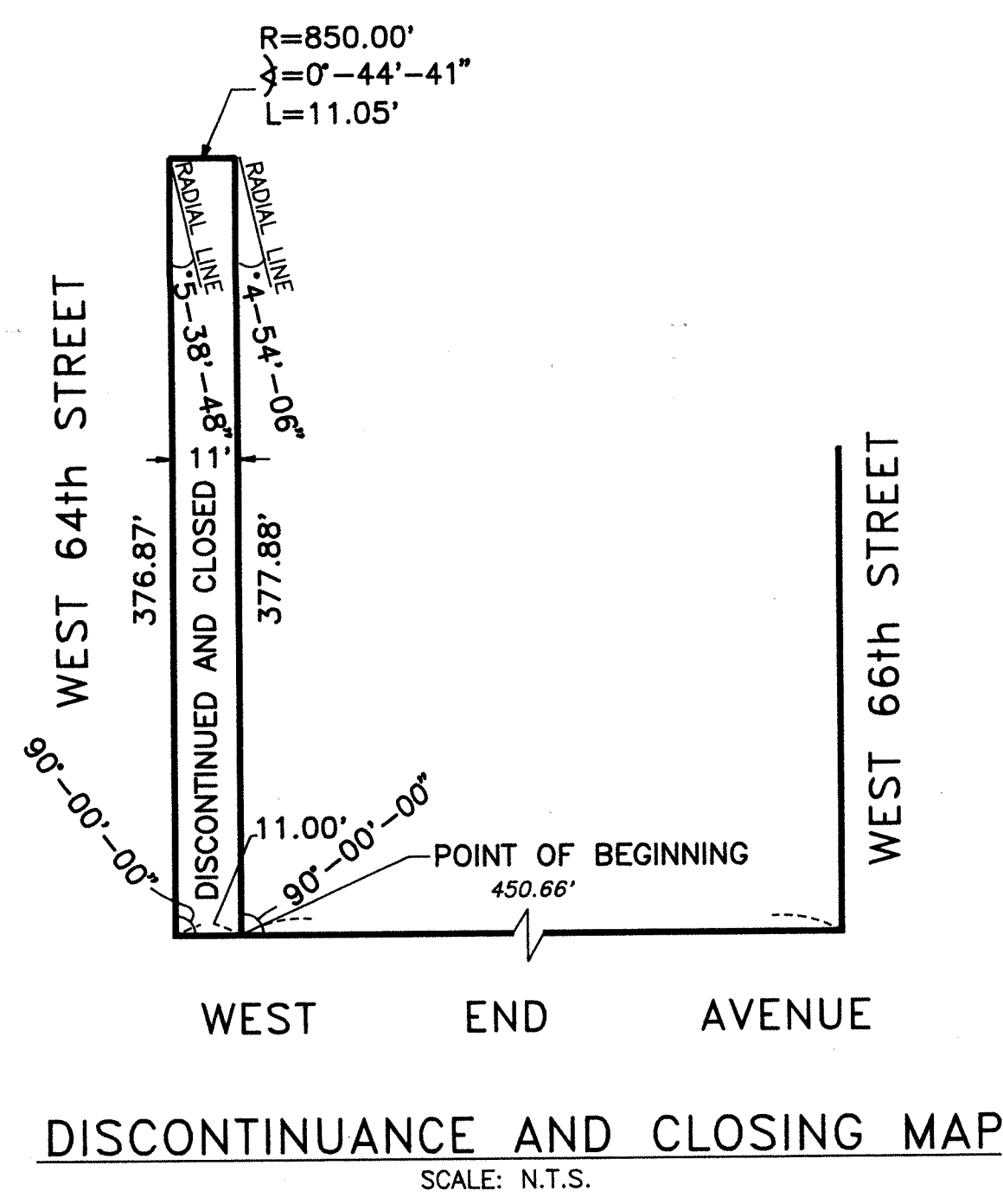
DATED: OCTOBER 29, 1992

* THIS ELIMINATION, DISCONTINUANCE AND CLOSING ASSUMES
AS FACT THE PRIOR ESTABLISHMENT OF WEST 64th STREET AT A
WIDTH OF 81 FEET, AND IF NOT FACT AT VERIFICATION AND FILING
OF THIS MAP, THIS ACTION WILL THEN CONSTITUTE THE EFFECTIVE
ESTABLISHMENT OF WEST 64th STREET AT A WIDTH OF 70 FEET.

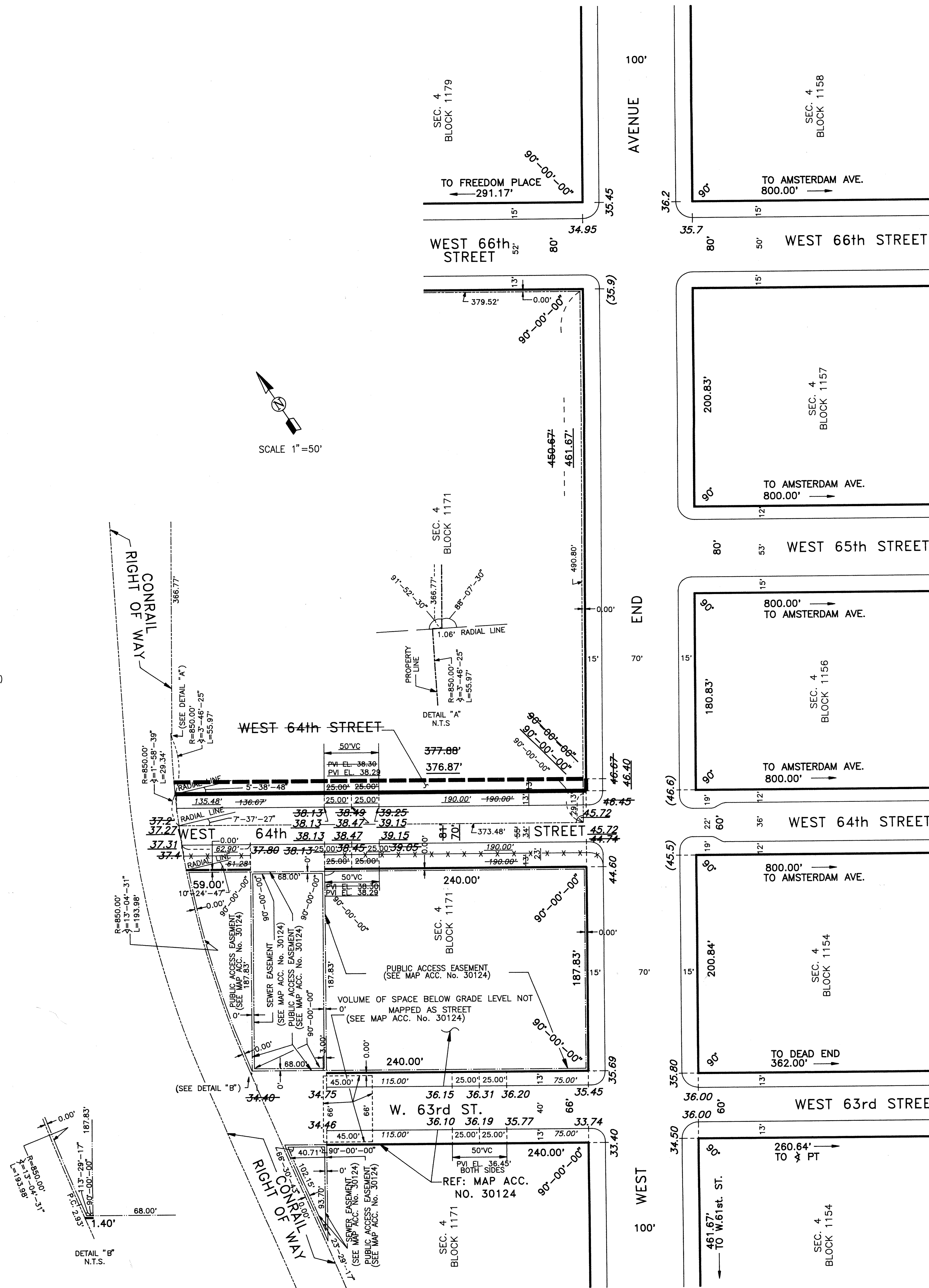
Ruth Messinger
RUTH MESSINGER
PRESIDENT, BOROUGH OF MANHATTAN

Richard Herschlag
RICHARD HERSCHLAG, P.E.
BOROUGH ENGINEER
OFFICE OF MANHATTAN BOROUGH PRESIDENT

Paul R. Ramirez
I, PAUL R. RAMIREZ, SECRETARY OF THE CITY PLANNING COMMISSION, DO HEREBY
CERTIFY THAT THIS IS ONE OF 8 SIMILAR MAPS ADOPTED BY THE CITY
PLANNING COMMISSION ON THE 31 DAY OF MARCH, 1993 (CAL. No. 22)
AND SUBSEQUENTLY ADOPTED BY THE CITY COUNCIL ON JUNE 2, 1993 (RESOLUTION No. 1449)
AND THAT THESE MAPS WERE FILED ON THE DATE OF THIS CERTIFICATION AND WILL TAKE
EFFECT ON THE FOLLOWING DAY.
DATE: 10/29/92
SECRETARY CITY PLANNING COMMISSION



PREPARED BY: PHILIP HABIB & ASSOC.



REFERENCE MAPS

- ACC. NO. 30124 DATED 9-6-1989 (CPC NO. C890856 MMM)
- ACC. NO. 28868 DATED 7-7-1947 (CP-5072)
- ACC. NO. 30094A APPROVED (3-15-1927)
- ACC. NO. 28436 DATED 10-8-1942 (CP-2508)
- ACC. NO. 28416 DATED 1-9-1941 (CP-1854)
- ACC. NO. 29580 DATED 2-26-1965 (CP-18847)
- ACC. DATED 10-3-1941 (CP-2352)

LEGEND

- INDICATES STREET LINE HERETOFORE ESTABLISHED AND HEREBY RETAINED.
- INDICATES THEORETICAL CURB LINE FOR GRADE COMPUTATION. ACTUAL CURB LOCATION IS DETERMINED BY NYCDOT.
- INDICATES STREET LINE HERETOFORE ESTABLISHED AND HEREBY ELIMINATED.
- INDICATES STREET LINE HEREBY ESTABLISHED.
- INDICATES EXISTING PUBLIC ACCESS EASEMENT LINE.
- INDICATES THEORETICAL CURB LINE HERETOFORE ESTABLISHED AND HEREBY ELIMINATED.
- INDICATES EXISTING SEWER EASEMENT.
- INDICATES APPLICANT'S PROPERTY LINE OR CONRAIL RIGHT-OF-WAY LINE.
- 66' INDICATES DIMENSION HERETOFORE ESTABLISHED AND HEREBY RETAINED.
- 70.00' INDICATES DIMENSION HEREBY ESTABLISHED.
- 81.00' INDICATES DIMENSION HERETOFORE ESTABLISHED AND HEREBY ELIMINATED.
- 38.13 INDICATES ELEVATION HERETOFORE ESTABLISHED AND HEREBY RETAINED.
- 38.13 INDICATES ELEVATION HEREBY ESTABLISHED.
- 46.67' INDICATES ELEVATION HERETOFORE ESTABLISHED AND HEREBY ELIMINATED.
- (35.9) INDICATES EXISTING ELEVATION.
- 190.00' INDICATES TIE-IN DISTANCE (TO AN ELEVATION) HERETOFORE ESTABLISHED AND HEREBY RETAINED.
- 190.00' INDICATES TIE-IN DISTANCE (TO AN ELEVATION) HEREBY ESTABLISHED.
- 136.67' INDICATES A TIE-IN DISTANCE (TO AN ELEVATION) HERETOFORE ESTABLISHED AND HEREBY ELIMINATED.
- 13' INDICATES THEORETICAL SIDEWALK AND ROADWAY TREATMENT DIMENSION HERETOFORE ESTABLISHED AND HEREBY RETAINED.
- 44' INDICATES THEORETICAL SIDEWALK AND ROADWAY TREATMENT DIMENSION HEREBY ESTABLISHED.
- 55' INDICATES THEORETICAL SIDEWALK AND ROADWAY TREATMENT DIMENSION HERETOFORE ESTABLISHED AND HEREBY ELIMINATED.
- 379.52' INDICATES EXISTING EASEMENT OR PROPERTY DIMENSION.

ELEVATIONS ARE FOR THE THEORETICAL TOP OF CURB AND ARE REFERRED TO THE DATUM OF THE TOPOGRAPHICAL BUREAU, BOROUGH OF MANHATTAN WHICH IS 2.75 FEET ABOVE THE U.S.C. & G. SURVEY DATUM MEAN SEA LEVEL AT SANDY HOOK, NEW JERSEY.

EASEMENTS AND PROPERTY LINES ARE SHOWN FOR INFORMATIONAL PURPOSES ONLY AND ARE NOT FORMALLY PART OF THE OFFICIAL CITY MAP.

MAP ACC. NO. 30144 (CP NO. C920460 MMM)

MAP ACC. NO. 30144 (CP NO. C920460 MMM)