

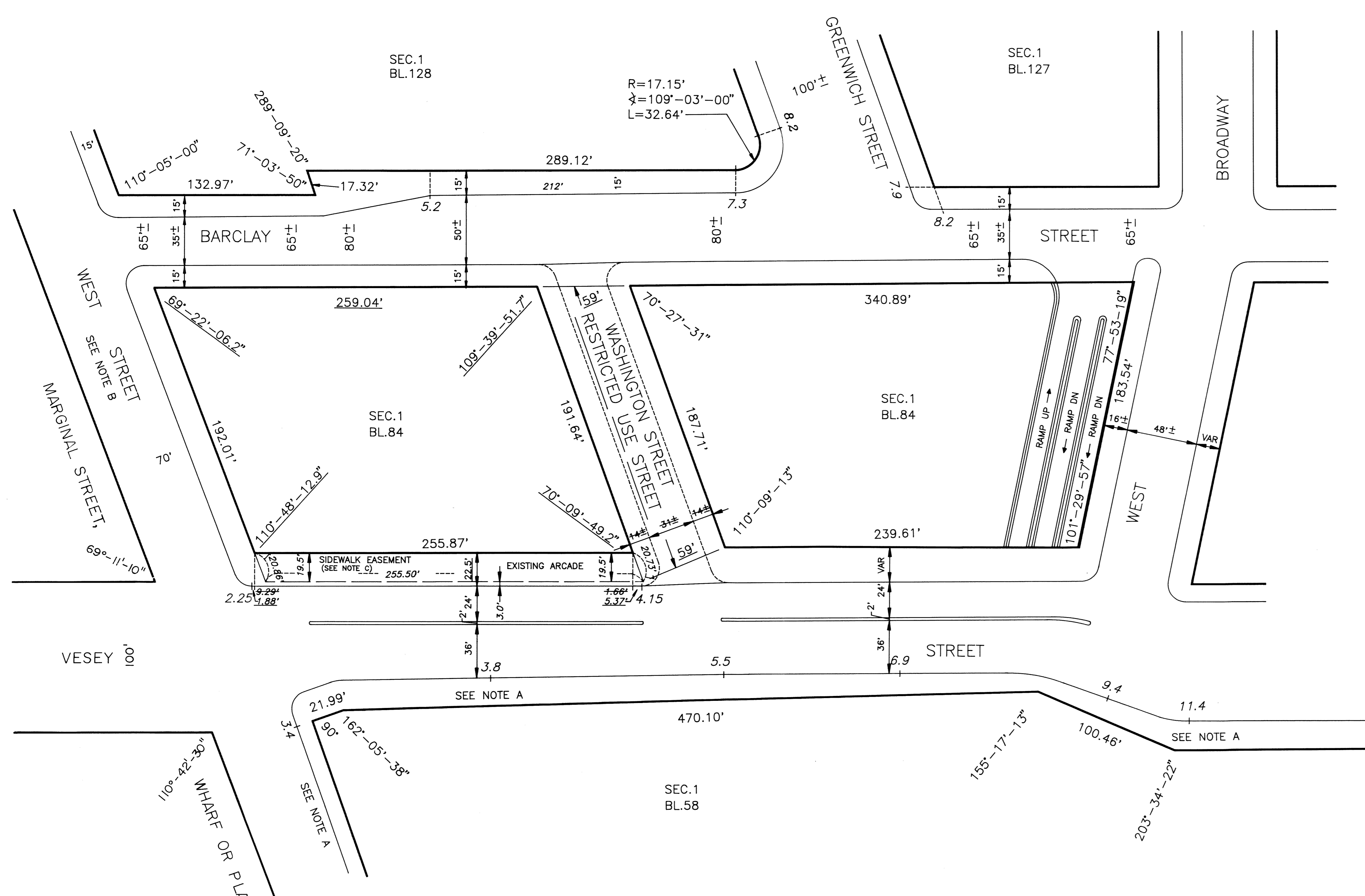
REFERENCE MAPS

- ACC. NO. 25198
- ACC. NO. (CP-2351)
- ACC. NO. 29910 (CP-19753)
- ACC. NO. 29985 (CP-21126)
- ACC. NO. 30025 (CP-22146)
- ACC. NO. 30116 (C841002MMM)

LEGEND

- INDICATES STREET LINE HERETOFORE ESTABLISHED AND HEREBY RETAINED.
 - INDICATES STREET TREATMENT LINE.
 - INDICATES STREET TREATMENT LINE HERETOFORE ESTABLISHED AND HEREBY ELIMINATED.
 - INDICATES SIDEWALK EASEMENT LINE.
 - 470.10' INDICATES DIMENSION HERETOFORE ESTABLISHED AND HEREBY RETAINED.
 - 3.8 INDICATES LEGAL GRADES HERETOFORE ESTABLISHED AND HEREBY RETAINED.
 - 212' INDICATES TIE-IN DIMENSION HERETOFORE ESTABLISHED AND HEREBY RETAINED.
 - 9.29' INDICATES TIE-IN DIMENSION HERETOFORE ESTABLISHED AND HEREBY ELIMINATED.
 - 1.88' INDICATES TIE-IN DIMENSION HEREBY ESTABLISHED.
 - 24' INDICATES STREET TREATMENT DIMENSION HERETOFORE ESTABLISHED AND HEREBY RETAINED.
 - 34± INDICATES STREET TREATMENT DIMENSION HERETOFORE ESTABLISHED AND HEREBY ELIMINATED.
 - 22.5' INDICATES STREET TREATMENT DIMENSION HEREBY ESTABLISHED.
 - 255.50' INDICATES EXISTING DIMENSION OF A SIDEWALK EASEMENT.
- ELEVATIONS ARE FOR THE TOP OF CURB AND ARE REFERRED TO THE DATUM OF THE TOPOGRAPHICAL BUREAU, BOROUGH OF MANHATTAN WHICH IS 2.75 FEET ABOVE THE U.S.C.&G. DATUM AT SANDY HOOK.

- NOTE A: PORTIONS OF VESEY STREET AND WEST STREET ARE MAPPED TO A LOWER LIMITING PLANE. SEE ALTERATION MAP ACC. NO. 29910 ADOPTED BY THE BOARD OF ESTIMATE ON JUNE 22, 1967 (CAL. NO.1)
- NOTE B: FOR DETAILS OF GRADES AND A MAPPED ELEVATED HIGHWAY IN WEST STREET, SEE ALTERATION MAP DCP NO. CP-2351 ADOPTED BY THE BOARD OF ESTIMATE ON MAY 23, 1946 (CAL. NO.12A)
- NOTE C: ON APRIL 4, 1924 (CAL. NO. 87), THE BOARD OF ESTIMATE APPROVED AN AGREEMENT GRANTING AN EASEMENT TO THE CITY BY NEW YORK TELEPHONE COMPANY FOR AN ARCADED SIDEWALK THROUGH A PORTION OF VESEY STREET, PROVIDING THAT THE CITY WILL NOT CONDEMN SAID PORTION OF VESEY STREET FOR STREET PURPOSE.



CITY OF NEW YORK
OFFICE OF THE PRESIDENT
BOROUGH OF MANHATTAN
MAP ACC. NO. 30141

SHOWING
THE DESIGNATION OF
WASHINGTON STREET
FROM
VESEY STREET TO BARCLAY STREET
AS A RESTRICTED USE STREET
AND THE ADJUSTMENT OF BLOCK DIMENSIONS
IN THE VICINITY THEREOF.

DATED: AUGUST 17, 1992 SCALE: 1"=40'

Richard Herschlag
RICHARD HERSCHLAG, P.E.
BOROUGH ENGINEER

Ruth Messinger
RUTH MESSINGER
BOROUGH PRESIDENT

I, Lois McDaniel, Secretary of the City Planning Commission, do hereby certify that this map is one of eight similar maps approved by the City Planning Commission on the 31st day of March, 1993 (Cal.No. 25), which action comprised final approval, and that these maps were filed on the date of this certification and will take effect on the following day.

DATE: New York _____

Secretary, City Planning Commission *RAC*

PREPARED BY: PHILIP HABIB & ASSOC.