

**LEGEND**

- INDICATES STREET LINE HERETOFORE ESTABLISHED AND HEREBY RETAINED.
  - INDICATES THEORETICAL CURB LINE FOR GRADE COMPUTATION. ACTUAL CURB LOCATION IS DETERMINED BY NYC DOT.
  - INDICATES STREET LINE HERETOFORE ESTABLISHED AND HEREBY ELIMINATED.
  - INDICATES HIDDEN STREET LINE (WHICH IS A LINE OF STREET BELOW GRADE).
  - INDICATES STREET LINE OR PUBLIC PLACE LINE HEREBY ESTABLISHED.
  - INDICATES PARK HERETOFORE ESTABLISHED AND HEREBY RETAINED.
  - INDICATES PARK HEREBY ESTABLISHED.
  - INDICATES EXISTING SEWER EASEMENT LINE.
  - INDICATES SEWER EASEMENT LINE HEREBY REMOVED.
  - INDICATES SEWER EASEMENT OR CORRIDOR LINE HEREBY DELINEATED.
  - INDICATES EXISTING MILLER HIGHWAY CORRIDOR LINE OR AMTRAK RIGHT-OF-WAY LINE.
  - INDICATES MILLER HIGHWAY EASEMENT LINE HEREBY REMOVED.
  - INDICATES MILLER HIGHWAY CORRIDOR LINE HEREBY DELINEATED OR LIGHT RAIL EASEMENT HEREBY DELINEATED.
  - INDICATES PROPOSED PARKWAY CORRIDOR LINE HEREBY DELINEATED.
  - INDICATES PUBLIC ACCESS OR PUBLIC PEDESTRIAN ACCESS EASEMENT LINE HERETOFORE DELINEATED AND HEREBY RETAINED.
  - INDICATES PUBLIC ACCESS EASEMENT LINE HERETOFORE DELINEATED AND HEREBY ELIMINATED.
  - INDICATES PUBLIC ACCESS EASEMENT LINE HEREBY DELINEATED.
  - INDICATES PROPERTY LINE.
  - INDICATES U.S. PIERHEAD LINE.
  - INDICATES U.S. BULKHEAD LINE.
  - INDICATES PHYSICAL BULKHEAD LINE.
  - INDICATES DIMENSION HERETOFORE ESTABLISHED AND HEREBY RETAINED.
  - INDICATES DIMENSION HEREBY ESTABLISHED.
  - INDICATES DIMENSION HERETOFORE ESTABLISHED AND HEREBY ELIMINATED.
  - INDICATES ELEVATION HERETOFORE ESTABLISHED AND HEREBY RETAINED.
  - INDICATES EXISTING ELEVATION.
  - INDICATES ELEVATION HEREBY ESTABLISHED, AT TOP OF CURB.
  - INDICATES ELEVATION HERETOFORE ESTABLISHED AND HEREBY ELIMINATED.
  - INDICATES TIE-IN DISTANCE HEREBY ESTABLISHED OR DELINEATED.
  - INDICATES DIMENSION OF EXISTING EASEMENT OR EASEMENT HERETOFORE DELINEATED AND HEREBY RETAINED OR CONVEYANCE OR PROPERTY LINE.
  - INDICATES DIMENSION OF EASEMENT HEREBY DELINEATED.
- ELEVATIONS REFER TO DATUM USED BY THE TOPOGRAPHICAL BUREAU, BOROUGH OF MANHATTAN, WHICH IS 2.75 FT. ABOVE UNITED STATES COAST & GEODETIC SURVEY DATUM MEAN SEA LEVEL, SANDY HOOK, NEW JERSEY.

- NOTE 1: STREETS MAPPED ABOVE THE AMTRAK RIGHT OF WAY ARE MAPPED TO A LOWER LIMITING PLANE WHICH IS AT THE UPPER LIMITING PLANE OF THE AMTRAK RIGHT OF WAY, LOCATED 18'-4" ABOVE TOP OF RAIL. SEE TYPICAL SECTIONS ON SHEET 6.
- NOTE 2: PEDESTRIAN ACCESS TO PARK THROUGH PUBLIC PLACE TO BE PROVIDED IN THIS AREA.
- NOTE 3: THE MAPPED STRUCTURE OF THE MILLER HIGHWAY VIADUCT IS SHOWN ON MAP ACC. NO. 25692.
- NOTE 4: EASEMENTS, CORRIDORS, PROPERTY LINES AND CONVEYANCE DIMENSIONS ARE SHOWN FOR INFORMATIONAL PURPOSES ONLY AND ARE NOT FORMALLY PART OF THE OFFICIAL CITY MAP.
- NOTE 5: THERE ARE NO DEVELOPMENT RIGHTS ASSOCIATED WITH THE PUBLIC PLACE SHOWN ON THIS MAP.
- NOTE 6: RIVERSIDE DRIVE SOUTH AS ESTABLISHED ON THIS MAP AND IN DEPARTMENT OF CITY PLANNING REPORTS AND OTHER DOCUMENTS IS ALSO KNOWN AS RIVERSIDE BOULEVARD.

**REFERENCE MAPS**

- ACC 30144 DATED 10-29-1992 (CPC NO. C920460 MMM)
- ACC 30124 DATED 9-6-1989 (CPC NO. C890856 MMM)
- ACC 29850 DATED 2-26-1965 (CP-18847)
- ACC 29842 DATED 9-21-1964 (CP-18683)
- ACC 29809 DATED 4-08-1963 (CP-17910)
- ACC 29586 DATED 1-29-1959 (CP-14692)
- ACC 29581 DATED 3-16-1959 (CP-14755)
- ACC 28868 DATED 7-7-1947 (CP-5072)
- ACC 25692 APPROVED 1-16-1929
- ACC 30094A APPROVED 3-15-1927
- ACC 28416 DATED 1-9-1941 (CP-1854)
- ACC 28436 DATED 10-8-1942 (CP-2508)
- ACC 28698 DATED 10-3-1941 (CP-2352)

CITY OF NEW YORK  
 OFFICE OF THE PRESIDENT BOROUGH OF MANHATTAN  
**MAP ACC. NO. 30140**  
 SHOWING A CHANGE IN THE CITY MAP  
 BY ELIMINATING, DISCONTINUING AND CLOSING  
 VARIOUS STREETS, BY ELIMINATING THE  
 LINES OF THE WEST 70th STREET VIADUCT,  
 BY ESTABLISHING  
 THE LINES AND GRADES OF A NEW STREET SYSTEM,  
 THE LINES OF A PARK AND A PUBLIC PLACE,  
 BY CHANGING THE LEGAL GRADES,  
 AND BY MODIFYING AND/OR DELINEATING  
 VARIOUS EASEMENTS/CORRIDORS  
 ALL WITHIN AN AREA GENERALLY BOUNDED BY  
 WEST 59th STREET, WEST END AVENUE, WEST 72ND STREET,  
 AND THE U.S. PIERHEAD LINE OF THE HUDSON RIVER  
 IN CONNECTION WITH THE RIVERSIDE SOUTH DEVELOPMENT PROJECT.

*Ruth Messinger*  
 RUTH MESSINGER  
 PRESIDENT, BOROUGH OF MANHATTAN  
*Richard Herschlag*  
 RICHARD HERSCHLAG, P.E.  
 BOROUGH ENGINEER  
 OFFICE OF THE MANHATTAN BOROUGH PRESIDENT

DATED: MAY 15, 1992      SCALE: 1" = 50'

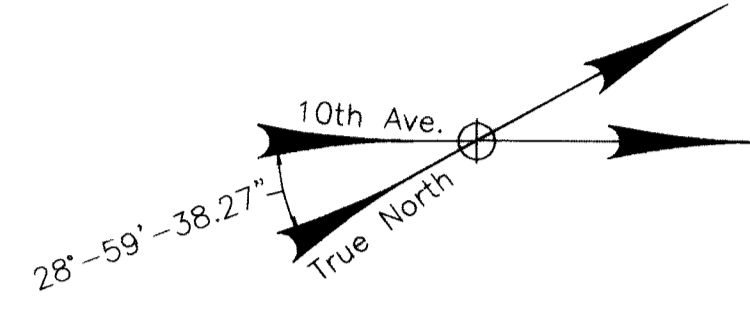
I, ROSA R. ROMERO, SECRETARY OF THE CITY PLANNING COMMISSION, DO HEREBY CERTIFY THAT THIS IS ONE OF 10 SIMILAR MAPS ADOPTED BY THE CITY PLANNING COMMISSION ON THE 26TH DAY OF OCTOBER, 1992 (CAL No. 1) AND SUBSEQUENTLY ADOPTED BY THE CITY COUNCIL ON DECEMBER 17, 1992 (RESOLUTION No. 1123) AND THAT THESE MAPS WERE FILED ON THE DATE OF THIS CERTIFICATION AND WILL TAKE EFFECT ON THE FOLLOWING DAY.  
 DATE: 12-11-2000  
*Rosa R. Romero*  
 SECRETARY CITY PLANNING COMMISSION

PREPARED BY: PHILIP HABIB & ASSOC.      SURVEYOR: EARL B. LOWELL - S.P. BELCHER, INC.

UNITED STATES PIERHEAD LINE APPROVED BY THE SECRETARY OF WAR, JULY 31, 1941

HUDSON RIVER

STREET

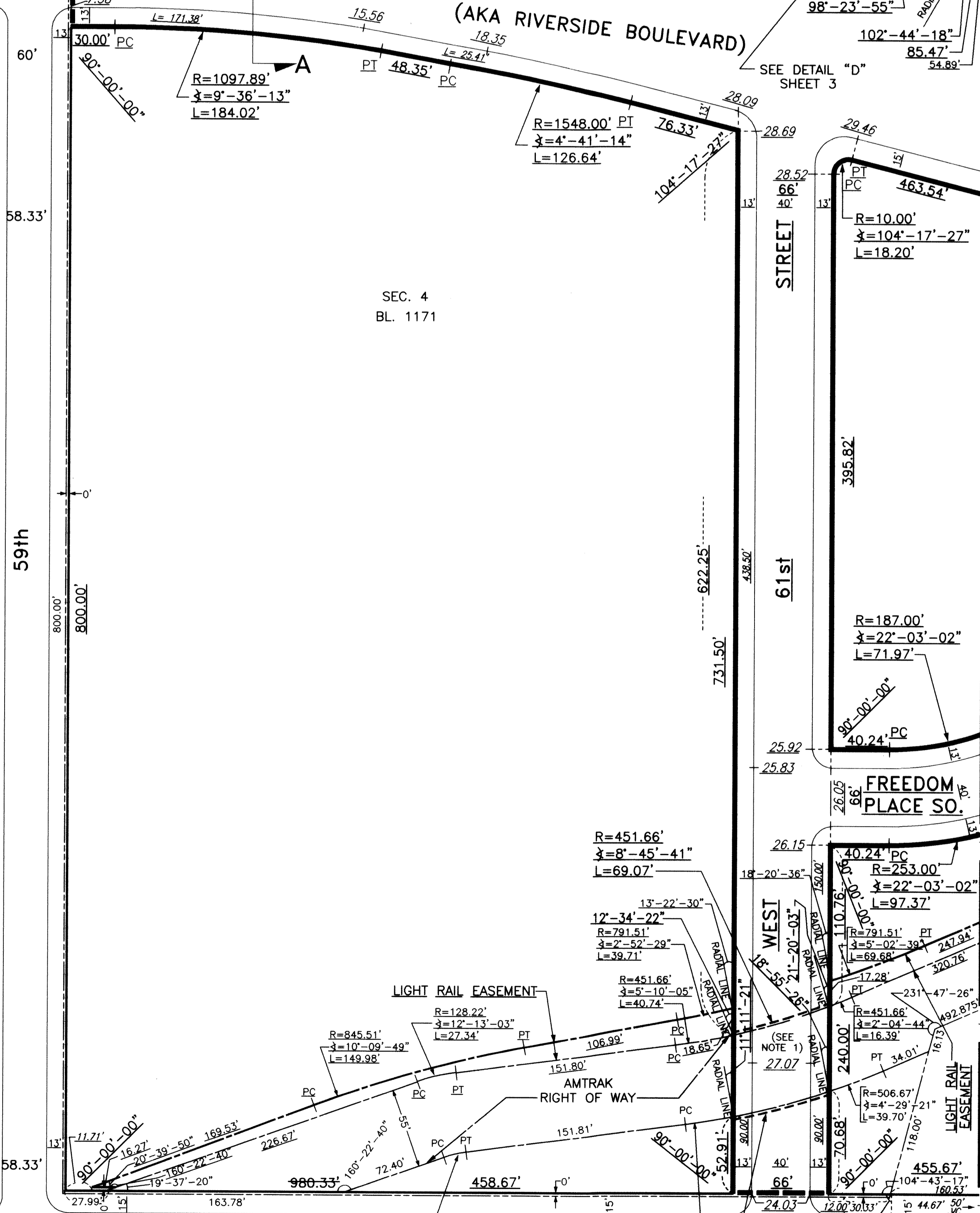
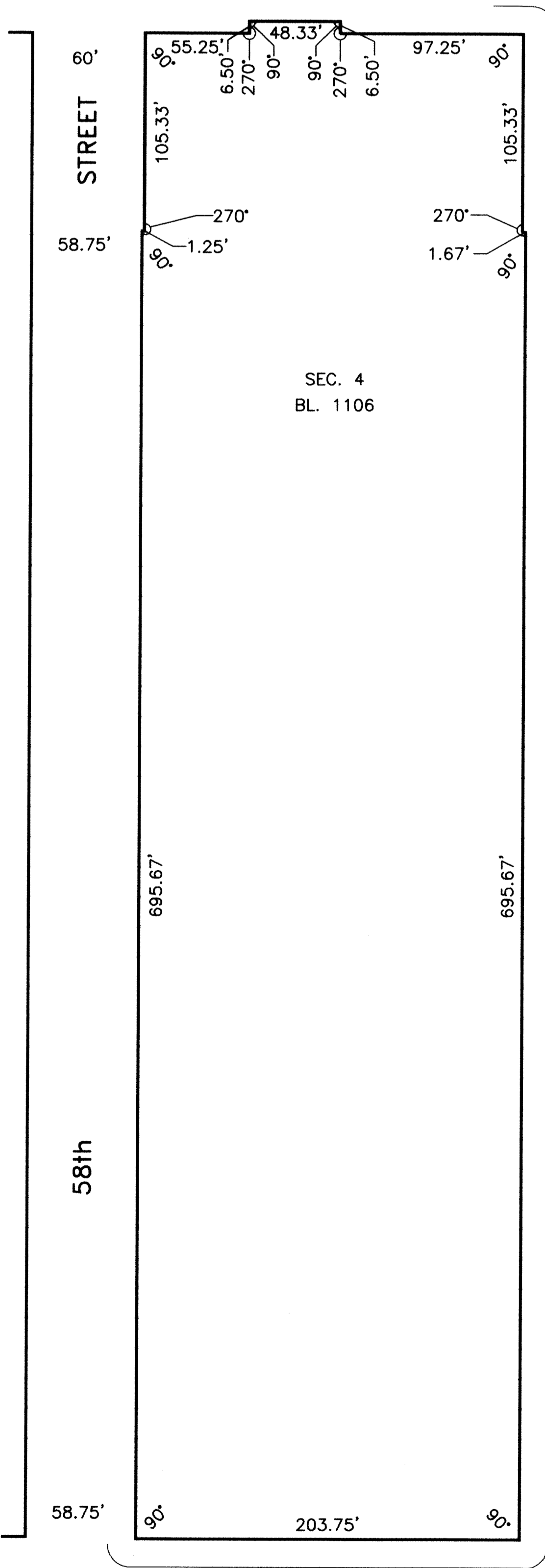


SCALE: 1"=50'

MARGINAL STREET WHARF OR PLACE

RIVERSIDE DRIVE (AKA RIVERSIDE BOULEVARD) SOUTH

100' TWELFTH AVENUE (SEE NOTE 2)



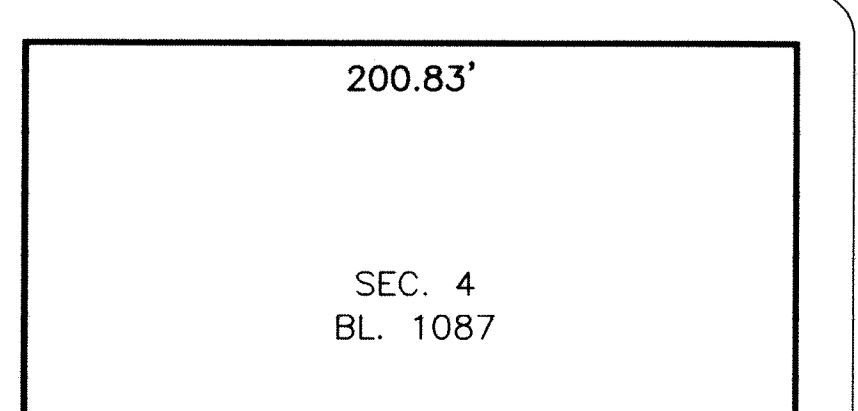
11th AVENUE WEST

100' WEST

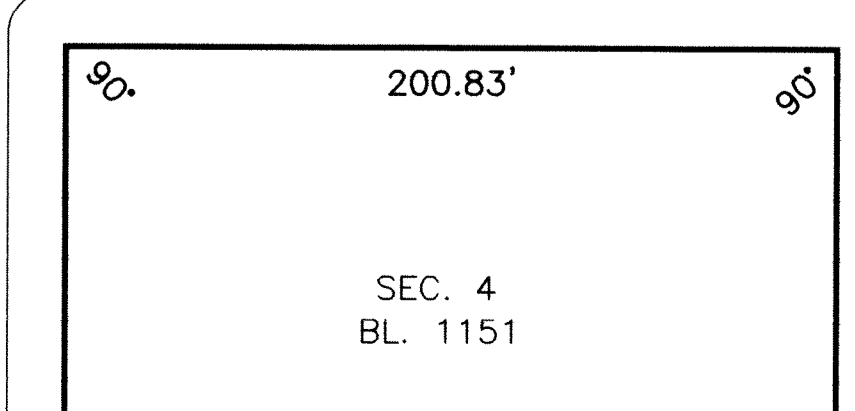
END

61st AVENUE

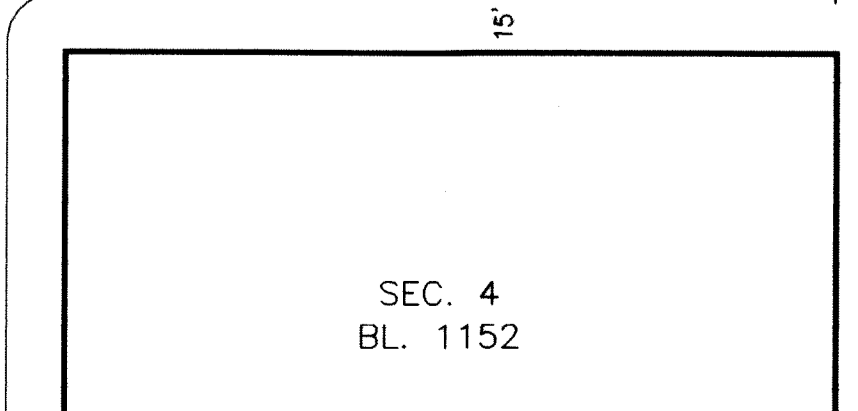
WEST



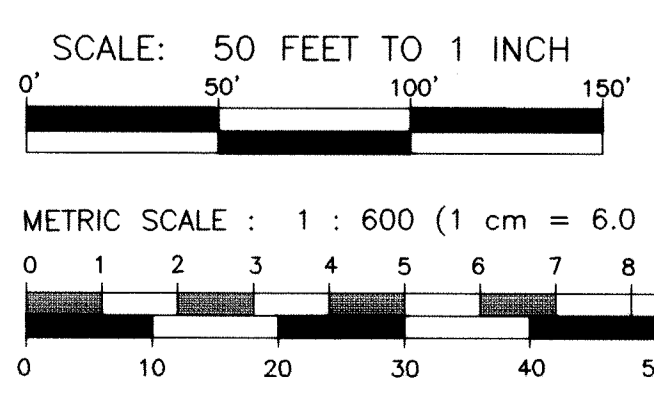
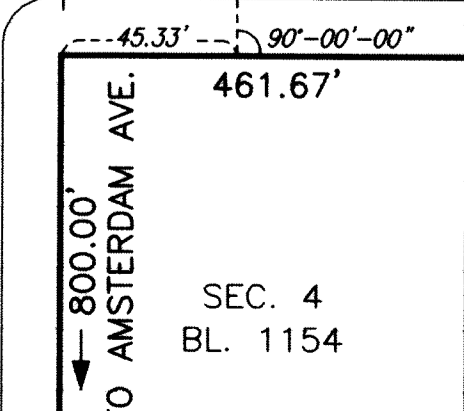
WEST



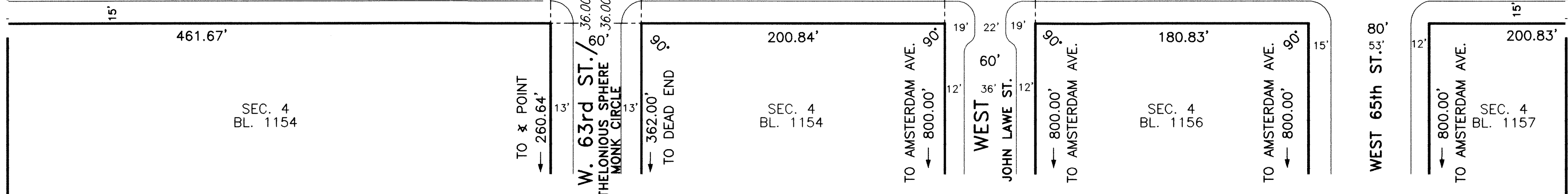
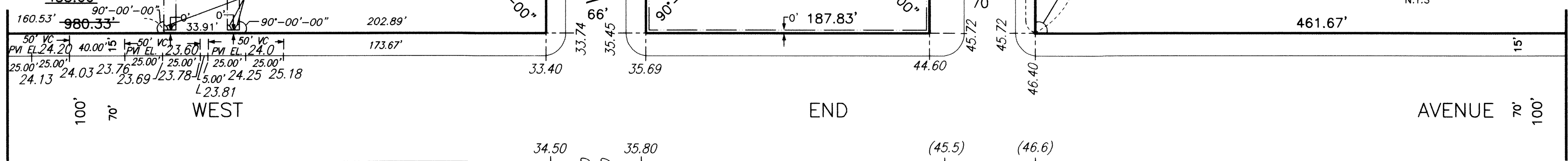
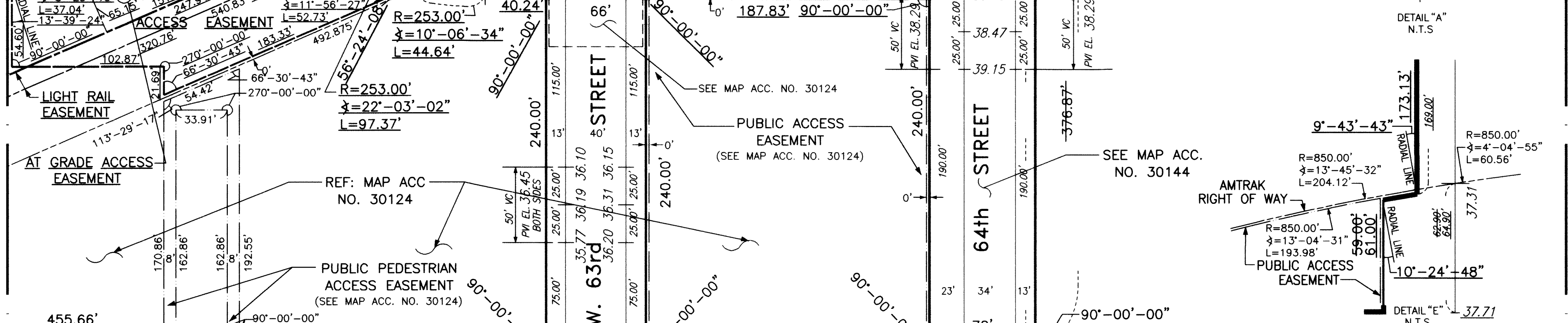
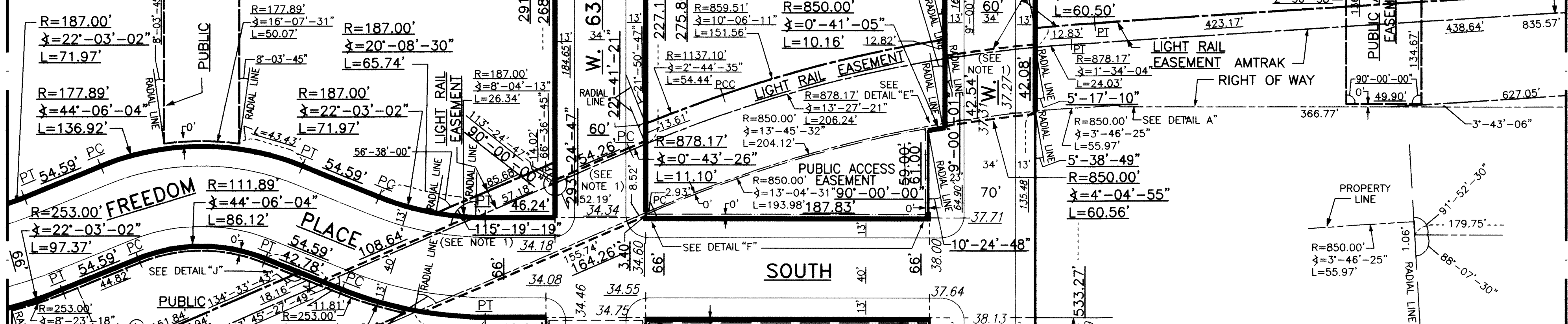
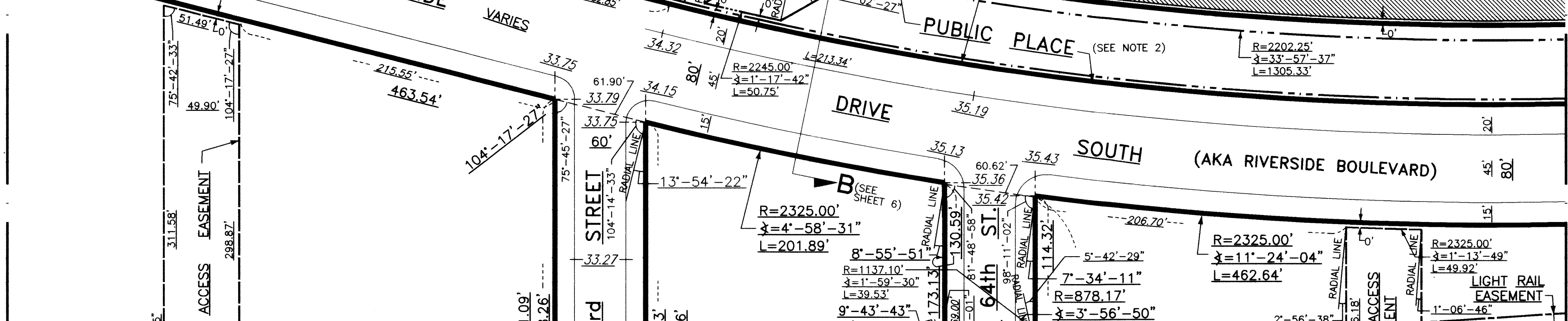
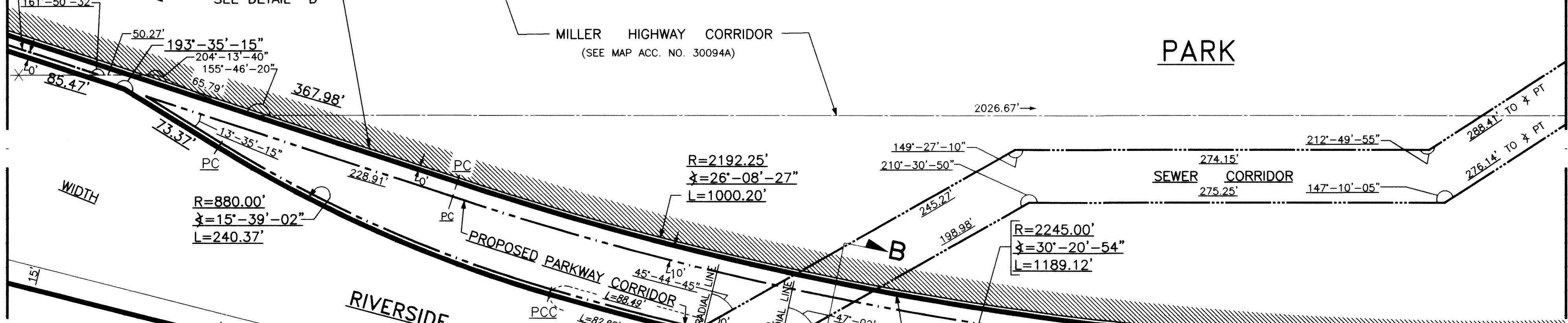
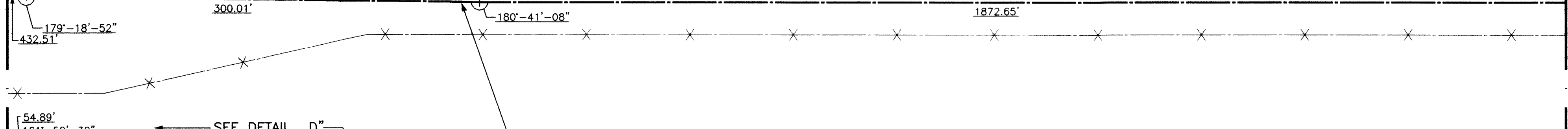
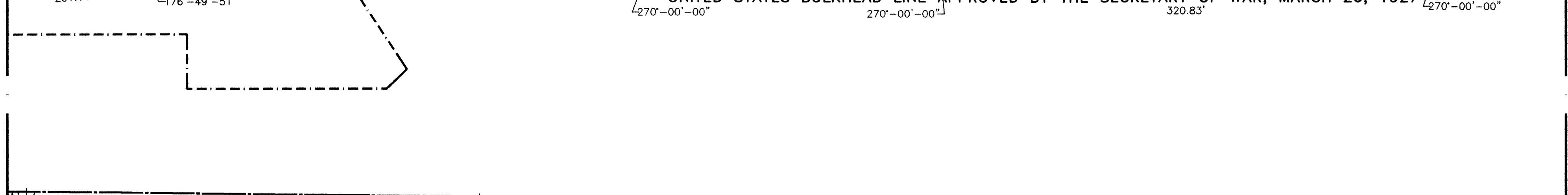
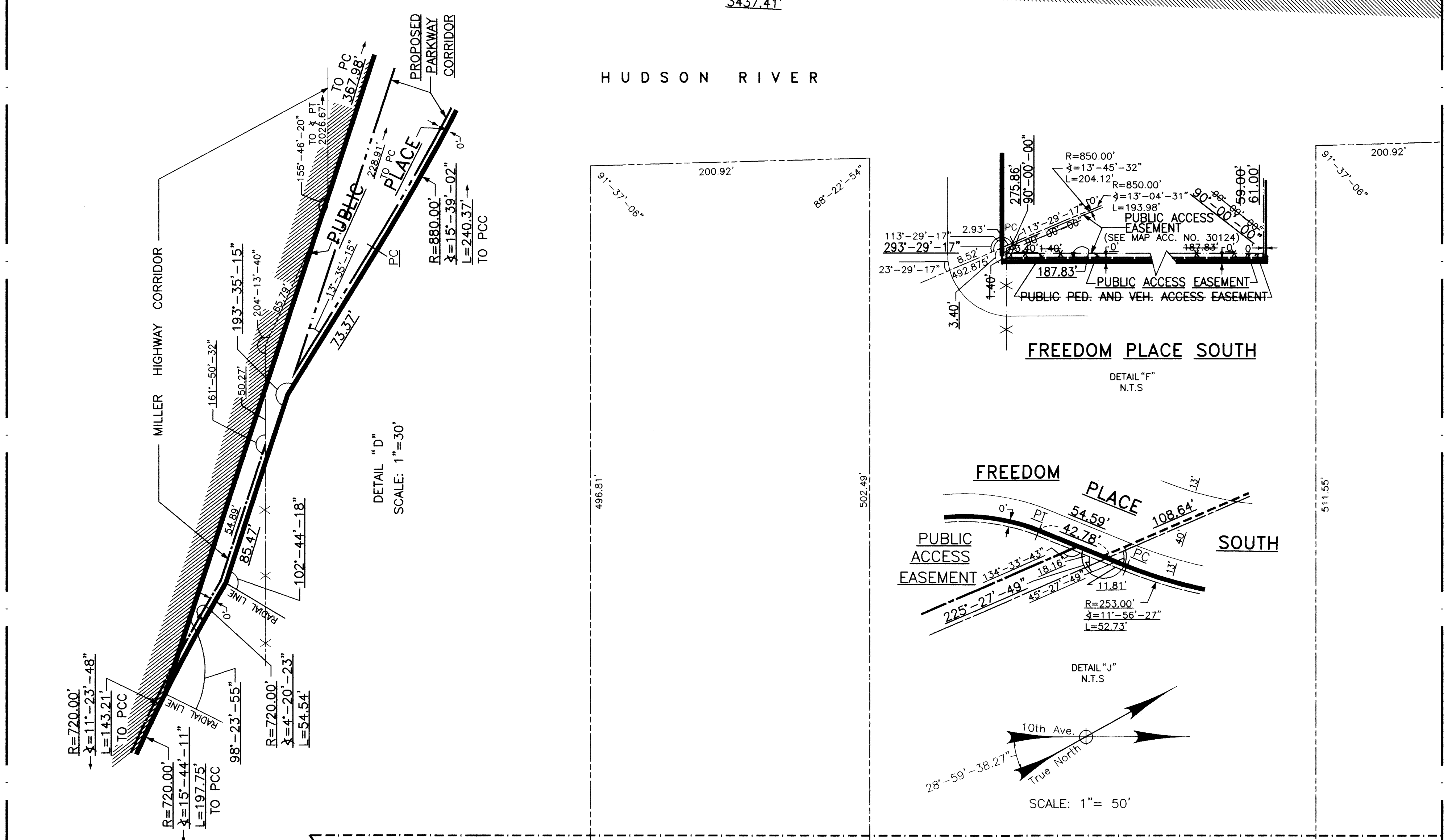
WEST



WEST

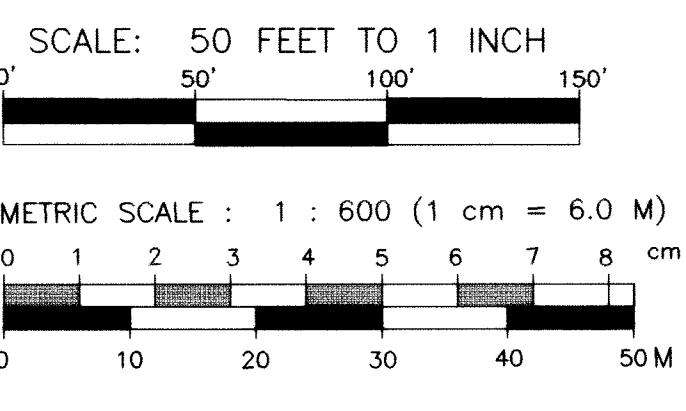






MATCH LINE SEE SHEET 2

MATCH LINE SEE SHEET 4



SEC. 4 BL. 1154

SEC. 4 BL. 1154

SEC. 4 BL. 1156

SEC. 4 BL. 1157



UNITED STATES PIERHEAD LINE APPROVED BY THE SECRETARY OF WAR, JULY 31, 1941

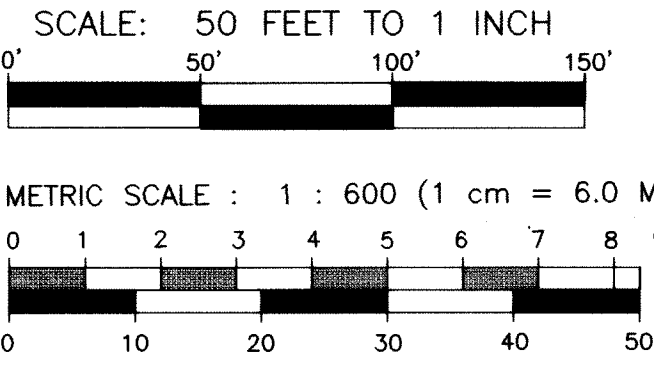
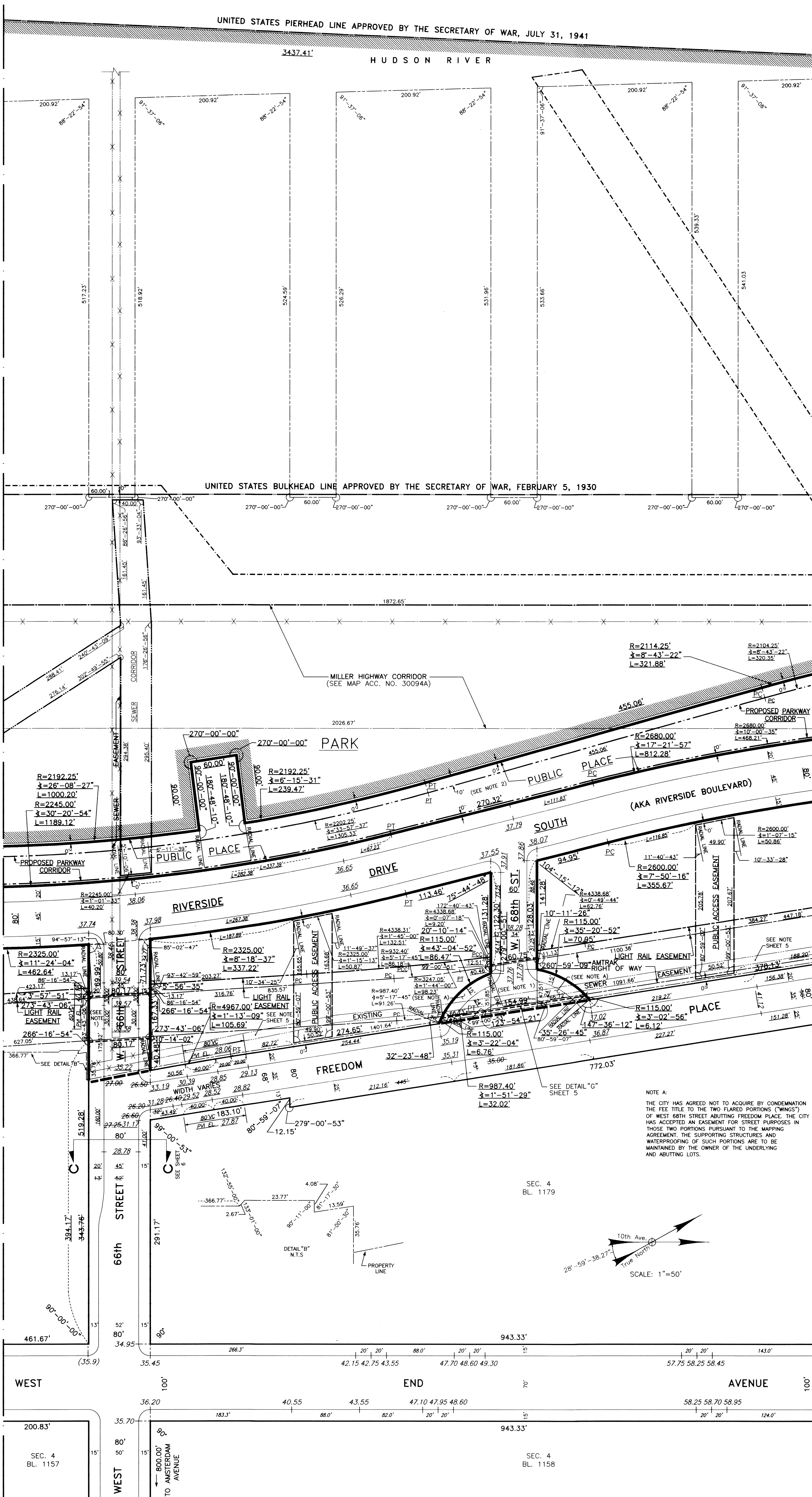
HUDSON RIVER

3437.41'

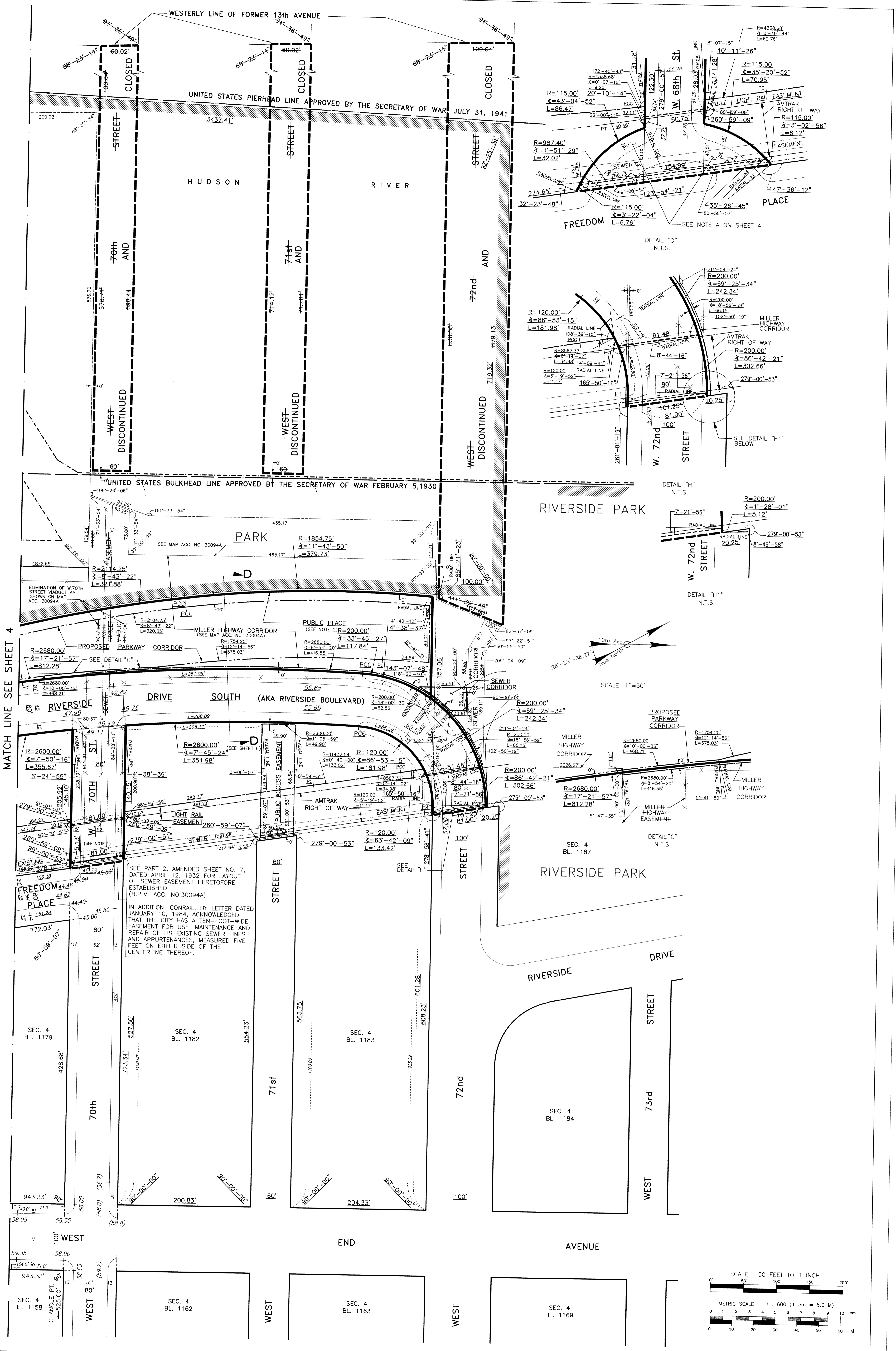
UNITED STATES BULKHEAD LINE APPROVED BY THE SECRETARY OF WAR, FEBRUARY 5, 1930

MATCH LINE SEE SHEET 3

MATCH LINE SEE SHEET 5







MATCH LINE SEE SHEET 4

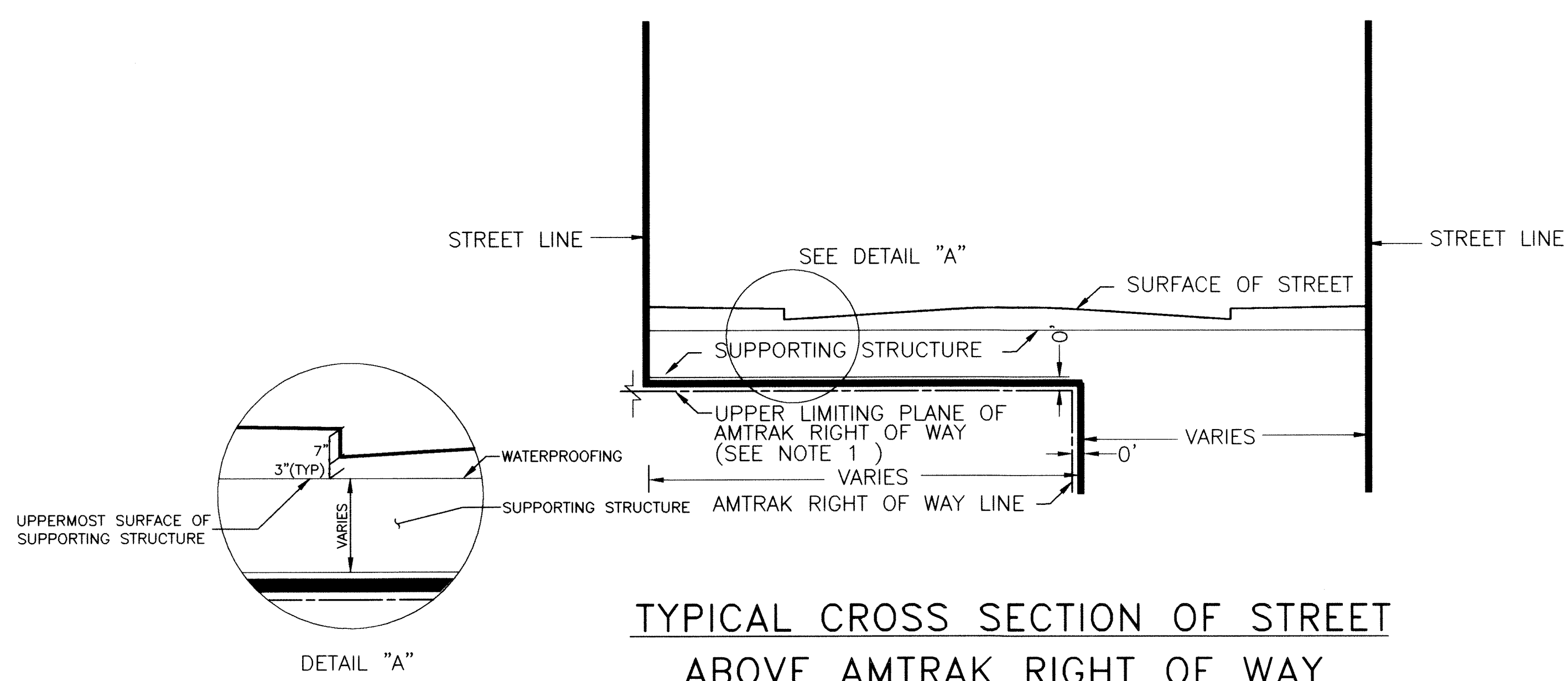
DETAIL "G"  
N.T.S.

DETAIL "H"  
N.T.S.

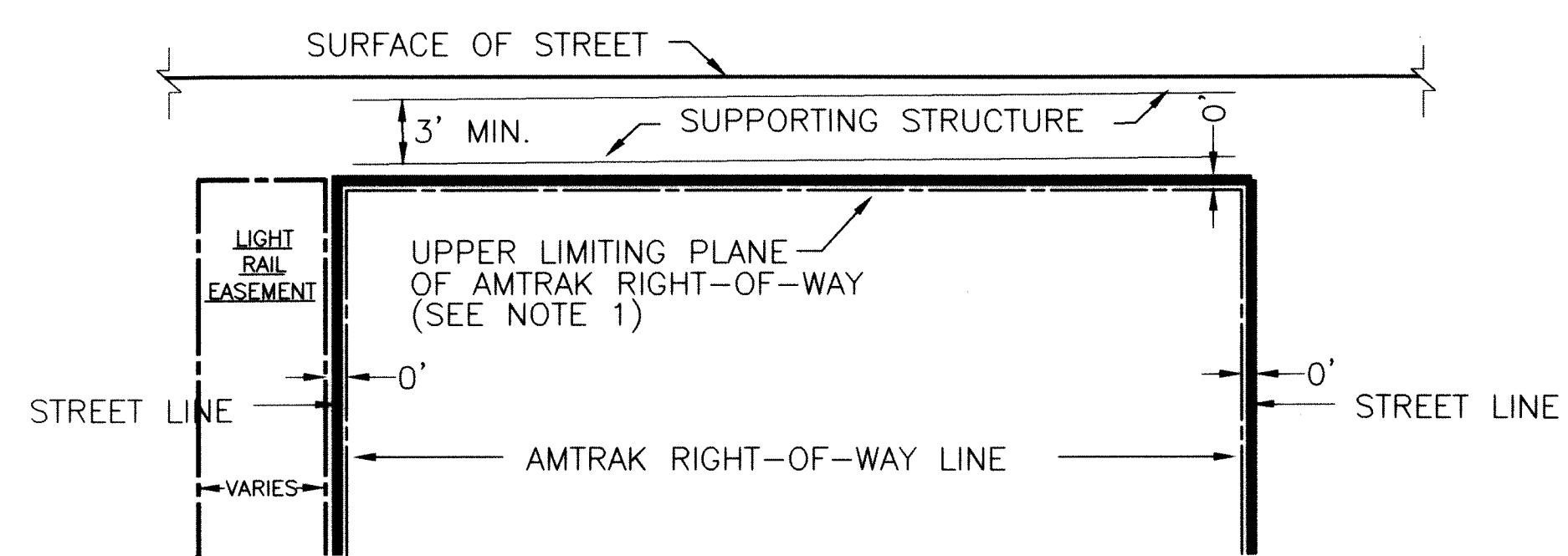
DETAIL "H1"  
N.T.S.

DETAIL "C"  
N.T.S.

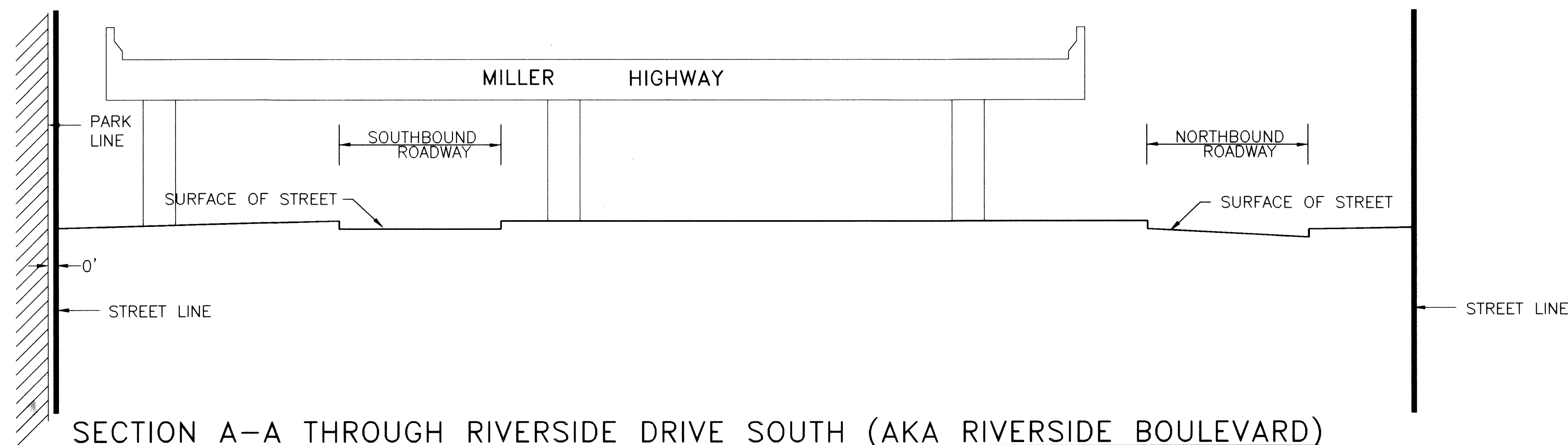




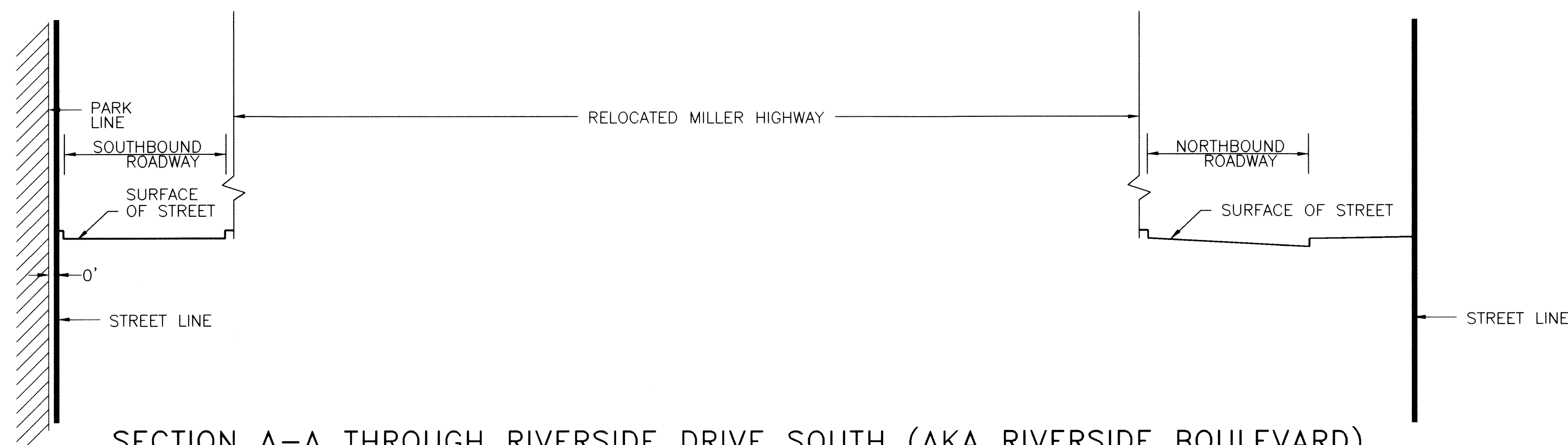
TYPICAL CROSS SECTION OF STREET ABOVE AMTRAK RIGHT OF WAY  
N.T.S.



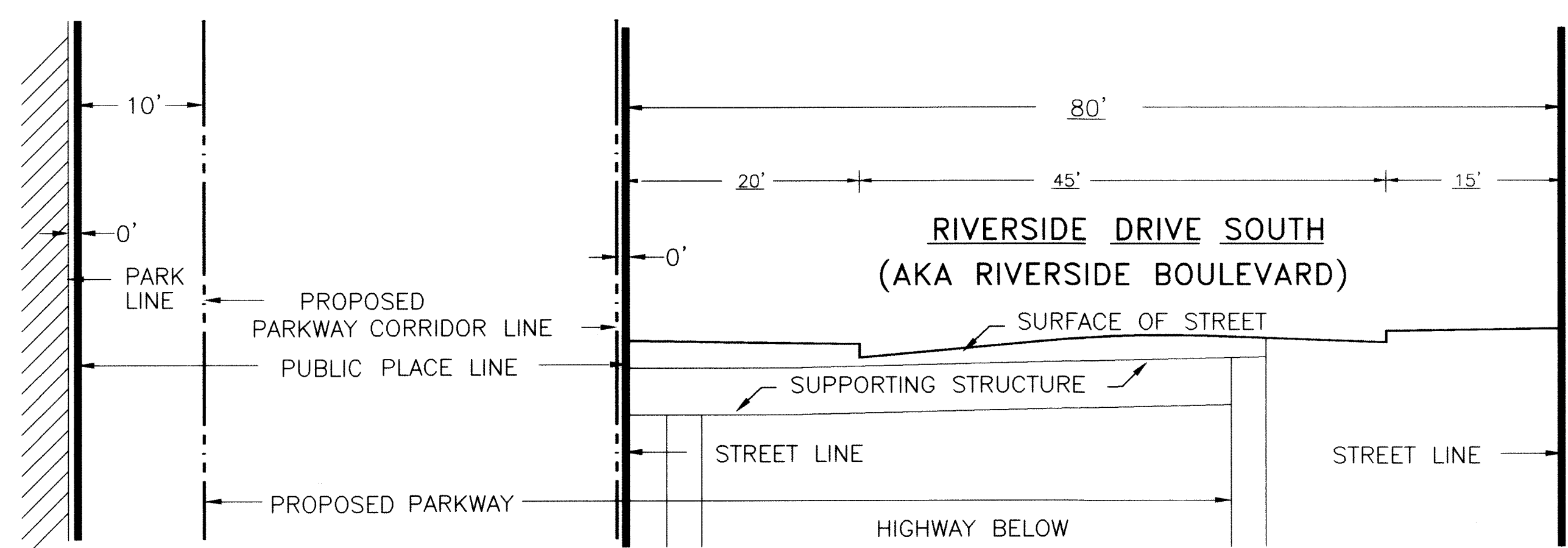
TYPICAL CROSS SECTION ALONG CENTERLINE OF STREET ABOVE AMTRAK RIGHT OF WAY  
N.T.S.



SECTION A-A THROUGH RIVERSIDE DRIVE SOUTH (AKA RIVERSIDE BOULEVARD)  
INTERIM CONDITION  
N.T.S.

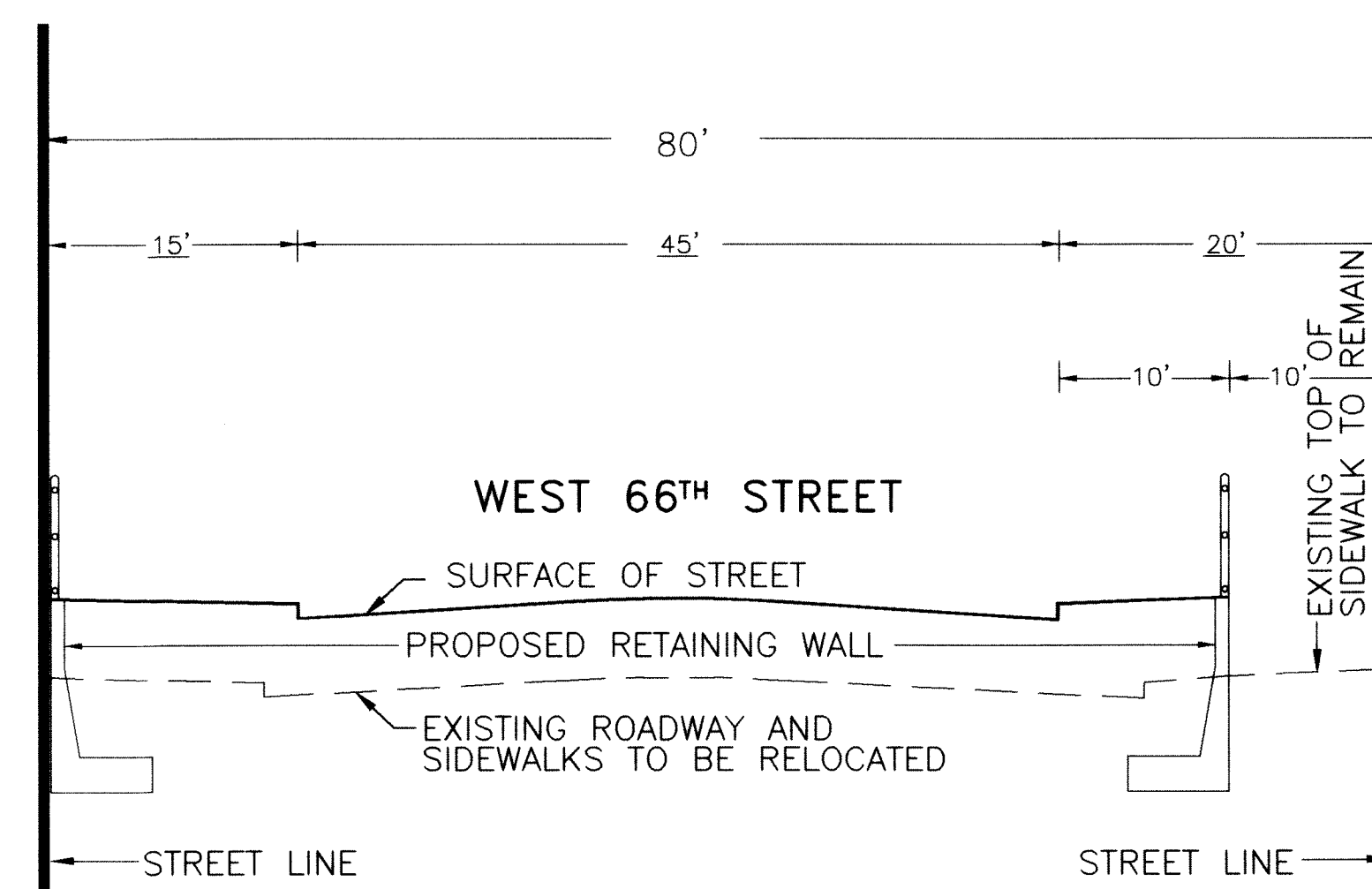


SECTION A-A THROUGH RIVERSIDE DRIVE SOUTH (AKA RIVERSIDE BOULEVARD)  
FINAL CONDITION  
N.T.S.



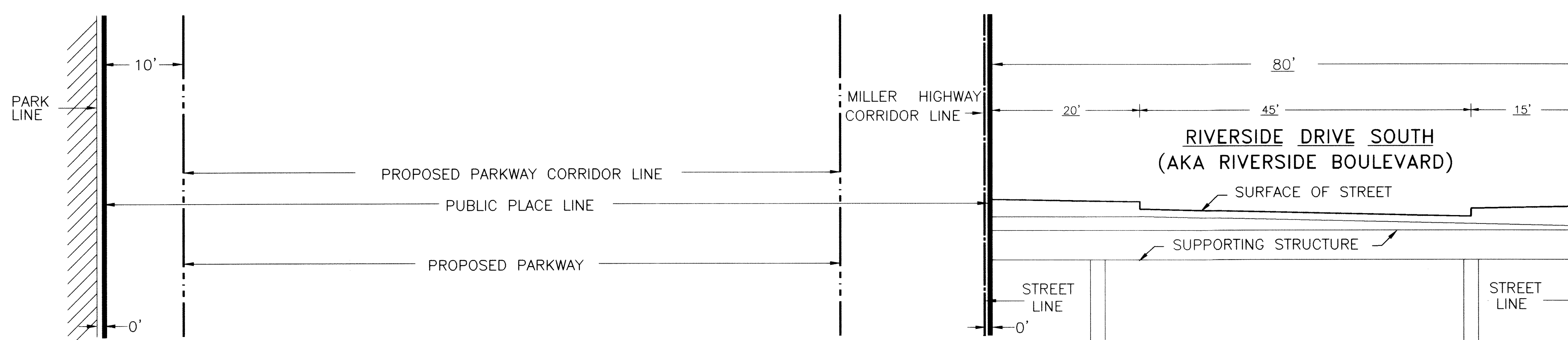
NOTE: PUBLIC PLACE WEST OF PARKWAY CORRIDOR RESERVED FOR MINOR ALIGNMENT CHANGES, FOUNDATIONS, VENTILATION DUCTS AND OTHER HIGHWAY APPURTENANCES.

SECTION B-B ACROSS RIVERSIDE DRIVE SOUTH (AKA RIVERSIDE BOULEVARD)  
N.T.S.



NOTE: RAILINGS ARE DESCRIPTIVE ONLY SUBJECT TO N.Y.C.D.O.T. APPROVAL.

SECTION C-C ACROSS WEST 66TH STREET  
N.T.S.



NOTE: PUBLIC PLACE WEST OF PARKWAY CORRIDOR RESERVED FOR MINOR ALIGNMENT CHANGES, FOUNDATIONS, VENTILATION DUCTS AND OTHER HIGHWAY APPURTENANCES.

SECTION D-D ACROSS RIVERSIDE DRIVE SOUTH (AKA RIVERSIDE BOULEVARD)  
N.T.S.