

SEE EXAGGERATED SKETCH

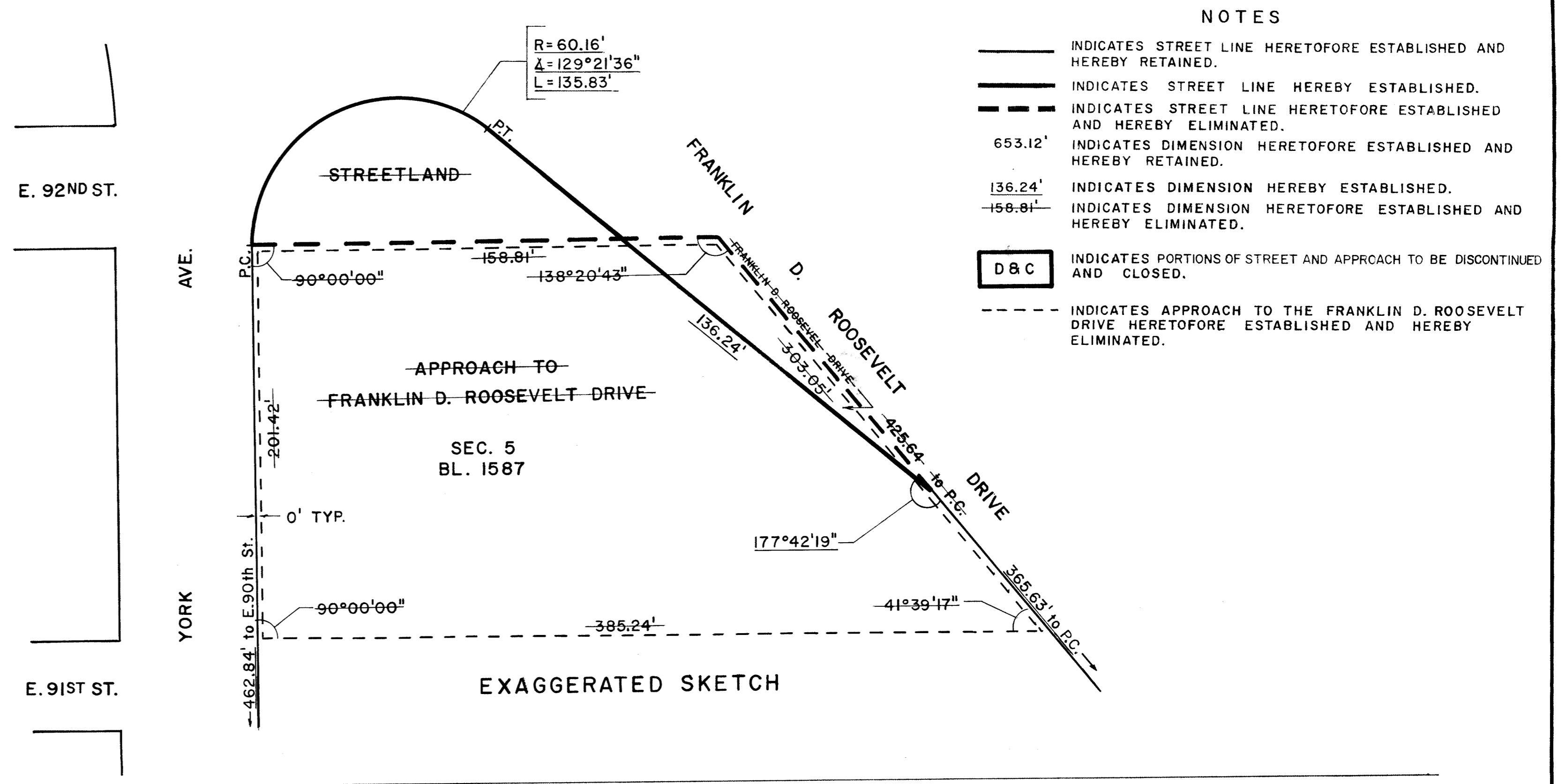
REFERENCE MAPS:  
 ACC. No. 27899 - CP 870  
 ACC. No. - CP 1260  
 ACC. No. 29333 - CP 10970  
 ACC. No. 27791

I, LOIS McDANIEL, SECRETARY OF THE CITY PLANNING COMMISSION DO HEREBY CERTIFY THAT THIS MAP IS ONE OF EIGHT SIMILAR MAPS APPROVED BY THE CITY PLANNING COMMISSION ON THE 6th DAY OF FEBRUARY, 1991 (CPL No. 17) WHICH ACTION COMPRISED FINAL APPROVAL, AND THAT THESE MAPS WERE FILED ON THE DATE OF THIS CERTIFICATION AND WILL TAKE EFFECT ON THE FOLLOWING DAY.  
 DATED: NEW YORK May 28, 1993

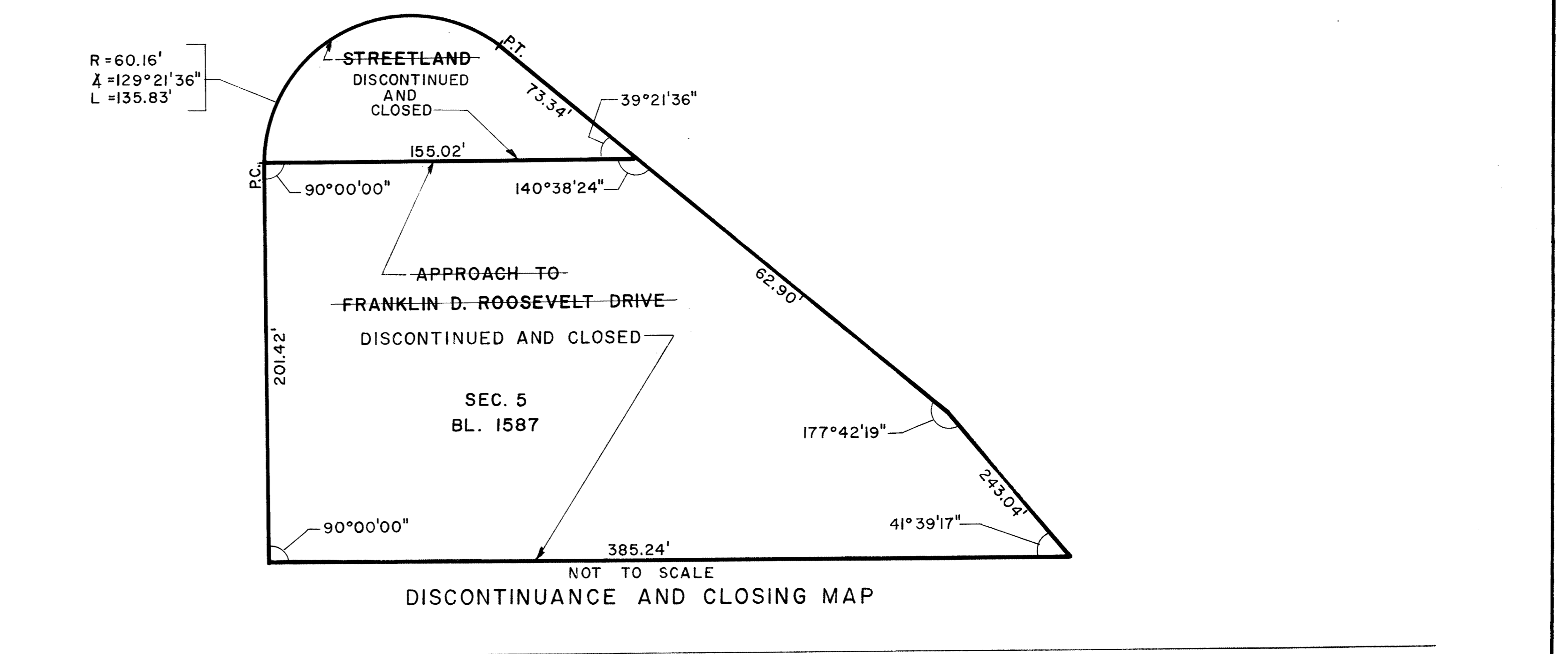
*Lois McDaniel*  
 SECRETARY, CITY PLANNING COMMISSION

DRAWN BY: RC  
 CHECKED BY: \_\_\_\_\_

CPC NO. 900680MMM



- NOTES
- INDICATES STREET LINE HERETOFORE ESTABLISHED AND HEREBY RETAINED.
  - INDICATES STREET LINE HEREBY ESTABLISHED.
  - - - INDICATES STREET LINE HERETOFORE ESTABLISHED AND HEREBY ELIMINATED.
  - 653.12' INDICATES DIMENSION HERETOFORE ESTABLISHED AND HEREBY RETAINED.
  - 136.24' INDICATES DIMENSION HEREBY ESTABLISHED.
  - 156.81' INDICATES DIMENSION HERETOFORE ESTABLISHED AND HEREBY ELIMINATED.
  - D & C INDICATES PORTIONS OF STREET AND APPROACH TO BE DISCONTINUED AND CLOSED.
  - - - INDICATES APPROACH TO THE FRANKLIN D. ROOSEVELT DRIVE HERETOFORE ESTABLISHED AND HEREBY ELIMINATED.



CITY OF NEW YORK  
 OFFICE OF THE PRESIDENT BOROUGH OF MANHATTAN  
 TOPOGRAPHICAL BUREAU

**30135**  
**MAP ACC. NO. 30130**

SHOWING A CHANGE IN THE CITY MAP  
 BY  
 ELIMINATING, DISCONTINUING AND CLOSING  
 A PORTION OF THE APPROACH TO  
 THE FRANKLIN D. ROOSEVELT DRIVE AND STREETLAND  
 AND BY MODIFYING THE WESTERLY LINE OF  
 THE FRANKLIN D. ROOSEVELT DRIVE  
 ALL WITHIN THE AREA BOUNDED BY  
 YORK AVE., EAST 90TH STREET, EAST 92ND STREET, AND  
 THE FRANKLIN D. ROOSEVELT DRIVE  
 IN THE  
 BOROUGH OF MANHATTAN

DATED: SEPTEMBER 18, 1990 SCALE: AS SHOWN

*Victor A. Gordon*  
 PRESIDENT, BOROUGH OF MANHATTAN  
 DIRECTOR, TOPOGRAPHICAL BUREAU

"RENUMBERED ACC. NO. 30135 AS PER LETTER FROM BOROUGH PRESIDENT'S CHIEF ENGINEER DATED SEP. 2, 1992"

30135  
 ACC. NO. 30130