

CITY OF NEW YORK
OFFICE OF THE BOROUGH PRESIDENT OF MANHATTAN
TOPOGRAPHICAL BUREAU

MAP ACC. NO. 30127

SHOWING

THE ELIMINATION

OF

A PORTION OF EAST 47TH STREET

BETWEEN

FIRST AVENUE AND SECOND AVENUE

AND

THE ESTABLISHMENT OF A PARK ADDITION

TO

HAMMARSKJOLD PLAZA

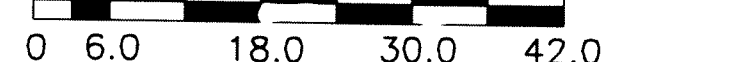
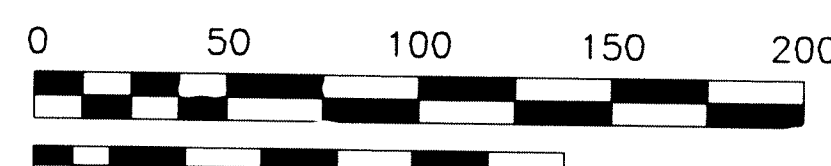
AND

THE ADJUSTMENT OF GRADES AND BLOCK DIMENSIONS

DATED: DECEMBER 12, 1994

[Signature]
COMMISSIONER, DEPARTMENT OF
PARKS AND RECREATION

ENGLISH SCALE: 1 INCH=50 FEET



METRIC SCALE: 1 CM=6.00 METERS

[Signature]
PRESIDENT, BOROUGH OF MANHATTAN

[Signature]
CONSULTING ENGINEER

NOTES

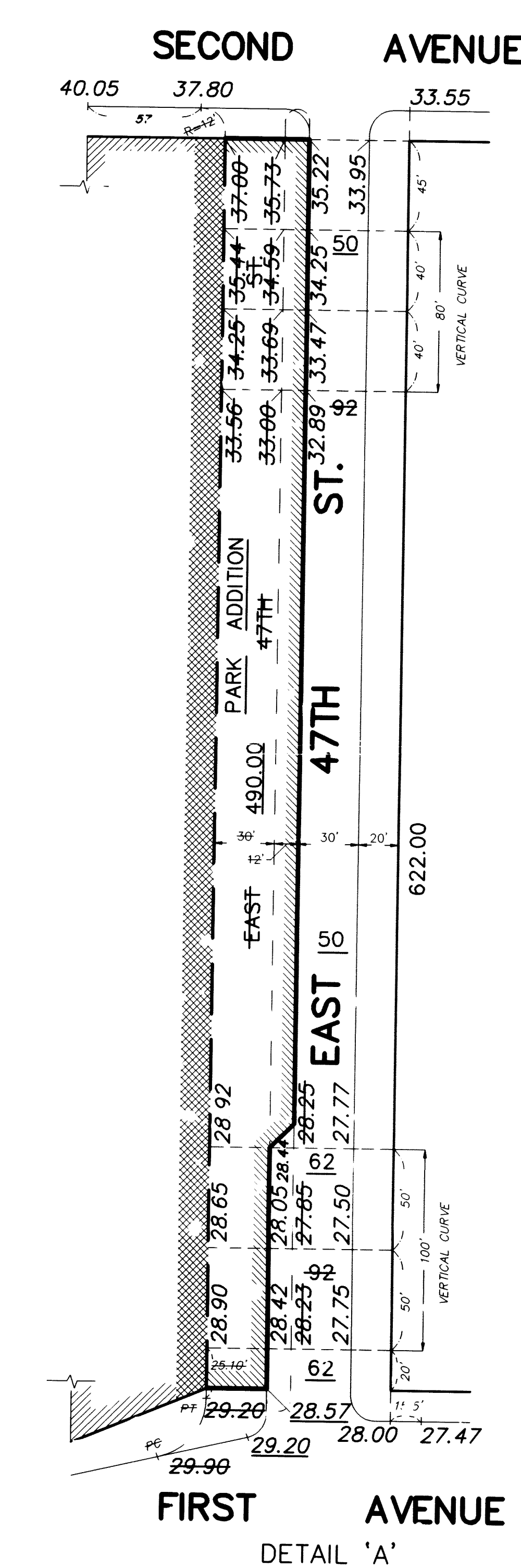
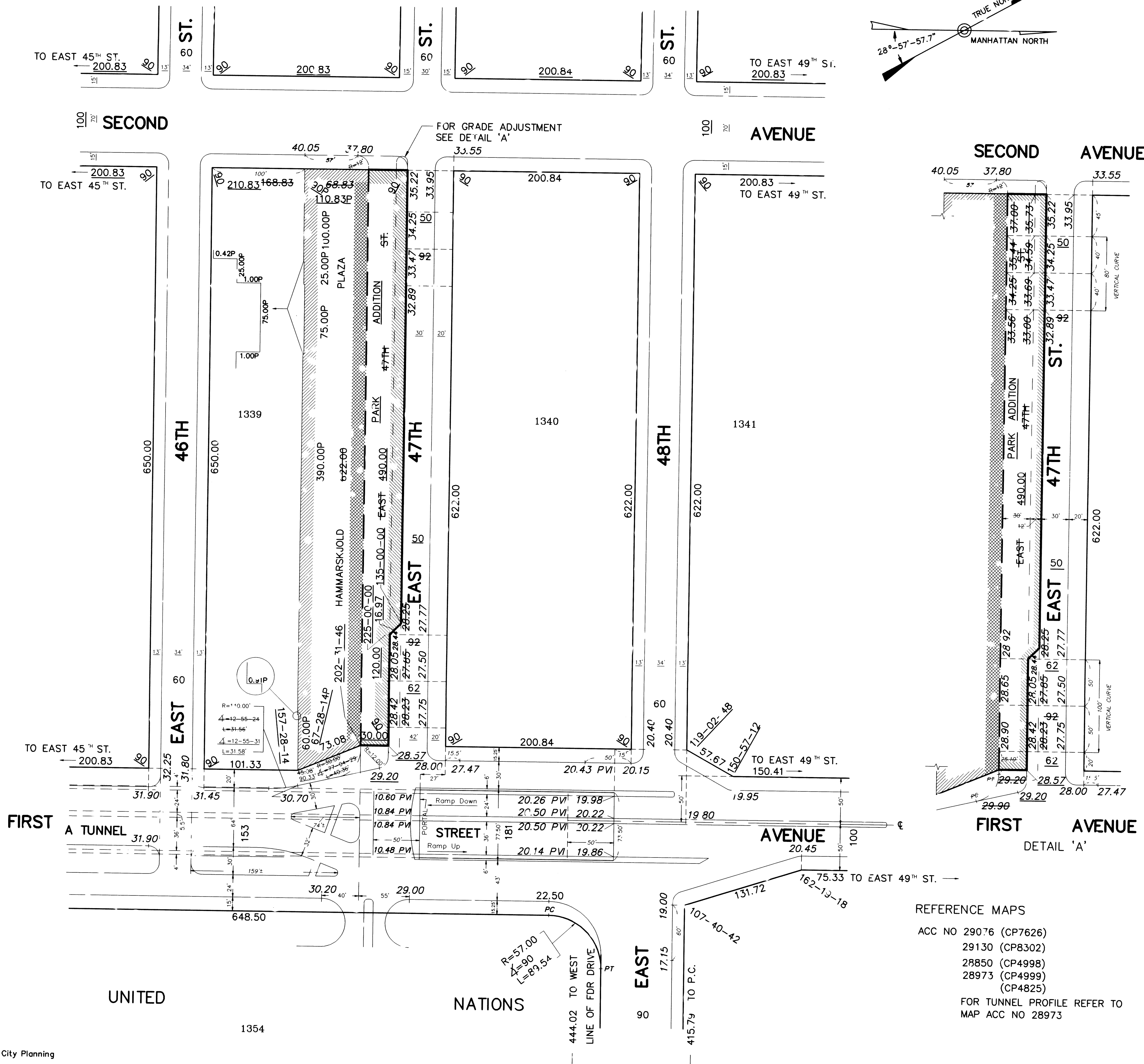
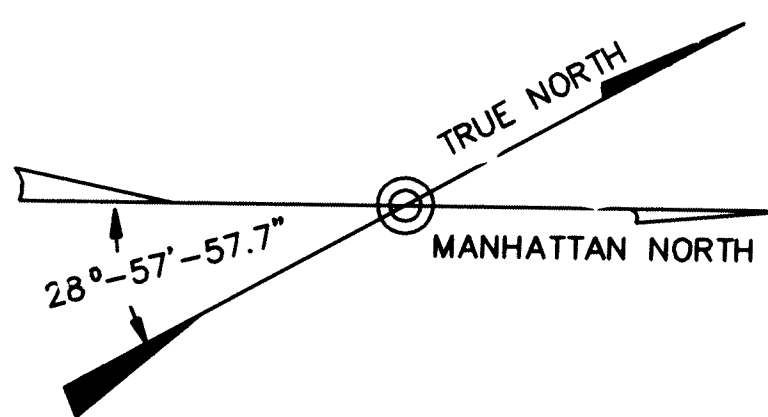
- - - - - Indicates street line heretofore established and hereby retained.
- — — — — Indicates street line hereby established.
- - - - - Indicates street line heretofore established and hereby eliminated.
- - - - - Indicates roadway and sidewalk treatment hereby established or heretofore established and hereby retained.
- - - - - Indicates roadway and sidewalk treatment heretofore established and hereby eliminated.
- 101.33 Indicates dimension heretofore established and hereby retained.
- 100.83 Indicates dimension hereby established.
- 168.83 Indicates dimension heretofore established and hereby eliminated.
- 390.00P Indicates Park dimension heretofore established and hereby retained.
- 110.83P Indicates Park dimension hereby established.
- 33.95 Indicates elevation heretofore established and hereby retained.
- 29.20 Indicates elevation hereby established.
- 28.23 Indicates elevation heretofore established and hereby eliminated.
- 50' Indicates tie-in distances heretofore established and hereby retained.
- 50' Indicates tie-in distances hereby established.
- 50' Indicates a tie-in distance heretofore established and hereby eliminated.
- 15' Indicates roadway and sidewalk treatment dimension heretofore established and hereby retained.
- 15' Indicates roadway and sidewalk treatment dimension hereby established.
- 30' Indicates roadway and sidewalk treatment dimension heretofore established and hereby eliminated.
- - - - - Indicates extension lines shown for tie-in dimensions.
- P.C. Indicates Point of Curvature.
- P.T. Indicates Point of Tangency.
- 20.50 PVI Indicates elevation at the point of vertical intersection of the two vertical tangents heretofore established and hereby retained.
- Elevations refer to the datum of the Borough of Manhattan, which is 2.750 feet (0.838 meters) above the U.S.C. & G. Survey datum at Sandy Hook, New Jersey.
- Elevations are taken at top of curb unless otherwise noted.
- Sidewalk dimensions shown are theoretically established for grade determination purposes only.
- [PARK] Indicates Park heretofore established and hereby retained.
- [PARK OR PARK ADDITION] Indicates Park or Park Addition hereby established.
- [PARK] Indicates Park heretofore established and hereby eliminated.

I, LOIS McDANIEL, SECRETARY OF THE CITY PLANNING COMMISSION, DO HEREBY CERTIFY THAT THIS MAP IS ONE OF NINE SIMILAR MAPS APPROVED BY THE CITY PLANNING COMMISSION ON THE 7th DAY OF JUNE 1994. CALENDAR NO. 20, WHICH ACTIONS COMPRISED FINAL APPROVAL AND THAT THESE MAPS WERE FILED ON THE DATE OF THIS CERTIFICATION AND WILL TAKE EFFECT ON THE FOLLOWING DAY.
DATE: NEW YORK October 11, 1994
[Signature]
SECRETARY, CITY PLANNING COMMISSION

© Copyright 1994 Department of City Planning

BPM. MAP ACC. NO. 30127 (CPC. NO. 900438MMM)

DRAWER 40



REFERENCE MAPS
ACC NO 29076 (CP7626)
29130 (CP8302)
28850 (CP4998)
28973 (CP4999)
(CP4825)
FOR TUNNEL PROFILE REFER TO
MAP ACC NO 28973

BPM. MAP ACC. NO. 30127 (CPC. NO. 900438MMM)

ACC 30127