

CITY OF NEW YORK
OFFICE OF THE BOROUGH PRESIDENT OF MANHATTAN
TOPOGRAPHICAL BUREAU

MAP ACC. NO. 30121

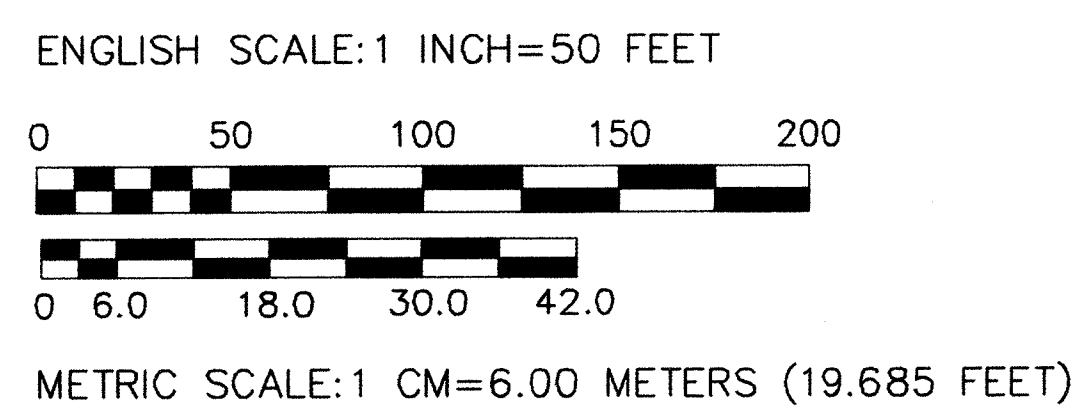
SHOWING
**THE WIDENING
OF
THE FORDHAM BRIDGE
AND
BRIDGE APPROACHES**

FROM
THE INTERSECTION OF
WEST 207TH STREET AND 9TH AVENUE IN THE BOROUGH OF MANHATTAN
TO
THE INTERSECTION OF
WEST FORDHAM ROAD AND EXTERIOR STREET IN THE BRONX

AND
THE ESTABLISHMENT OF GRADES AND OF ROADWAY TREATMENT
AND
THE ADJUSTMENT OF BLOCK DIMENSIONS
AND
THE DELINEATION OF A FOUNDATION & MAINTENANCE CORRIDOR

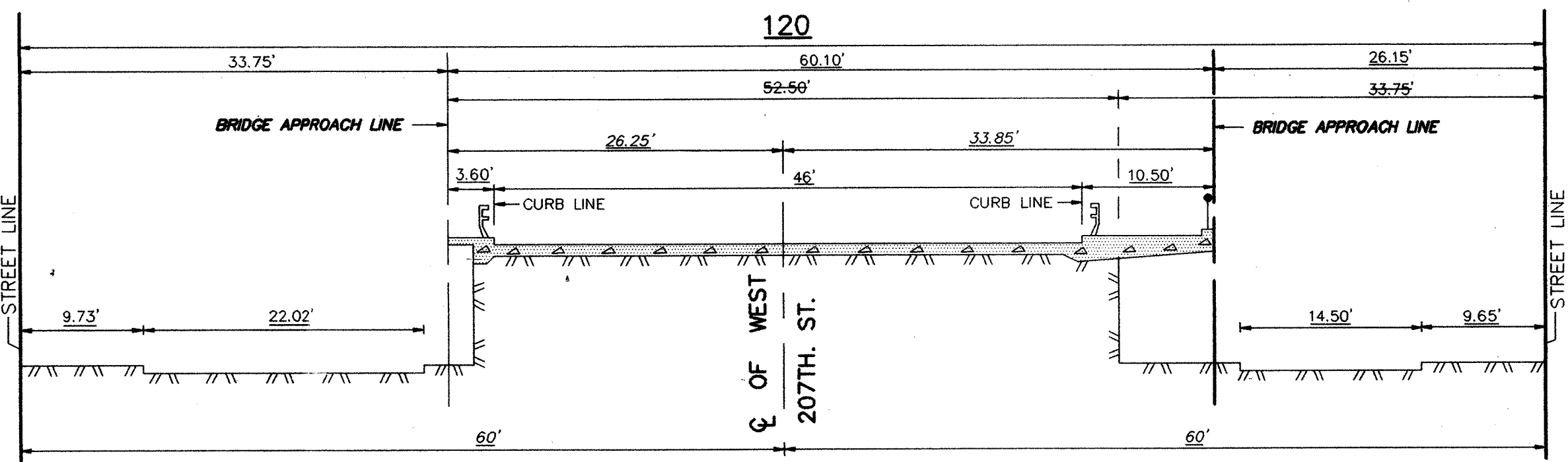
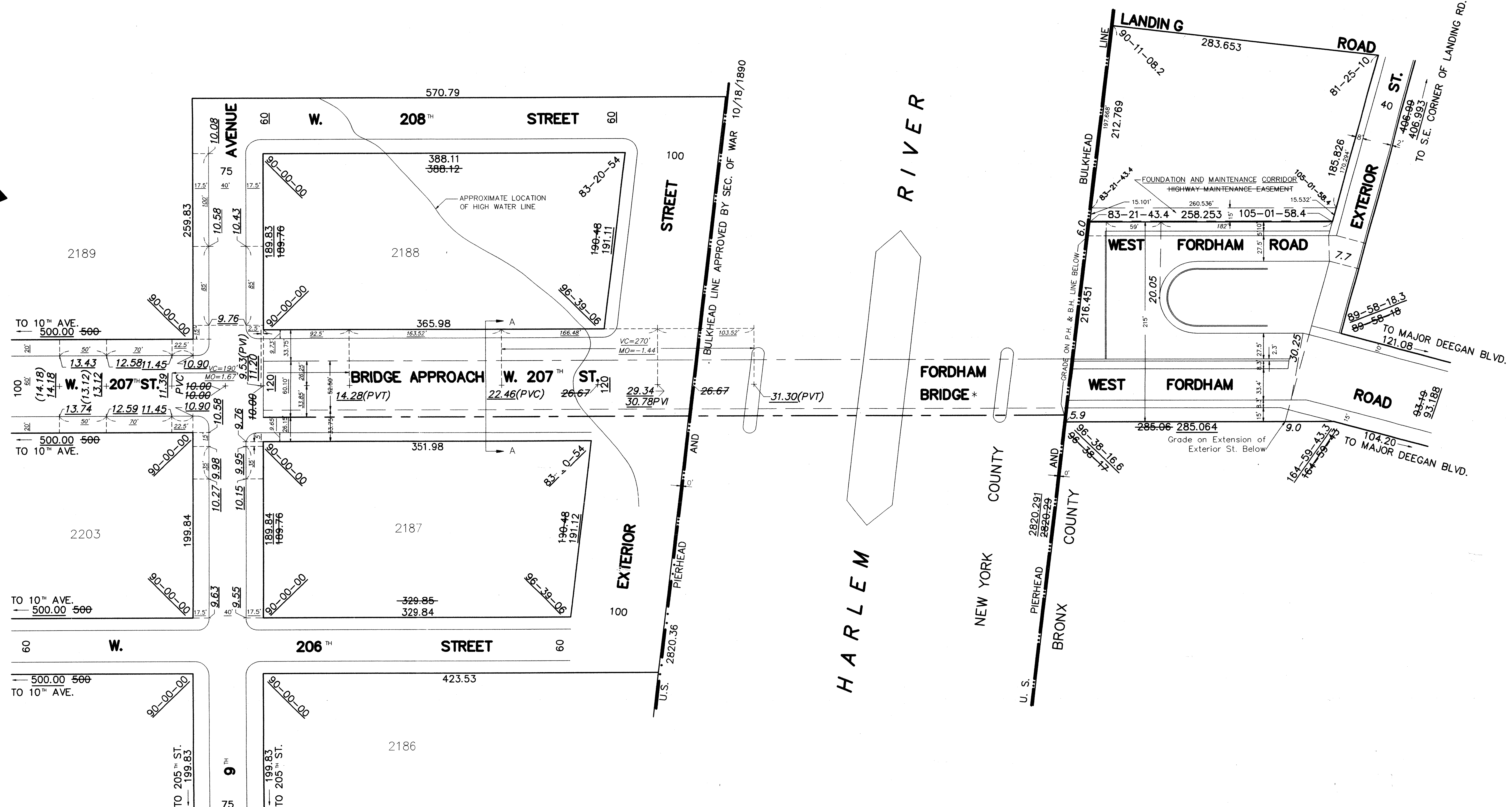
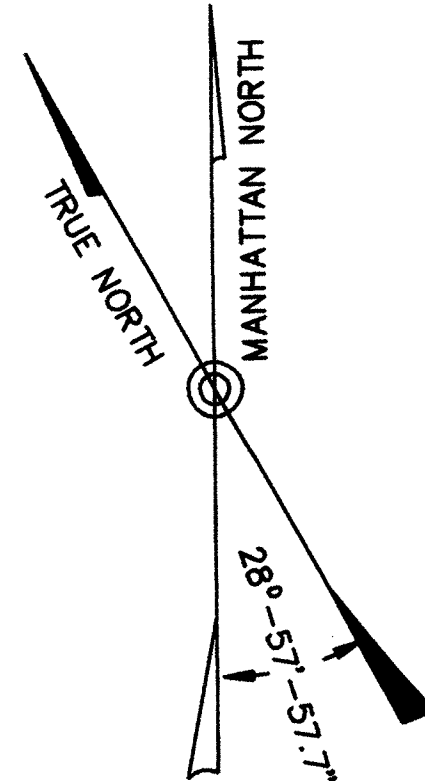
DATED: JANUARY 20, 1999

Maria Rodas F. P.
TOPOGRAPHIC ENGINEER
DEPARTMENT OF CITY PLANNING
Josephine
DIPLOMAT
DEPARTMENT OF CITY PLANNING



NOTES

- * The bridge is also known as University Heights Bridge.
 - — — — — Indicates U.S. Pierhead and Bulkhead line.
 - — — — — Indicates street line heretofore established and hereby retained.
 - — — — — Indicates roadway and sidewalk treatment hereby established or heretofore established and hereby retained.
 - — — — — Indicates bridge or bridge approach line hereby established.
 - — — — — Indicates bridge or bridge approach line heretofore established and hereby eliminated.
 - — — — — Indicates bridge or bridge approach line heretofore established and hereby retained.
 - 351.98 Indicates dimension heretofore established and hereby retained.
 - 189.84 Indicates dimension hereby established.
 - 190.48 Indicates dimension heretofore established and hereby eliminated.
 - 13.12 Indicates elevation hereby established.
 - 10.00 Indicates elevation heretofore established and hereby eliminated.
 - (14.18) Indicates existing elevation.
 - 20' Indicates tie-in distances hereby established.
 - 15' Indicates roadway and sidewalk treatment dimension heretofore established and hereby retained.
 - 20' Indicates roadway and sidewalk treatment dimension hereby established.
 - 33.75' Indicates roadway and sidewalk treatment dimension heretofore established and hereby eliminated.
 - 20.50 PVI Indicates theoretical elevation at point of vertical intersection of the two vertical tangents hereby established.
 - (PVC) Indicates Point of Vertical Curvature.
 - (PVT) Indicates Point of Vertical Tangency.
- Manhattan elevations refer to the datum of the Borough of Manhattan, which is 2.750 feet above the U.S.C. & G. Survey datum at Sandy Hook, New Jersey.
Bronx elevations refer to the datum of the Borough of the Bronx, which is 2.608 feet above the U.S.C. & G. Survey datum at Sandy Hook, New Jersey.
- Elevations along curbline are taken at top of curb.
Elevations at street centerline are taken at pavement level unless otherwise indicated.
- Sidewalk dimensions shown are theoretically established for grade determination purposes only.



SECTION A-A
MANHATTAN APPROACH TO BRIDGE
SCALE: 1" = 10'

- ### REFERENCE MAPS
- MANHATTAN
ACC NO. 4555
7388
25691
29111 (CP 7584)
- BRONX
PLAN NO. 11263(CP5677)
11264(CP5898)
11317(CP7666)
11387(CP10007)
13030(C880206MMX)

I, ROSA R. ROMERO, SECRETARY OF THE CITY PLANNING COMMISSION, DO HEREBY CERTIFY THAT THIS MAP IS ONE OF SEVERAL SIMILAR MAPS APPROVED BY THE CITY PLANNING COMMISSION ON THE 18th DAY OF OCTOBER, 1998 (CALENDAR NO. 18), WHICH ACTION COMPRISED FINAL APPROVAL AND THAT THESE MAPS WERE FILED ON THE DATE OF THIS CERTIFICATION AND WILL TAKE EFFECT ON THE FOLLOWING DAY.

DATE: NEW YORK *September 25, 1999*
Maria Rodas F. P.
SECRETARY, CITY PLANNING COMMISSION

NOTE: Manhattan BP Map No. 7388 had an error in the dimensions of blocks 2187 and 2188. This Map has corrected that error.