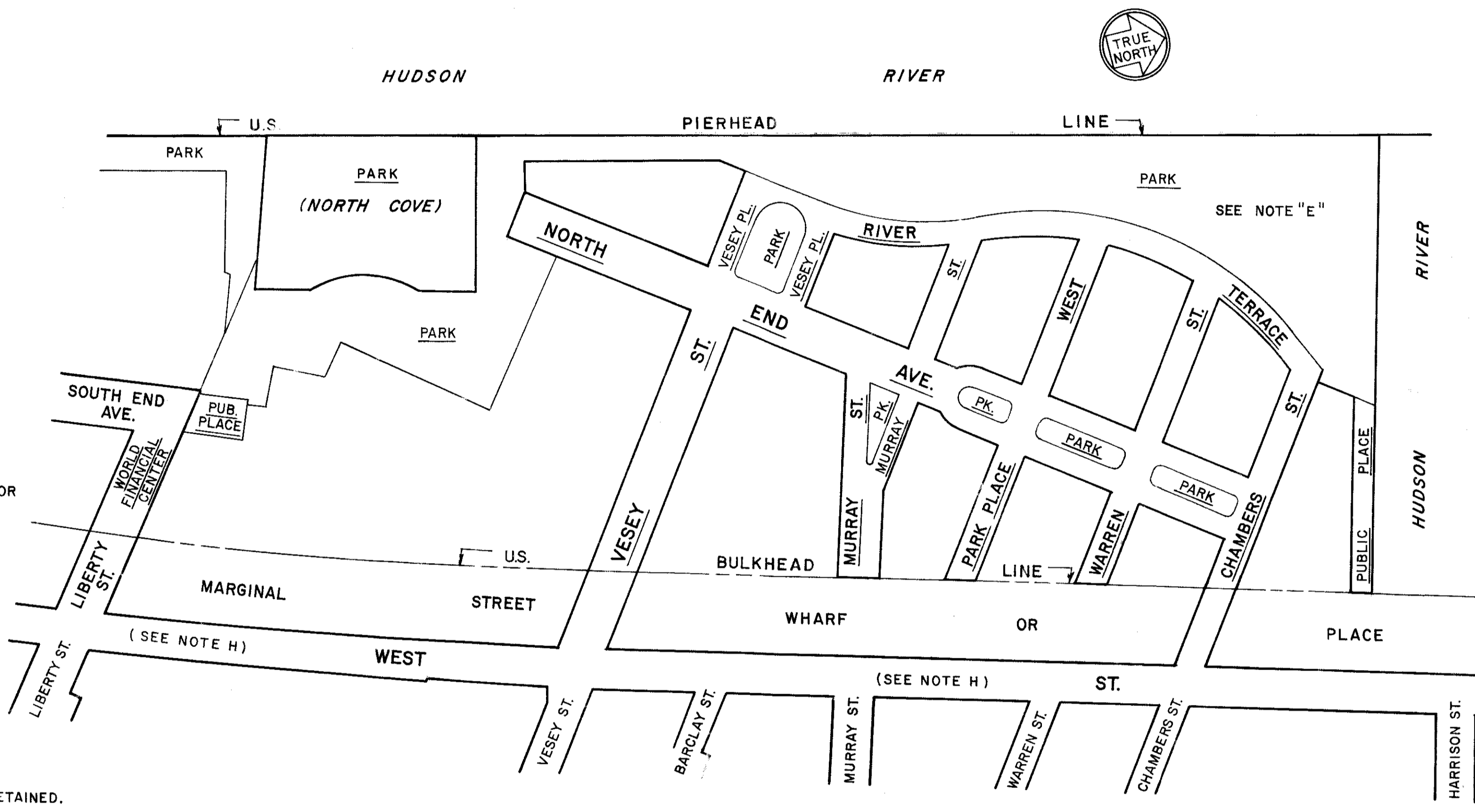


CITY OF NEW YORK
OFFICE OF THE PRESIDENT BOROUGH OF MANHATTAN
TOPOGRAPHICAL BUREAU

MAP SHOWING A CHANGE IN THE CITY MAP
BY
ESTABLISHING THE LINES AND GRADES
OF
A NEW STREET SYSTEM
BY
LAYING OUT NEW PARKS AND PUBLIC PLACES,
BY
ELIMINATING PORTIONS OF THE MARGINAL STREET, WHARF, OR PLACE
AND BY
DELINEATING VARIOUS EASEMENTS
ALL
WITHIN THE AREA GENERALLY BOUNDED
BY
LIBERTY STREET, THE HUDSON RIVER,
THE WESTERLY PROLONGATION OF
HARRISON STREET AND WEST STREET
IN CONNECTION WITH THE SITE
FOR
BATTERY PARK CITY



LEGEND

- INDICATES STREET OR PUBLIC PLACE OR MARGINAL STREET, WHARF OR PLACE LINE HERETOFORE ESTABLISHED AND HEREBY RETAINED.
- INDICATES STREET OR PUBLIC PLACE LINE HEREBY ESTABLISHED AND HEREBY ELIMINATED.
- 420.00' INDICATES DIMENSION HERETOFORE ESTABLISHED AND HEREBY RETAINED.
- 275.00' INDICATES DIMENSION HEREBY ESTABLISHED.
- 60' INDICATES DIMENSION HERETOFORE ESTABLISHED AND HEREBY ELIMINATED.
- 27.3 INDICATES ELEVATION HERETOFORE ESTABLISHED AND HEREBY RETAINED.
- 27.5 INDICATES ELEVATION HERETOFORE ESTABLISHED AND HEREBY ELIMINATED.
- 34.0 INDICATES ELEVATION HERETOFORE ESTABLISHED AND HEREBY ELIMINATED.
- 200.00' INDICATES TIE-IN DISTANCE HERETOFORE ESTABLISHED AND HEREBY RETAINED.
- 200.00' INDICATES TIE-IN DISTANCE HEREBY ESTABLISHED.
- INDICATES SIDEWALK AND ROADWAY TREATMENT HEREBY ESTABLISHED OR HERETOFORE ESTABLISHED AND HEREBY RETAINED.
- 15' INDICATES SIDEWALK AND ROADWAY TREATMENT DIMENSION HERETOFORE ESTABLISHED AND HEREBY RETAINED.
- 15' INDICATES SIDEWALK AND ROADWAY TREATMENT DIMENSION HEREBY ESTABLISHED.
- XXXXXX INDICATES PARK LINE HERETOFORE ESTABLISHED AND HEREBY ELIMINATED.
- INDICATES PARK HERETOFORE ESTABLISHED AND HEREBY RETAINED.
- INDICATES PARK HEREBY ESTABLISHED.
- INDICATES PUBLIC PLACE HEREBY ESTABLISHED.
- INDICATES EASEMENT LINE, SHOWN FOR INFORMATIONAL PURPOSES ONLY AND ARE NOT A PART OF THE CITY MAP. ELEVATIONS ARE FOR TOP OF CURB AND ARE REFERRED TO THE DATUM OF THE TOPOGRAPHICAL BUREAU, BOROUGH OF MANHATTAN WHICH IS 2.75 FEET ABOVE THE U.S.C.&G. DATUM AT SANDY HOOK.
- INDICATES U.S. BULKHEAD LINE.
- RADIUS OF CURB AT CORNERS IS 12', UNLESS NOTED OTHERWISE.
- 358.48 INDICATES EXISTING DIMENSION OF EASEMENT.
- 30.42 INDICATES NEW DIMENSION OF EASEMENT.
- ULP INDICATES UPPER LIMITING PLANE
- LLP INDICATES LOWER LIMITING PLANE

LOCATION PLAN

NOTES:

- A-ELEVATIONS ARE REFERRED TO THE DATUM OF THE TOPOGRAPHICAL BUREAU, BOROUGH OF MANHATTAN WHICH IS 2.75 FEET ABOVE THE U.S.C.&G. DATUM AT SANDY HOOK.
- B- THIS MAP SHOWS VARIOUS EASEMENTS, AS NOTED. THESE EASEMENTS ARE SHOWN FOR INFORMATIONAL PURPOSES ONLY AND ARE NOT PART OF THE CITY MAP. THE EASEMENTS ARE DESCRIBED IN DETAIL IN THE MAPPING AGREEMENT BETWEEN THE CITY OF NEW YORK AND THE APPLICANT, WHICH IS ON FILE IN THE OFFICE OF THE N.Y.C. LAW DEPARTMENT.
- "P.A. EASEMENT" INDICATES PORT AUTHORITY OF NEW YORK AND NEW JERSEY EASEMENT.
- C- ALL CURBS, SHOWN ON THIS MAP WILL BE MAINTAINED BY THE BATTERY PARK CITY AUTHORITY PURSUANT TO THE MAPPING AGREEMENT.
- ~~D- THE STREETS SHOWN CONTIGUOUS TO THE EASTERLY SIDE OF WEST STREET, BETWEEN MURRAY ST. AND HARRISON ST. ARE AS SHOWN ON THE LATEST AMENDED BOROUGH PRESIDENTS' MAP NO. A66-80.~~
- E. NOTED PARK MAY BE REFERRED TO AS "NORTH PARK" IN CITY PLANNING REPORTS, AND THE RELATED DOCUMENTS.
- F. THE NAME GIVEN TO THE PROJECT AREA SHOWN ON THESE SHEETS MAY SOMETIMES BE REFERRED TO AS "BATTERY PARK CITY NORTH" IN CITY PLANNING REPORTS AND RELATED DOCUMENTS.
- G. REGULATIONS FOR USE OF THE "NORTH COVE" WILL BE INCLUDED IN THE MAPPING AGREEMENT.
- H. FOR DETAILS OF THE MAPPED ELEVATED HIGHWAY AND ADDITIONAL LEGAL GRADES IN WEST STREET, SEE MAP DCP NO. CP-2351 ADOPTED BY THE BOARD OF ESTIMATE ON MAY 23, 1946 (CAL. NO. 12A).
- J. BY CORRESPONDENCE DATED JUNE 7, 1988 BETWEEN NYCDOT AND NYC LAW DEPARTMENT, THE PROPOSED TO-HAVE-BEEN-DELINEATED 15-FOOT WIDE SIDEWALK EASEMENT ADJACENT TO THE MARGINAL STREET, WHARF OR PLACE BETWEEN VESEY STREET AND PUBLIC PLACE (AT NORTHERN BOUNDARY OF BATTERY PARK CITY) WAS ELIMINATED FROM THIS ALTERATION MAP.

REFERENCE MAPS

ACCESSION NUMBER	CITY PLANNING NUMBER
30079	C821106 MMM
30077R	C820079 MMM
30071	C800983 MMM
29911	CP-19754
29910	CP-19753
25198	-----
29985	CP-21126
30025	CP-22146
30035	CP-22603
----	CP-2351

APPROVED FOR DEPARTMENT OF PARKS AND RECREATION
Henry Stern
HENRY STERN
COMMISSIONER OF PARKS

I MICHAEL HUERTA, COMMISSIONER OF PORTS, INTERNATIONAL TRADE, AND COMMERCE HEREBY APPROVE THIS MAP PURSUANT TO SECTIONS 704 AND 705 OF THE NEW YORK CITY CHARTER
Michael Huerta
COMMISSIONER OF THE DEPARTMENT OF PORTS INTERNATIONAL TRADE, AND COMMERCE

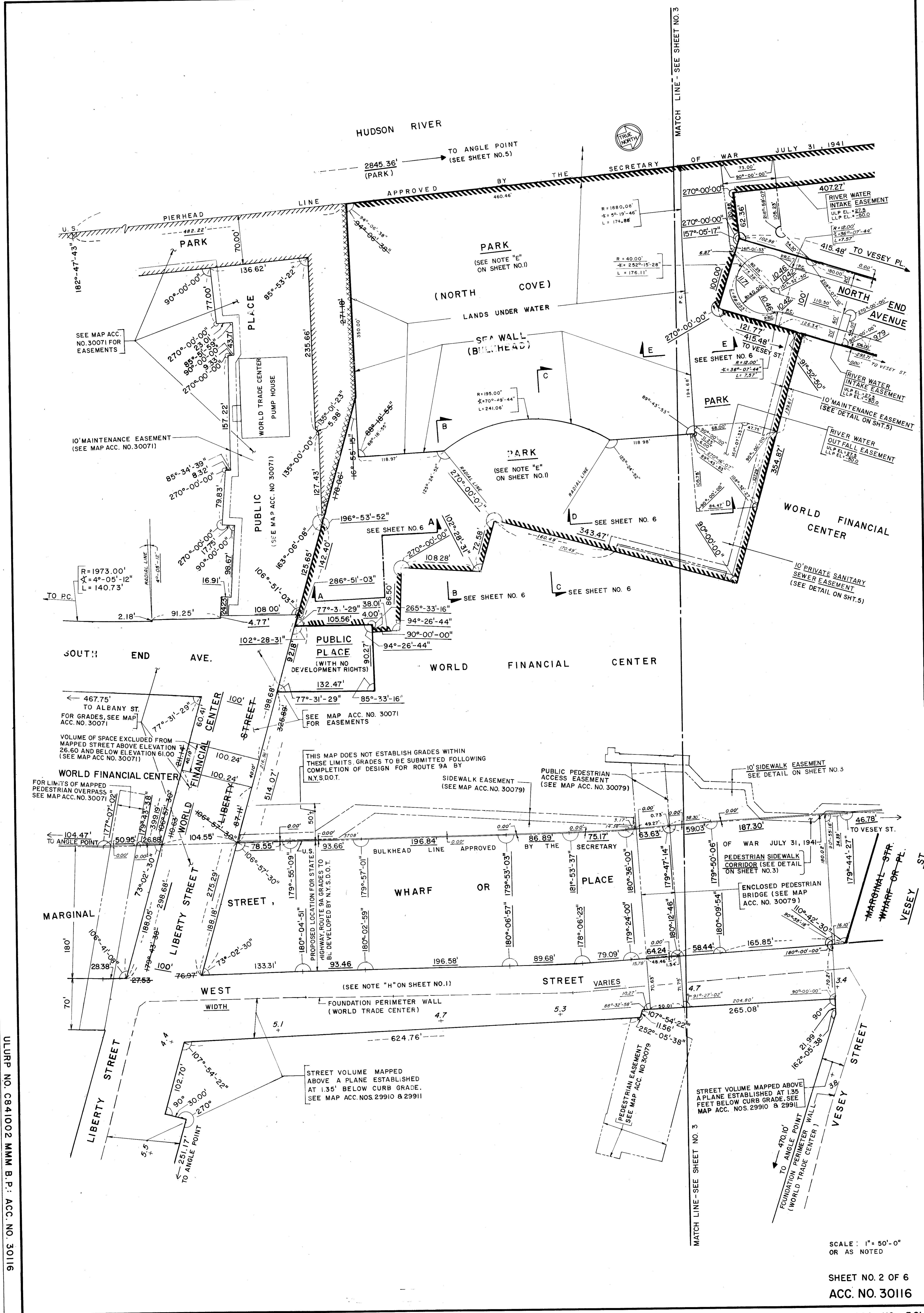
David N. Dinkins
DAVID N. DINKINS
PRESIDENT, BOROUGH OF MANHATTAN
Anthony C. Gulotta
ANTHONY C. GULOTTA, P.E.
CONSULTING ENGINEER
FOR THE BOROUGH OF MANHATTAN

I, LOIS McDANIEL, SECRETARY OF THE CITY PLANNING COMMISSION, DO HEREBY CERTIFY THAT THIS MAP IS ONE OF ELEVEN SIMILAR MAPS ADOPTED BY THE CITY PLANNING COMMISSION ON THE 28TH OF JANUARY 1987 (CALENDAR NUMBER 43) AND SUBSEQUENTLY ADOPTED WITH MODIFICATIONS BY THE BOARD OF ESTIMATE ON FEBRUARY 26, 1987 (CALENDAR NUMBER 1) AND THAT THESE MAPS WERE FILED ON THE DATE OF THIS CERTIFICATION AND WILL TAKE EFFECT ON THE FOLLOWING DAY.
DATE: November 5, 1987
Lois McDaniel
SECRETARY, CITY PLANNING COMMISSION

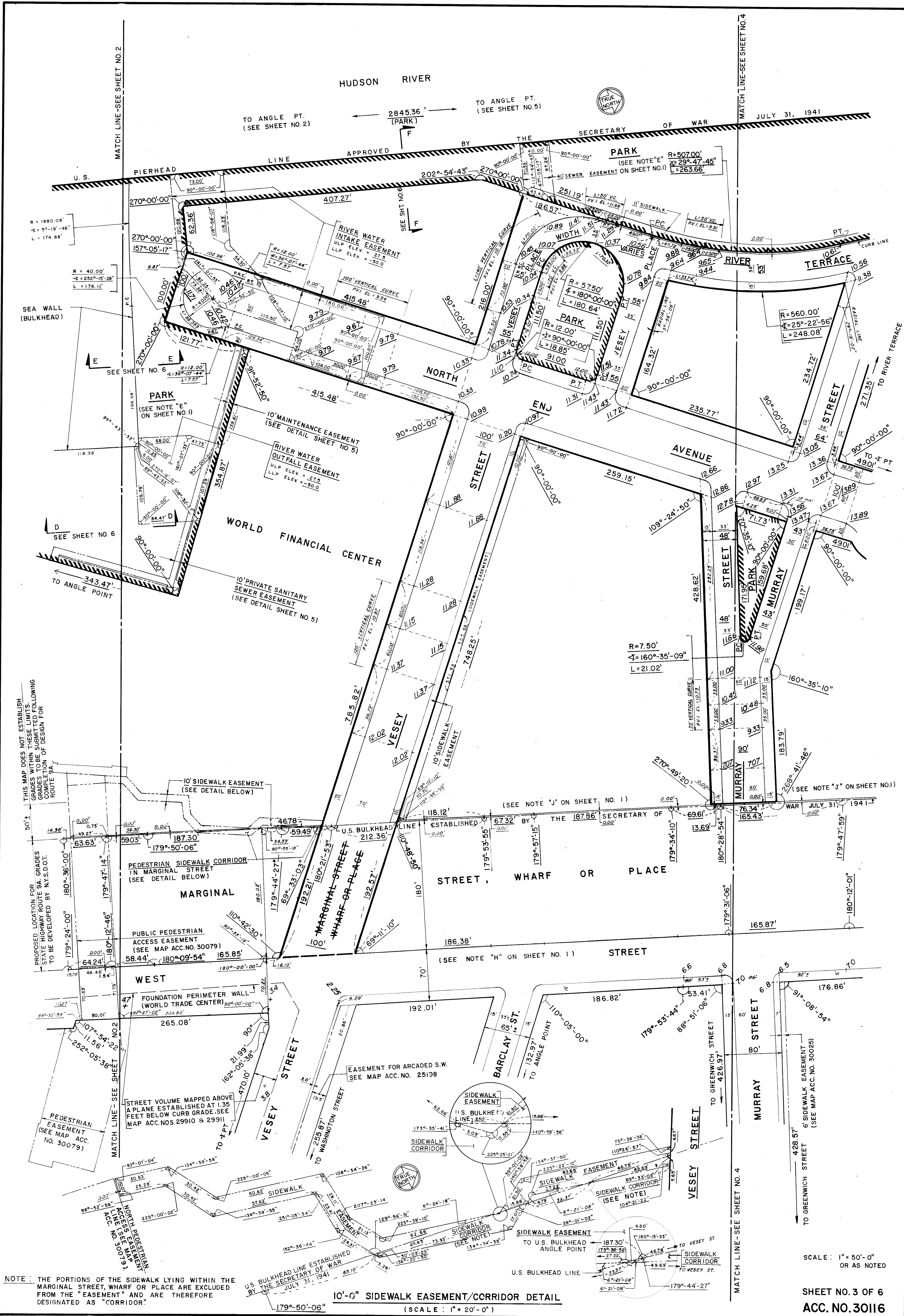
* THE MODIFICATIONS CONTAINED IN THE BOARD OF ESTIMATE RESOLUTION INVOLVED LAND USE ISSUES AND DID NOT INVOLVE ANY MODIFICATION TO THIS ALTERATION MAP.

ULURP NO. C841002 MMM B.P. ACC. NO. 30116

Drawn: 40



ULURP NO. C841002 MMM B.P.: ACC. NO. 30116



THIS MAP DOES NOT ESTABLISH GRADES WITHIN THESE LIMITS. GRADES TO BE SUBMITTED FOLLOWING COMPLETION OF DESIGN FOR ROUTE 9A.

PROPOSED LOCATION FOR STATE HIGHWAY ROUTE 9A. GRADES TO BE DEVELOPED BY NYS.D.O.T.

NOTE: THE PORTIONS OF THE SIDEWALK LYING WITHIN THE MARGINAL STREET, WHARF OR PLACE ARE EXCLUDED FROM THE "EASEMENT" AND ARE THEREFORE DESIGNATED AS "CORRIDOR".

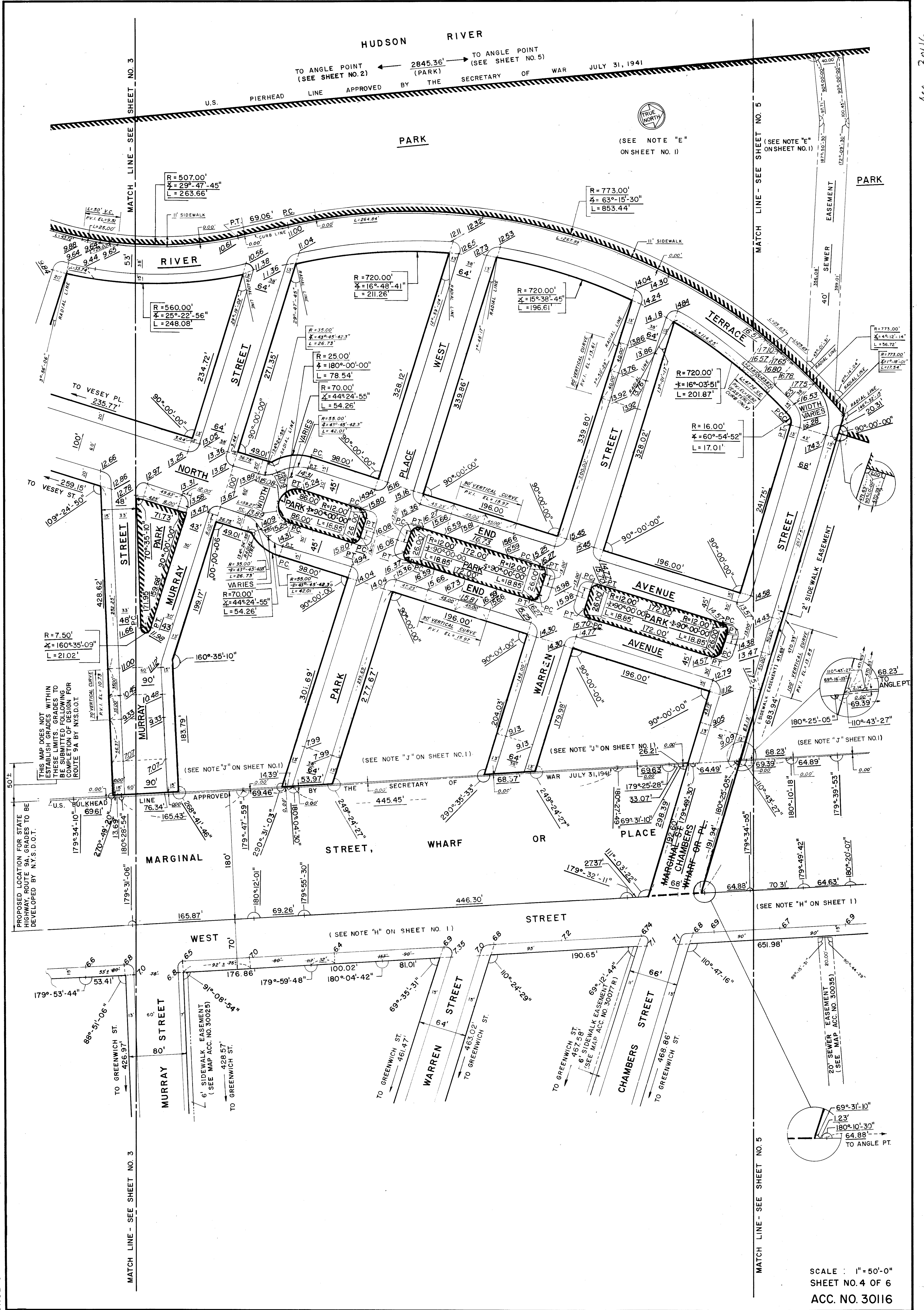
10'-6" SIDEWALK EASEMENT/CORRIDOR DETAIL (SCALE: 1" = 20'-0")

SCALE: 1" = 50'-0" OR AS NOTED

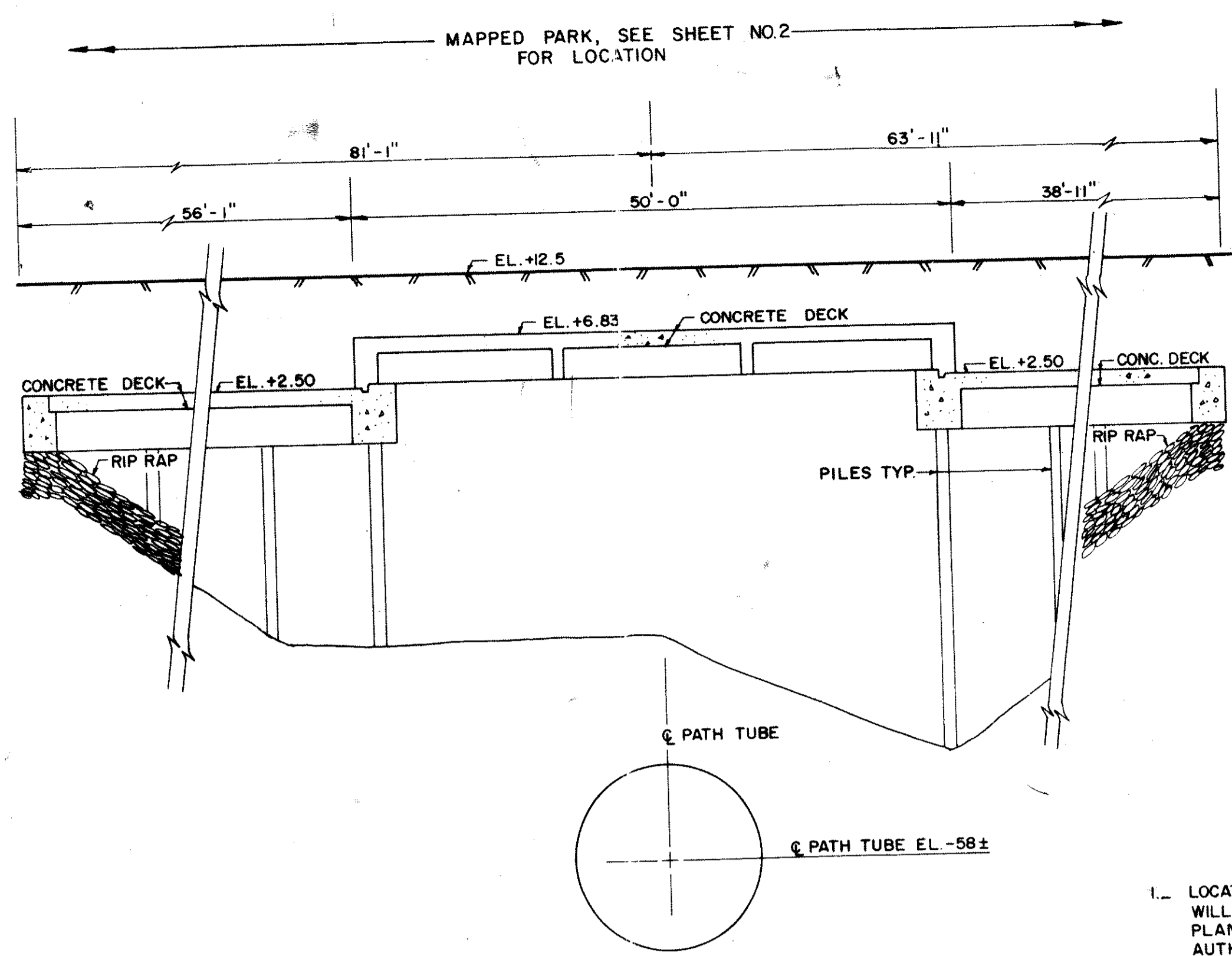
SHEET NO. 3 OF 6 ACC. NO. 30116

ULURP NO. C841002 MMM B.P. ACC. NO. 30116

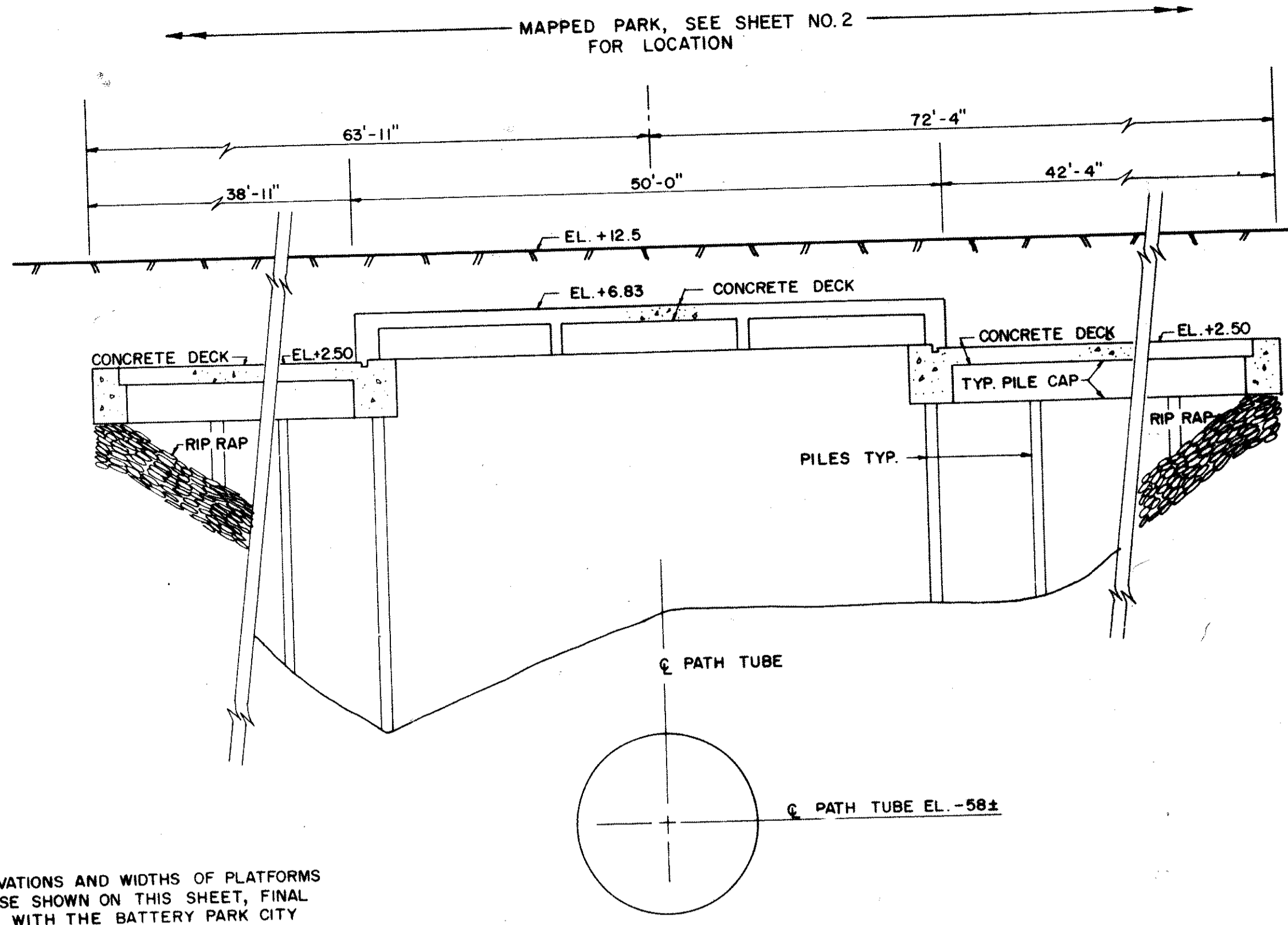
Acc. 30116



Acc 30116



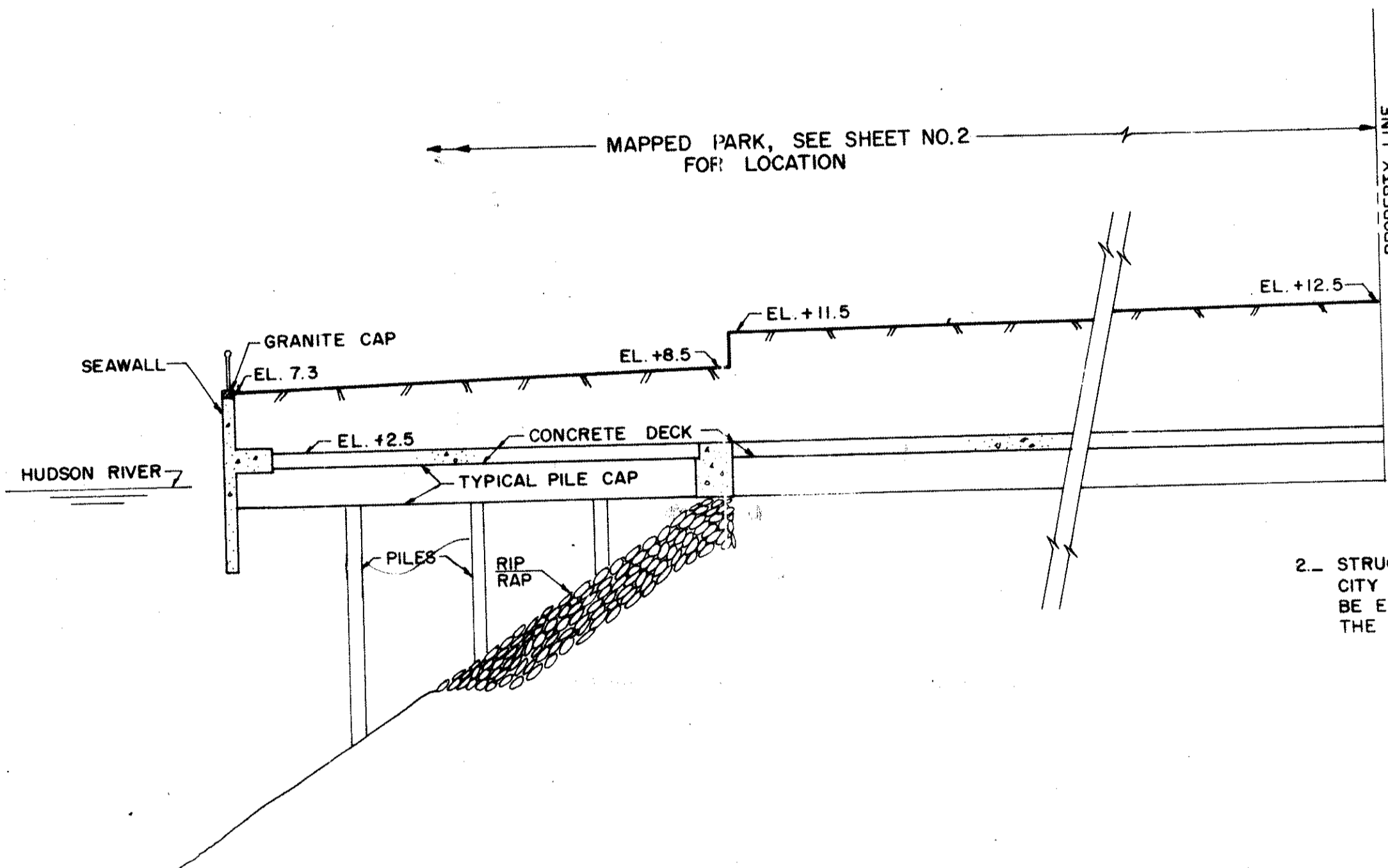
SECTION A-A



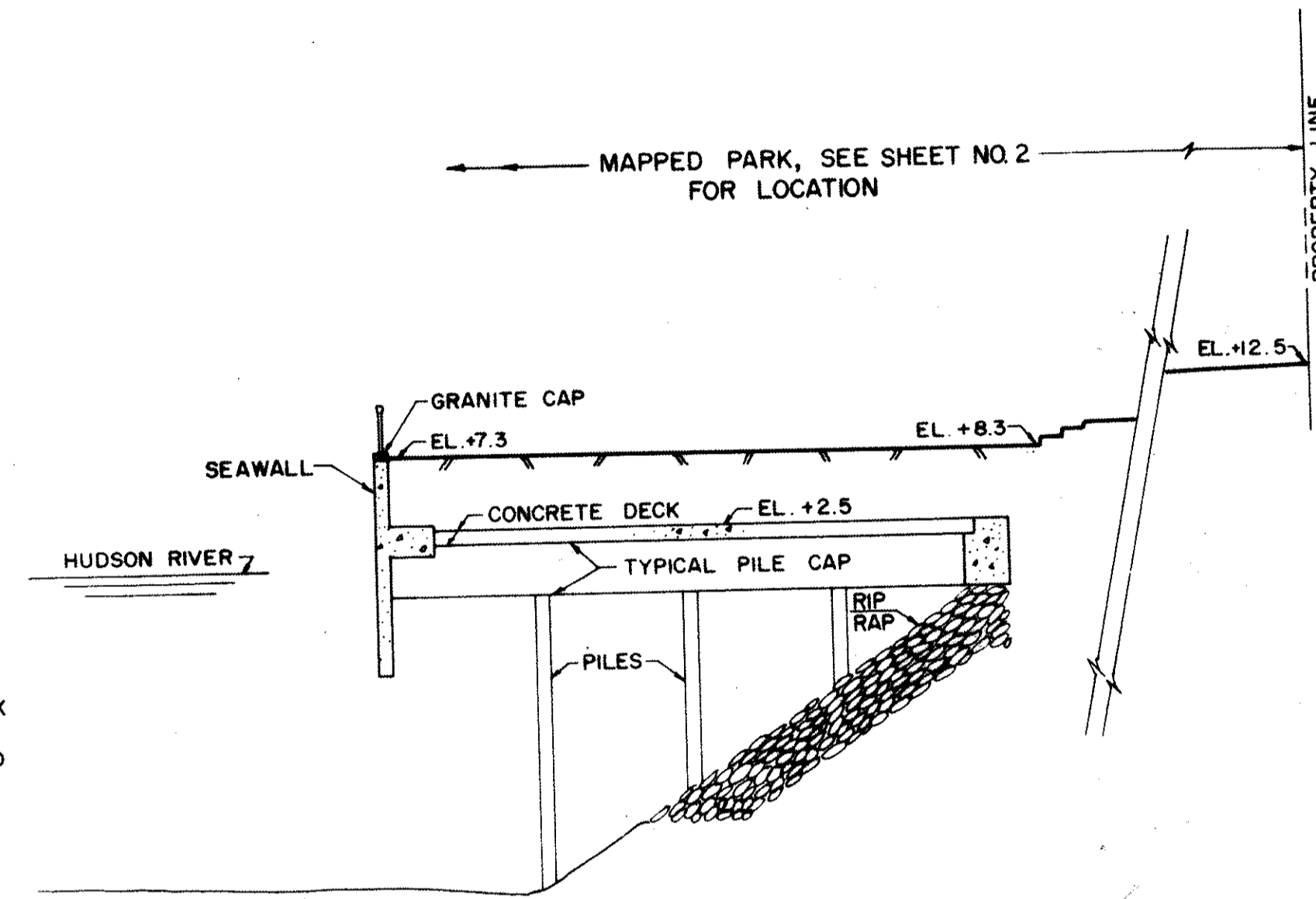
SECTION D-D

NOTES

1. LOCATION, SHAPE, ELEVATIONS AND WIDTHS OF PLATFORMS WILL VARY FROM THOSE SHOWN ON THIS SHEET, FINAL PLANS ARE ON FILE WITH THE BATTERY PARK CITY AUTHORITY.

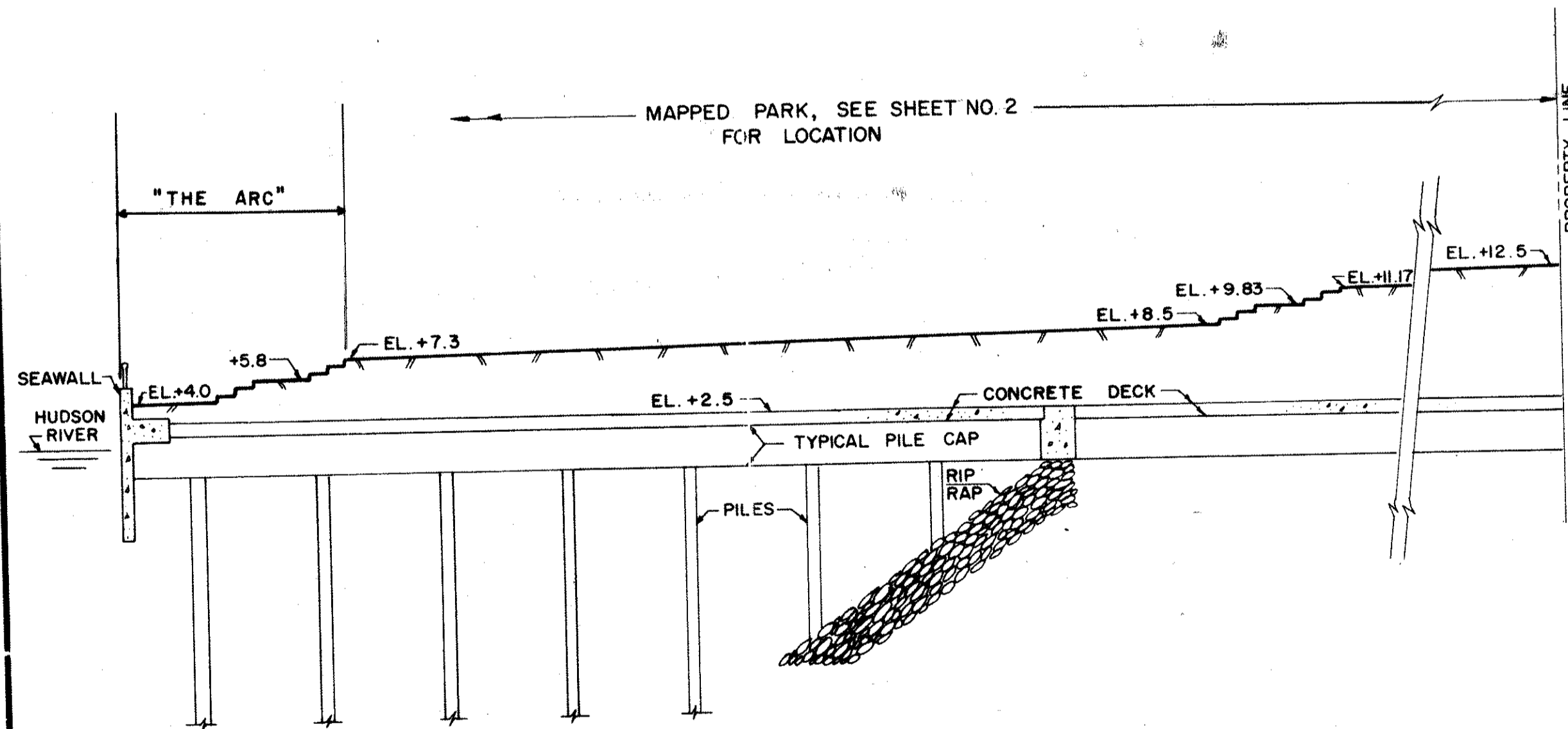


SECTION B-B

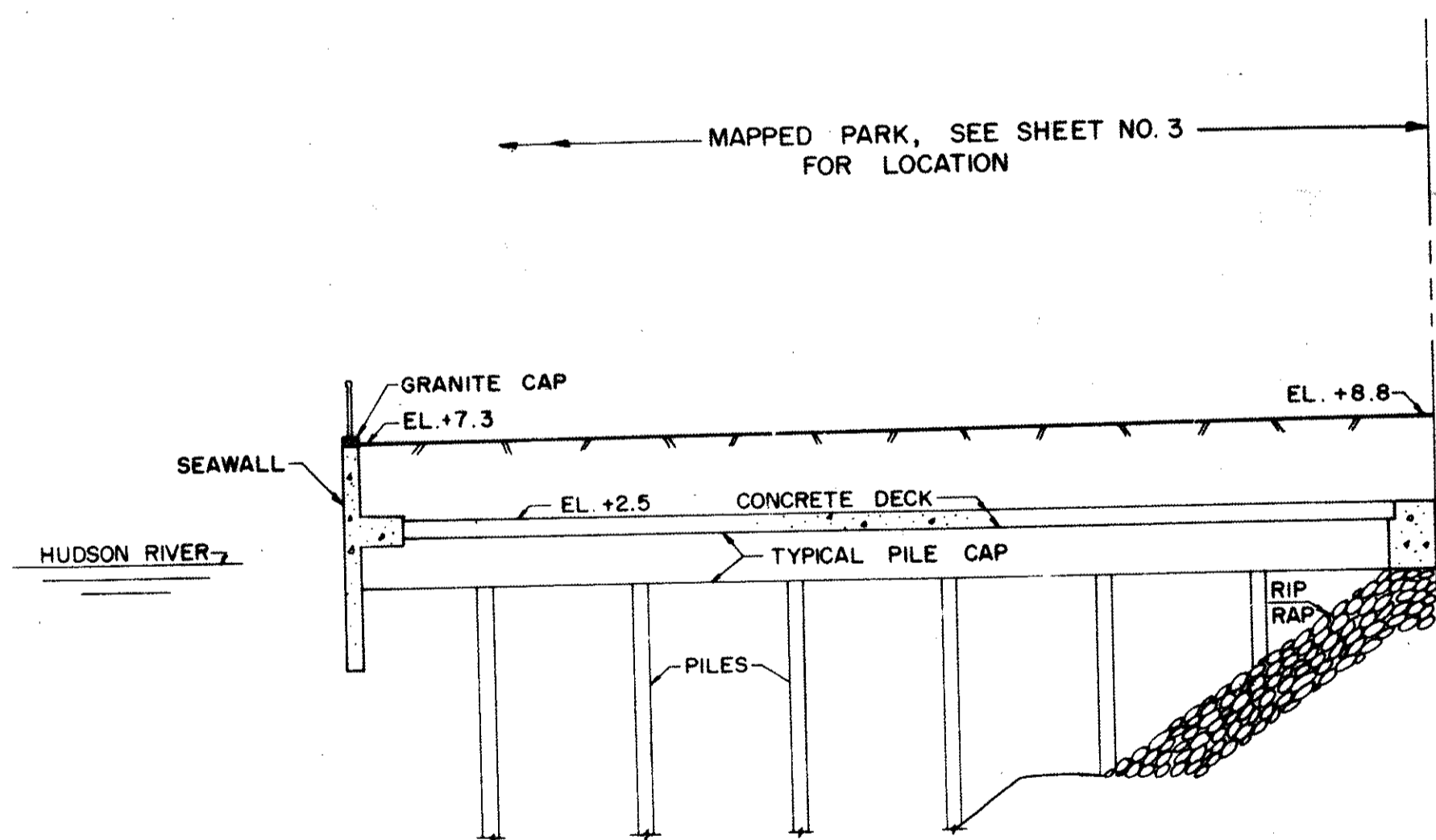


SECTION E-E

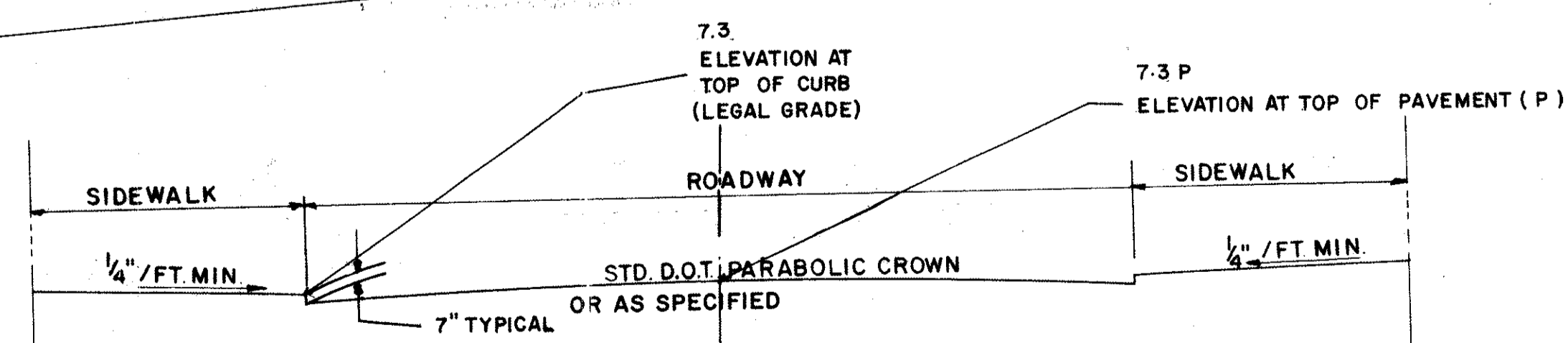
2. STRUCTURES WILL BE MAINTAINED BY THE BATTERY PARK CITY AUTHORITY IN ACCORDANCE WITH AN AGREEMENT TO BE ENTERED INTO BETWEEN THE CITY OF NEW YORK AND THE BATTERY PARK CITY AUTHORITY.



SECTION C-C



SECTION F-F



TYPICAL SECTION

NOTE: THE SECTIONS AND ELEVATIONS SHOWN ON THIS SHEET ARE FOR INFORMATIONAL PURPOSES ONLY AND ARE NOT A PART OF THE CITY MAP.