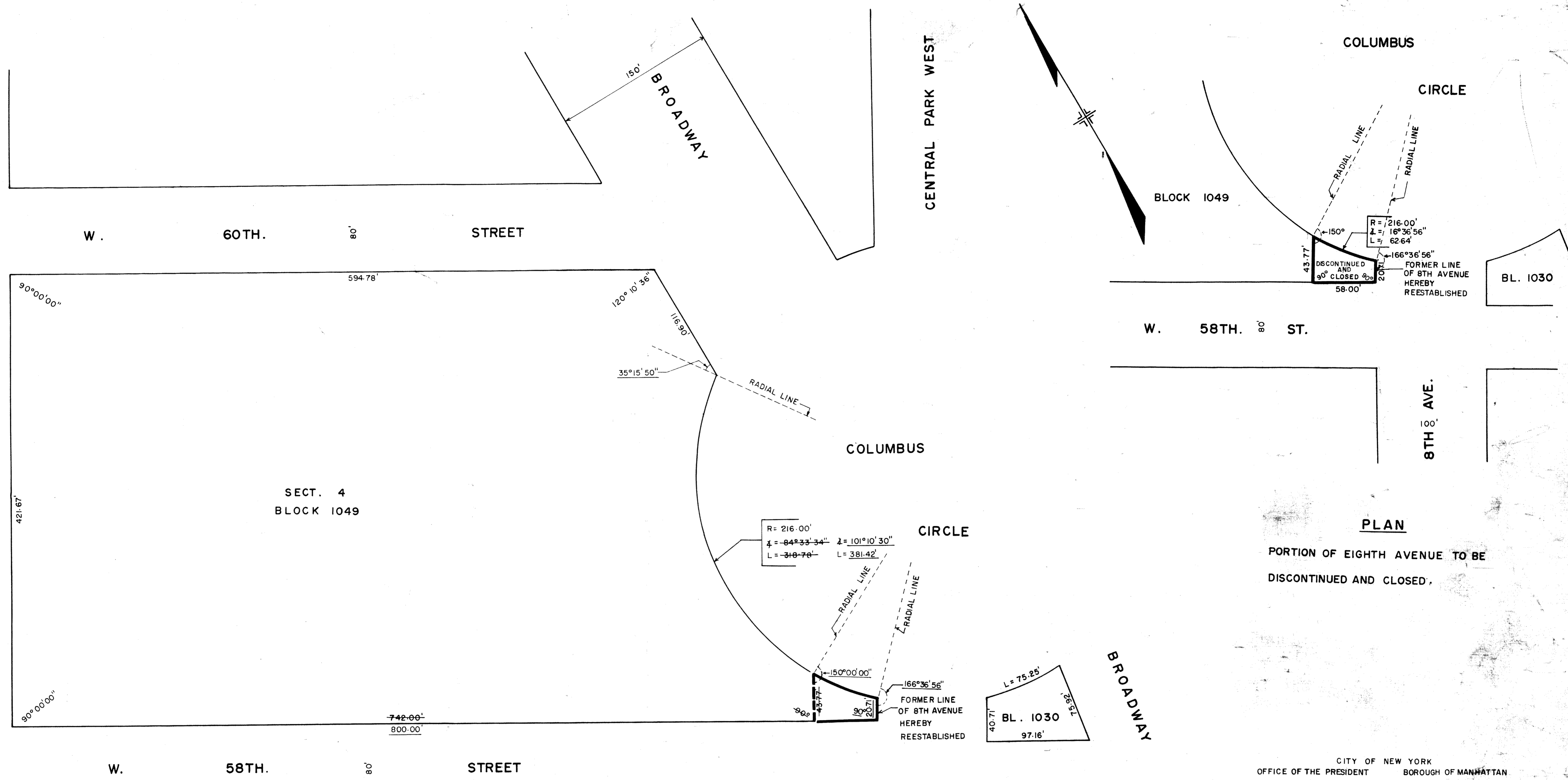


COLUMBUS AVENUE
NINTH AVENUE



PLAN
 PORTION OF EIGHTH AVENUE TO BE
 DISCONTINUED AND CLOSED

CITY OF NEW YORK
 OFFICE OF THE PRESIDENT
 TOPOGRAPHICAL BUREAU

MAP SHOWING A CHANGE IN THE CITY MAP
 BY ELIMINATING, DISCONTINUING AND CLOSING
 A PORTION OF
EIGHTH AVENUE
 ON ITS WESTERLY SIDE
 BETWEEN
 WEST 58TH STREET AND
 COLUMBUS CIRCLE
 BOROUGH OF MANHATTAN

I, LOIS McDaniel, Secretary of the City Planning Commission,
 do hereby certify that this map is one of eight similar maps
 approved by the City Planning Commission on the 22nd day
 of March, 1989 (Cal. No. 33), and subsequently approved by
 the Board of Estimate on May 4, 1989 (Cal. No. 14), and
 that these maps were filed on the date of this certification
 and will take effect on the following day.
 Date: New York *October 11, 1996*
Lois McDaniel
 Secretary, City Planning Commission

I, THEODORE MEEKINS, SECRETARY OF THE
 BOARD OF ESTIMATE OF THE CITY OF NEW
 YORK DO HEREBY CERTIFY THAT THIS MAP
 IS ONE OF SEVEN SIMILAR MAPS ADOPTED
 BY THE SAID BOARD OF ESTIMATE ON THE
 5th of February, 1987. CAL. 2
 DATED: NEW YORK *10/27/1987*
Theodore Meekins
 SECRETARY BOARD OF ESTIMATE

NOTE: THIS MAP AMENDS MAP ACC. NO. 29306,
 29305, 29377, 29436 & 29815

DATED: APRIL 29, 1986

SCALE: 1" = 50'

Anthony Chabotta, P.E.
 CONSULTING ENGINEER
 BOROUGH PRESIDENT OF MANHATTAN

NOTES

- INDICATES STREET LINE HERETOFORE ESTABLISHED AND HEREBY RETAINED
- - - INDICATES STREET LINE HERETOFORE ESTABLISHED AND HEREBY ELIMINATED
- 116-90' INDICATES DIMENSION HERETOFORE ESTABLISHED AND HEREBY RETAINED
- 58-00' INDICATES DIMENSION HEREBY ESTABLISHED
- 43-7.7' INDICATES DIMENSION HERETOFORE ESTABLISHED AND HEREBY ELIMINATED
- INDICATES PORTION OF STREET TO BE DISCONTINUED AND CLOSED
- INDICATES STREET LINE HEREBY ESTABLISHED

DRAWN BY: Y.L.
 CHECKED BY: A.G.