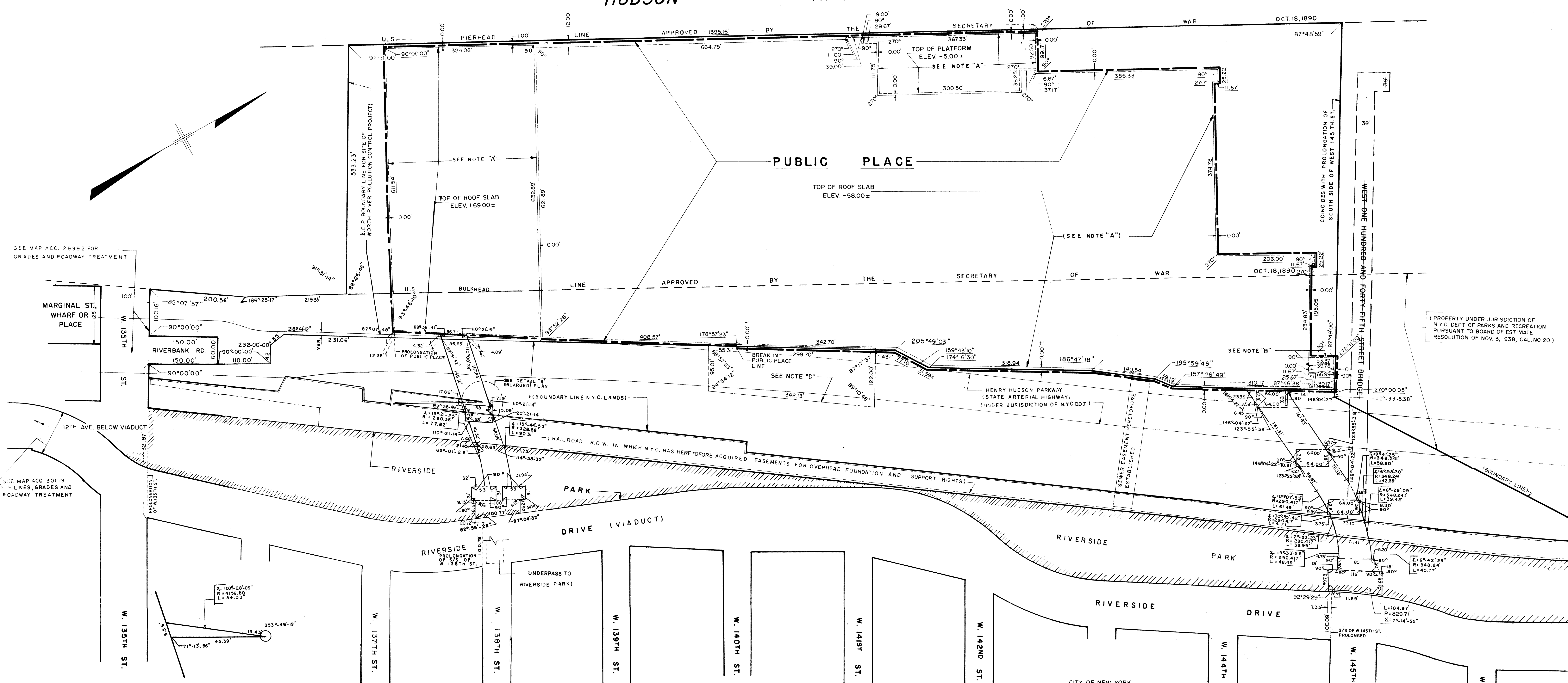


# HUDSON RIVER



SEE MAP ACC. 29992 FOR GRADES AND ROADWAY TREATMENT

SEE MAP ACC. 30019 FOR LINES, GRADES AND ROADWAY TREATMENT

DRAWN BY R.C. B. IN  
 SUBMITTED BY *Anthony Chalko, P.E.*  
 DIRECTOR, MANHATTAN TOPOGRAPHICAL BUREAU

DETAIL "B" ENLARGED PLAN (NOT TO SCALE)

- LEGEND**
- 85°07'57" INDICATES ANGLE HERETOFORE ESTABLISHED AND HEREBY RETAINED.
  - INDICATES RAILROAD R.O.W. IN WHICH N.Y.C. HAS HERETOFORE ACQUIRED EASEMENTS FOR OVERHEAD FOUNDATION AND SUPPORT RIGHTS.
  - INDICATES STREET LINE HERETOFORE ESTABLISHED AND HEREBY RETAINED.
  - INDICATES LINE OF W. 145TH STREET BRIDGE HERETOFORE ESTABLISHED AND HEREBY ELIMINATED.
  - 219.33' INDICATES DIMENSION HERETOFORE ESTABLISHED AND HEREBY RETAINED.
  - 611.54' INDICATES DIMENSION OR ANGLE OF PUBLIC PLACE HEREBY ESTABLISHED.
  - 38' INDICATES DIMENSION HERETOFORE ESTABLISHED AND HEREBY ELIMINATED.
  - INDICATES PARK HERETOFORE ESTABLISHED AND HEREBY RETAINED.
  - INDICATES PROPERTY LINE OR BOUNDARY LINE HERETOFORE ESTABLISHED (FOR INFORM PURPOSES ONLY)
  - INDICATES LINE OF PUBLIC PLACE HEREBY ESTABLISHED.
  - INDICATES INCLUSION OF DATA FOR INFORMATIONAL PURPOSES ONLY.
- AS NOTED**
- INDICATES EASEMENT LINE, SHOWN FOR INFORMATIONAL PURPOSES ONLY. SUBJECT TO EXCEPTIONS FOR PLANT OPERATIONS NOT INDICATED ON THIS DRAWING. EASEMENT ANGLES & DIMENSIONS ARE SHOWN FOR INFORMATIONAL PURPOSES ONLY.

NOTE: THIS MAP DOES NOT SHOW ALL EXISTING EASEMENTS.

*Lois McDaniel*  
 Secretary of the Board of Estimate  
 Date: New York, *August 21, 1986*

*Lois McDaniel*  
 Secretary, Board of Estimate

I, THEODORE MEEKINS, SECRETARY OF THE BOARD OF ESTIMATE OF THE CITY OF NEW YORK DO HEREBY CERTIFY THAT THIS MAP IS ONE OF SEVEN SIMILAR MAPS ADOPTED BY THE SAID BOARD OF ESTIMATE ON OCTOBER 24, 1985, CAL. NO. 1 AND ON JANUARY 8, 1987, CAL. NO. 280 DATED: NEW YORK

CITY OF NEW YORK  
PRESIDENT, BOROUGH OF MANHATTAN

**MAP SHOWING A CHANGE IN THE CITY MAP  
 BY LAYING OUT A  
 PUBLIC PLACE  
 AND BY ELIMINATING THE LINES OF THE  
 WEST ONE HUNDRED AND FORTY-FIFTH STREET BRIDGE  
 IN THE AREA BOUNDED BY  
 WEST 135TH STREET, WEST 145TH STREET, THE HUDSON RIVER  
 AND RIVERSIDE DRIVE  
 IN THE BOROUGH OF MANHATTAN**

DATE: DECEMBER 10, 1986

SCALE: 1" = 80'

PRESIDENT, BOROUGH OF MANHATTAN

- NOTES**
- "A" INDICATES LIMITS OF N.Y.S. PARK AND RECREATION EASEMENT, EXTENDING UPWARDS FROM TOP OF SLAB OR PLATFORM, TO BE GRANTED TO N.Y.C. OFFICE OF PARKS, RECREATION AND HISTORIC PRESERVATION (O.P.R.H.P.) BY N.Y.C.
  - "B" INDICATES LIMITS OF N.Y.S. PARK AND RECREATION EASEMENT, TO BE GRANTED TO O.P.R.H.P. BY N.Y.C. FOR INGRESS AND EGRESS.
  - "C" INDICATES LIMITS OF N.Y.S. PARK, RECREATION AND ACCESS EASEMENT TO BE GRANTED TO O.P.R.H.P. BY N.Y.C. WITHIN WHICH PARK BRIDGES WILL BE LOCATED PURSUANT TO CITY PLANNING COMMISSION APPLICATION 850257PNM.
  - "D" INDICATES LIMITS OF EASEMENT TO BE GRANTED TO O.P.R.H.P. BY N.Y.C. FOR WELLS AND DISPOSAL, PURSUANT TO C.P.C. APPLICATION 850257PNM.

FILED  
 OCT 24 1985  
 BUREAU OF RECORDS  
 BOARD OF ESTIMATE  
 CIVIL ENGINEER