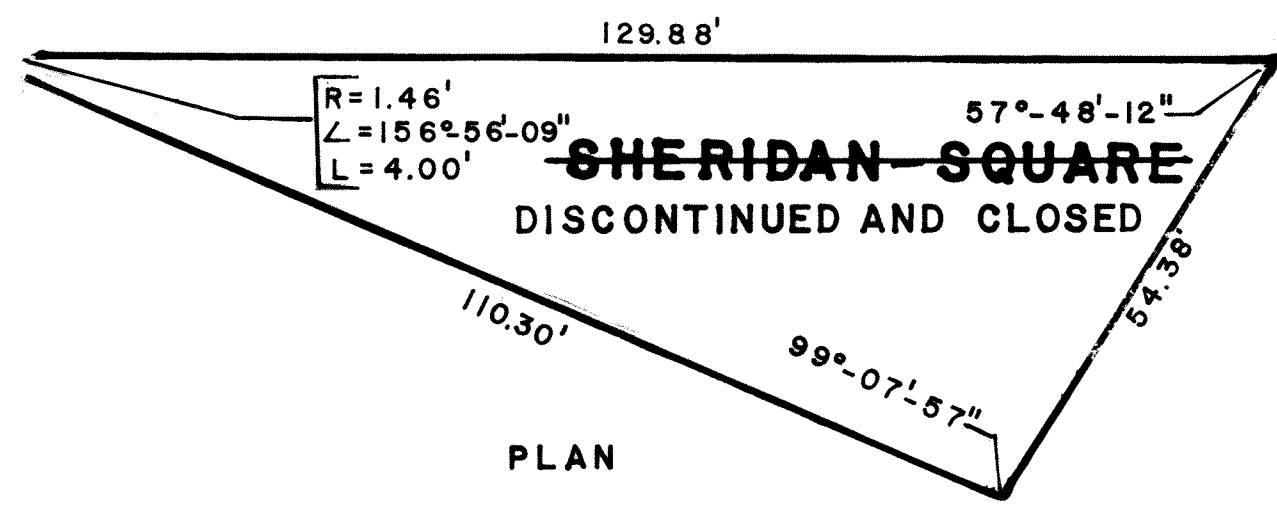


NOTES

- INDICATES STREET LINE HEREBY ESTABLISHED OR HERETOFORE ESTABLISHED AND RETAINED.
- INDICATES SIDEWALK AND ROADWAY TREATMENT HEREBY ESTABLISHED OR HERETOFORE ESTABLISHED AND RETAINED.
- 129.88' INDICATES DIMENSION HEREBY ESTABLISHED.
- 15' INDICATES SIDEWALK AND ROADWAY TREATMENT DIMENSION HERETOFORE ESTABLISHED AND RETAINED.
- 6.30' INDICATES SIDEWALK AND ROADWAY TREATMENT DIMENSION HEREBY ESTABLISHED.
- PARK INDICATES PARK HEREBY ESTABLISHED.
- DISCONTINUED AND CLOSED INDICATES STREET (AND/OR SQUARE) LANDS HEREBY DISCONTINUED AND CLOSED
- PARK INDICATES PARK HERETOFORE ESTABLISHED AND HEREBY RETAINED



SHOWING STREET LANDS TO BE DISCONTINUED AND CLOSED

CITY OF NEW YORK
OFFICE OF THE PRESIDENT, BOROUGH OF MANHATTAN
TOPOGRAPHICAL BUREAU

MAP SHOWING A CHANGE IN THE CITY MAP
BY DISCONTINUING AND CLOSING A PORTION OF SHERIDAN SQUARE
AS STREET (AND/OR SQUARE) LANDS
AND
BY LAYING OUT
THE SHERIDAN SQUARE VIEWING GARDEN PARK
WITHIN THE AREA GENERALLY BOUNDED BY
**WASHINGTON PLACE,
WEST 4TH STREET, AND BARROW STREET**
BOROUGH OF MANHATTAN

I, THEODORE MEEKINS, SECRETARY OF THE BOARD OF ESTIMATE OF THE CITY OF NEW YORK DO HEREBY CERTIFY THAT THIS MAP IS ONE OF SEVEN SIMILAR MAPS ADOPTED BY THE SAID BOARD OF ESTIMATE ON THE DECEMBER 1, 1988 CAL. 4

DATED: NOVEMBER 19, 1984
REVISED: NOVEMBER 4, 1988
DECEMBER 1, 1988

SCALE: 1" = 20'

DRAWN BY: R.C.

DATED: NEW YORK 12/1/89

CHECKED BY: A.G.

SECRETARY, BOARD OF ESTIMATE

COMMISSIONER OF PARKS

PRESIDENT, BOROUGH OF MANHATTAN
DIRECTOR, TOPOGRAPHICAL BUREAU

ACC. NO. 30100