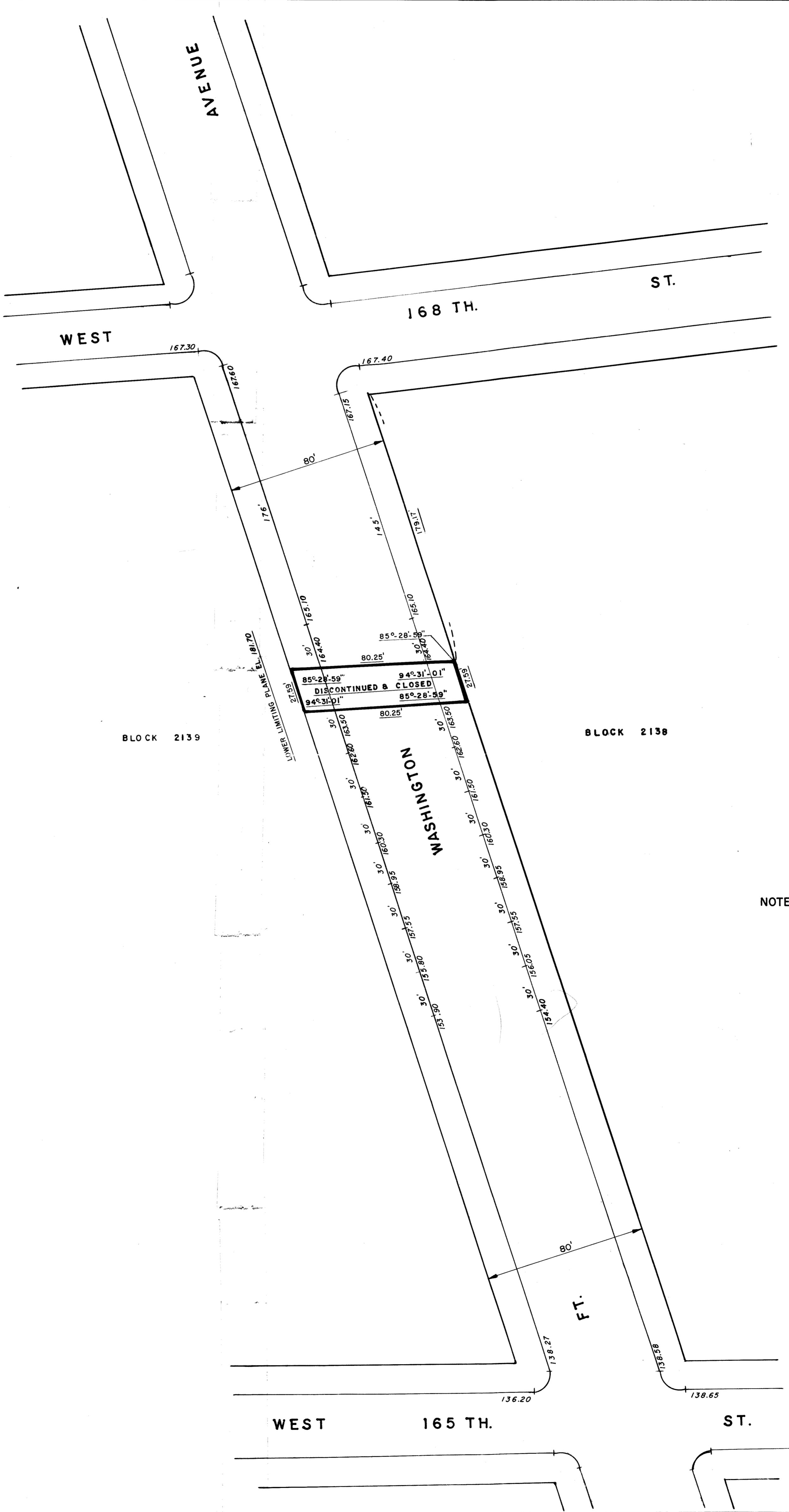
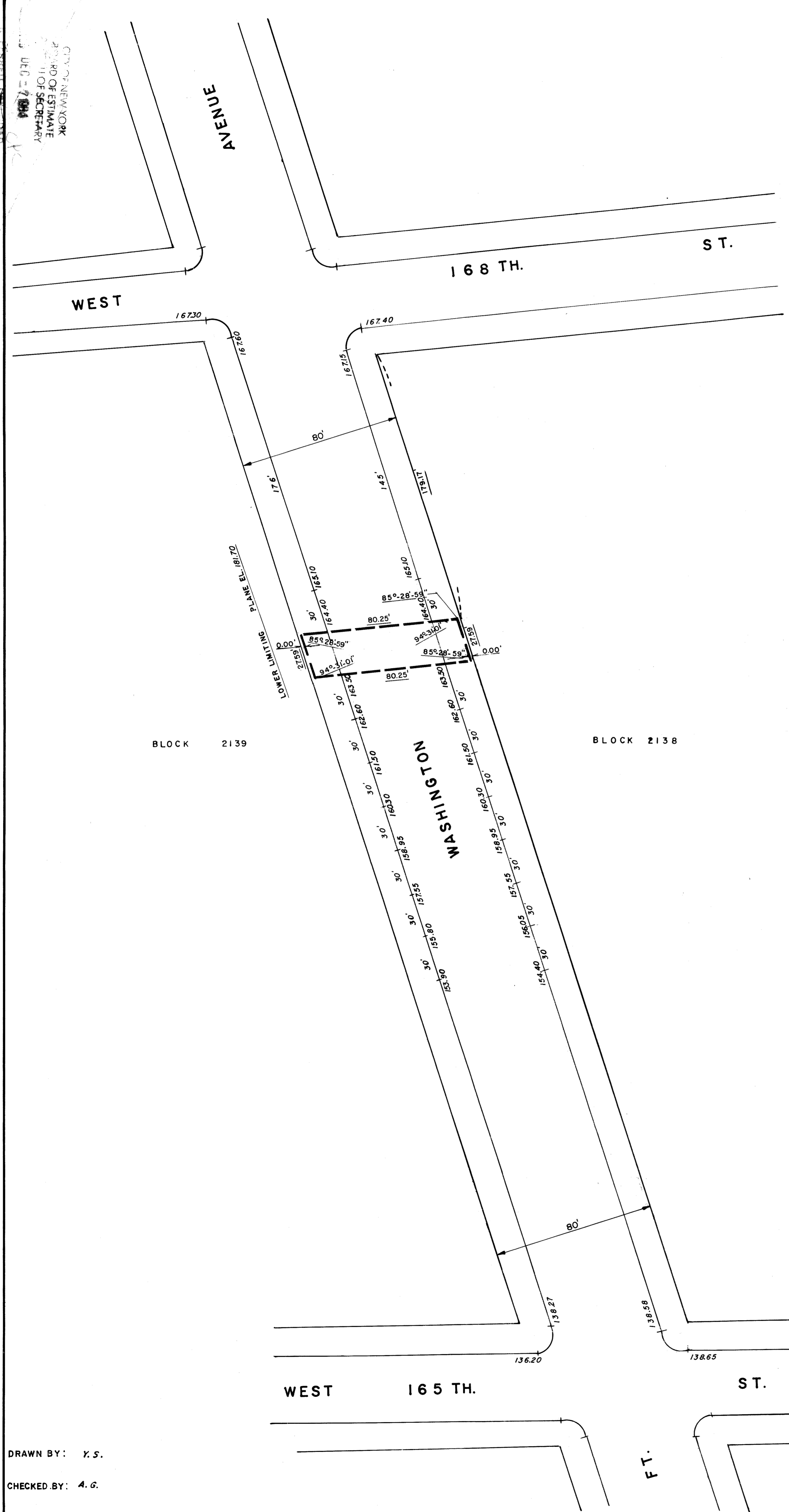


Reg. No. 9570

CITY OF NEW YORK  
BOARD OF ESTIMATE  
OFFICE OF THE SECRETARY  
JUN 11 1985

I, THEODORE MEEKINS SECRETARY OF THE  
BOARD OF ESTIMATE OF THE CITY OF NEW YORK  
DO HEREBY CERTIFY THAT THIS MAP IS ONE OF  
SEVEN SIMILAR MAPS ADOPTED BY THE BOARD  
OF ESTIMATE ON THE 9/13/84, CAL. NO. 19-B  
  
DATED NEW YORK JUNE 11, 1985  
*Theodore Meekins*  
SECRETARY, BOARD OF ESTIMATE



- NOTES**
- INDICATES STREET LINE HERETOFORE ESTABLISHED AND HEREBY RETAINED.
  - INDICATES STREET LINE HEREBY ESTABLISHED
  - - - INDICATES STREET LINE HERETOFORE ESTABLISHED AND HEREBY ELIMINATED
  - 80' INDICATES DIMENSION HERETOFORE ESTABLISHED AND HEREBY RETAINED
  - DISCONTINUED & CLOSED INDICATES STREET TO BE DISCONTINUED AND CLOSED
  - 136.20 INDICATES ELEVATIONS HERETOFORE ESTABLISHED AND HEREBY RETAINED.
  - ELEVATIONS ARE FOR TOP OF CURB AND ARE REFERRED TO THE DATUM OF THE TOPOGRAPHICAL BUREAU BROUGH OF MANHATTAN WHICH IS 2.75 ABOVE THE U.S.C. & G. DATUM AT SANDY HOOK.
  - 30' INDICATES TIE-IN DISTANCES TO ELEVATIONS HERETOFORE ESTABLISHED AND HEREBY RETAINED.
  - 80.25' INDICATES DIMENSION HEREBY ESTABLISHED.

NOTE: THIS DRAWING HAS BEEN REVISED TO REFLECT THE CHANGES MADE BY THE BOARD OF ESTIMATE ON SEPT. 13, 1984, CAL. NO. 19, SUBJECT TO A MAPPING AGREEMENT APPROVED BY THE BOARD OF ESTIMATE ON OCTOBER 4, 1984, CAL. NO. 291.

CITY OF NEW YORK  
OFFICE OF THE BOROUGH PRESIDENT OF MANHATTAN  
TOPOGRAPHICAL BUREAU

MAP SHOWING A CHANGE IN THE CITY MAP  
BY  
ELIMINATING, DISCONTINUING AND CLOSING  
A VOLUME OF FT. WASHINGTON AVE.  
BETWEEN  
W. 165 TH. ST. AND W. 168 TH. ST.  
IN CONNECTION WITH THE SITE  
OF  
THE PRESBYTERIAN HOSPITAL  
IN THE  
BOROUGH OF MANHATTAN

DATED: APRIL 19, 1984 SCALE: 1" = 40'  
*Paul Steiner*  
PRESIDENT, BOROUGH OF MANHATTAN  
*Anthony C. G. [Signature]* 4/19/84  
DIRECTOR, TOPOGRAPHICAL BUREAU

DRAWN BY: Y.S.  
CHECKED BY: A.G.

REVISED: DEC. 11, 1984

Drawn 40

Filed in the office of the Borough President Manhattan 6-11-85 Harvey A. Kleiman

ACC.# 30099