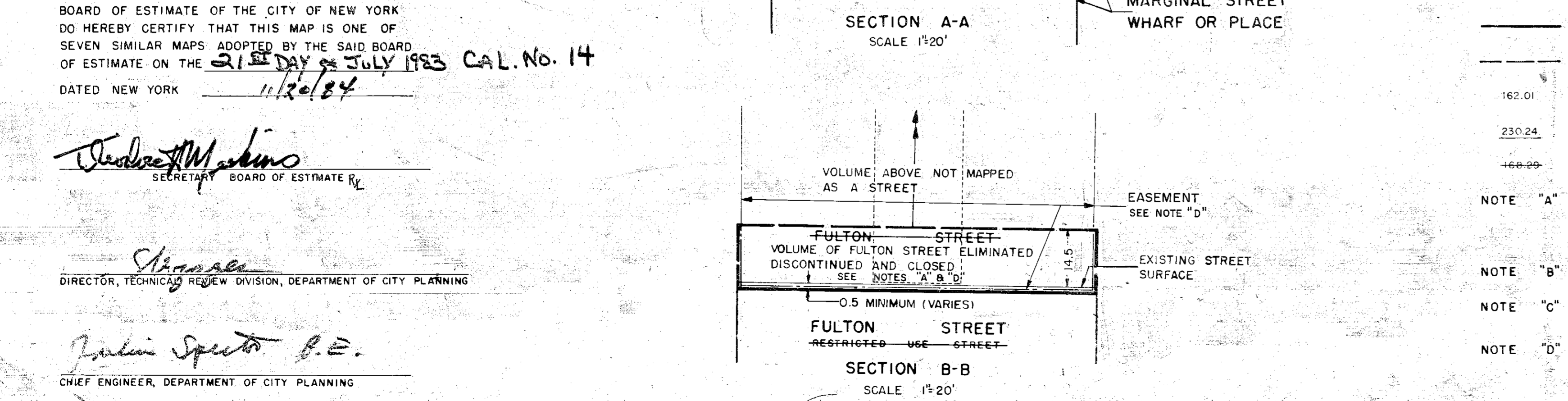
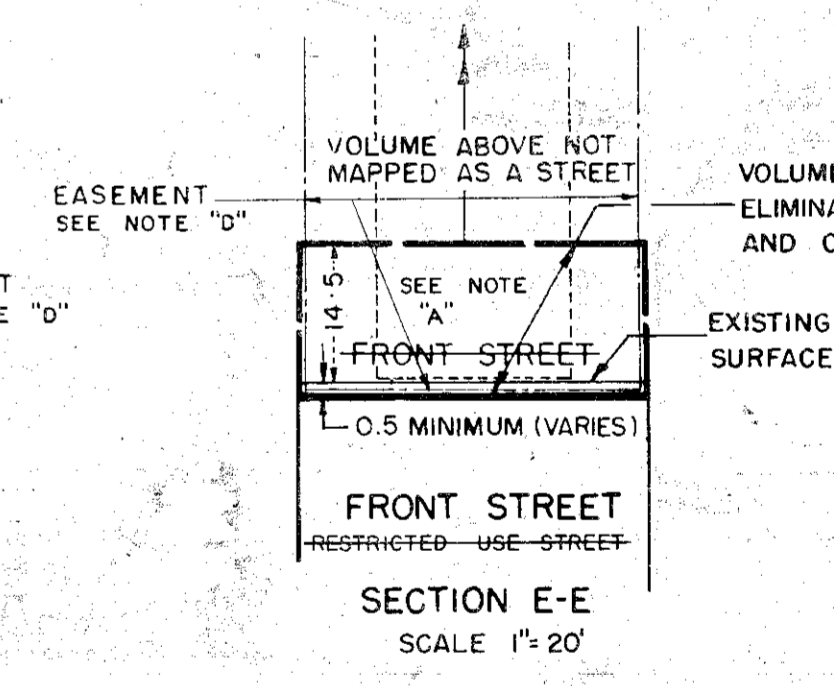
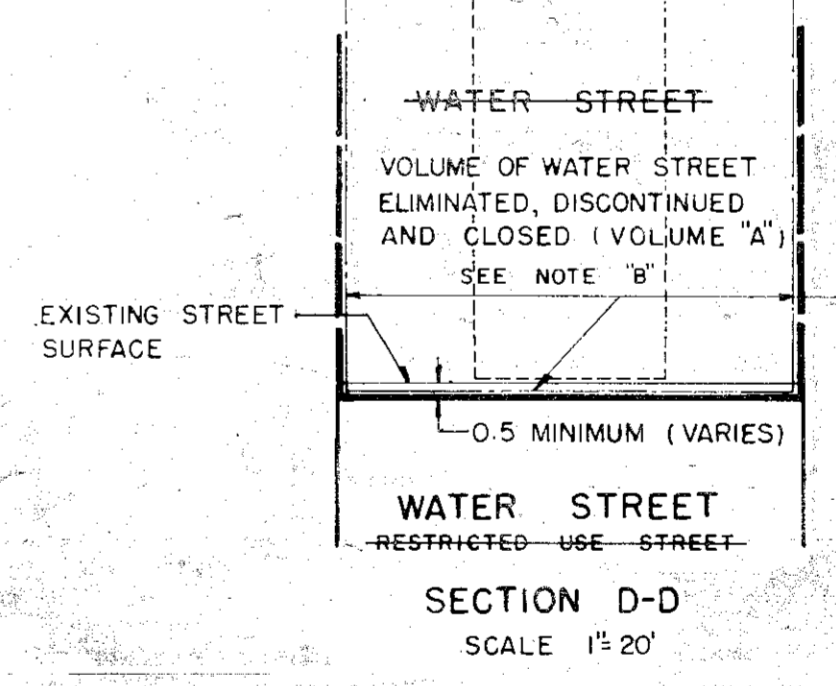
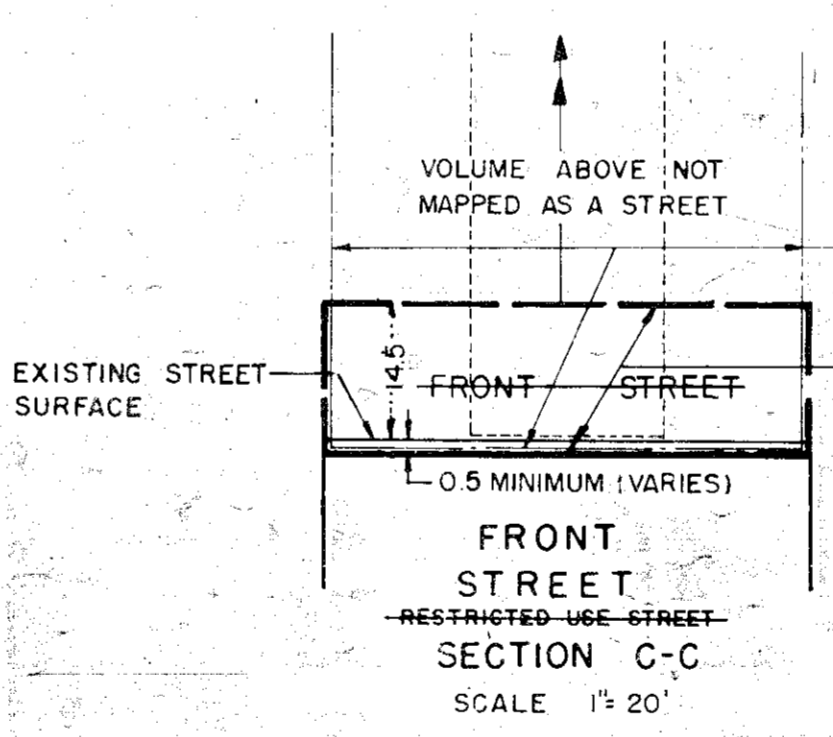
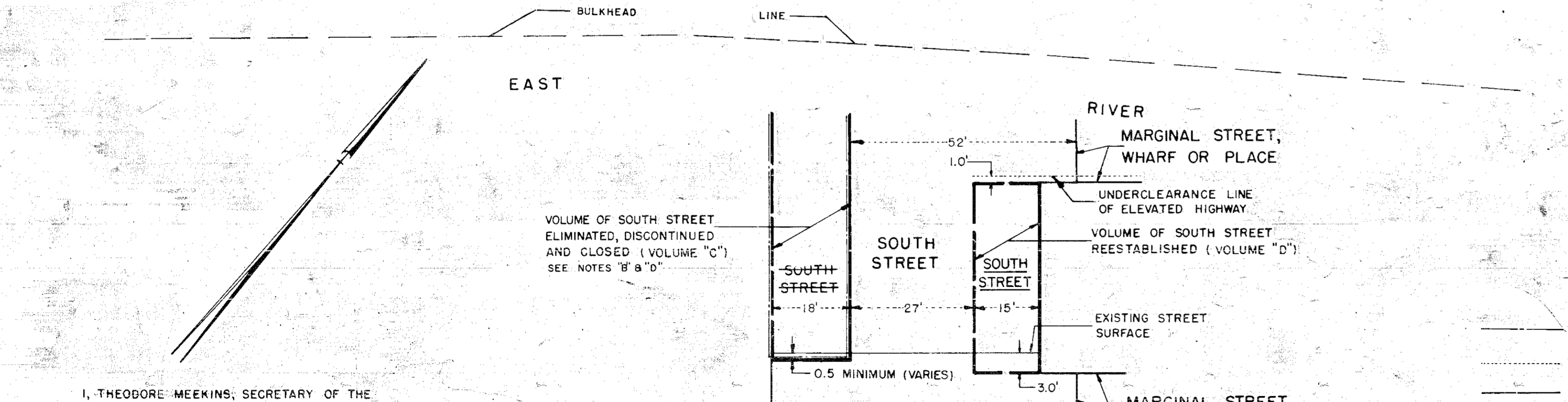


VOLUMES AROUND EXISTING COLUMNS ARE INCLUDED IN STREET AND/OR MARGINAL STREET LANDS (SEE ACC. NO. 30018). PLAN SHOWING ELIMINATION OF VOLUMES OF STREETS; REESTABLISHING A PORTION OF SOUTH STREET AND ELIMINATION OF RESTRICTED USE STREETS

PLAN SHOWING STREETS TO BE DISCONTINUED AND CLOSED



- LEGEND**
- INDICATES EASEMENT DESCRIBED IN NOTE "D" BELOW.
 - INDICATES TWENTY-FOOT-WIDE EASEMENT FOR EMERGENCY VEHICLES EXTENDING FROM STREET SURFACE UPWARDS, RETAINED BY THE CITY OF NEW YORK.
 - INDICATES STREET LINE HERETOFORE ESTABLISHED AND HEREBY RETAINED.
 - INDICATES STREET LINE HEREBY ESTABLISHED.
 - INDICATES STREET LINE HERETOFORE ESTABLISHED AND HEREBY ELIMINATED ABOVE SUBSURFACE GRADES.
 - 162.01 INDICATES DIMENSION HERETOFORE ESTABLISHED AND HEREBY RETAINED.
 - 230.24 INDICATES DIMENSION HEREBY ESTABLISHED.
 - 166.89 INDICATES DIMENSION HERETOFORE ESTABLISHED AND HEREBY ELIMINATED.
- NOTE "A"** STREETS TO BE ELIMINATED, DISCONTINUED AND CLOSED FROM SUBSURFACE GRADES HEREBY ESTABLISHED, TO 14.5 FEET ABOVE FORMER STREET GRADES. [NOTE: THESE STREETS DO NOT EXIST ABOVE 14.5 FEET ABOVE FORMER STREET GRADES. REFER TO ACC. NO. 30018 (CP-21972) AND ACC. NO. 30068 (800187 MMM).]
- NOTE "B"** STREET TO BE ELIMINATED, DISCONTINUED AND CLOSED ABOVE SUBSURFACE GRADES HEREBY ESTABLISHED.
- NOTE "C"** VOLUME OF STREET REESTABLISHED BETWEEN 3.0 FEET BELOW STREET GRADE TO 1.0 FOOT BELOW UNDERCLEARANCE LINE OF ELEVATED HIGHWAY.
- NOTE "D"** EASEMENT RETAINED BY, OR CONVEYED TO, THE CITY OF NEW YORK, ABOVE SUBSURFACE GRADES HEREBY ESTABLISHED, FOR PUBLIC PEDESTRIAN CIRCULATION AND THE CONTAINMENT AND MAINTENANCE OF UTILITIES (BOUNDARIES THUS SHOWN IN PLAN VIEW). THAT PORTION OF THE EASEMENT SPACE LYING BETWEEN THE EXISTING STREET SURFACE AND A PLANE 20.0 FEET ABOVE SAID STREET SURFACE SHALL REMAIN UNOBSTRUCTED FOR UTILITY MAINTENANCE PURPOSES.

I, THEODORE MEEKINS, SECRETARY OF THE BOARD OF ESTIMATE OF THE CITY OF NEW YORK DO HEREBY CERTIFY THAT THIS MAP IS ONE OF SEVEN SIMILAR MAPS ADOPTED BY THE SAID BOARD OF ESTIMATE ON THE 21ST DAY OF JULY 1983 CAL. No. 14 DATED NEW YORK 11/20/84

Theodore MEEKINS
SECRETARY, BOARD OF ESTIMATE

Shannon
DIRECTOR, TECHNICAL REVIEW DIVISION, DEPARTMENT OF CITY PLANNING

Julian Specter, P.E.
CHIEF ENGINEER, DEPARTMENT OF CITY PLANNING

DRAWN BY H.Y.
CHECKED BY E.F.S.

CITY OF NEW YORK
CITY PLANNING COMMISSION
MAP NO. 830356 MMM

MAP SHOWING A CHANGE IN THE CITY MAP BY ELIMINATING, DISCONTINUING, AND CLOSING VOLUMES OF FULTON STREET, FRONT STREET, WATER STREET AND SOUTH STREET, BY ESTABLISHING SUBSURFACE GRADES, BY REESTABLISHING A PORTION OF SOUTH STREET BETWEEN BEEKMAN STREET AND FLETCHER STREET, BY ELIMINATING RESTRICTED USE STREET DESIGNATIONS, AND BY DELINEATING EASEMENTS FOR PUBLIC PEDESTRIAN CIRCULATION, UTILITIES AND MAINTENANCE THEREOF, ALL IN CONNECTION WITH THE SOUTH STREET SEAPORT MUSEUM, BOROUGH OF MANHATTAN.

DATED: MARCH 14, 1983
AMENDED: JUNE 6, 1983
CORRECTED: MARCH 21, 1984

Harold R. Ruse
DIRECTOR OF CITY PLANNING AND CHAIRMAN, CITY PLANNING COMMISSION

PREPARED BY
EARL B. LOVELL - S. P. BELCHER, INC.

Benjamin D. Saelberg

SCALE 1" = 50'

SHEET 1 OF 2

Filed in the office of the Borough President Manhattan 11-30-84
Harry A. Roldman

TERMS AND CONDITIONS GOVERNING THE USE AND MAINTENANCE OF THESE EASEMENTS AND CONTAINED FACILITIES WILL BE STATED IN DOCUMENTS WHICH ARE TO BE KEPT ON FILE AT NEW YORK COUNTY REGISTER'S OFFICE.

CITY SURVEYOR: 71 MURRAY STREET
VICE PRESIDENT: NEW YORK, N.Y. 10007
ACC. NO. 30089

(C)

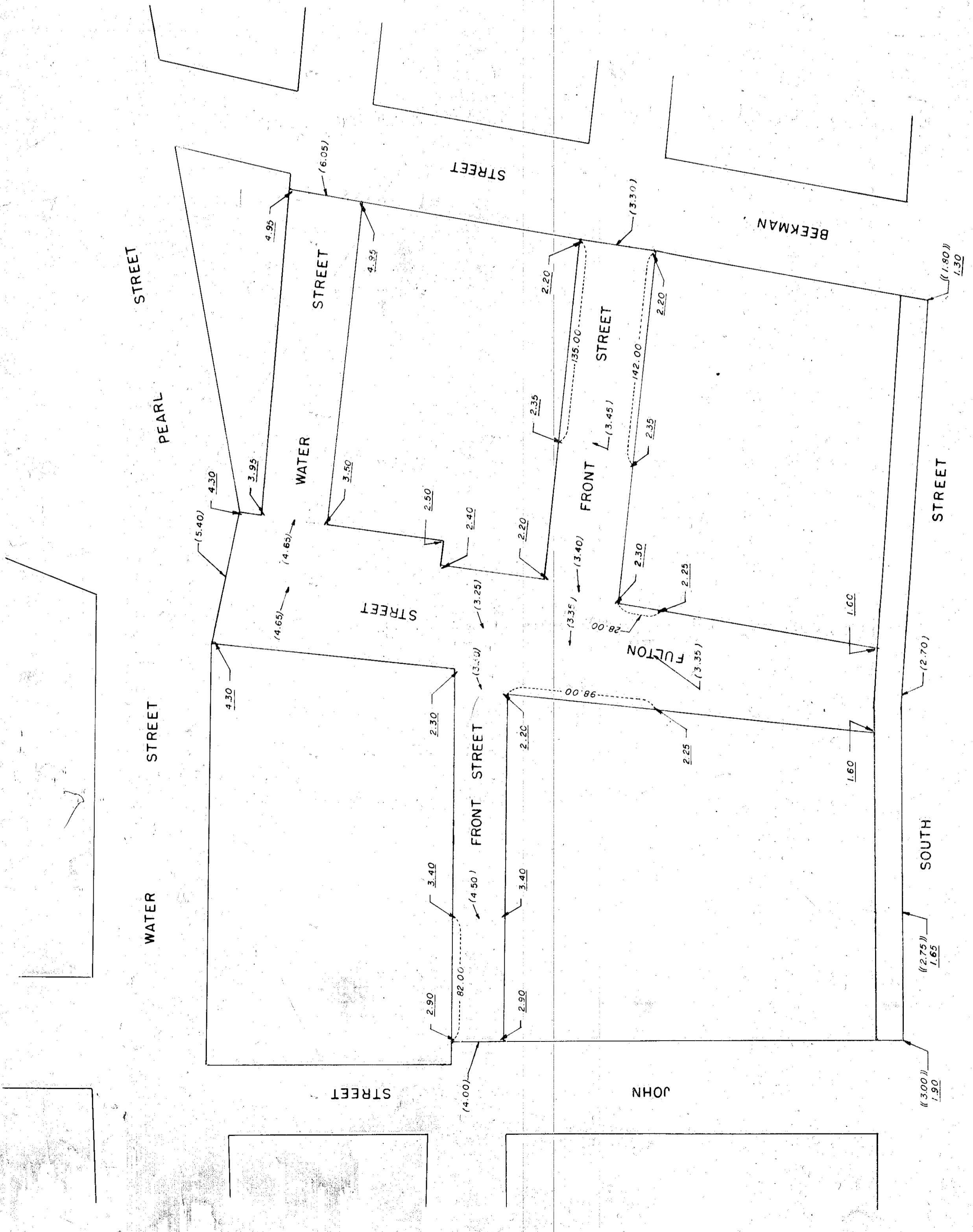
Beekman Street

*Filed in the office of the Borough President in Manhattan 11-30-84
Harry A. Rinderman*

Drawn 48

CITY OF NEW YORK
CITY PLANNING COMMISSION

MAP SHOWING A CHANGE IN THE CITY MAP
IN CONNECTION WITH THE SOUTH STREET SEAPORT MUSEUM,
BOROUGH OF MANHATTAN.



LEGEND.
 (3.00) INDICATES ELEVATION AT GUTTER OF EXISTING STREET
 (3.50) INDICATES ELEVATION AT CROWN OF EXISTING STREET
 3.00 INDICATES SUBSURFACE ELEVATION HEREBY ESTABLISHED
 ELEVATIONS REFER TO DATUM USED BY THE TOPOGRAPHICAL BUREAU, BOROUGH OF MANHATTAN, WHICH IS 275 FEET ABOVE UNITED STATES COAST AND GEODETIC SURVEY DATUM, MEAN SEA LEVEL, SANDY HOOK, NEW JERSEY.

