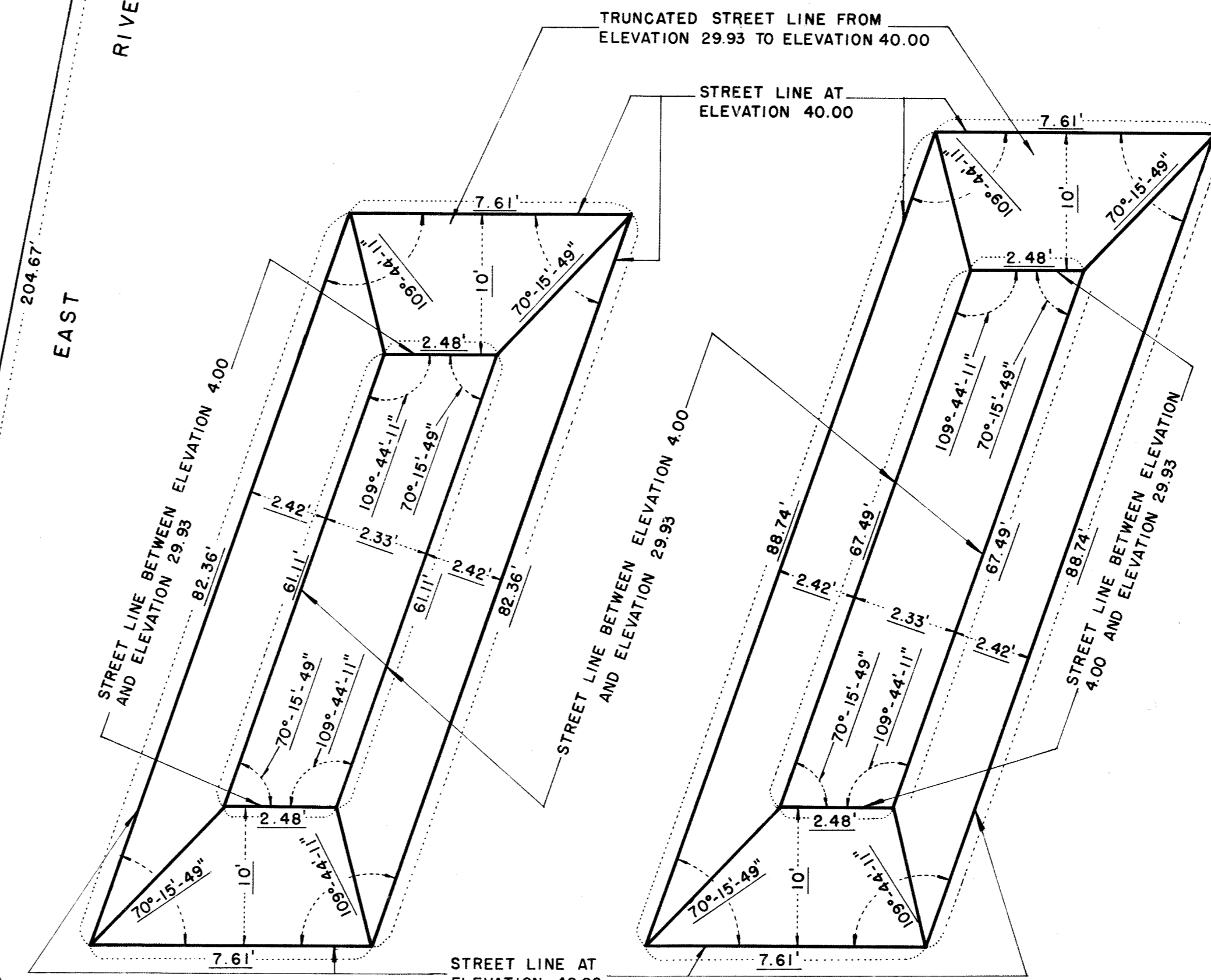


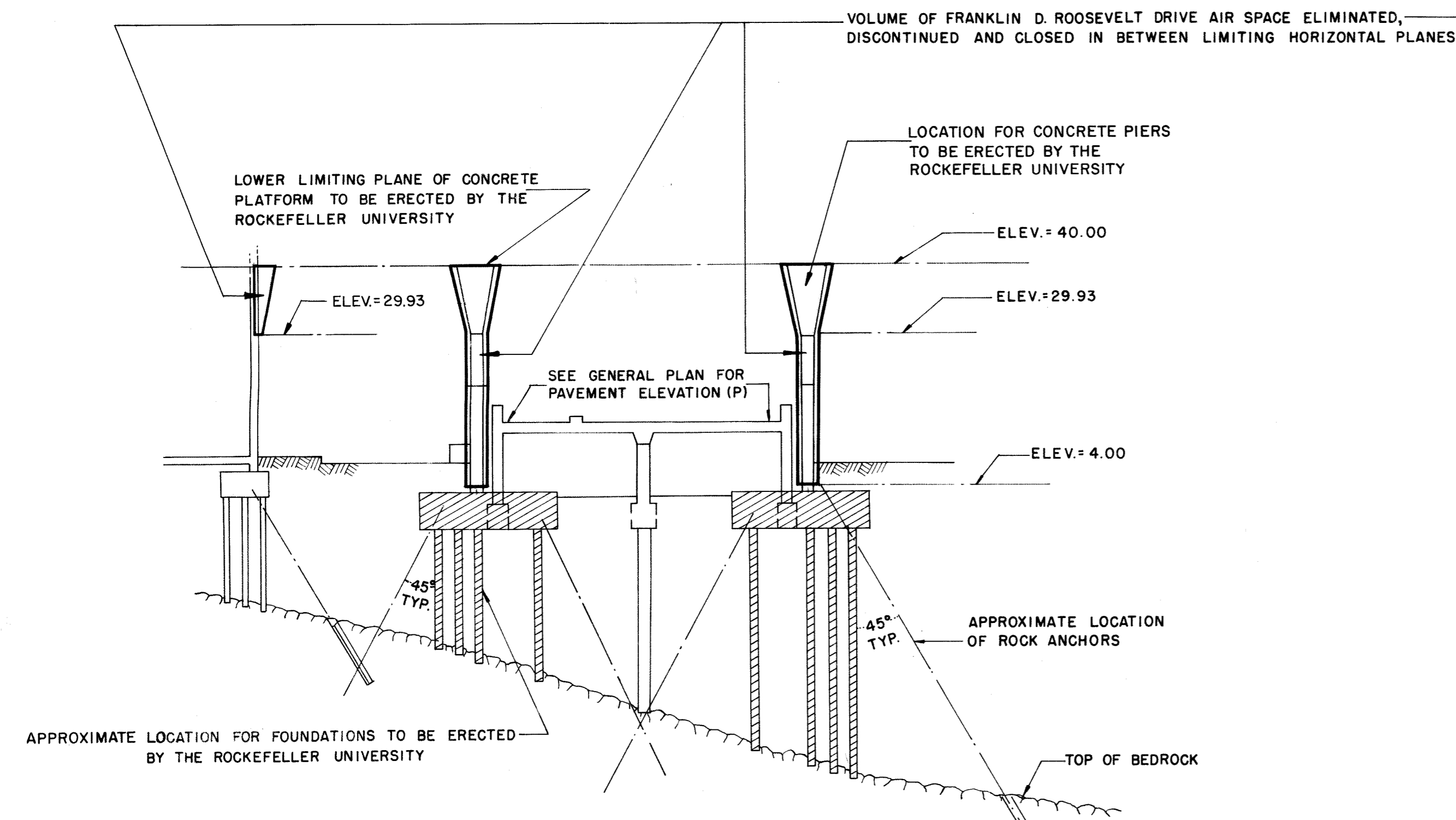
GENERAL PLAN
(SCALE: 1" = 30')



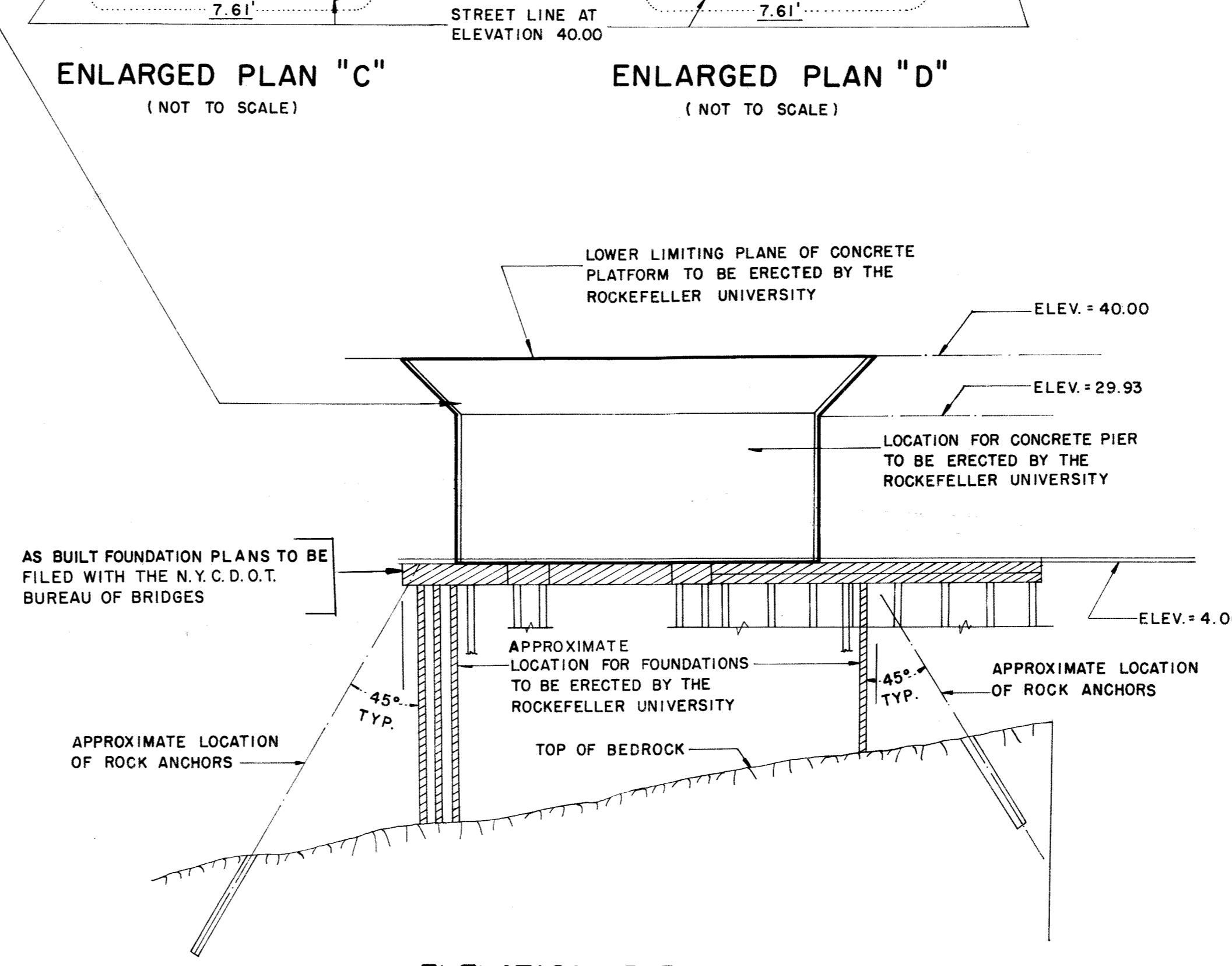
ENLARGED PLAN "C"
(NOT TO SCALE)

ENLARGED PLAN "D"
(NOT TO SCALE)

- NOTES**
- INDICATES STREET LINE HERETOFORE ESTABLISHED AND HEREBY RETAINED
 - INDICATES STREET LINE HEREBY ESTABLISHED
 - 60' INDICATES DIMENSION HERETOFORE ESTABLISHED AND HEREBY RETAINED
 - 100' INDICATES DIMENSION HEREBY ESTABLISHED
 - ▭ INDICATES STREET OR EASEMENT LINES HEREBY ELIMINATED, DISCONTINUED AND CLOSED
 - - - INDICATES STREET LINE HERETOFORE ELIMINATED, DISCONTINUED AND CLOSED ABOVE ELEVATION 40.00
 - - - INDICATES PUBLIC PEDESTRIAN WALKWAY EASEMENT HERETOFORE ESTABLISHED
- ALL ELEVATIONS ARE REFERRED TO THE DATUM OF THE TOPOGRAPHICAL BUREAU, BOROUGH OF MANHATTAN, WHICH IS 2.75 FEET ABOVE THE U.S.C. & G. DATUM AT SANDY HOOK, NEW JERSEY.
- CERTAIN AREAS SHOWN ON THIS MAP ARE SUBJECT TO THE TERMS OF AN AGREEMENT DATED MARCH 22, 1973, AND RECORDED IN THE OFFICE OF THE REGISTER COUNTY OF NEW YORK, APRIL 20, 1973, REEL 475 PAGE 1397, AMONG THE CITY OF NEW YORK, THE SOCIETY OF THE NEW YORK HOSPITAL, NEW YORK SOCIETY FOR THE RELIEF OF THE RUPTURED AND CRIPPLED AND THE ROCKEFELLER UNIVERSITY.
- ▨ EASEMENTS ESTABLISHED IN THE F.D.R. DRIVE FOR SUBSURFACE AND COLUMNAR STRUCTURES TO SUPPORT IMPROVEMENTS IN THE ROCKEFELLER UNIVERSITY SPACE.
- (P) INDICATES EXISTING ELEVATIONS AT TOP HIGHWAY PAVEMENT



SECTION A-A
(NOT TO SCALE)



ELEVATION B-B
(NOT TO SCALE)

CITY OF NEW YORK
OFFICE OF THE BOROUGH PRESIDENT OF MANHATTAN
TOPOGRAPHICAL BUREAU

MAP SHOWING A CHANGE IN THE CITY MAP BY
ELIMINATING, DISCONTINUING AND CLOSING
VOLUMES OF STREET AND PUBLIC EASEMENT SPACE
AND
BY SHOWING THE APPROXIMATE LOCATION
OF FOUNDATION EASEMENTS FOR THE
ROCKEFELLER UNIVERSITY
IN
THE AREA GENERALLY BOUNDED BY
YORK AVENUE, THE EAST RIVER,
EAST 62 ND. STREET, AND THE NORTHERLY
LINE OF A PUBLIC EASEMENT TWENTY
FEET NORTH OF EAST 63 RD. STREET
BOROUGH OF MANHATTAN
IN CONNECTION
WITH THE CONSTRUCTION OF
A STAFF HOUSING TOWER FOR
THE ROCKEFELLER UNIVERSITY
BOROUGH OF MANHATTAN

I, THEODORE MEEKINS, SECRETARY OF THE BOARD OF ESTIMATE OF THE CITY OF NEW YORK DO HEREBY CERTIFY THAT THIS MAP IS ONE OF SEVEN SIMILAR MAPS ADOPTED BY THE BOARD OF ESTIMATE ON THE 15th DAY OF DECEMBER 1983 CAL. No. 9-B

DATED NEW YORK JANUARY 14, 1985

Theodore Meekins
SECRETARY, BOARD OF ESTIMATE

Andrew Stein
PRESIDENT, BOROUGH OF MANHATTAN
Anthony C. ...
DIRECTOR, TOPOGRAPHICAL BUREAU

DATED: DECEMBER 28, 1982 SCALE AS SHOWN
REVISED: JAN. 12, 1983-B.P.M. REVISED: FEB. 3, 1983-B.P.M.

PREPARED BY
EARL B. LOVELL - S.P. BELCHER, INC.

Benjamin D. Goldberg

CITY SURVEYOR 71 MURRAY STREET VICE PRESIDENT NEW YORK, N.Y. 10007

Filed in the office of the Borough President Manhattan
1-22-1985 *Harry R. Kleiman*