

BATTERY PARK CITY  
LAND FILL - FUTURE BATTERY PARK CITY

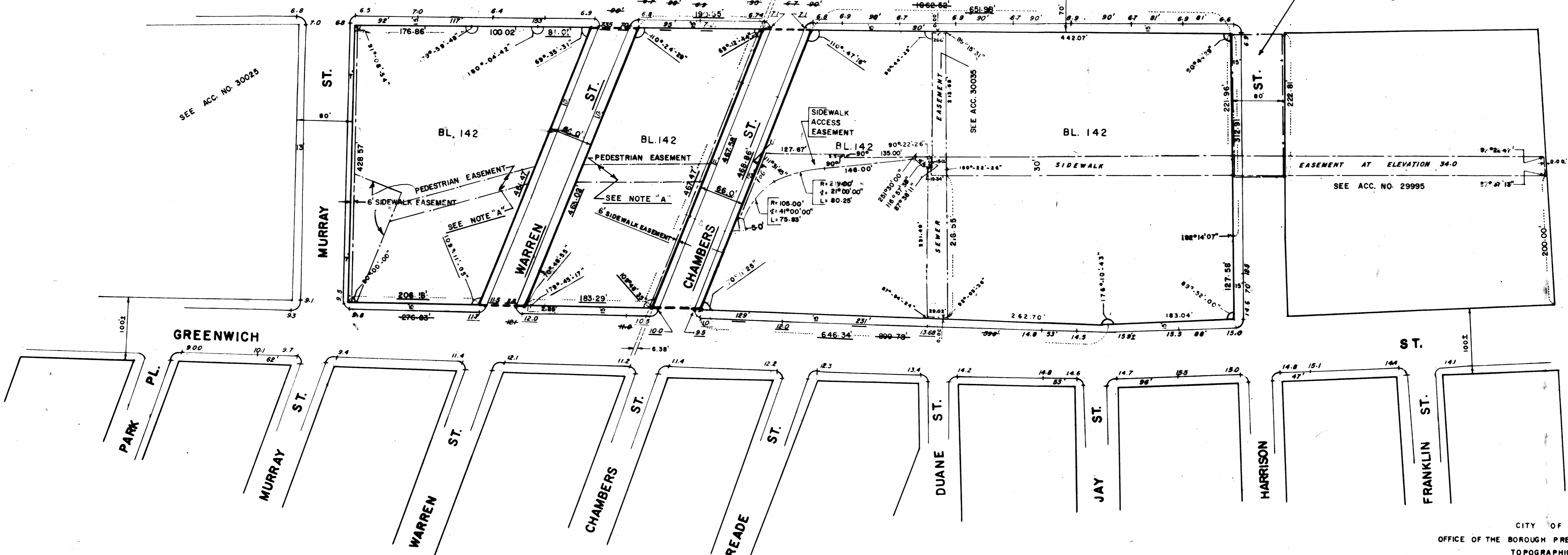
MARGINAL

ST.

VOLUME OF HARRISON ST.  
ELIMINATED ABOVE ELEVATION 28.8  
SEE ACC. NO. 29985

ST.

WEST



NOTES

- INDICATES STREET LINE HERETOFORE ESTABLISHED AND HEREBY RETAINED.
- INDICATES STREET LINE HEREBY ESTABLISHED.
- INDICATES STREET LINE HERETOFORE ESTABLISHED AND HEREBY ELIMINATED.
- 428.57' INDICATES DIMENSION HERETOFORE ESTABLISHED AND HEREBY RETAINED.
- 184.60' INDICATES DIMENSION HEREBY ESTABLISHED.
- 11.4' INDICATES ELEVATION HEREBY ESTABLISHED.
- INDICATES SIDEWALK EASEMENT.
- INDICATES SEWER EASEMENT.
- ELEVATIONS ARE FOR TOP OF CURB AND ARE REFERRED TO THE DATUM OF THE TOPOGRAPHICAL BUREAU, BOROUGH OF MANHATTAN WHICH IS 2.75' ABOVE THE U.S. C. & G. SURVEY DATUM AT SANDY HOOK.
- 11.2 INDICATES ELEVATION HERETOFORE ESTABLISHED AND HEREBY RETAINED.
- 88' INDICATES TIE-IN DISTANCES TO ELEVATIONS HEREBY ESTABLISHED.

NOTE "A"

ADDITIONAL PEDESTRIAN EASEMENTS WILL BE ESTABLISHED ON THIS BLOCK PURSUANT TO THE WASHINGTON STREET URBAN RENEWAL PLAN

EASEMENTS ARE SHOWN FOR INFORMATIONAL PURPOSES ONLY AND ARE NOT A PART OF THE CITY MAP.

CITY OF NEW YORK  
OFFICE OF THE BOROUGH PRESIDENT OF MANHATTAN  
TOPOGRAPHICAL BUREAU

MAP SHOWING A CHANGE IN THE CITY MAP  
BY  
LAYING OUT THE LINES AND GRADES  
OF  
WARREN ST. AND CHAMBERS ST.  
BETWEEN  
GREENWICH ST. AND WEST ST.  
IN CONNECTION WITH THE SITE  
OF THE  
WASHINGTON ST. URBAN RENEWAL PROJECT  
IN THE  
BOROUGH OF MANHATTAN

DATED: OCTOBER 28, 1986 SCALE: 1" = 80'

PRESIDENT, BOROUGH OF MANHATTAN  
*Anthony J. ...* P.E.  
DIRECTOR, TOPOGRAPHICAL BUREAU

I, THEODORE MEEKINS, SECRETARY OF THE BOARD OF ESTIMATE OF THE CITY OF NEW YORK DO HEREBY CERTIFY THAT THIS MAP IS ONE OF SEVEN SIMILAR MAPS ADOPTED BY THE BOARD OF ESTIMATE ON THE 23rd Day of November, 1986 (Cal #160)

DATED NEW YORK 2-23-88

*Theodore Meekins*  
SECRETARY BOARD OF ESTIMATE

DRAWN BY Y.S.

CHECKED BY *AS*

# 30077R