

NOTES

- A. STREET TO BE DISCONTINUED AND CLOSED BELOW A PLANE 14.5 FEET ABOVE STREET GRADE. FORMER STREET VOLUME ABOVE A PLANE 14.5 FEET ABOVE STREET GRADE, DISCONTINUED AND CLOSED AS SHOWN ON MAP ACC. NO. 30018, ADOPTED MAY 24, 1973, CAL. 307A
- B. FOR THIS AREA SEE MAP ACC. NO. 30018 DATED APRIL 24, 1972
- C. A "RESTRICTED USE STREET" IS CLOSED TO ALL VEHICLES EXCEPT: (A) THOSE WHICH ARE USED FOR LOADING OR UNLOADING AT A PREMISES FRONTING THE STREET; (B) A FRANCHISED OMNIBUS; (C) MAINTENANCE VEHICLES; (D) EMERGENCY VEHICLES (REF: NEW YORK CITY TRAFFIC REGULATIONS, SECTION 159 B)
- D. EASEMENT FOR EXISTING WATER, SEWER AND UTILITY LINES. EASEMENT TO BE AUTOMATICALLY EXTINGUISHED UPON REMOVAL OF SAID WATER, SEWER AND UTILITY LINES.

LEGEND

- INDICATES STREET LINE HERETOFORE ESTABLISHED AND HEREBY RETAINED.
- INDICATES STREET LINE HEREBY ESTABLISHED.
- INDICATES STREET LINE HERETOFORE ESTABLISHED AND HEREBY ELIMINATED.
- 162.01' INDICATES DIMENSION HERETOFORE ESTABLISHED AND HEREBY RETAINED.
- 230.24' INDICATES DIMENSION HEREBY ESTABLISHED.
- 160.29' INDICATES DIMENSION HERETOFORE ESTABLISHED AND HEREBY ELIMINATED.
- [] INDICATES BOUNDARIES OF AREA WITHIN WHICH THE STREET IS DESIGNATED AS A RESTRICTED USE STREET BELOW A PLANE 14.5' ABOVE STREET GRADE. [WITHIN THIS AREA STREET DOES NOT EXIST ABOVE 14.5' ABOVE STREET GRADE]
- [] INDICATES STREET VOLUME TO BE DISCONTINUED AND CLOSED
- INDICATES LINE OF EASEMENT HEREBY DELINEATED
- INDICATES LINE OF EASEMENT HERETOFORE DELINEATED AND HEREBY RETAINED OR EXTINGUISHED

CITY OF NEW YORK CITY PLANNING COMMISSION

MAP

SHOWING A CHANGE IN THE CITY MAP

BY ELIMINATING, DISCONTINUING, AND CLOSING VOLUMES OF FULTON STREET; BY LAYING OUT A NEW STREET (FRONT STREET); BY DESIGNATING SEVERAL RESTRICTED USE STREETS; BY WIDENING JOHN STREET AND BY REALIGNING AND NARROWING PORTIONS OF FULTON STREET, BY ELIMINATING FOUNDATION AND SIDEWALK EASEMENTS; AND BY LAYING OUT UTILITY EASEMENTS ALL WITHIN THE AREA GENERALLY BOUNDED BY JOHN STREET, WATER STREET, BEEKMAN STREET, AND SOUTH STREET.

BOROUGH OF MANHATTAN

Earl E. Wilkerson
 I, THEODORE MEEKINS, SECRETARY OF THE BOARD OF ESTIMATE OF THE CITY OF NEW YORK DO HEREBY CERTIFY THAT THIS MAP IS ONE OF SEVEN SIMILAR MAPS ADOPTED BY THE SAID BOARD OF ESTIMATE ON THE 13TH DAY OF NOVEMBER 1980, CAL. 307A

DATED NEW YORK July 29, 1981

Earl E. Wilkerson
 ACTING SECRETARY BOARD OF ESTIMATE

Richard Kern, P.E.
 DIRECTOR OF MAPPING, DEPT OF CITY PLANNING

Julius Spitzer, P.E.
 CHIEF ENGINEER, DEPT OF CITY PLANNING

PLANNED BY THE OFFICE OF THE PERM. BOARD. FILED
[Signature]

DATED: SEPTEMBER 19, 1980

SCALE: 1" = 50'

Martin Gallant
 VICE-CHAIRMAN, CITY PLANNING COMMISSION

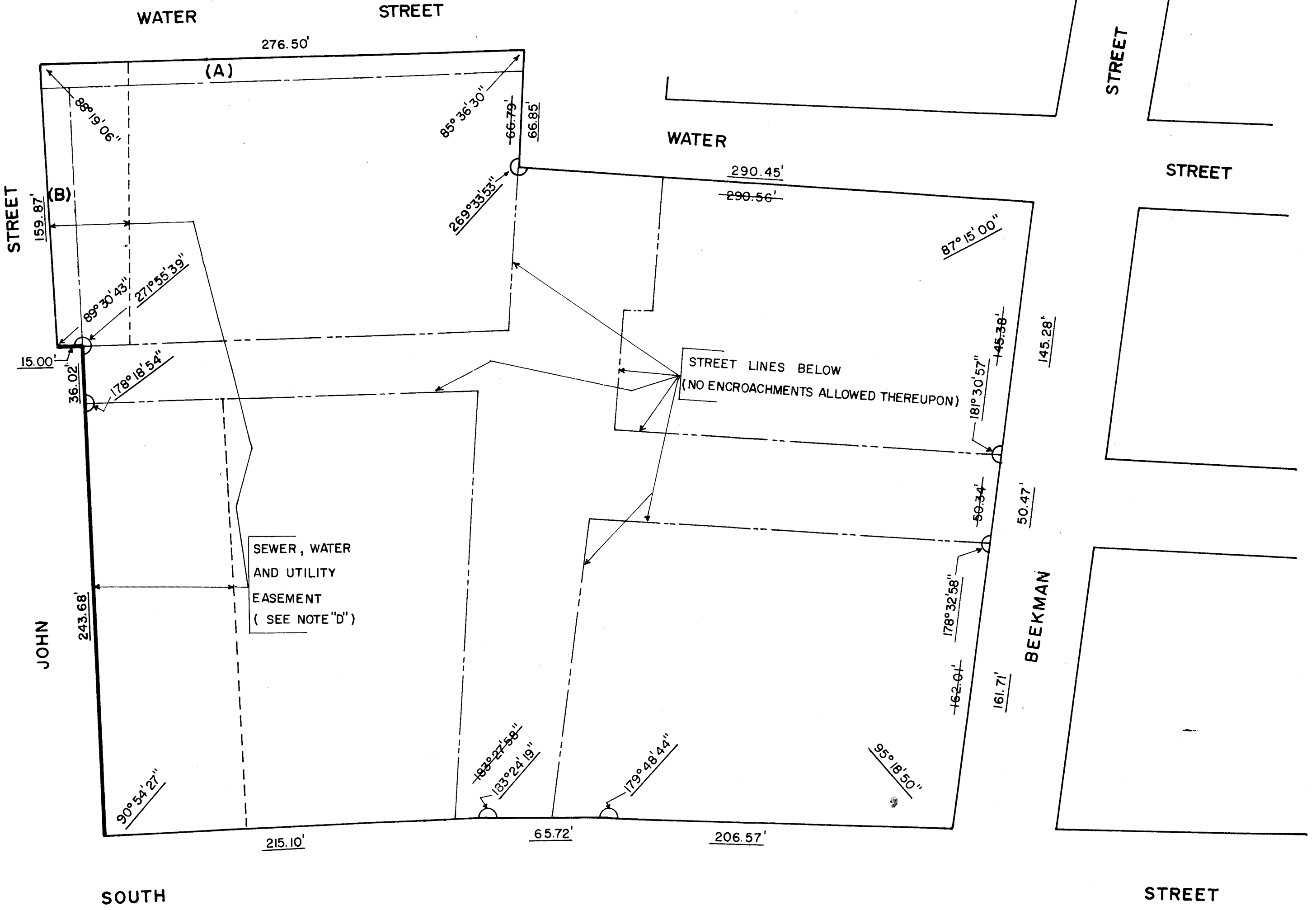
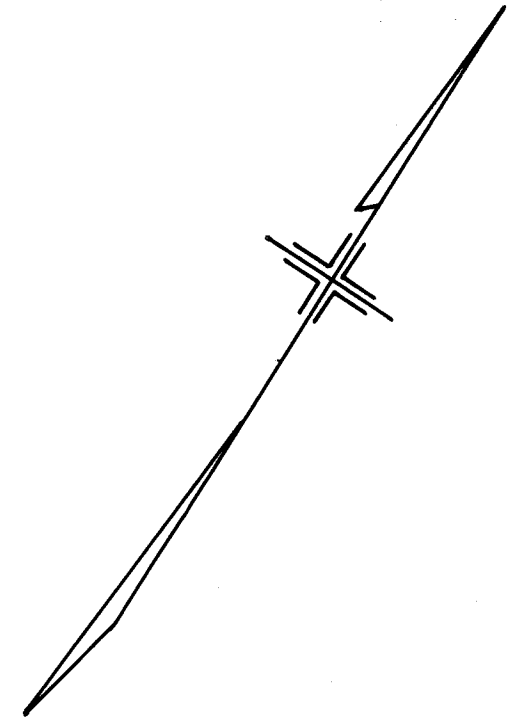


PLAN AT OR ABOVE A PLANE OF
ELEVATION 14.5 FEET ABOVE STREET GRADE

NOTE

- FOR LOCATION OF UNDIMENSIONED LINES SEE AT-GRADE PLAN ON SHEET 1.
- SIDEWALK EASEMENT (A) HAS UPPER LIMITING PLANE LOCATED AT A MINIMUM OF 20 FEET ABOVE LEGAL STREET GRADE.
- SIDEWALK EASEMENT (B) AND THE SEWER, WATER AND UTILITY EASEMENTS HAVE NO UPPER LIMITING PLANE.

(C)



PLANNED BY THE OFFICE OF THE PRES. BORO. L.A.

(C)

SCALE : 1" = 50'

ACC. NO. 30068

C800187MMM 2 OF 2