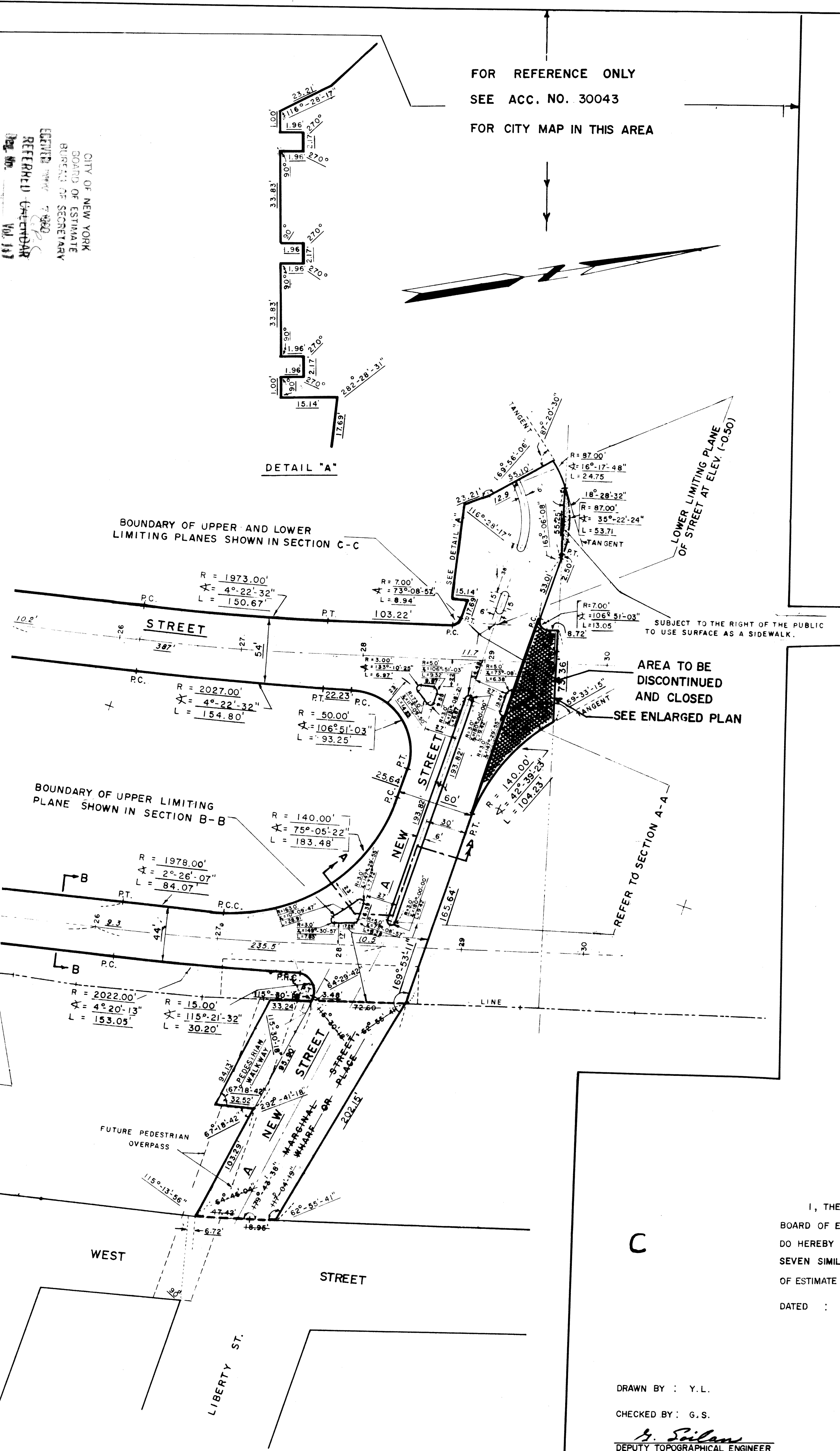


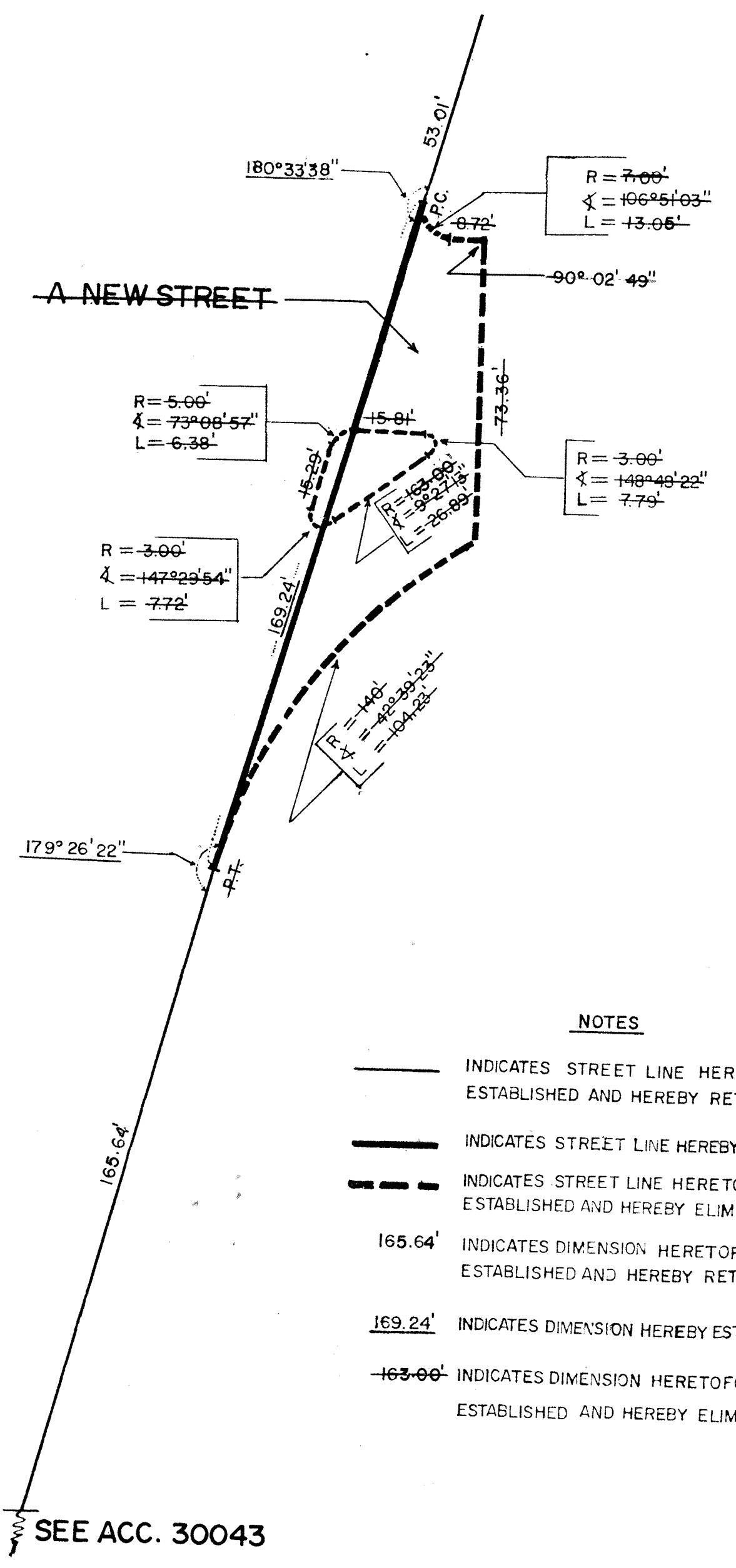
CITY OF NEW YORK
 BOARD OF ESTIMATE
 BUREAU OF TOPOGRAPHICAL ENGINEERS
 REFERENCE CHANGING
 MAP NO. 117

FOR REFERENCE ONLY
 SEE ACC. NO. 30043
 FOR CITY MAP IN THIS AREA



DETAIL "A"

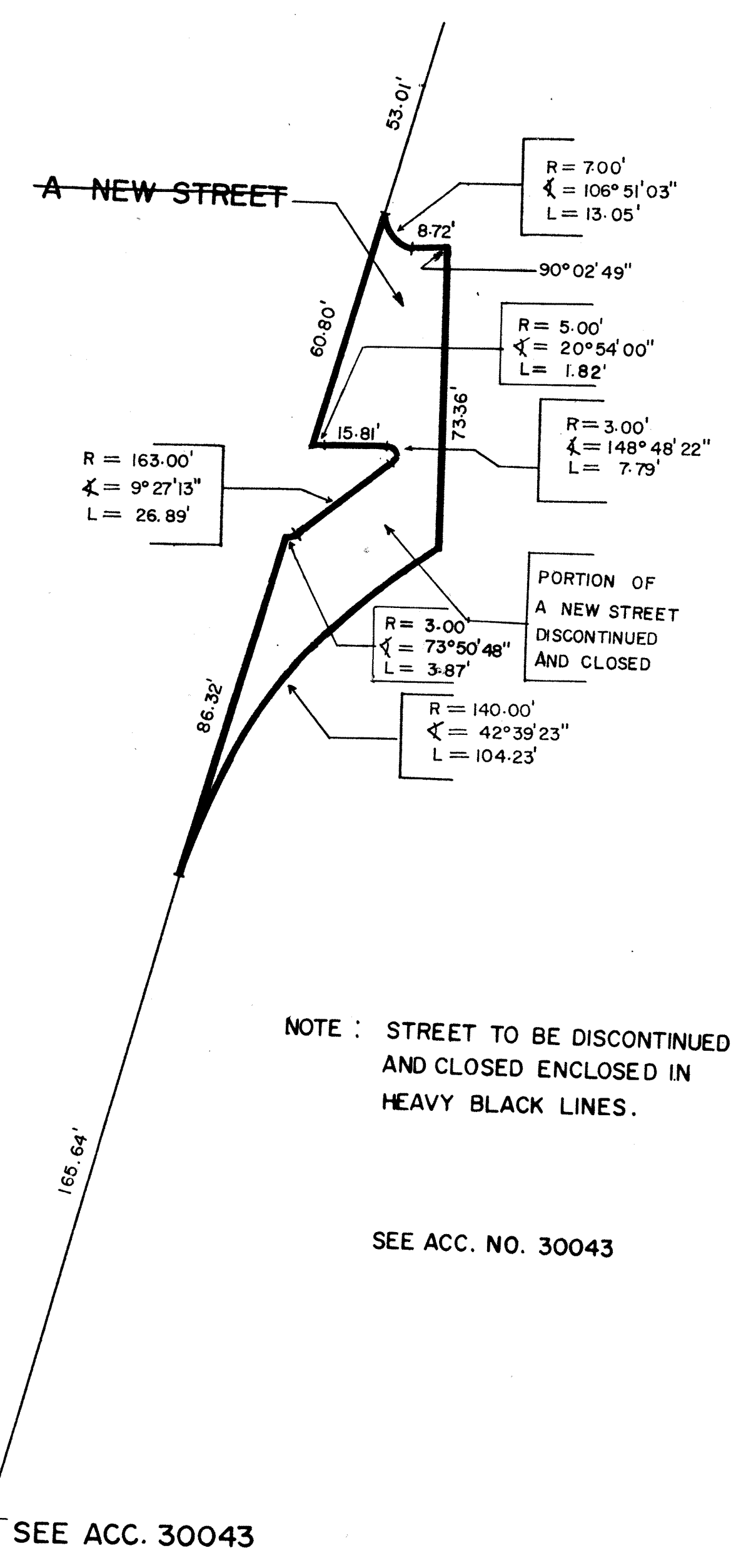
SEE ACC. 30043



NOTES

- INDICATES STREET LINE HERETOFORE ESTABLISHED AND HEREBY RETAINED
- INDICATES STREET LINE HEREBY ESTABLISHED
- - - INDICATES STREET LINE HERETOFORE ESTABLISHED AND HEREBY ELIMINATED
- 165.64' INDICATES DIMENSION HERETOFORE ESTABLISHED AND HEREBY RETAINED
- 169.24' INDICATES DIMENSION HEREBY ESTABLISHED
- 163.00' INDICATES DIMENSION HERETOFORE ESTABLISHED AND HEREBY ELIMINATED

SEE ACC. 30043



NOTE: STREET TO BE DISCONTINUED AND CLOSED ENCLOSED IN HEAVY BLACK LINES.

SEE ACC. NO. 30043

THIS MAP AMENDS MAP ACC. NO. 30043 AS SHOWN ABOVE

CITY OF NEW YORK
 OFFICE OF THE PRESIDENT BUREAU OF TOPOGRAPHICAL ENGINEERS
 BOROUGH OF MANHATTAN

MAP SHOWING A CHANGE IN THE CITY MAP
 BY
 ELIMINATING, DISCONTINUING AND CLOSING
 A PORTION OF
 A NEW STREET
 NORTH OF THE WESTERLY
 EXTENSION OF LIBERTY STREET
 BOROUGH OF MANHATTAN

I, THEODORE MEEKINS, SECRETARY OF THE BOARD OF ESTIMATE OF THE CITY OF NEW YORK DO HEREBY CERTIFY THAT THIS MAP IS ONE OF SEVEN SIMILAR MAPS ADOPTED BY THE SAID BOARD OF ESTIMATE ON July 17, 1980 CAL. 12
 DATED : NEW YORK, January 27, 1981
Theodore Meekins
 SECRETARY, BOARD OF ESTIMATE

DRAWN BY : Y.L.
 CHECKED BY : G.S.
G. S. Silman
 DEPUTY TOPOGRAPHICAL ENGINEER

DATED : MARCH 5, 1980 SCALE 1" = 30'

Andrew Sp...
 PRESIDENT, BOROUGH OF MANHATTAN
Anthony C. ...
 DIRECTOR TOPOGRAPHICAL ENGINEER

ACC. 30066