

- NOTES**
- INDICATES STREET LINE HERETOFORE ESTABLISHED AND HEREBY RETAINED.
 - INDICATES STREET LINE HEREBY ESTABLISHED.
 - INDICATES STREET LINE HERETOFORE ESTABLISHED AND HEREBY ELIMINATED.
 - 213.92' INDICATES DIMENSION HEREBY ESTABLISHED.
 - 9.4 INDICATES ELEVATION HEREBY ESTABLISHED.
 - 110' INDICATES TIE-IN DISTANCES TO ELEVATIONS HEREBY ESTABLISHED.
 - INDICATES SIDEWALK AND ROADWAY TREATMENT HEREBY ESTABLISHED OR HERETOFORE ESTABLISHED AND RETAINED.
 - 12' INDICATES SIDEWALK AND ROADWAY TREATMENT DIMENSION HEREBY ESTABLISHED.
 - INDICATES SIDEWALK EASEMENT HEREBY ESTABLISHED
 - ELEVATIONS ARE FOR TOP OF CURB AND ARE REFERRED TO THE DATUM OF THE TOPOGRAPHICAL BUREAU, BOROUGH OF MANHATTAN WHICH IS 2.75 FEET ABOVE THE U.S.C. & G. DATUM AT SANDY HOOK.
 - INDICATES LOT LINE
 - INDICATES SEWER, SIDEWALK AND ROADWAY EASEMENT
 - LINE "N" SEE SHEET 2 FOR LOCATION AND DIMENSIONS.

CITY OF NEW YORK
 OFFICE OF THE PRESIDENT BOROUGH OF MANHATTAN
 TOPOGRAPHICAL BUREAU

**MAP SHOWING A CHANGE IN THE CITY MAP
 BY ELIMINATING AND CHANGING STREET LINES,
 AND
 BY LAYING OUT THE LINES AND DIMENSIONS OF
 SEWER, SIDEWALK AND ROADWAY EASEMENTS
 IN THE AREA GENERALLY BOUNDED BY
 PEARL STREET, BROAD STREET,
 SOUTH WILLIAM STREET**

AND THE WESTERLY PROPERTY LINE OF LOTS 49 & 22 IN BLOCK 29

DATED DEC. 12, 1979 SCALE 1" = 30'
 REVISED: MARCH 5, 1980
 AMENDED: OCTOBER 20, 1980

Andrew Stein
 ANDREW STEIN, PRESIDENT BOROUGH OF MANHATTAN
Anthony C. Golotta
 ANTHONY C. GULOTTA, P.E., DIRECTOR TOPOGRAPHICAL BUREAU

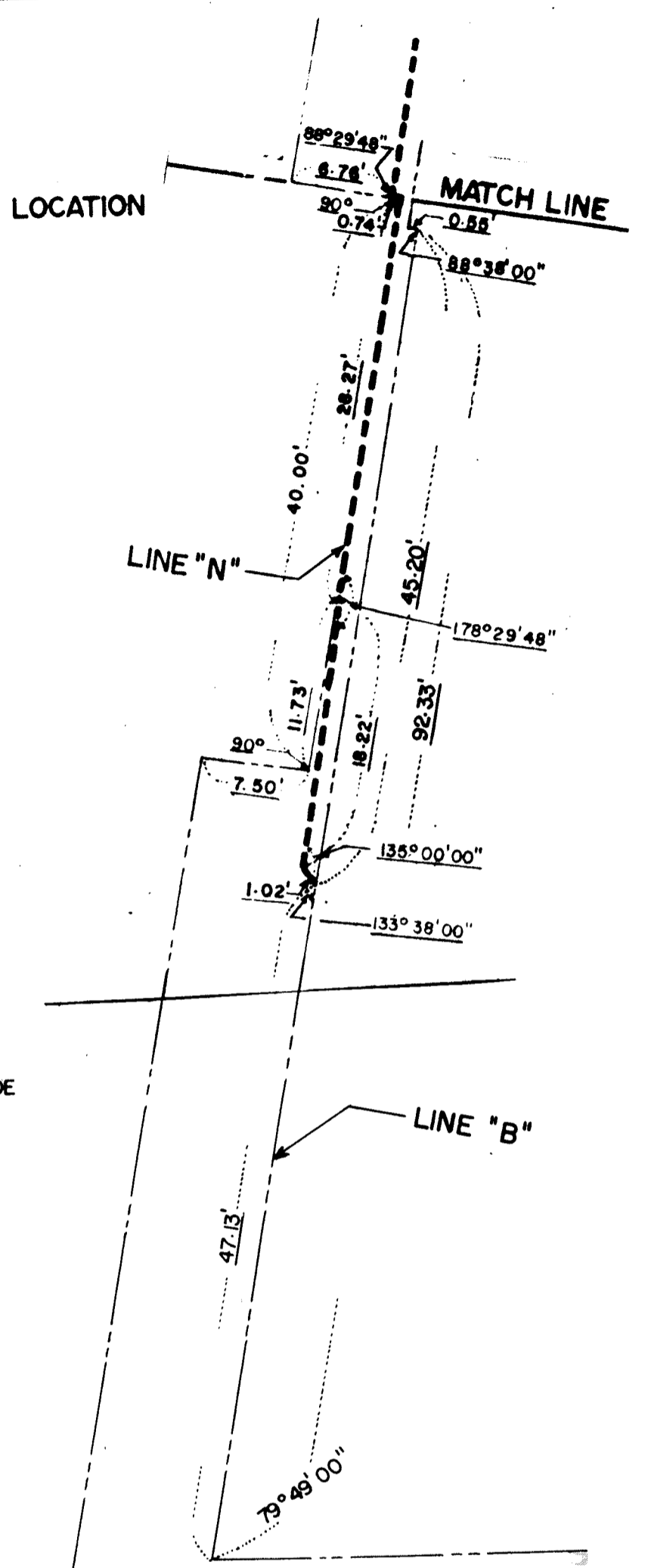
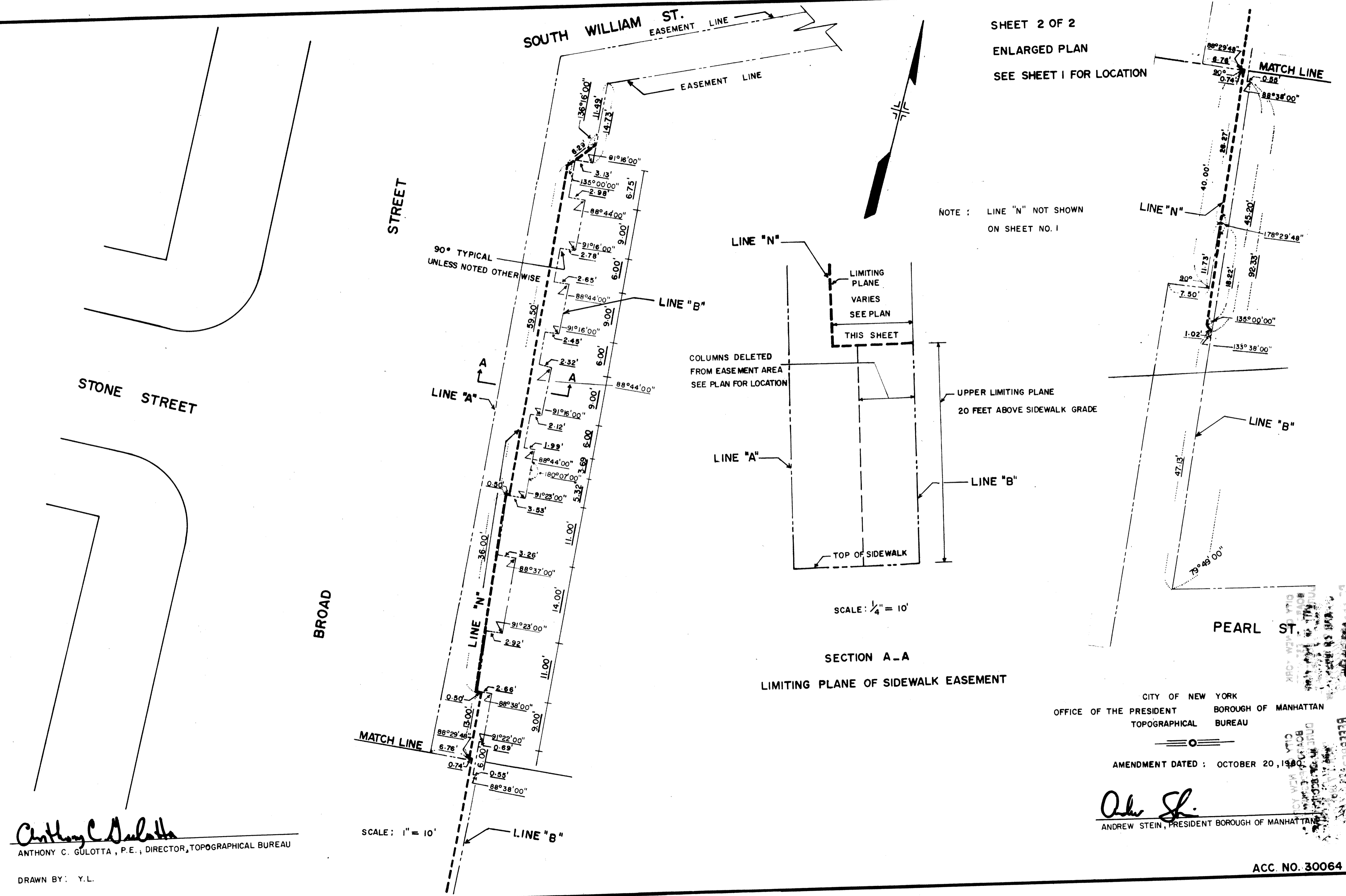
I, THEODORE MEEKINS, SECRETARY OF THE
 BOARD OF ESTIMATE OF THE CITY OF NEW YORK
 DO HEREBY CERTIFY THAT THIS MAP IS ONE OF
 SEVEN SIMILAR MAPS ADOPTED BY THE SAID BOARD
 OF ESTIMATE ON FEB. 26 1981 CAL. 291

DATED: NEW YORK MAY 5, 1981
Theodore Meekins
 SECRETARY, BOARD OF ESTIMATE

DRAWN BY: Y.L.
 CHECKED BY: G.S.
G. S. Salas
 DEPUTY TOPOGRAPHICAL ENGINEER

SHEET 2 OF 2
ENLARGED PLAN
SEE SHEET 1 FOR LOCATION

NOTE : LINE "N" NOT SHOWN
ON SHEET NO. 1



Anthony C. Gulotta
ANTHONY C. GULOTTA, P.E., DIRECTOR, TOPOGRAPHICAL BUREAU

DRAWN BY: Y.L.

SCALE: 1" = 10'

SCALE: 1/4" = 10'

SECTION A-A
LIMITING PLANE OF SIDEWALK EASEMENT

CITY OF NEW YORK
OFFICE OF THE PRESIDENT, BOROUGH OF MANHATTAN
TOPOGRAPHICAL BUREAU

AMENDMENT DATED: OCTOBER 20, 1980

Andrew Stein
ANDREW STEIN, PRESIDENT BOROUGH OF MANHATTAN

ACC. NO. 30064

December 20