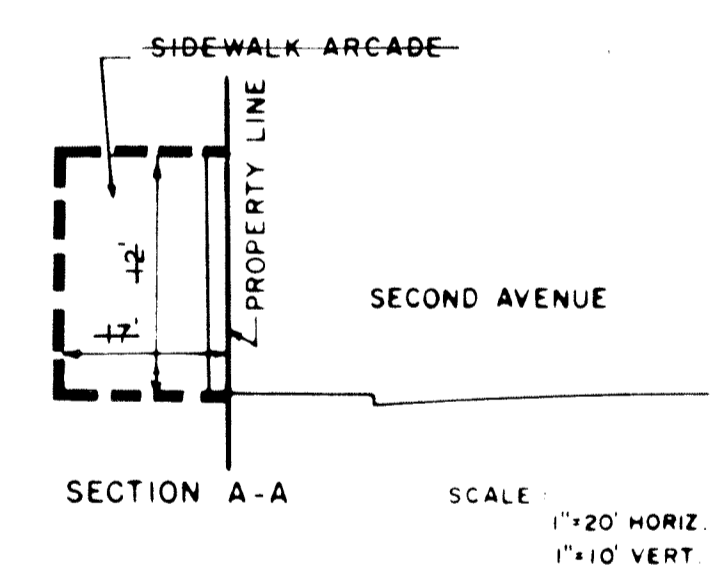


SEE MAP NO. 30047  
DATED OCTOBER 25, 1979  
FOR PROPOSED  
MAP CHANGE



- NOTES**
- INDICATES STREET LINE HERETOFORE ESTABLISHED AND HEREBY RETAINED.
  - INDICATES STREET LINE HEREBY ESTABLISHED.
  - INDICATES STREET LINE HERETOFORE ESTABLISHED AND HEREBY ELIMINATED.
  - 610.00' INDICATES DIMENSION HERETOFORE ESTABLISHED AND HEREBY RETAINED.
  - 610.00' INDICATES DIMENSION HEREBY ESTABLISHED.
  - 535.00' INDICATES DIMENSION HERETOFORE ESTABLISHED AND HEREBY ELIMINATED.
  - INDICATES ELEVATION HERETOFORE ESTABLISHED AND HEREBY RETAINED.
  - INDICATES ACCESS EASEMENT HEREBY ESTABLISHED.
  - INDICATES ELEVATION HERETOFORE ESTABLISHED AND HEREBY ELIMINATED.
  - INDICATES TIE-IN DISTANCES TO ELEVATIONS HEREBY ESTABLISHED.
  - INDICATES SIDEWALK AND ROADWAY TREATMENT HEREBY ESTABLISHED OR HERETOFORE ESTABLISHED AND RETAINED.
  - 15' INDICATES SIDEWALK AND ROADWAY TREATMENT DIMENSION HERETOFORE ESTABLISHED AND RETAINED.
  - 15' INDICATES SIDEWALK AND ROADWAY TREATMENT DIMENSION HEREBY ESTABLISHED.
  - ELEVATIONS ARE FOR TOP OF CURB AND ARE REFERRED TO THE DATUM OF THE TOPOGRAPHICAL BUREAU, BOROUGH OF MANHATTAN WHICH IS 2.75 FEET ABOVE THE U. S. C. & G. DATUM AT SANDY HOOK.
  - [Hatched Box] INDICATES PARK HEREBY ESTABLISHED

CITY OF NEW YORK  
OFFICE OF THE PRESIDENT BOROUGH OF MANHATTAN  
TOPOGRAPHICAL BUREAU

MAP SHOWING A CHANGE IN THE CITY MAP  
BY  
ELIMINATING, DISCONTINUING AND CLOSING  
A PORTION OF  
**SECOND AVENUE**  
ON ITS WESTERLY SIDE  
BETWEEN EAST 59TH STREET AND EAST 60TH STREET  
BY  
ELIMINATING THE LINES OF A SIDEWALK ARCADE  
FRONTING ON THE WESTERLY SIDE OF SECOND AVENUE  
BETWEEN EAST 57TH STREET AND EAST 58TH STREET,  
AND  
BY LAYING OUT A PARK  
FRONTING ON THE WESTERLY SIDE OF SECOND AVENUE  
BETWEEN EAST 59TH STREET AND EAST 60TH STREET

DRAWN BY: KLT  
CHECKED BY: *B.S.*  
*George Saitan*  
DEPUTY TOPOGRAPHICAL ENGINEER



I, THEODORE MEEKINS, SECRETARY OF THE BOARD OF ESTIMATE OF THE CITY OF NEW YORK DO HEREBY CERTIFY THAT THIS MAP IS ONE OF EIGHT SIMILAR MAPS ADOPTED BY THE SAID BOARD OF ESTIMATE ON THE *July 1, 1980* CAL. 7  
DATED: NEW YORK *January 27, 1981*  
*Theodore Meekins*  
SECRETARY, BOARD OF ESTIMATE 74

APPROVED FOR DEPARTMENT OF PARKS  
*[Signature]*  
COMMISSIONER OF PARKS

DECEMBER 12, 1979  
REV. MARCH 7, 1980  
*[Signature]*  
PRESIDENT, BOROUGH OF MANHATTAN  
*[Signature]* P.E.  
DIRECTOR, TOPOGRAPHICAL BUREAU



SCALE: 1"=80'

ACC. NO. 30060

*Chapter 20*