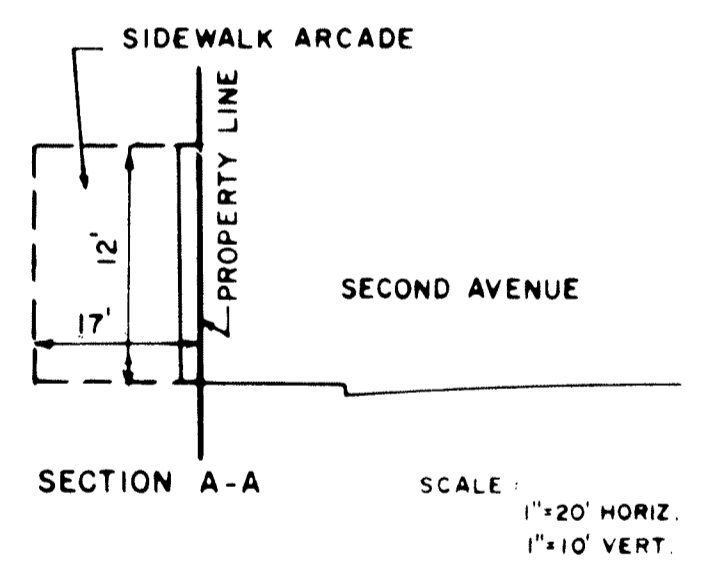
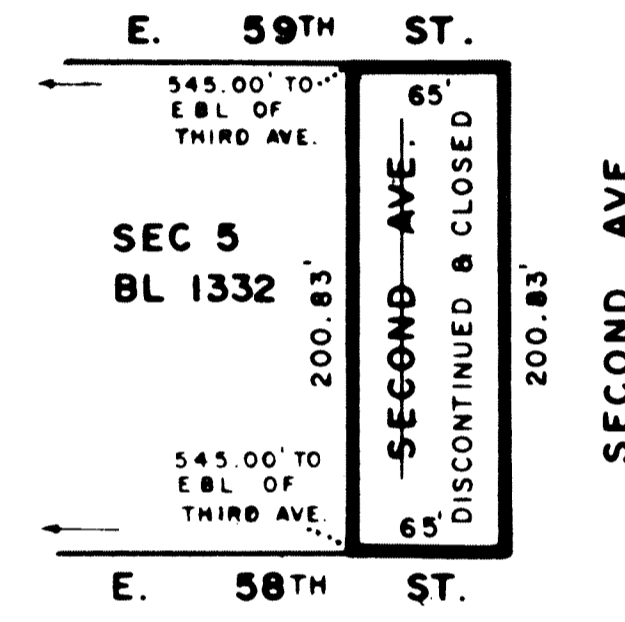


QUEENSBORO
BRIDGE
PLAZA



NOTES

- INDICATES STREET LINE HERETOFORE ESTABLISHED AND HEREBY RETAINED.
- INDICATES STREET LINE HEREBY ESTABLISHED.
- - - INDICATES STREET LINE HERETOFORE ESTABLISHED AND HEREBY ELIMINATED.
- 610.00' INDICATES DIMENSION HERETOFORE ESTABLISHED AND, HEREBY RETAINED.
- 610.00' INDICATES DIMENSION HEREBY ESTABLISHED.
- ~~535.00'~~ INDICATES DIMENSION HERETOFORE ESTABLISHED AND HEREBY ELIMINATED.
- INDICATES ELEVATION HERETOFORE ESTABLISHED AND HEREBY RETAINED.
- INDICATES ELEVATION HEREBY ESTABLISHED.
- INDICATES ELEVATION HERETOFORE ESTABLISHED AND HEREBY ELIMINATED.
- INDICATES TIE-IN DISTANCES TO ELEVATIONS HEREBY ESTABLISHED.
- INDICATES SIDEWALK AND ROADWAY TREATMENT HEREBY ESTABLISHED OR HERETOFORE ESTABLISHED AND RETAINED.
- 15' INDICATES SIDEWALK AND ROADWAY TREATMENT DIMENSION HERETOFORE ESTABLISHED AND RETAINED.
- 15' INDICATES SIDEWALK AND ROADWAY TREATMENT DIMENSION HEREBY ESTABLISHED.
- ELEVATIONS ARE FOR TOP OF CURB AND ARE REFERRED TO THE DATUM OF THE TOPOGRAPHICAL BUREAU, BOROUGH OF MANHATTAN WHICH IS 2.75 FEET ABOVE THE U. S. C. & G. DATUM AT SANDY HOOK.

CITY OF NEW YORK
OFFICE OF THE PRESIDENT BOROUGH OF MANHATTAN
TOPOGRAPHICAL BUREAU

MAP SHOWING A CHANGE IN THE CITY MAP
BY
ELIMINATING,
DISCONTINUING AND CLOSING
A PORTION OF
SECOND AVENUE
ON ITS WESTERLY SIDE
BETWEEN
EAST 58TH STREET AND EAST 59TH STREET
BOROUGH OF MANHATTAN

DRAWN BY: KLT
CHECKED BY: *A.S.*
George Seilan
DEPUTY TOPOGRAPHICAL ENGINEER

I, THEODORE MEEKINS, SECRETARY OF THE BOARD OF ESTIMATE OF THE CITY OF NEW YORK DO HEREBY CERTIFY THAT THIS MAP IS ONE OF SEVEN SIMILAR MAPS ADOPTED BY THE SAID BOARD OF ESTIMATE ON THE July 17, 1982 CAL. B
DATED: NEW YORK, January 27, 1981
Theodore Meekins
SECRETARY, BOARD OF ESTIMATE

g. Faybik
2/6/81

DATED: OCTOBER 25, 1979

Andrew Stein
PRESIDENT, BOROUGH OF MANHATTAN
Anthony Calabrese
DIRECTOR, TOPOGRAPHICAL BUREAU

SCALE: 1"=80'

ACC. NO. 30047

Drawer 20