

DAMAGE PARCEL NUMBER	TAX LOT NUMBER	AREA IN SQUARE FEET TAKEN	AREA IN SQUARE FEET REMAINING	LAST OWNER OF RECORD	REMARKS	ASSESSED VALUATION					
						1968-1969		1969-1970		1970-1971	
						LAND	LAND AND IMPROVEMENT	LAND	LAND AND IMPROVEMENT	LAND	LAND AND IMPROVEMENT
BLOCK 427											
1	1	6512	0	CHARLES & RACHEL MINTZ, ET AL	SEE NOTE A	75 000	80 000	75 000	80 000	75 000	80 000
2	4	11 011	0	TWO FIFTY ONE REALTY CORP.		77 000	85 000	77 000	85 000	77 000	85 000
3	7	2 474	0	ISRAEL KABRAM, ET AL.	SEE NOTE B	20 000	30 000	20 000	30 000	20 000	30 000
4	8	2 472	0	FRIEDA WEISSMAN, ET AL.	SEE NOTE C	19 500	30 000	19 500	30 000	19 500	30 000
5	9	2 471	0	CONSTANCE DEVELOPMENT CORP.		19 500	26 000	19 500	26 000	19 500	26 000
6	10	2 457	0	MORRIS LINDENBAUM REALTY, INC.		19 500	28 500	19 500	28 500	19 500	30 000
7	11	2 471	0	JAMMY'S BOWERY FOLLIES, INC.		19 500	37 000	19 500	37 000	19 500	37 000
8	12	2 469	0	267 BOWERY REALTY CORP.		19 500	37 000	19 500	37 000	19 500	37 000
9	13	2 462	0	269 BOWERY CORP.		19 500	30 000	19 500	30 000	19 500	30 000
10	14	1 724	0	GOLDMARK REALTY CORP.		19 500	30 000	19 500	30 000	19 500	30 000
11	15	1 661	0	BERTHA BERING, ET AL.	SEE NOTE D	18 500	27 000	18 500	27 000	18 500	27 000
12	16	1 596	0	STANLEY J. LANDSMAN		18 500	29 000	18 500	29 000	18 500	29 000
13	18	3 148	0	277 BOWERY, INC.		69 000	82 000	69 000	82 000	69 000	85 000
14	27	82 950	0	CITY OF NEW YORK		630 000	630 000	630 000	630 000	630 000	630 000
15	47	2 524	0	ALEXANDER BOSSOM		12 000	19 000	12 000	19 000	12 000	19 000
16	48	2 501	0	ALEXANDER BOSSOM		12 000	19 000	12 000	19 000	12 000	19 000
17	49	2 502	0	ALEXANDER BOSSOM		12 000	12 000	12 000	12 000	12 000	12 000
18	50	2 457	0	12 STANTON ST. REALTY CORP.		12 000	26 000	12 000	26 000	12 000	26 000
150		0		SEE NOTE "E"		100	100	100	100	100	100
19	51	2 501	0	10 STANTON ST. CORP.		12 000	32 000	12 000	32 000	12 000	32 000
RECAPITULATION						1 104 600	1 289 600	1 104 600	1 292 600	1 104 600	1 294 100
BLOCK 456											
20	1	1 162	0	CITY OF NEW YORK		30 000	30 000	30 000	30 000	30 000	30 000
21	5	1 160	0	DEEREALTY CORP.		2 000	12 000	2 000	12 000	2 000	12 000
22	6	1 174	0	289 BOWERY, INC.		2 000	12 000	2 000	12 000	2 000	12 000
23	7	20 735	0	NEW YORK CITY CHURCH	SEE NOTE F	175 000	275 000	175 000	275 000	175 000	275 000
24	9	2 232	0	MINI-PROPERTIES, INC.		17 000	48 000	17 000	48 000	17 000	48 000
25	10	2 329	0	MINI-PROPERTIES, INC.		22 000	33 000	22 000	33 000	22 000	33 000
26	12	1 174	0	301 BOWERY REALTY CORP.		12 000	17 000	12 000	17 000	12 000	16 000
27	13	957	0	SU BAR PROPERTIES, INC.		16 000	21 000	16 000	21 000	16 000	21 000
28	14	256	0	CITY OF NEW YORK		2 000	2 300	2 000	2 300	2 000	2 300
29	15	1 977	0	JOHN LEACH, ET AL.	SEE NOTE G	10 000	20 000	10 000	20 000	10 000	20 000
30	17	1 696	0	ROBERT BLUM		8 000	14 000	8 000	14 000	8 000	14 000
31	18	1 909	0	CITY OF NEW YORK		8 000	15 000	8 000	15 000	8 000	13 000
32	19	1 930	0	WAMAHA REALTY CORP.		8 500	13 000	8 500	13 000	8 500	11 000
33	20	1 492	0	SIGMUND GOLDNER		7 000	13 000	7 000	13 000	7 000	11 000
34	21	1 460	0	CITY OF NEW YORK		6 500	6 500	6 500	6 500	6 500	6 500
35	22	1 828	0	CITY OF NEW YORK		8 500	8 500	8 500	8 500	8 500	8 500
36		600	0	ALLEY - CITY OF NEW YORK							
37	27	4 368	0	11 SECOND AVENUE CORP.		60 000	85 000	60 000	85 000	60 000	80 000
38	34	7 813	0	CITY OF NEW YORK		95 000	95 000	95 000	95 000	95 000	95 000
RECAPITULATION						500 500	720 300	509 500	705 300	500 500	696 300
BLOCK 457											
39	1	1 743	0	307 BOWERY CORP.		28 500	31 000	28 500	31 000	28 500	31 000
40	3	1 477	0	SAMPLE HOLDING CORP.		15 000	23 000	15 000	23 000	15 000	23 000
41	4	4 030	0	JULIUS MINTZ		30 000	41 000	30 000	41 000	30 000	41 000
42	28	22 069	0	DARL PARKING CORP.		185 000	185 000	185 000	185 000	185 000	185 000
43	36	2 502	0	PAUL KORNBLUM & WILLIAM BRUDER		52 000	75 000	52 000	75 000	52 000	75 000
44	44	1 508	0	WAMAHA REALTY CORP.		10 000	22 000	10 000	22 000	10 000	22 000
45	52	3 971	0	EXTRA PLACE REALTY CO., INC.		33 000	100 000	33 000	100 000	33 000	100 000
46	55	1 437	0	RALPH GLOTZER & HAROLD GLOTZER		7 000	7 000	7 000	7 000	7 000	7 000
47	56	773	0	JOSEPH DELUCA		5 000	11 000	5 000	11 000	5 000	11 000
RECAPITULATION						365 500	495 000	365 500	495 000	365 500	495 000
STREETS											
48		21 928		BED OF EAST 1ST STREET BETWEEN THE BOWERY AND SECOND AVENUE							
49		3 768		BED OF EXTRA PLACE							
TOTAL RECAPITULATION						1 979 600	2 504 900	1 979 600	2 492 900	1 979 600	2 487 400

NOTE "A" CHARLES AND RACHEL MINTZ, JULIUS AND ETHEL MINTZ, SEYMOUR AND MOLLY TALBERT.
 NOTE "B" ISRAEL KABRAM, SOLOMON KABRAM, HARRY L. KABRAM & D.B.A. MARBAK TRADING CO.
 NOTE "C" FRIEDA WEISSMAN, LILLIAN TANNENBAUM, FAY SANDLER & LEONARD KANTOR.
 NOTE "D" BERTHA BERING, ROBERT AND SHEILA D. WERNICK.
 NOTE "E" A SURVEY OF THE WALLS OF THE BUILDINGS OCCUPYING TAX LOTS 1, 50 AND 51 AND A STUDY OF THE LAST DEEDS OF RECORD SHOW THAT THERE IS NO EIGHT INCH STRIP (TAX LOT 150) BETWEEN TAX LOTS 50 AND 51.
 NOTE "F" NEW YORK CITY CHURCH EXTENSION AND MISSIONARY SOCIETY OF THE METHODIST EPISCOPAL CHURCH.
 NOTE "G" JOHN LEACH, MAX LEACH, OSCAR LEACH & RUTH OSTER.

LEGEND
 (1) DAMAGE PARCEL NUMBER
 1 TAX LOT NUMBER
 I.W. INDEPENDENT WALL
 P.W. PARTY WALL
 BKW BRICK WALL
 R.W. RETAINING WALL

**DAMAGE MAP
 COOPER SQUARE
 COMMUNITY DEVELOPMENT AREA
 (URBAN RENEWAL)
 STAGE I**

WITHIN THE AREA BOUNDED GENERALLY BY BOWERY, EAST 2ND STREET, SECOND AVENUE, CHRYSTIE STREET AND STANTON STREET.

**BOROUGH OF MANHATTAN
 CITY OF NEW YORK**

DATED: DECEMBER 20, 1970

SCALE: 1"=20'

SUBJECT TO ALL PUBLIC AND PRIVATE EASEMENTS IN, OVER AND UPON THE PUBLIC STREETS AND PUBLIC AND PRIVATE PROPERTIES AND THE PORTIONS THEREOF INCLUDED WITHIN THE PREMISES TO BE ACQUIRED INCLUDING TITLE TO STREET AREAS WHERE THE TITLE IN FEE FOR SUCH PURPOSES HAS NOT BEEN HERETOFORE ACQUIRED BY THE CITY OF NEW YORK.

SUBJECT TO ENCROACHMENTS, IF ANY, OF THE STRUCTURES, IMPROVEMENTS AND APPURTENANCES STANDING OR MAINTAINED PARTLY UPON THE LANDS AND PREMISES ADJOINING THE SAME SO LONG AS SUCH ENCROACHMENTS SHALL STAND.

SURVEYED BY

EARL B. LOVELL - S. P. BELCHER, INC.

H. Schnell

LICENSED LAND SURVEYOR
 CITY SURVEYOR
 53 PARK PLACE

VICE PRESIDENT
 NEW YORK, N.Y. 10007

SHEET 1 OF 3

ACC 30044

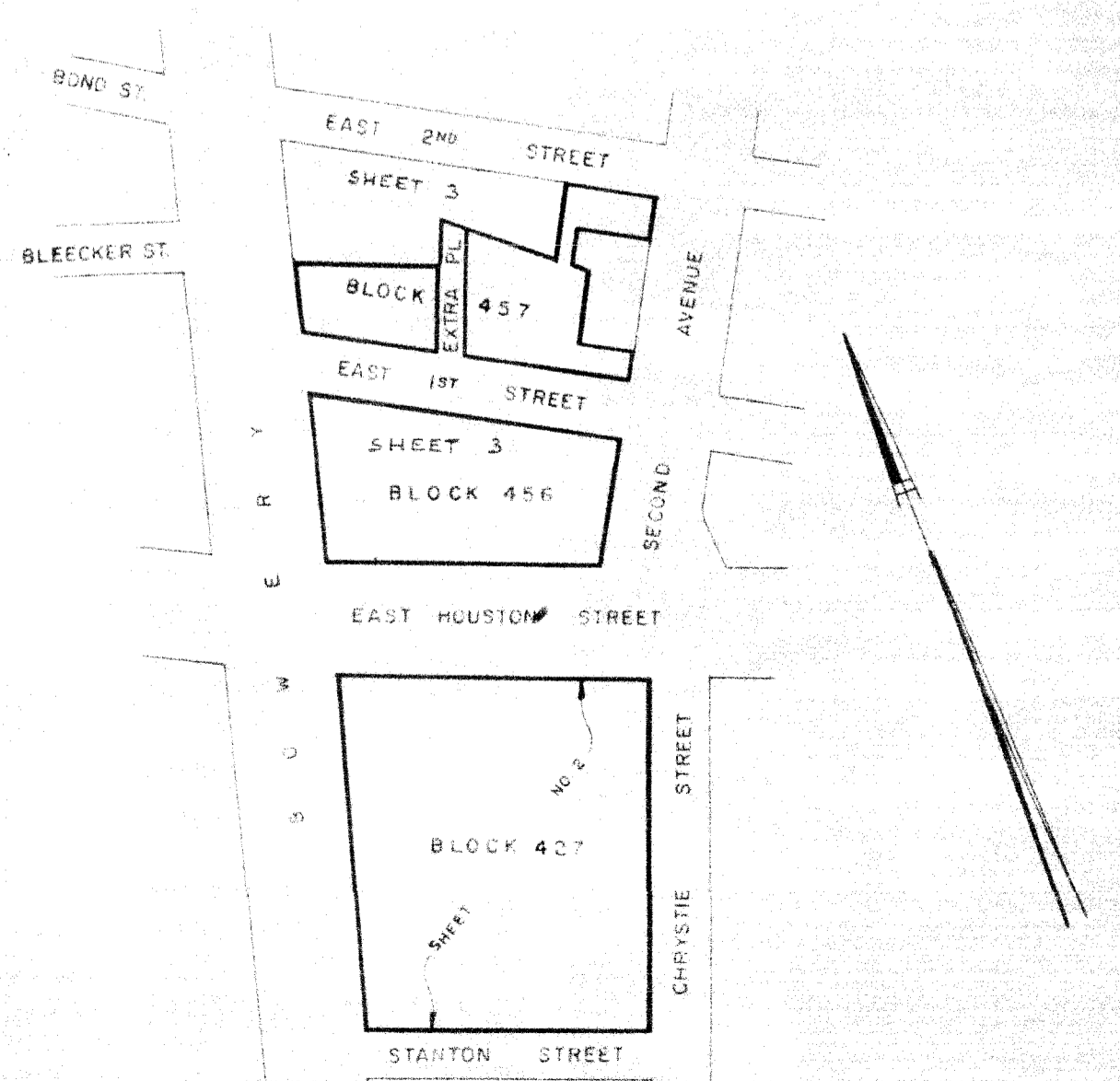
CERTIFICATION

I, ROBERT G. HAZEN, COMMISSIONER OF DEVELOPMENT OF THE HOUSING AND DEVELOPMENT ADMINISTRATION, DO HEREBY CERTIFY THAT THIS IS ONE OF THREE SIMILAR MAPS CAUSED BY ME TO BE MADE IN PURSUANCE OF THE PROVISIONS OF SECTION B15-50 OF ADMINISTRATIVE CODE OF THE CITY OF NEW YORK OF CERTAIN LANDS AND PREMISES LOCATED IN BLOCKS 427, 456, AND 457, AND THE BED OF EXTRA PLACE AND A PORTION OF EAST 1ST STREET BOUNDED BY THE EAST LINE OF BOWERY, THE WEST LINE OF SECOND AVENUE, THE NORTH LINE OF EAST 1ST STREET, AND THE SOUTH LINE OF EAST 1ST STREET IN THE BOROUGH OF MANHATTAN, CITY OF NEW YORK, DULY SELECTED AND APPROVED AS SITES FOR THE COOPER SQUARE COMMUNITY DEVELOPMENT AREA, PURSUANT TO ARTICLE 15 OF THE GENERAL MUNICIPAL LAW.

DATED: NEW YORK JANUARY 6, 1971

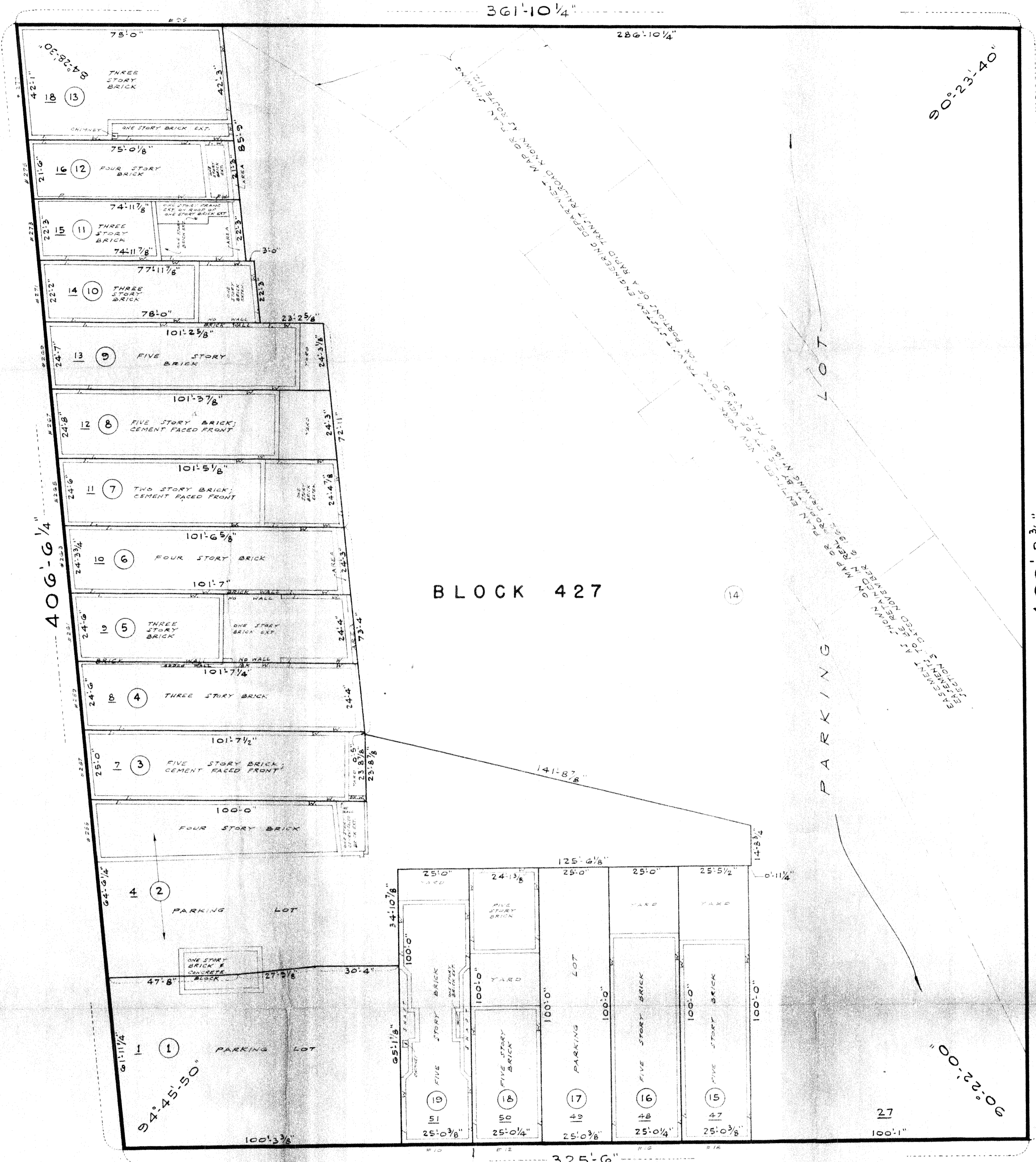
Robert G. Hazen
 COMMISSIONER OF DEVELOPMENT
 HOUSING AND DEVELOPMENT ADMINISTRATION

**INDEX MAP
 SCALE 1"=200'**



EAST HOUSTON STREET

Y
R
E
W
B
O
R
O
U
G
H



BLOCK 427

STANTON STREET

STREET

STREET

CHRYSTIE STREET

DAMAGE MAP
 COOPER SQUARE
 COMMUNITY DEVELOPMENT AREA
 (URBAN RENEWAL)
 STAGE I
 BOROUGH OF MANHATTAN
 CITY OF NEW YORK

SCALE: 1" = 20'

SHEET 2 OF 3

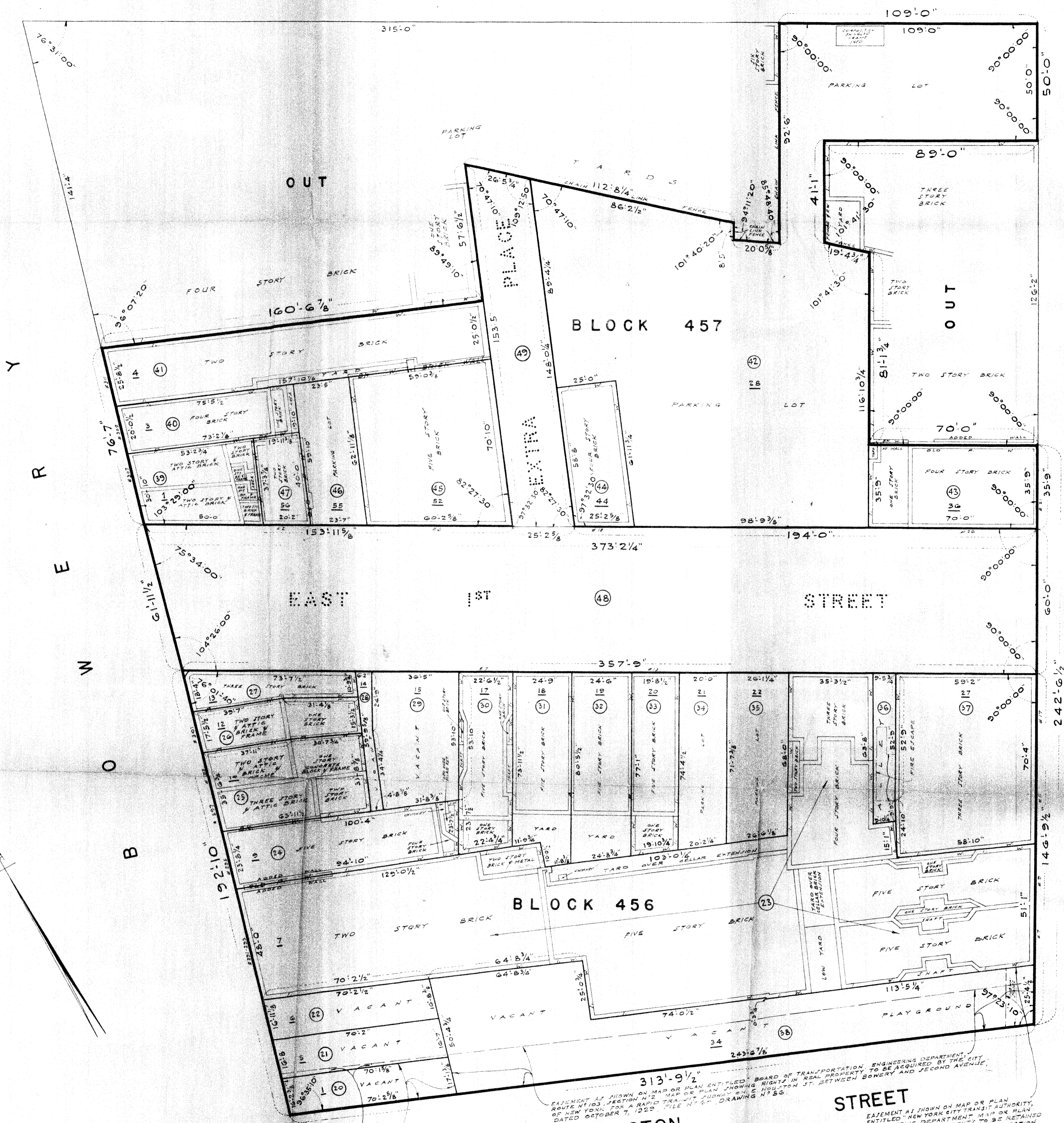
ACC 30044

Drawer 40/41

EAST

2ND

STREET



AVENUE

SECOND

DAMAGE MAP
COOPER SQUARE
COMMUNITY DEVELOPMENT AREA
 (URBAN RENEWAL)
STAGE I
 BOROUGH OF MANHATTAN
 CITY OF NEW YORK

EASEMENT AS SHOWN ON MAP OR PLAN ENTITLED "BOARD OF TRANSPORTATION ENGINEERING DEPARTMENT, ENGINEERING BUREAU, SECTION N12, MAP OR PLAN SHOWING RIGHTS OF NEW YORK FOR A RAPID TRANSIT SUBWAY ALONG HOLLIS ST. BETWEEN BOWERY AND SECOND AVENUE," DATED OCTOBER 7, 1923, FILE N120, DRAWING N120.

EASEMENT AS SHOWN ON MAP OR PLAN ENTITLED "BOARD OF TRANSPORTATION ENGINEERING BUREAU, SECTION N13, MAP OR PLAN SHOWING RIGHTS OF NEW YORK FOR A RAPID TRANSIT SUBWAY ALONG HOLLIS ST. BETWEEN BOWERY AND SECOND AVENUE," DATED FEBRUARY 6, 1933, FILE N130, DRAWING N130.

EASEMENT AS SHOWN ON MAP OR PLAN ENTITLED "NEW YORK CITY TRANSIT AUTHORITY, ENGINEERING DEPARTMENT, MAP OR PLAN SHOWING EASEMENT RIGHTS TO BE RETAINED IN CITY PROPERTY FOR RECONSTRUCTION OF SUBWAY ENTRANCES ALONG HOLLIS STREET FROM BROADWAY TO FIRST AVENUE," DATED DECEMBER 18, 1957, FILE N150, DRAWING N150, SHEET 3 OF 4.

SCALE: 1"=20'

SHEET 3 OF 3

Drawer 40/41

ACC 30044