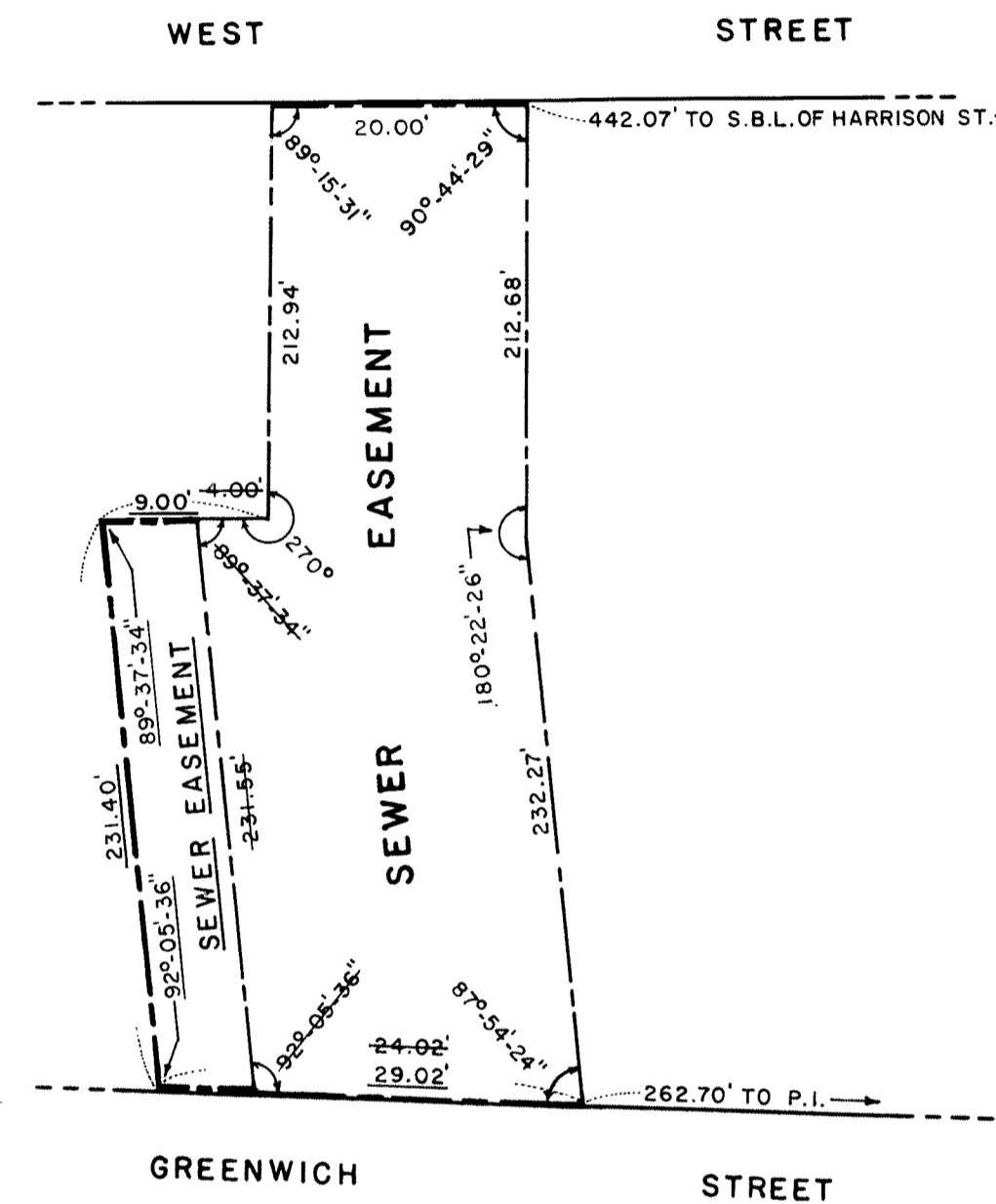
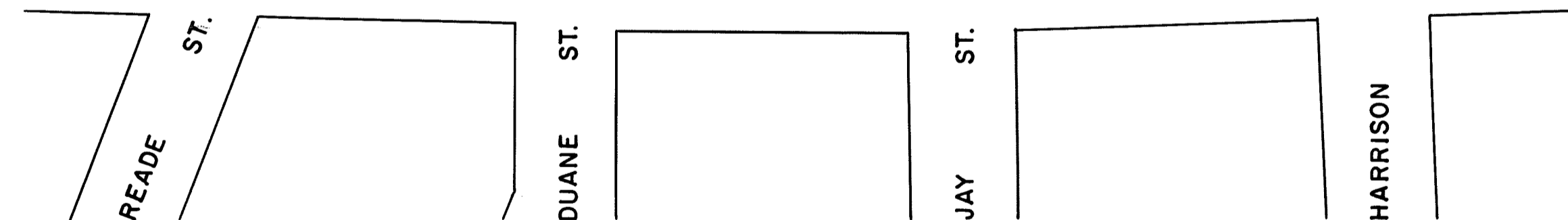
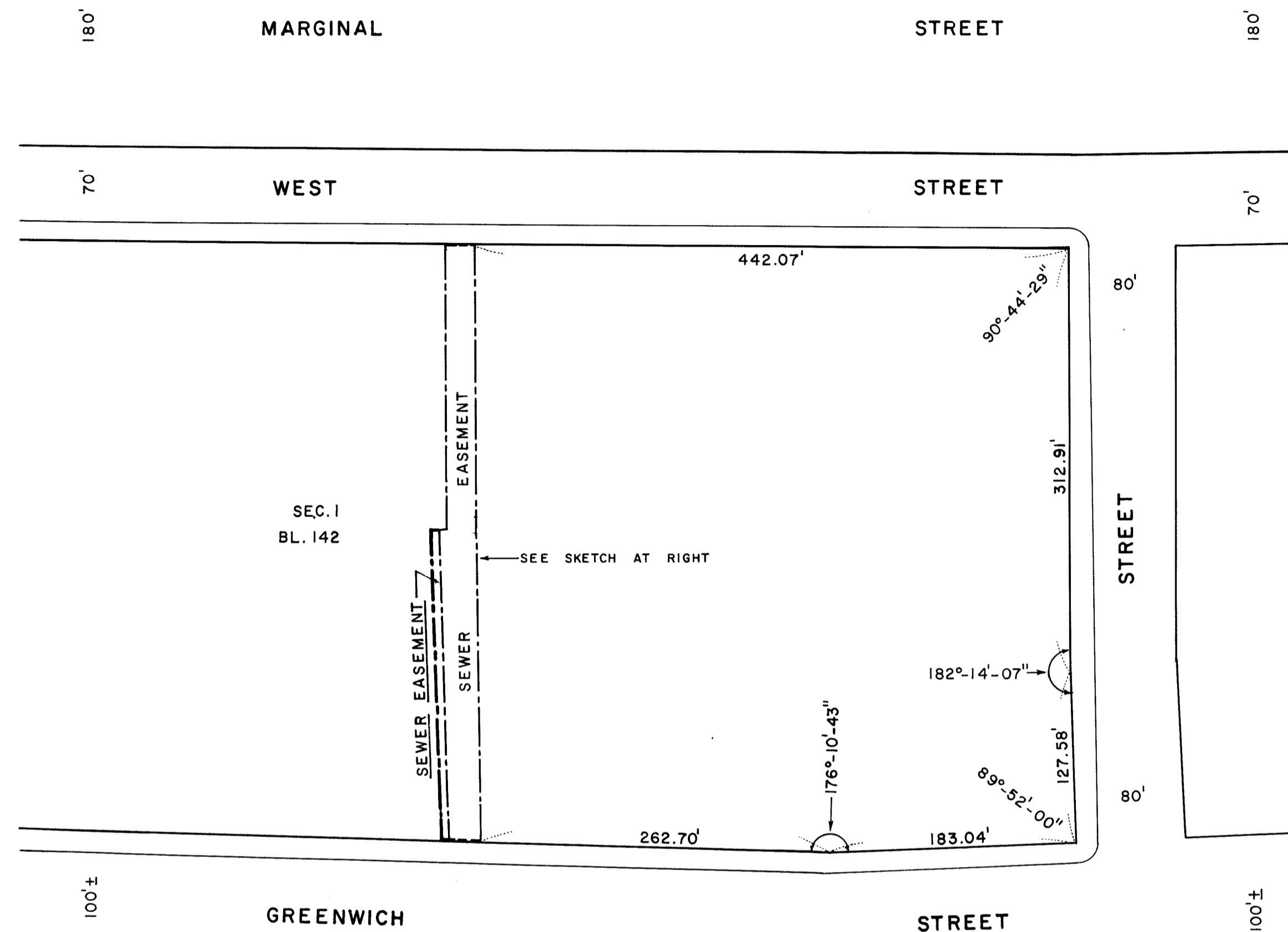
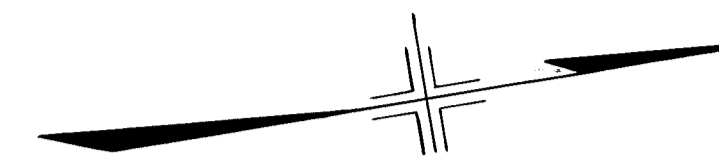


HUDSON RIVER  
U.S. BULKHEAD LINE



- NOTES**
- INDICATES STREET LINE HERETOFORE ESTABLISHED AND HEREBY RETAINED.
  - 20.00' INDICATES DIMENSION HERETOFORE ESTABLISHED AND HEREBY RETAINED.
  - 29.02' INDICATES DIMENSION HEREBY ESTABLISHED.
  - ~~24.02'~~ INDICATES DIMENSION HERETOFORE ESTABLISHED AND HEREBY ELIMINATED.
  - - - INDICATES SEWER EASEMENT HEREBY ESTABLISHED.
  - - - INDICATES EXISTING SEWER EASEMENT.

**EXAGGERATED SKETCH**  
(NOT TO SCALE)

CITY OF NEW YORK  
OFFICE OF THE PRESIDENT BOROUGH OF MANHATTAN  
TOPOGRAPHICAL BUREAU

MAP SHOWING A CHANGE IN THE CITY MAP  
BY CHANGING THE LINES OF A  
**SEWER EASEMENT**  
BETWEEN WEST STREET AND GREENWICH STREET  
IN CONNECTION WITH SITE FOR THE  
WASHINGTON MARKET URBAN RENEWAL AREA  
DATED: JAN. 11, 1974 SCALE: 1"=80'

DRAWN BY: KLT  
CHECKED BY: G.S.  
*George Soilan*  
DEPUTY TOPOGRAPHICAL ENGINEER



I, DAVID C. O'CONNOR, SECRETARY OF THE BOARD OF ESTIMATE OF THE CITY OF NEW YORK DO HEREBY CERTIFY THAT THIS MAP IS ONE OF SEVEN SIMILAR MAPS ADOPTED BY THE SAID BOARD OF ESTIMATE ON DECEMBER 19, 1974 CAL. 126  
DATED: NEW YORK MARCH 4, 1975  
*David C. O'Connor*  
SECRETARY, BOARD OF ESTIMATE

FILED IN THE OFFICE OF THE PRES. BORO. MAN.  
3/12/1975  
*J. Freylik*



*[Signature]*  
PRESIDENT, BOROUGH OF MANHATTAN  
*Felipa Sanchez* P.E.  
TOPOGRAPHICAL ENGINEER

ACC. NO. 30035