

I, DAVID C. O'CONNOR, SECRETARY OF THE BOARD OF ESTIMATE OF THE CITY OF NEW YORK DO HEREBY CERTIFY THAT THIS MAP IS ONE OF SEVEN SIMILAR MAPS ADOPTED BY THE SAID BOARD OF ESTIMATE ON JULY 16, 1974 CAL. 2

DATED: NEW YORK SEPTEMBER 16, 1974

David C. O'Connor
 SECRETARY, BOARD OF ESTIMATE
 H.F.

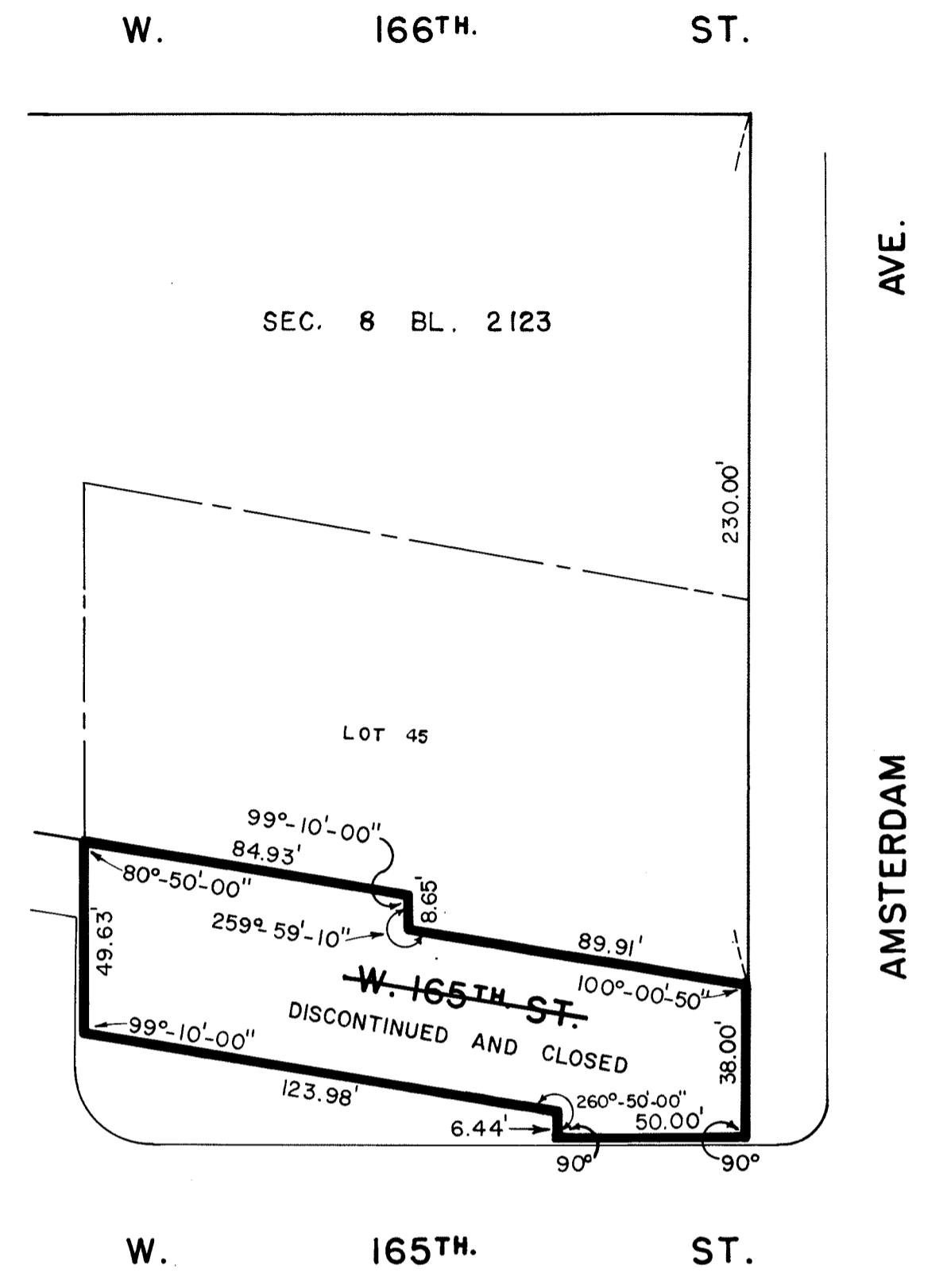
DRAWN BY: KLT

CHECKED BY: G.E.

George Soilan
 DEPUTY TOPOGRAPHICAL ENGINEER

- NOTES**
- INDICATES STREET LINE HERETOFORE ESTABLISHED AND HEREBY RETAINED.
 - INDICATES STREET LINE HEREBY ESTABLISHED.
 - INDICATES STREET LINE HERETOFORE ESTABLISHED AND HEREBY ELIMINATED.
 - 370.00' INDICATES DIMENSION HERETOFORE ESTABLISHED AND HEREBY RETAINED.
 - 200.17' INDICATES DIMENSION HEREBY ESTABLISHED.
 - 285.10' INDICATES DIMENSION HERETOFORE ESTABLISHED AND HEREBY ELIMINATED.
 - INDICATES SIDEWALK AND ROADWAY TREATMENT HEREBY ESTABLISHED OR HERETOFORE ESTABLISHED AND RETAINED.
 - (19) INDICATES EXISTING SIDEWALK AND ROADWAY TREATMENT DIMENSION.
 - 42' INDICATES SIDEWALK AND ROADWAY TREATMENT DIMENSION HEREBY ESTABLISHED.
 - DISCONTINUED AND CLOSED INDICATES STREET TO BE DISCONTINUED AND CLOSED.

FOR A PREVIOUS LAYOUT OF THIS AREA, SEE ACC. NOS. 8512, 20230 & 23055.



CITY OF NEW YORK
 OFFICE OF THE PRESIDENT BOROUGH OF MANHATTAN
 TOPOGRAPHICAL BUREAU

MAP SHOWING A CHANGE IN THE CITY MAP BY ELIMINATING, DISCONTINUING AND CLOSING A PORTION OF WEST 165TH STREET BETWEEN AMSTERDAM AVENUE AND A POINT 172± FEET WESTERLY THEREOF; BY ESTABLISHING THE LINES AND DIMENSIONS OF TWO SIDEWALK EASEMENTS WITHIN THE SAME LIMITS AND BY ESTABLISHING ROADWAY TREATMENT THEREFOR ALL IN CONNECTION WITH THE SITE FOR P.S. 215

DATED: NOV. 12, 1973
 AMENDED: JULY 3, 1974

SCALE: 1" = 40'

PRESIDENT, BOROUGH OF MANHATTAN

Felipe Sanchez P.E.
 TOPOGRAPHICAL ENGINEER

ACC. NO. 30033

FILED IN THE OFFICE OF THE DEPT. OF RECORDS & COMMUNICATIONS
 10/11/1974
John Foglietti