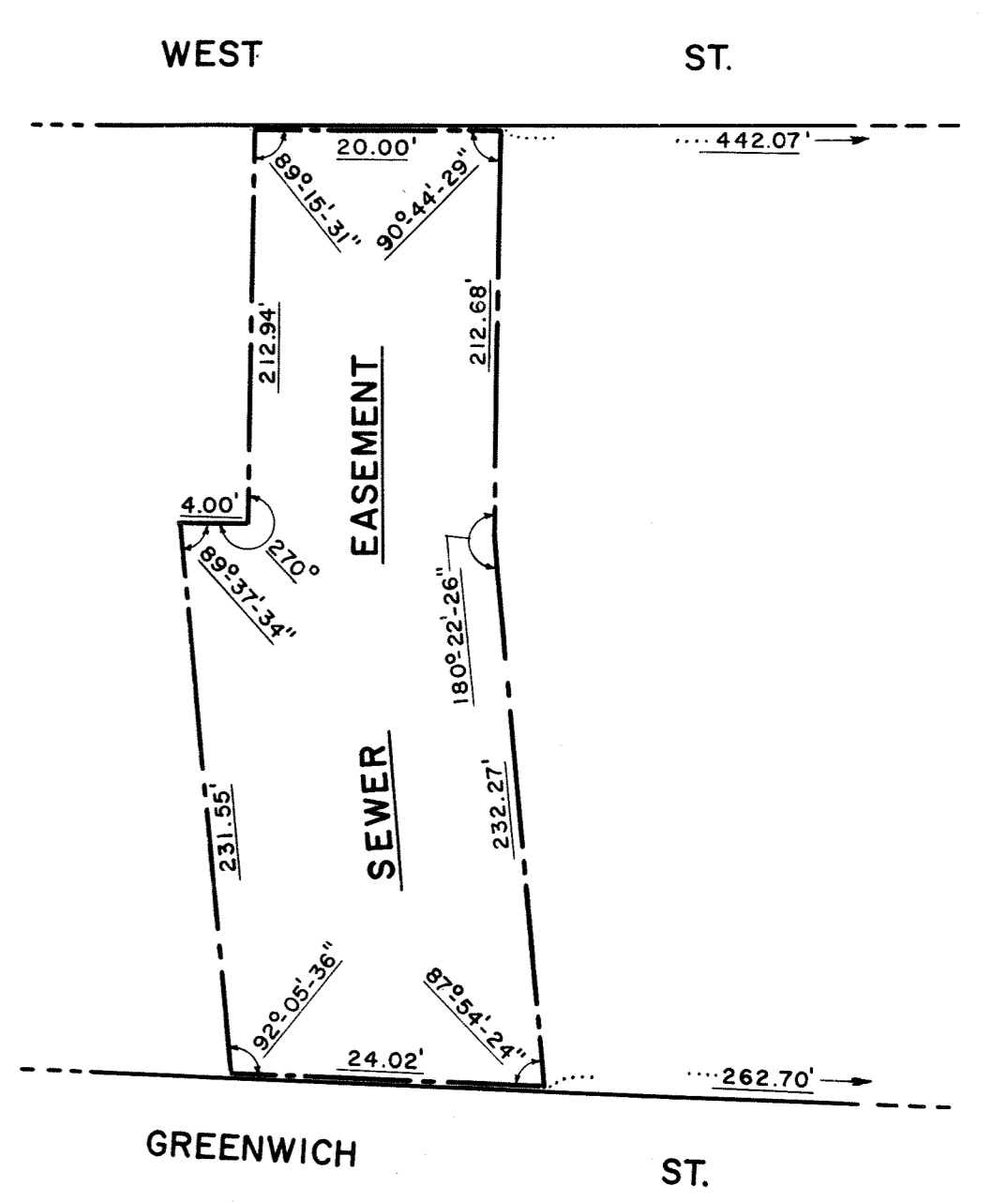
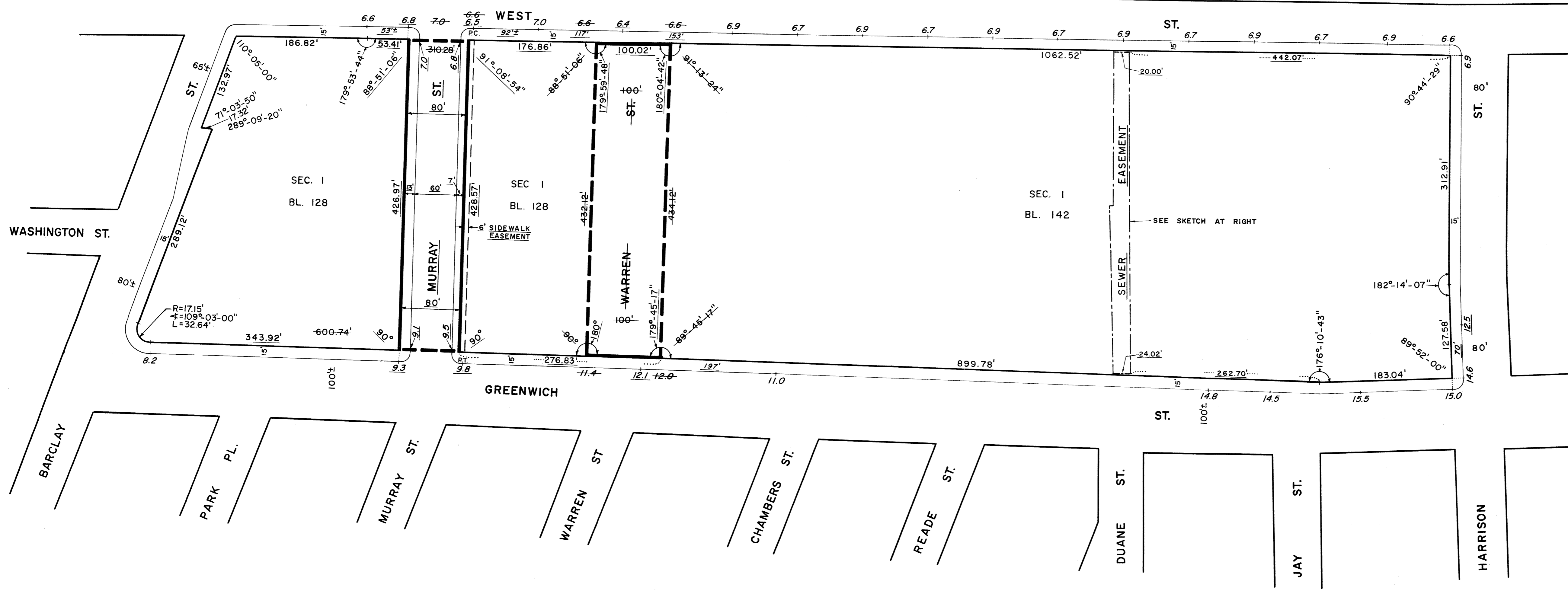
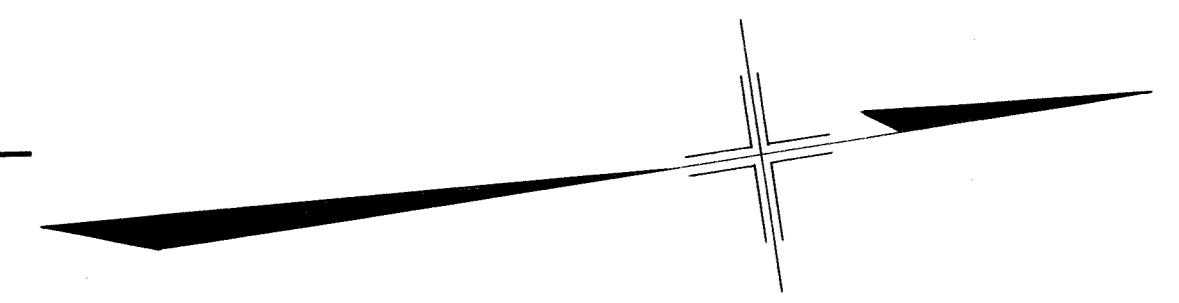


HUDSON RIVER

U. S. BULKHEAD LINE

MARGINAL ST.



EXAGGERATED SKETCH (NOT TO SCALE)

NOTES

- INDICATES STREET LINE HERETOFORE ESTABLISHED AND HEREBY RETAINED.
- INDICATES STREET LINE HEREBY ESTABLISHED.
- INDICATES STREET LINE HERETOFORE ESTABLISHED AND HEREBY ELIMINATED.
- 899.78' INDICATES DIMENSION HERETOFORE ESTABLISHED AND HEREBY RETAINED.
- 426.97' INDICATES DIMENSION HEREBY ESTABLISHED.
- 432.42' INDICATES DIMENSION HERETOFORE ESTABLISHED AND HEREBY ELIMINATED.
- 6.8 INDICATES ELEVATION HERETOFORE ESTABLISHED AND HEREBY RETAINED.
- 6.5 INDICATES ELEVATION HEREBY ESTABLISHED.
- 11.5 INDICATES ELEVATION HERETOFORE ESTABLISHED AND HEREBY ELIMINATED.
- 19.7' INDICATES TIE-IN DISTANCE TO ELEVATIONS HEREBY ESTABLISHED.
- INDICATES SIDEWALK AND ROADWAY TREATMENT HEREBY ESTABLISHED OR HERETOFORE ESTABLISHED AND RETAINED.
- 15' INDICATES SIDEWALK AND ROADWAY TREATMENT DIMENSION HERETOFORE ESTABLISHED AND RETAINED.
- 13' INDICATES SIDEWALK AND ROADWAY TREATMENT DIMENSION HEREBY ESTABLISHED.
- ELEVATIONS ARE FOR TOP OF CURB AND ARE REFERRED TO THE DATUM OF THE TOPOGRAPHICAL BUREAU, BOROUGH OF MANHATTAN WHICH IS 2.75 FEET ABOVE THE U.S.C. & G. SURVEY DATUM AT SANDY HOOK.
- INDICATES SEWER EASEMENT HEREBY ESTABLISHED.
- INDICATES SIDEWALK EASEMENT HEREBY ESTABLISHED.

DAVID C. O'CONNOR, ACTING SECRETARY OF THE BOARD OF ESTIMATE OF THE CITY OF NEW YORK DO HEREBY CERTIFY THAT THIS MAP IS ONE OF SEVEN SIMILAR MAPS ADOPTED BY THE SAID BOARD OF ESTIMATE ON DEC. 7<sup>TH</sup> 1972 CAL. 216

DATED: NEW YORK FEB 7 1973

David C. O'Connell ACTING SECRETARY, BOARD OF ESTIMATE

CITY OF NEW YORK OFFICE OF THE PRESIDENT BOROUGH OF MANHATTAN TOPOGRAPHICAL BUREAU

MAP SHOWING A CHANGE IN THE STREET SYSTEM BY ELIMINATING THE LINES OF WARREN STREET, BY LAYING OUT AN EXTENSION OF MURRAY STREET, BY ESTABLISHING THE LINES AND DIMENSIONS OF A PERMANENT SEWER EASEMENT IN THE BED OF FORMER DUANE STREET AND OF A SIDEWALK EASEMENT ON THE NORTH SIDE OF THE EXTENSION OF MURRAY STREET AND BY ESTABLISHING GRADES AND ROADWAY TREATMENT THEREFOR; ALL BETWEEN GREENWICH STREET AND WEST STREET.

DATED: SEPT. 5, 1972

SCALE: 1" = 80'

DRAWN BY: G. SOILAN  
CHECKED BY: m.j.w.  
Deputy Topographical Engineer

3/1/73 John Faybick

John J. ... PRESIDENT, BOROUGH OF MANHATTAN

Felipe Sanchez P.E. TOPOGRAPHICAL ENGINEER