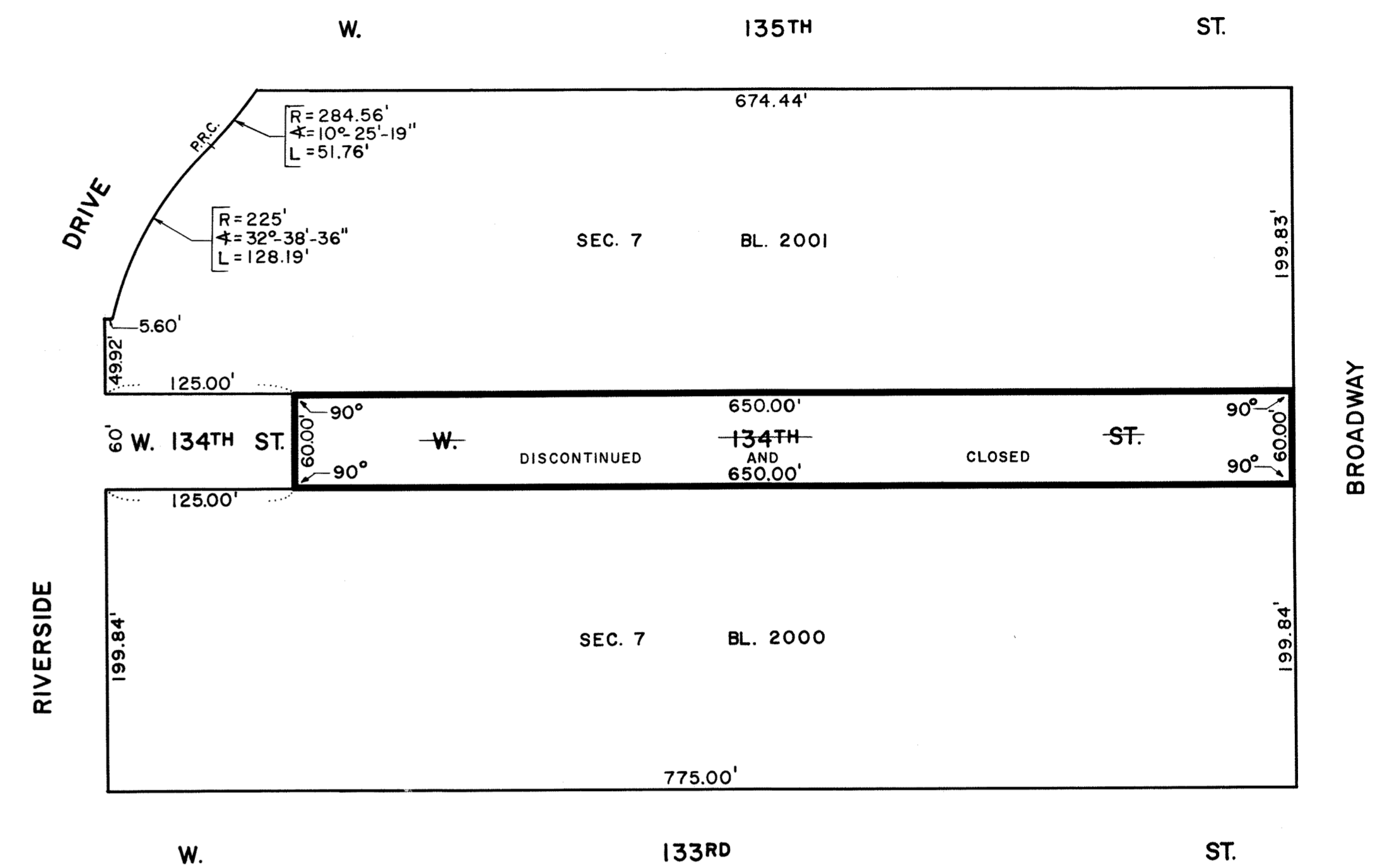


SCALE: 1" = 60'



SCALE: 1" = 80'

NOTE:  
 PORTION OF STREET TO BE DISCONTINUED AND CLOSED  
 ENCLOSED IN HEAVY BLACK LINES.

NOTES

- INDICATES STREET LINE HERETOFORE ESTABLISHED AND HEREBY RETAINED.
- INDICATES STREET LINE HEREBY ESTABLISHED.
- INDICATES STREET LINE HERETOFORE ESTABLISHED AND HEREBY ELIMINATED.
- 775.00' INDICATES DIMENSION HERETOFORE ESTABLISHED AND HEREBY RETAINED.
- 125.00' INDICATES DIMENSION HEREBY ESTABLISHED.
- +199.84' INDICATES DIMENSION HERETOFORE ESTABLISHED AND HEREBY ELIMINATED.
- INDICATES SIDEWALK AND ROADWAY TREATMENT HEREBY ESTABLISHED OR HERETOFORE ESTABLISHED AND RETAINED.
- (10) INDICATES EXISTING SIDEWALK AND ROADWAY DIMENSION.

I, RUTH W. WHALEY, SECRETARY OF THE BOARD OF ESTIMATE OF THE CITY OF NEW YORK DO HEREBY CERTIFY THAT THIS MAP IS ONE OF SEVEN SIMILAR MAPS ADOPTED BY THE SAID BOARD OF ESTIMATE ON THE 20<sup>th</sup> day of July 1972. CAL. 2

DATED: NEW YORK SEP 10 1972  
*Ruth W. Whaley*  
 SECRETARY, BOARD OF ESTIMATE

CITY OF NEW YORK  
 CITY PLANNING COMMISSION

MAP

SHOWING A CHANGE IN THE CITY MAP BY ELIMINATING, DISCONTINUING AND CLOSING WEST 134TH STREET BETWEEN BROADWAY AND A POINT 125 FEET EAST OF RIVERSIDE DRIVE, BOROUGH OF MANHATTAN.

DATED: MAY 15, 1972

SCALE: AS SHOWN

DRAWN BY: G. SOILAN

CHECKED BY: *m. j. w.*  
 DEPUTY TOPOGRAPHICAL ENGINEER

*Felipe Sanchez* P.E.  
 TOPOGRAPHICAL ENGINEER

*John J. Frutkin* P.E.  
 CHIEF, OFFICE OF TECHNICAL CONTROLS

*Donald J. Elliot*  
 CHAIRMAN, CITY PLANNING COMMISSION

*Richard A. Pappano*  
 PRESIDENT, BOROUGH OF MANHATTAN

FILED IN THE OFFICE OF THE DEPT. COMM. MAN.  
 9/26/72  
*J. Faybik*