

0100000000

DRAWN BY: S.W.  
CHECKED BY: L.F.D.  
*John B. Shaw*  
SECTION ENGINEER  
*W. E. Colburn*  
ENGINEER OF DESIGN

SCALE: 1" = 60 FT.

MADE IN THE OFFICE OF THE CHIEF ENGINEER OF DESIGN, BORO. WKS.

4/10/72  
*G. J. Faybik*

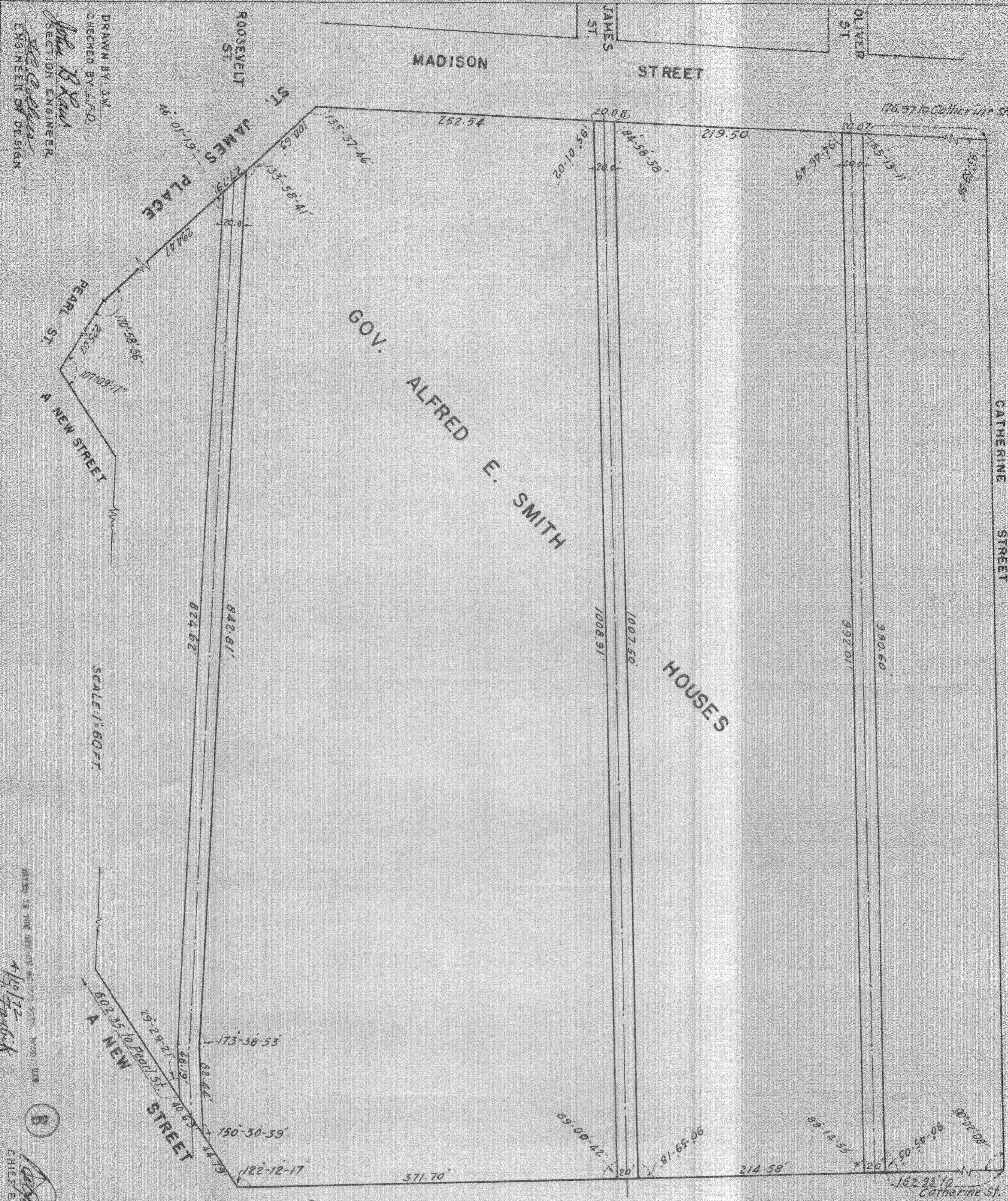
(B)

*Robert L. Lewis*  
CHIEF ENGINEER OF DESIGN

DATED: OCT. 20, 1948  
SCALE: AS SHOWN  
*George E. Rogers*  
PRESIDENT, BORO. OF MANHATTAN

*Michael P. Co.*  
CHIEF ENGINEER

ACC. NO. 30016



SHOWING THE PERMANENT AND PERPETUAL  
EASEMENT FOR SEWER PURPOSES  
RETAINED BY THE CITY OF NEW YORK,  
THROUGH THE GOV. ALFRED E. SMITH  
HOUSES SITE, IN THE BED OF FORMER  
OLIVER ST, JAMES ST, JAMES SLIP,  
AND ROOSEVELT ST.

**EXHIBIT 'A'**  
CITY OF NEW YORK  
OFFICE OF THE PRESIDENT — BOROUGH OF MANHATTAN  
DEPARTMENT OF BOROUGH WORKS  
**MAP OR PLAN**

