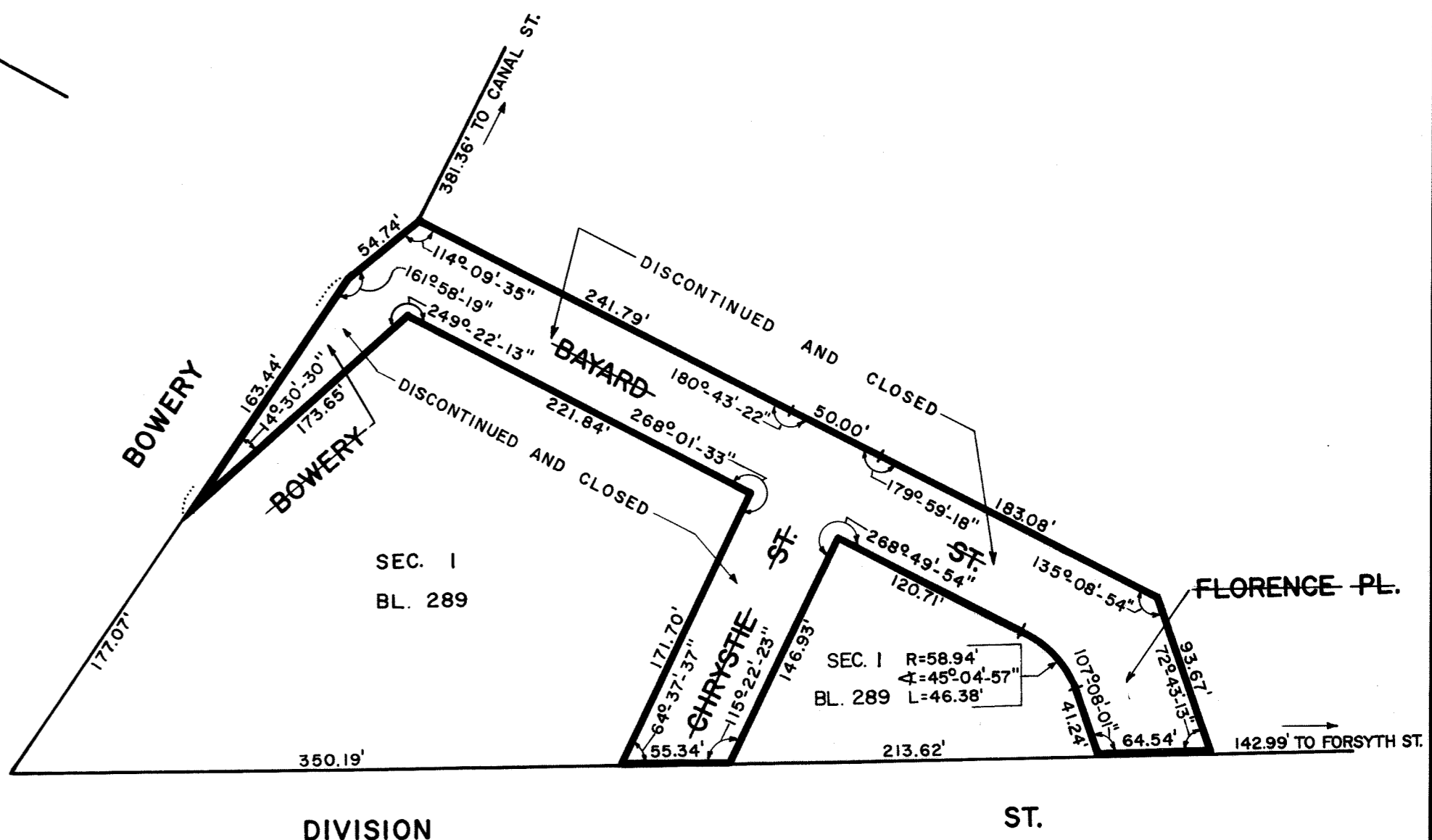
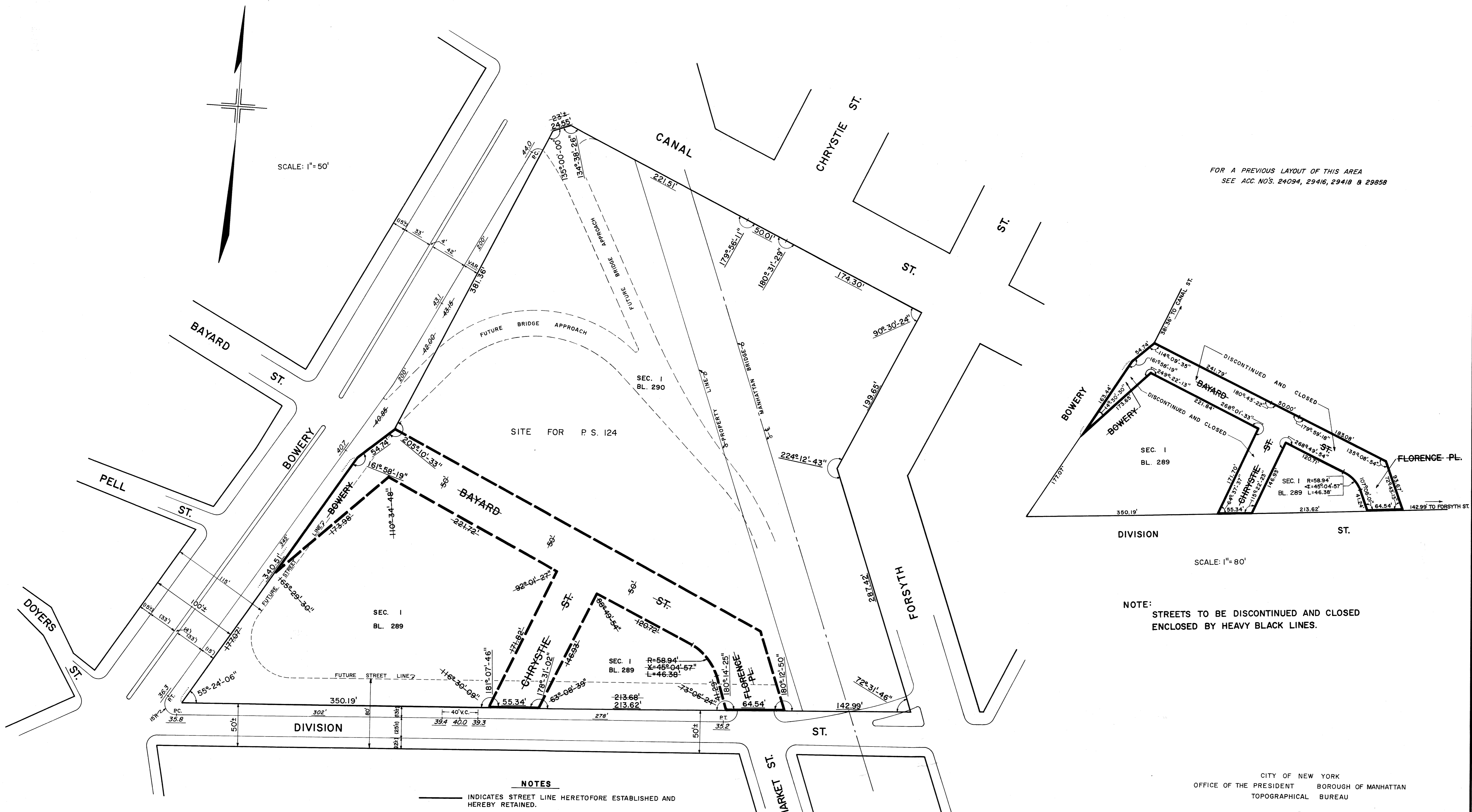


SCALE: 1" = 50'

FOR A PREVIOUS LAYOUT OF THIS AREA  
SEE ACC NOS. 24094, 29416, 29418 & 29858



NOTE:  
STREETS TO BE DISCONTINUED AND CLOSED  
ENCLOSED BY HEAVY BLACK LINES.

**NOTES**

- INDICATES STREET LINE HERETOFORE ESTABLISHED AND HEREBY RETAINED.
  - - - INDICATES STREET LINE HEREBY ESTABLISHED.
  - INDICATES STREET LINE HERETOFORE ESTABLISHED AND HEREBY ELIMINATED.
  - 350.19' INDICATES DIMENSION HERETOFORE ESTABLISHED AND HEREBY RETAINED.
  - 213.62' INDICATES DIMENSION HEREBY ESTABLISHED
  - 213.68' INDICATES DIMENSION HERETOFORE ESTABLISHED AND HEREBY ELIMINATED.
  - 35.8 INDICATES ELEVATION HEREBY ESTABLISHED.
  - 40.05' INDICATES ELEVATION HERETOFORE ESTABLISHED AND HEREBY ELIMINATED.
  - 278' INDICATES TIE-IN DISTANCE TO ELEVATIONS HEREBY ESTABLISHED.
  - INDICATES SIDEWALK AND ROADWAY TREATMENT HEREBY ESTABLISHED OR HERETOFORE ESTABLISHED AND RETAINED.
  - 42' INDICATES SIDEWALK AND ROADWAY TREATMENT DIMENSION HEREBY ESTABLISHED.
  - (15±) INDICATES EXISTING SIDEWALK AND ROADWAY DIMENSION.
- ELEVATIONS ARE FOR TOP OF CURB AND ARE REFERRED TO THE DATUM OF THE TOPOGRAPHICAL BUREAU, BOROUGH OF MANHATTAN WHICH IS 2.75 FEET ABOVE THE U. S. C.&G. SURVEY DATUM AT SANDY HOOK.

Dated: NEW YORK, MAR 7 1973  
I, Paul W. Whaley, SECRETARY OF THE BOARD OF ESTIMATE OF THE CITY OF NEW YORK DO HEREBY CERTIFY THAT THIS MAP IS ONE OF SEVEN SIMILAR MAPS ADOPTED BY THE SAID BOARD OF ESTIMATE ON JAN 25 1973 CAL. 3

DATED: NEW YORK, MAR 7 1973  
Paul W. Whaley  
SECRETARY, BOARD OF ESTIMATE

DRAWN BY: G. SOILAN  
CHECKED BY: m.g.w.  
Michael J. Wiener  
DEPUTY TOPOGRAPHICAL ENGINEER

CITY OF NEW YORK  
OFFICE OF THE PRESIDENT, BOROUGH OF MANHATTAN  
TOPOGRAPHICAL BUREAU

MAP SHOWING A CHANGE IN THE STREET SYSTEM  
BY ELIMINATING, DISCONTINUING AND CLOSING  
**BAYARD STREET, CHRYSTIE STREET, FLORENCE PLACE  
AND A PORTION OF BOWERY**

AND BY ESTABLISHING GRADES AND ROADWAY TREATMENT  
IN THE AREA BOUNDED BY  
BOWERY, CANAL STREET, THE MANHATTAN BRIDGE  
AND DIVISION STREET;

ALL IN CONNECTION WITH THE SITE FOR P.S. 124

DATED: AUG. 7, 1972 SCALE: AS SHOWN

FILED IN THE OFFICE OF THE PRES. GEO. H.M.  
4/4/73  
John Faybit

Joseph S. Sullivan  
PRESIDENT, BOROUGH OF MANHATTAN

Felicia Sanchez P.E.  
TOPOGRAPHICAL ENGINEER