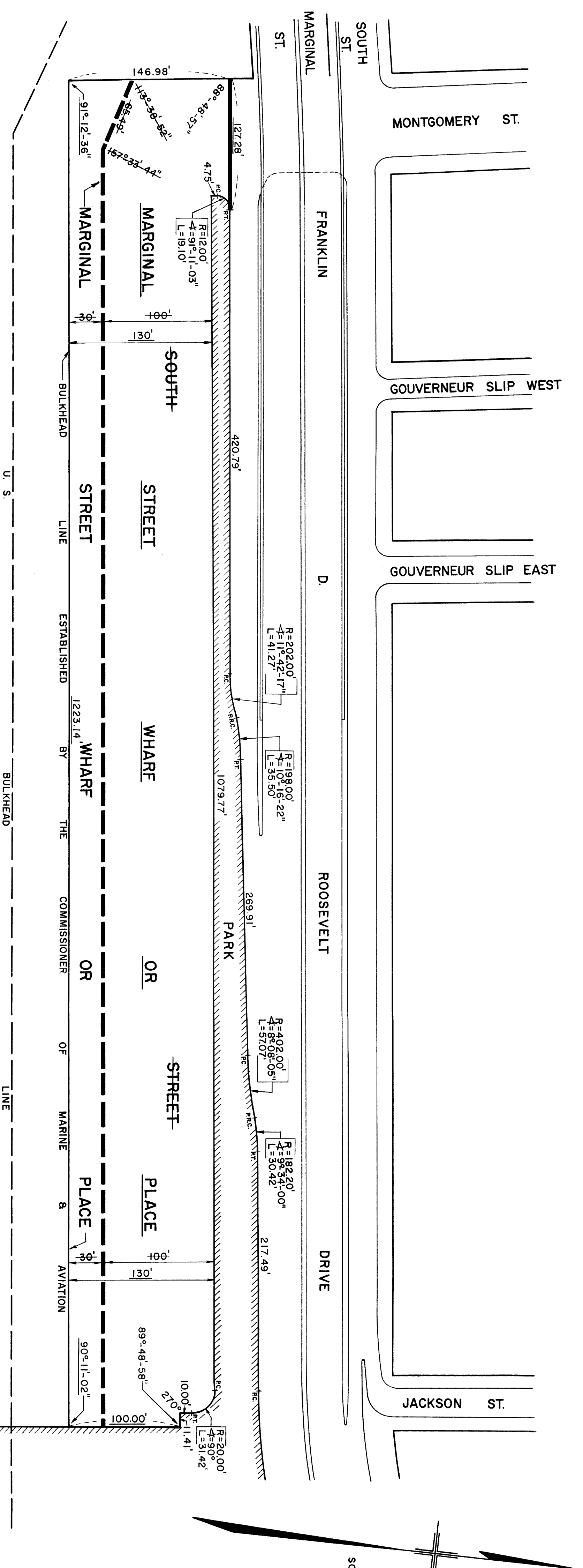


SCALE: 1" = 60'



I, RUTH W. WHALEY, SECRETARY OF THE BOARD OF ESTIMATE OF THE CITY OF NEW YORK DO HEREBY CERTIFY THAT THIS PLAN IS ONE OF FOUR SIMILAR PLANS DETERMINED UPON BY THE COMMISSIONER OF MARINE AND AVIATION AND APPROVED BY THE SAID BOARD OF ESTIMATE ON THE 13TH DAY OF MARCH 1964 SUPERSEDING ALL PLANS HERETOFORE ADOPTED AND APPROVED AFFECTING THE AREA EMBRACED BY SAID PLAN, INsofar AS IT MAKES ANY CHANGES THEREIN.

PLAN DETERMINED UPON BY THE COMMISSIONER OF MARINE AND AVIATION SHOWING A CHANGE IN THE PLAN FOR IMPROVING THE WATERFRONT AND HARBOR OF THE CITY OF NEW YORK HERETOFORE LAID OUT BETWEEN MONTGOMERY STREET AND JACKSON STREET, EAST RIVER, BOROUGH OF MANHATTAN.

DATED: MAY 22, 1968

ATTEST

Charles E. Brown
 COMMISSIONER OF MARINE AND AVIATION

DATED: JUN 23 1968

Ruth W. Whaley
 SECRETARY, BOARD OF ESTIMATE

John C. Fleming
 SECY, DEPT. OF MARINE AND AVIATION

(B)

John C. Fleming
 CHIEF ENGINEER

No. 4350

FILED IN THE OFFICE OF THE CITY ENGINEER 7/19/71 jmf/ik

30006