

NOTES

INDICATES STREET LINE HERETOFORE ESTABLISHED AND HEREBY RETAINED.

95.74 INDICATES DIMENSION HERETOFORE ESTABLISHED AND HEREBY RETAINED.

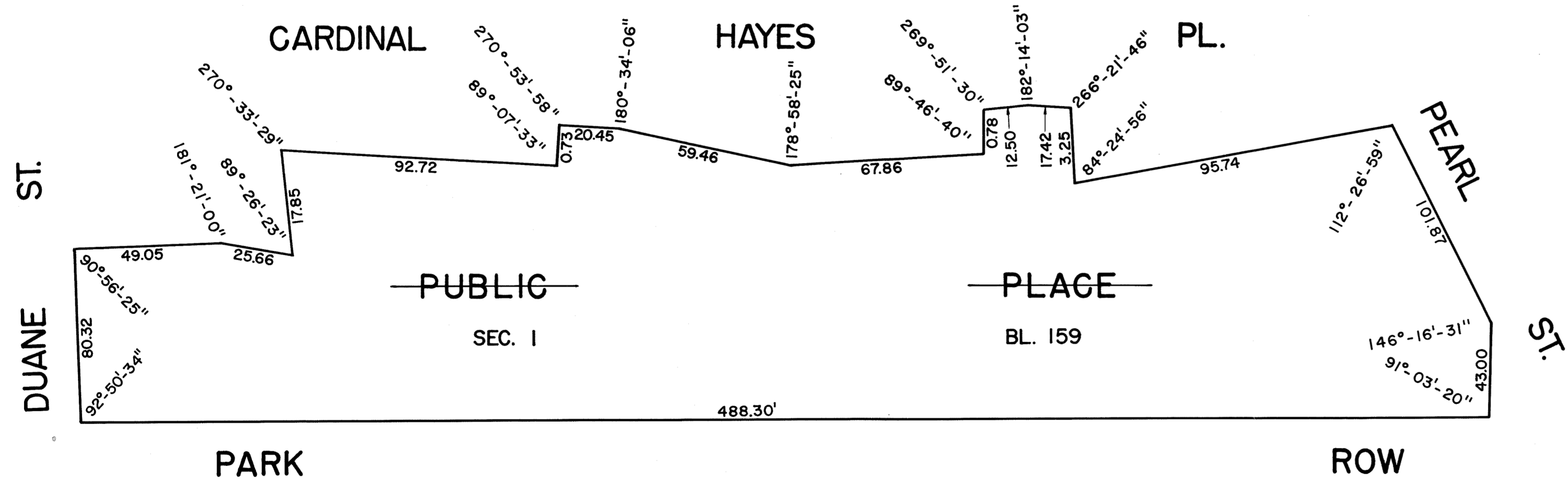
~~PUBLIC PLACE~~ INDICATES PUBLIC PLACE HEREBY ELIMINATED.

SCALE: 1" = 80'

I, RUTH W. WHALEY, SECRETARY OF THE BOARD OF ESTIMATE OF THE CITY OF NEW YORK DO HEREBY CERTIFY THAT THIS MAP IS ONE OF SEVEN SIMILAR MAPS ADOPTED BY THE SAID BOARD OF ESTIMATE ON AUG. 19, 1971 CAL. 155

DATED: NEW YORK OCT 7 1971

Ruth W. Whaley
SECRETARY, BOARD OF ESTIMATE



CITY OF NEW YORK
CITY PLANNING COMMISSION
MAP

SHOWING A CHANGE IN THE CITY MAP
BY ELIMINATING
A PUBLIC PLACE
IN THE AREA BOUNDED BY
DUANE STREET, CARDINAL HAYES PLACE,
PEARL STREET AND PARK ROW

DATED: JULY 13, 1971 SCALE: AS SHOWN

DRAWN BY: G. SOILAN

CHECKED BY: *m. Wiemer*

Max Kizerowitz
CHIEF, OFFICE OF TECHNICAL CONTROLS

EXAMINED IN THE OFFICE OF THE PRES. BORO. MAN.
11/1/71

Donald H. Elliott
CHAIRMAN, CITY PLANNING COMMISSION