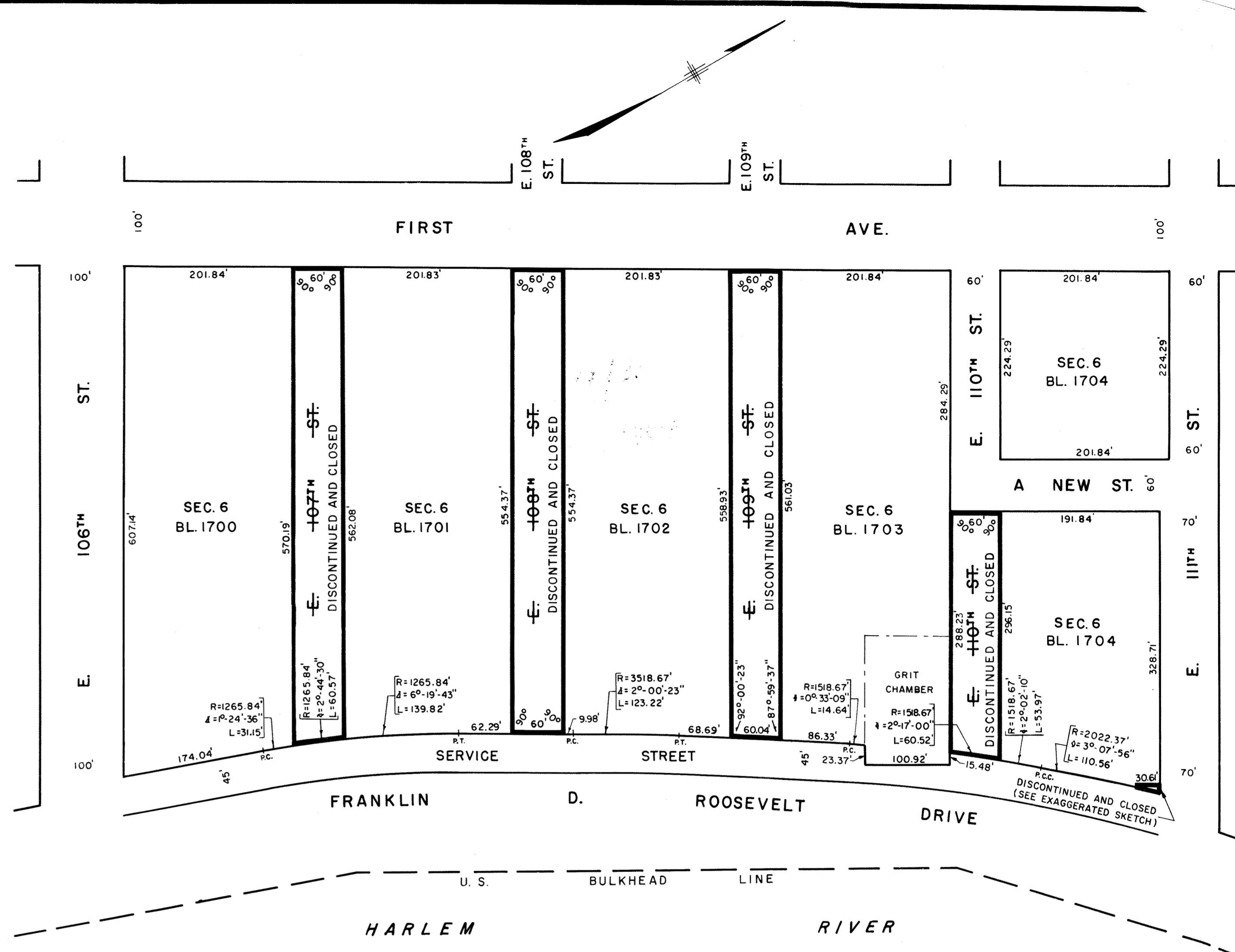
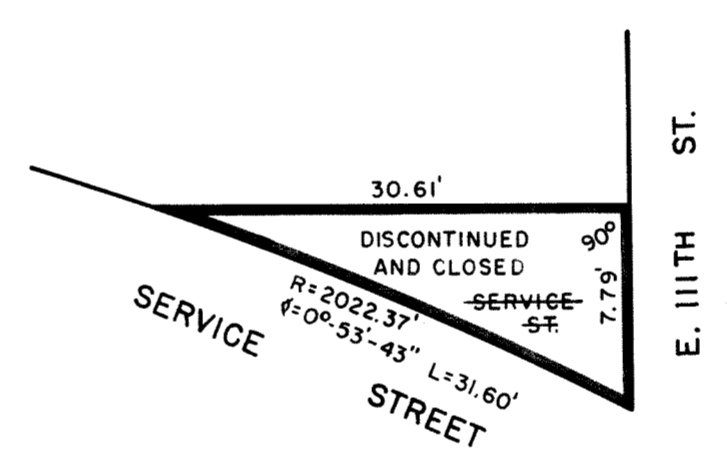


SCALE: 1" = 80'



SCALE: 1" = 100'



EXAGGERATED SKETCH (NOT TO SCALE)

This map amended or superseded by Map No. _____

REFERENCES: - ACC. 28064, 27252, R.E. 136

David C. O'Connell, Secretary of the Board of Estimate of the City of New York
 DO HEREBY CERTIFY THAT THIS MAP IS ONE OF SEVEN SIMILAR MAPS ADOPTED BY THE SAID BOARD OF ESTIMATE ON THE 23RD JULY 1970 CAL. 3
 DATED: NEW YORK SEP 2 1970
 David C. O'Connell, Secretary, Board of Estimate

NOTES

- INDICATES STREET LINE HERETOFORE ESTABLISHED AND HEREBY RETAINED.
- INDICATES STREET LINE HEREBY ESTABLISHED.
- INDICATES STREET LINE HERETOFORE ESTABLISHED AND HEREBY ELIMINATED.
- 201.84' INDICATES DIMENSION HERETOFORE ESTABLISHED AND HEREBY RETAINED.
- 251.84' INDICATES DIMENSION HEREBY ESTABLISHED.
- 6'- INDICATES DIMENSION HERETOFORE ESTABLISHED AND HEREBY ELIMINATED.
- 5.6 INDICATES ELEVATION HEREBY ESTABLISHED.
- 7.2 INDICATES ELEVATION HERETOFORE ESTABLISHED AND HEREBY ELIMINATED.
- 200' INDICATES TIE-IN DISTANCES TO ELEVATIONS HEREBY ESTABLISHED.
- INDICATES SIDEWALK AND ROADWAY TREATMENT HEREBY ESTABLISHED OR HERETOFORE ESTABLISHED AND RETAINED.
- 15' INDICATES SIDEWALK AND ROADWAY TREATMENT DIMENSION HERETOFORE ESTABLISHED AND RETAINED.
- 15' INDICATES SIDEWALK AND ROADWAY TREATMENT DIMENSION HEREBY ESTABLISHED.
- INDICATES PROPERTY SUB-DIVISION LINE.
- DISCONTINUED AND CLOSED INDICATES STREET AREA TO BE DISCONTINUED AND CLOSED
- INDICATES EASEMENT HEREBY ESTABLISHED.

ELEVATIONS ARE FOR TOP OF CURB AND ARE REFERRED TO THE DATUM OF THE TOPOGRAPHICAL BUREAU, BOROUGH OF MANHATTAN WHICH IS 2.75 FEET ABOVE THE U.S.C. & G. DATUM AT SANDY HOOK

CITY OF NEW YORK
 OFFICE OF THE PRESIDENT, BOROUGH OF MANHATTAN
 TOPOGRAPHICAL BUREAU

MAP SHOWING A CHANGE IN THE STREET SYSTEM BY ESTABLISHING, WIDENING, ELIMINATING, DISCONTINUING AND CLOSING STREETS; BY ESTABLISHING GRADES AND ROADWAY TREATMENT AND BY ESTABLISHING THE LINES AND DIMENSIONS OF A PERMANENT AND PERPETUAL EASEMENT FOR PEDESTRIAN AND EMERGENCY VEHICULAR ACCESS IN THE AREA GENERALLY BOUNDED BY EAST 106TH STREET, FIRST AVENUE, EAST 111TH STREET AND FRANKLIN D. ROOSEVELT DRIVE IN CONNECTION WITH THE EAST RIVER URBAN RENEWAL PROJECT.

DATED: MARCH 5, 1970

SCALE: AS SHOWN

DRAWN BY: H.C.J.
 CHECKED BY: M.G.W.
 M. G. W. DEPUTY TOPOGRAPHICAL ENGINEER

Joseph Miller
 PRESIDENT, BOROUGH OF MANHATTAN
Felipe Sanchez P.E.
 TOPOGRAPHICAL ENGINEER