

HUDSON

RIVER

U. S. BULKHEAD LINE

MARGINAL ST.

ST.

MARGINAL ST.

ST.

MILLER HIGHWAY

HIGHWAY

MILLER HIGHWAY

HIGHWAY

WEST ST.

ST.

WORLD TRADE CENTER

WASHINGTON ST.

SEC. I BL. 84

WEST

BROADWAY

BARCLAY ST.

PARK PL.

GREENWICH ST.

MURRAY ST.

WARREN ST.

CHAMBERS ST.

READE ST.

DUANE ST.

JAY ST.

HARRISON ST.

FRANKLIN ST.

BEACH ST.

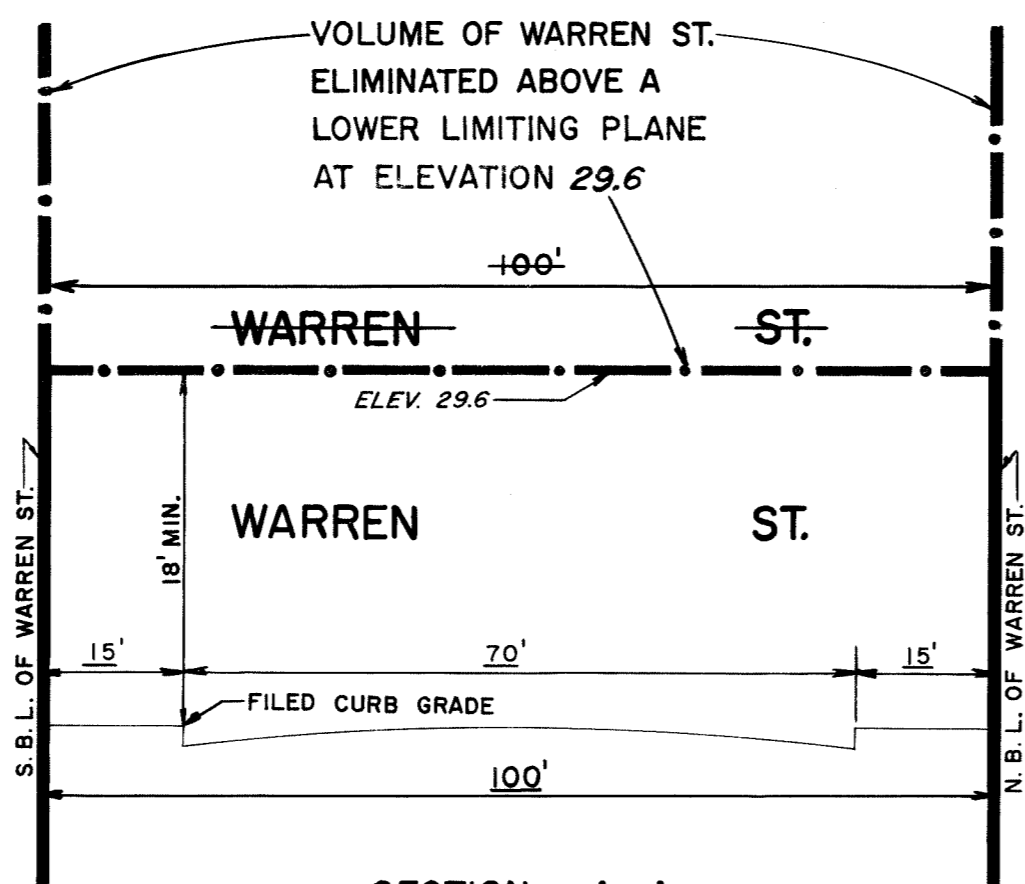
HUBERT ST.

COLLISTER ST.

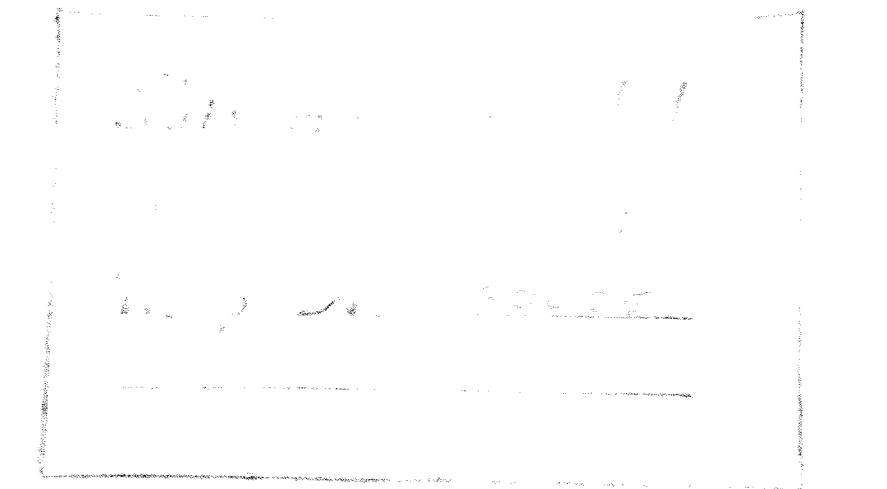
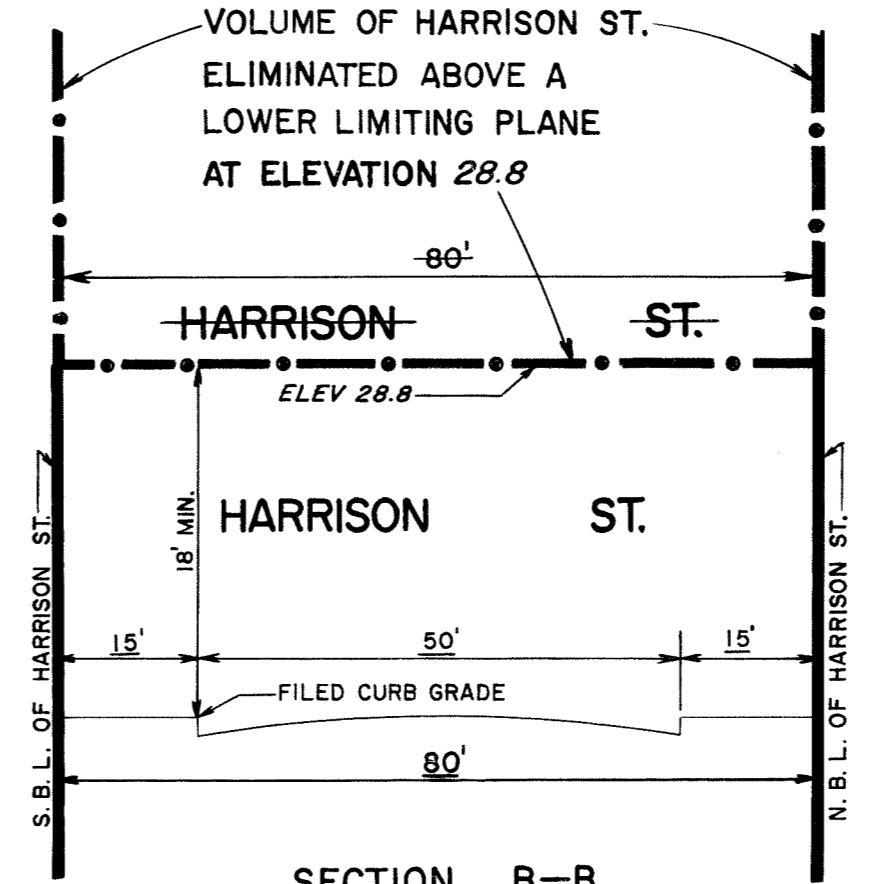
I, RUTH W. WHALEY, SECRETARY OF THE BOARD OF ESTIMATE OF THE CITY OF NEW YORK DO HEREBY CERTIFY THAT THIS MAP IS ONE OF SEVEN SIMILAR MAPS ADOPTED BY THE SAID BOARD OF ESTIMATE ON THE 8th OCT. 1970 CAL. 15

DATED NEW YORK

Ruth W. Whaley
 SECRETARY, BOARD OF ESTIMATE



- NOTES**
- INDICATES STREET LINE HERETOFORE ESTABLISHED AND HEREBY RETAINED.
 - INDICATES STREET LINE HEREBY ESTABLISHED.
 - INDICATES STREET LINE HERETOFORE ESTABLISHED AND HEREBY ELIMINATED.
 - 899.78' INDICATES ELEVATION HEREBY ESTABLISHED.
 - 110' INDICATES TIE-IN DISTANCES TO ELEVATIONS HEREBY ESTABLISHED.
 - 188' INDICATES SIDEWALK AND ROADWAY TREATMENT HEREBY ESTABLISHED OR HERETOFORE ESTABLISHED AND RETAINED.
 - 65± INDICATES DIMENSION HERETOFORE ESTABLISHED AND HEREBY RETAINED.
 - 15' INDICATES SIDEWALK AND ROADWAY TREATMENT DIMENSION HEREBY ESTABLISHED.
 - ELEVATIONS ARE FOR TOP OF CURB AND ARE REFERRED TO THE DATUM OF THE TOPOGRAPHICAL BUREAU, BOROUGH OF MANHATTAN WHICH IS 2.75 FEET ABOVE THE U.S.C. & G. DATUM AT SANDY HOOK
 - INDICATES VOLUMES OF STREETS ELIMINATED ABOVE A LOWER LIMITING PLANE.



CITY OF NEW YORK
 OFFICE OF THE PRESIDENT, BOROUGH OF MANHATTAN
 TOPOGRAPHICAL BUREAU

MAP SHOWING A CHANGE IN THE STREET SYSTEM BY ESTABLISHING, WIDENING, ELIMINATING, DISCONTINUING AND CLOSING STREETS; BY ESTABLISHING GRADES AND ROADWAY TREATMENT AND BY ELIMINATING, DISCONTINUING AND CLOSING A VOLUME OF WARREN STREET AND OF HARRISON STREET ABOVE DESIGNATED LOWER LIMITING PLANES IN THE AREA GENERALLY BOUNDED BY BARCLAY STREET, WEST STREET, HUBERT STREET AND GREENWICH STREET IN CONNECTION WITH THE WASHINGTON MARKET URBAN RENEWAL AREA.

DATED: MARCH 4, 1970
 MOD: JULY 1, 1970

James M. Sullivan
 PRESIDENT, BOROUGH OF MANHATTAN

Julius S. Sankel P.E.
 TOPOGRAPHICAL ENGINEER

SCALE: 1" = 80'

DRAWN BY: H.C.J. & G.S.
 CHECKED BY: *J.C.*

Melody Wienges
 DEPUTY TOPOGRAPHICAL ENGINEER

11/30/1970
 7.7 alyk

ACC. NO. 29985

HUDSON

RIVER

U. S. BULKHEAD LINE

MARGINAL

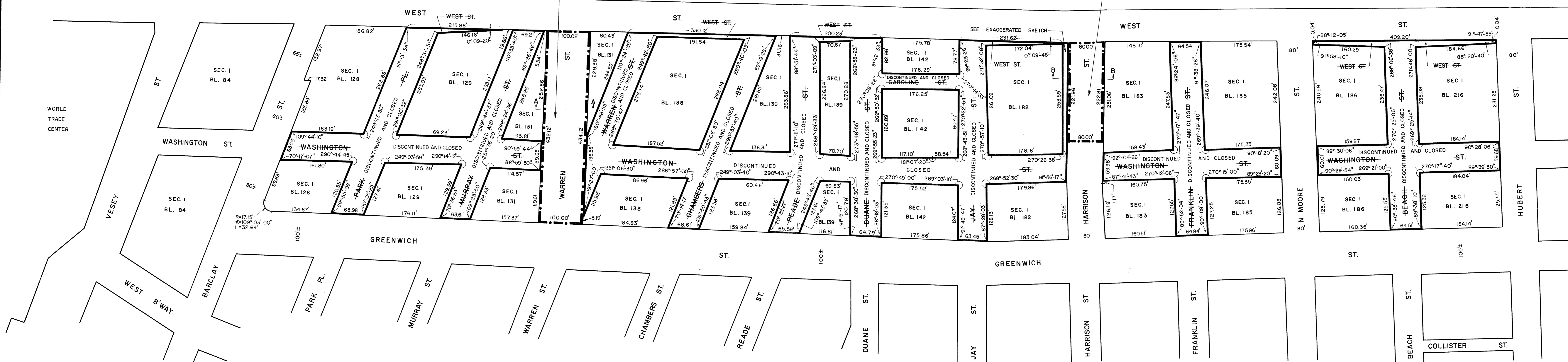
ST.

MARGINAL

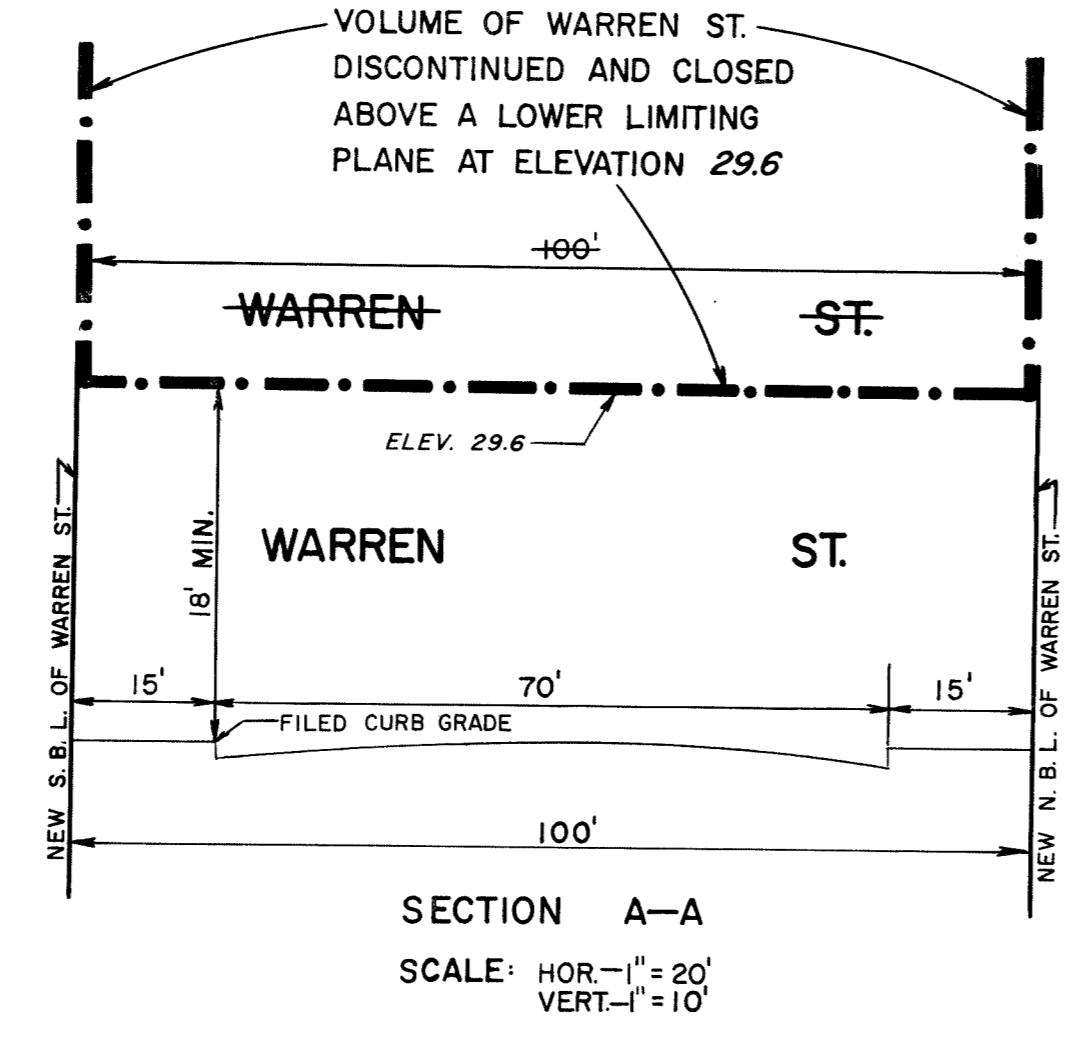
ST.

VOLUME OF WARREN ST. DISCONTINUED AND CLOSED ABOVE A LOWER LIMITING PLANE AT ELEVATION 29.6

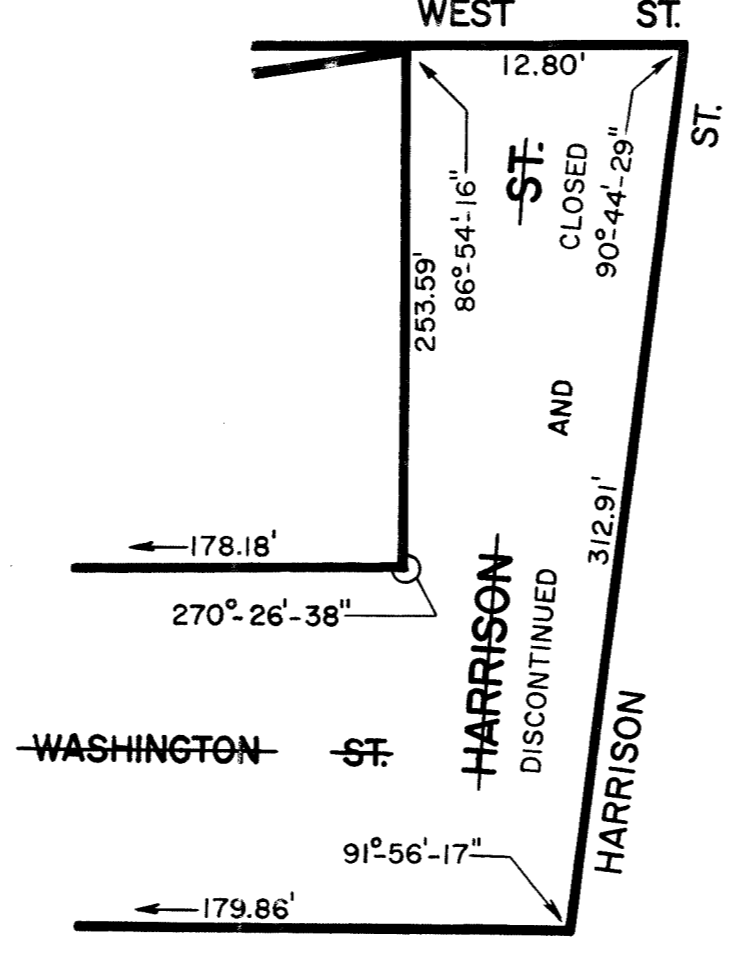
VOLUME OF HARRISON ST. DISCONTINUED AND CLOSED ABOVE A LOWER LIMITING PLANE AT ELEVATION 28.8



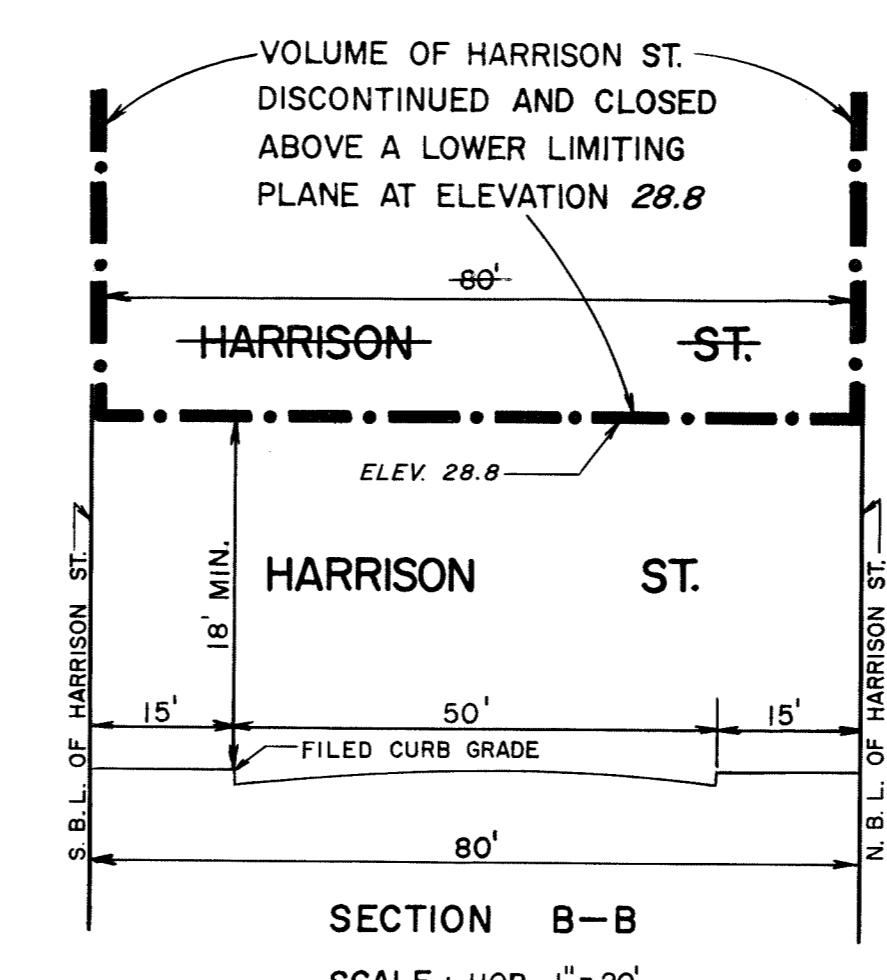
I, RUTH W. WHALEY, SECRETARY OF THE BOARD OF ESTIMATE OF THE CITY OF NEW YORK DO HEREBY CERTIFY THAT THIS MAP IS ONE OF SEVEN SIMILAR MAPS ADOPTED BY THE SAID BOARD OF ESTIMATE ON THE 25th DAY OF JULY 1970.
DATED: NEW YORK
DAVID C. O'CONNOR
SECRETARY, BOARD OF ESTIMATE



SECTION A-A
SCALE: HOR. 1" = 20'
VERT. 1" = 10'



EXAGGERATED SKETCH
(NOT TO SCALE)



SECTION B-B
SCALE: HOR. 1" = 20'
VERT. 1" = 10'

- NOTES:
- STREETS TO BE DISCONTINUED AND CLOSED ENCLOSED IN HEAVY BLACK LINES.
 - STREET VOLUMES TO BE DISCONTINUED AND CLOSED ENCLOSED IN HEAVY BLACK DOT AND DASH LINES.

CITY OF NEW YORK
OFFICE OF THE PRESIDENT
TOPOGRAPHICAL BUREAU

MAP SHOWING A CHANGE IN THE STREET SYSTEM BY ESTABLISHING, WIDENING, ELIMINATING, DISCONTINUING AND CLOSING STREETS; BY ESTABLISHING GRADES AND ROADWAY TREATMENT AND BY ELIMINATING, DISCONTINUING AND CLOSING A VOLUME OF WARREN STREET AND OF HARRISON STREET ABOVE DESIGNATED LOWER LIMITING PLANES IN THE AREA GENERALLY BOUNDED BY BARCLAY STREET, WEST STREET, HUBERT STREET AND GREENWICH STREET IN CONNECTION WITH THE WASHINGTON MARKET URBAN RENEWAL AREA.

DATED: MARCH 4, 1970

SCALE: 1" = 80'

David C. O'Connor
PRESIDENT, BUREAU OF MANHATTAN
John J. ...
TOPOGRAPHICAL ENGINEER

DRAWN BY H.C.J. & G.S.
CHECKED BY *mgw*
Madeline D. Williams
DEPUTY TOPOGRAPHICAL ENGINEER

11/30/1970
J. Taylor

ACC. NO. 29985