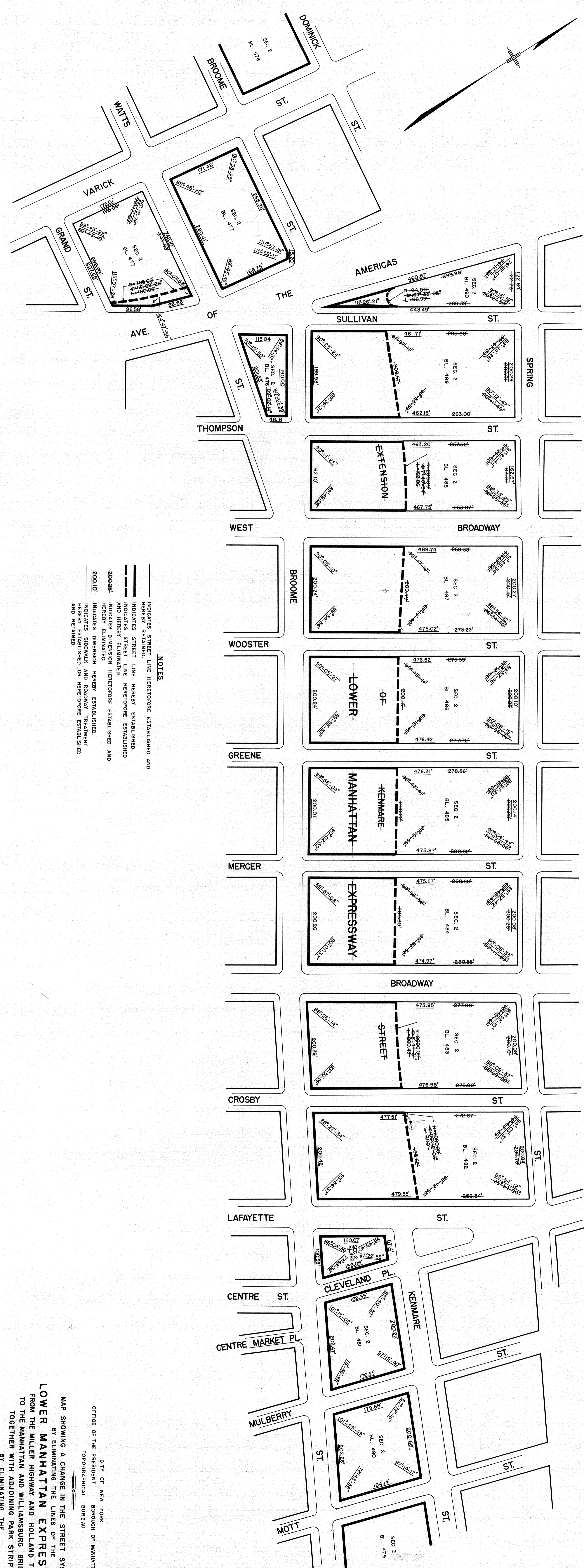


DRAWN BY: G.S.
 CHECKED BY: M.J.W.
 DEPUTY CHIEF ENGINEER



NOTES

- INDICATES STREET LINE HERETOFORE ESTABLISHED AND HEREBY RETAINED.
- INDICATES STREET LINE HEREBY ESTABLISHED.
- INDICATES STREET LINE HERETOFORE ESTABLISHED AND HEREBY ELIMINATED.
- INDICATES DIMENSION HERETOFORE ESTABLISHED AND HEREBY ELIMINATED.
- INDICATES DIMENSION HEREBY ESTABLISHED.
- INDICATES SIDEWALK AND ROADWAY TREATMENT HEREBY ESTABLISHED OR HERETOFORE ESTABLISHED AND RETAINED.

MAP SHOWING A CHANGE IN THE STREET SYSTEM BY ELIMINATING THE LINES OF THE LOWER MANHATTAN EXPRESSWAY FROM THE MILLER HIGHWAY AND HOLLAND TUNNEL TO THE MANHATTAN AND WILLAMSBURG BRIDGES, TOGETHER WITH ADJOINING PARK STRIPS;
 BY ELIMINATING THE EXTENSION OF KENMARE STREET FROM LAFAYETTE STREET TO AVENUE OF THE AMERICAS;
 BY ESTABLISHING OR RE-ESTABLISHING THE LINES AND DIMENSIONS OF THE ADJOINING STREET SYSTEM; AND BY RE-ESTABLISHING A PORTION OF A PARK HERETOFORE ELIMINATED WITHIN THE BLOCK BOUNDED BY DELANCEY STREET, FORSYTH STREET, GRAND STREET AND CHRISTIE STREET.

DATED: MAY 12, 1989

CITY OF NEW YORK
 OFFICE OF THE PRESIDENT
 TOPOGRAPHICAL BUREAU

1. DAVID W. WHEATY, SECRETARY OF THE BOARD OF ESTIMATE OF THE CITY OF NEW YORK DO HEREBY CERTIFY THAT THIS MAP IS ONE OF HIS OFFICIAL DUTIES AND IS NOT A PRIVATE BUSINESS ESTIMATE ON THE PART OF SAID BOARD.
 DATED: NEW YORK, OCT 24 1988
 David W. Wheaty
 SECRETARY, BOARD OF ESTIMATE

10/24/89
 7/10/89

ACC 29972